

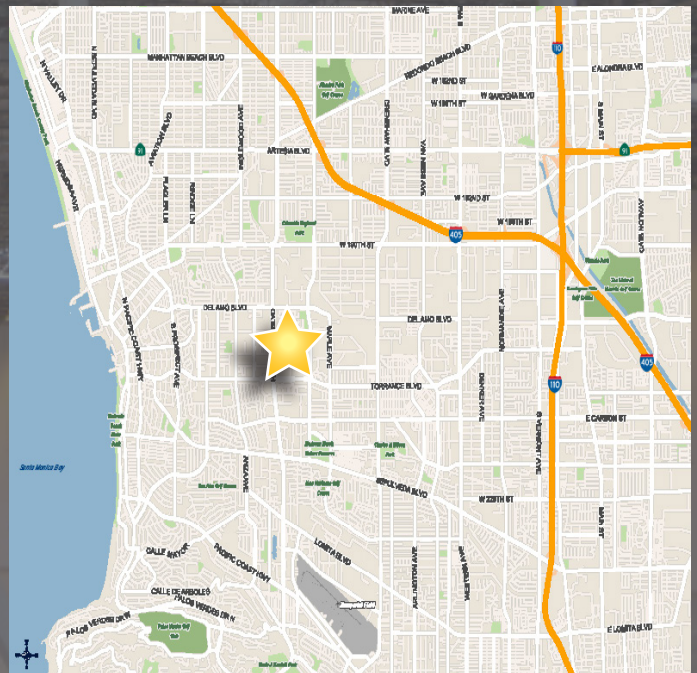


## 2610 Columbia Street Unit B Torrance, CA 90503

- Central Torrance Location
- Like New Building Exterior
- High efficiency T-5 Lighting in Warehouse
- 3 DH / 1 GL Truck Doors
- Power - 200 Amps
- Professionally Owned & Managed by First Industrial Realty Trust

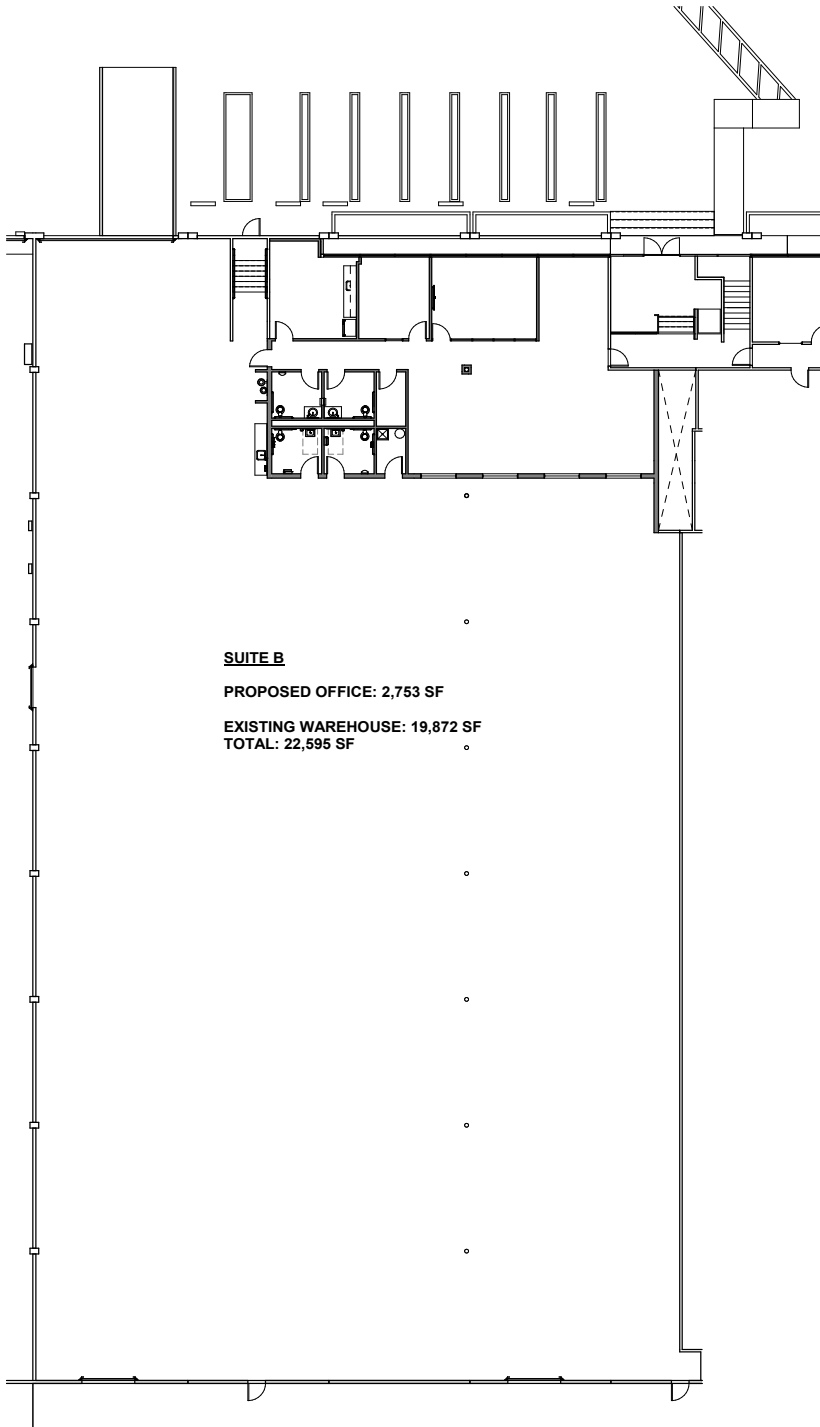
### Highlights

<b>Available Space:</b>	22,595 SF
<b>Building SF:</b>	100,778 SF
<b>Office Space:</b>	± 2,753 SF
<b>Clear Height:</b>	20'
<b>Loading Doors:</b>	3 DH / 1 GL
<b>Parking Ratio:</b>	TBD
<b>Power:</b>	200 Amps 277-480 Volts



# 2610 Columbia Street Unit B Torrance, CA 90503

## Site Plan



## Broker Contact:

### JEFF SMART

Senior Executive Vice President  
License No. 00918873  
+1 310 321 1812  
jeffrey.smart@colliers.com

### ELIZABETH CAPATI

Senior Associate  
License No. 02109628  
+1 310 321 1855  
elizabeth.capati@colliers.com

2141 Rosecrans Avenue  
Suite 1120  
El Segundo, CA 90245  
www.colliers.com



## Owner Contact:

### JERRY DEVON

Marketing & Leasing Director  
898 N. Pacific Coast Highway | Suite 175  
El Segundo, CA 90245  
Direct: +1 (424) 220-9212  
jdevon@firstindustrial.com



www.firstindustrial.com

All information furnished regarding the property for sale, rental or financing is obtained from sources deemed reliable. No representation is made to the accuracy thereof and is submitted subject to errors, omissions, change of price rental or other conditions, prior sale, lease, or financing, or withdrawal without notice. First Industrial Realty Trust, Inc. represents the Seller in this transaction and as such owes all duties and obligations