



AMERICAN TOBACCO CENTER
 121 N. 20TH STREET
 RICHMOND, VA 23223

NOW LEASING!



CREATIVE OFFICE AND RETAIL SPACE IN RENOVATED TOBACCO WAREHOUSE

PROPERTY FEATURES

- ▶ Bustling neighborhood of Shockoe Bottom
- ▶ Rustic charm with exposed brick and beams alongside modern design elements and finishes
- ▶ Excellent access to major interstates I-95, I-64 and Downtown Expressway I-195
- ▶ Parking garage access within one block
- ▶ Professionally-managed by local property management firm with on-site management office
- ▶ Access to building amenities, including roof top pool deck with panoramic views of city skyline, 24-hour fitness center and large lounge area
- ▶ Within walking distance of VCU/MCV, Shockoe Slip, Church Hill, many restaurants and close to Central Business District

PROPERTY SUMMARY

Space Available	Creative Office	2,500 – 6,000 SF
Total Property Size	160,000 SF, Mixed-Use	

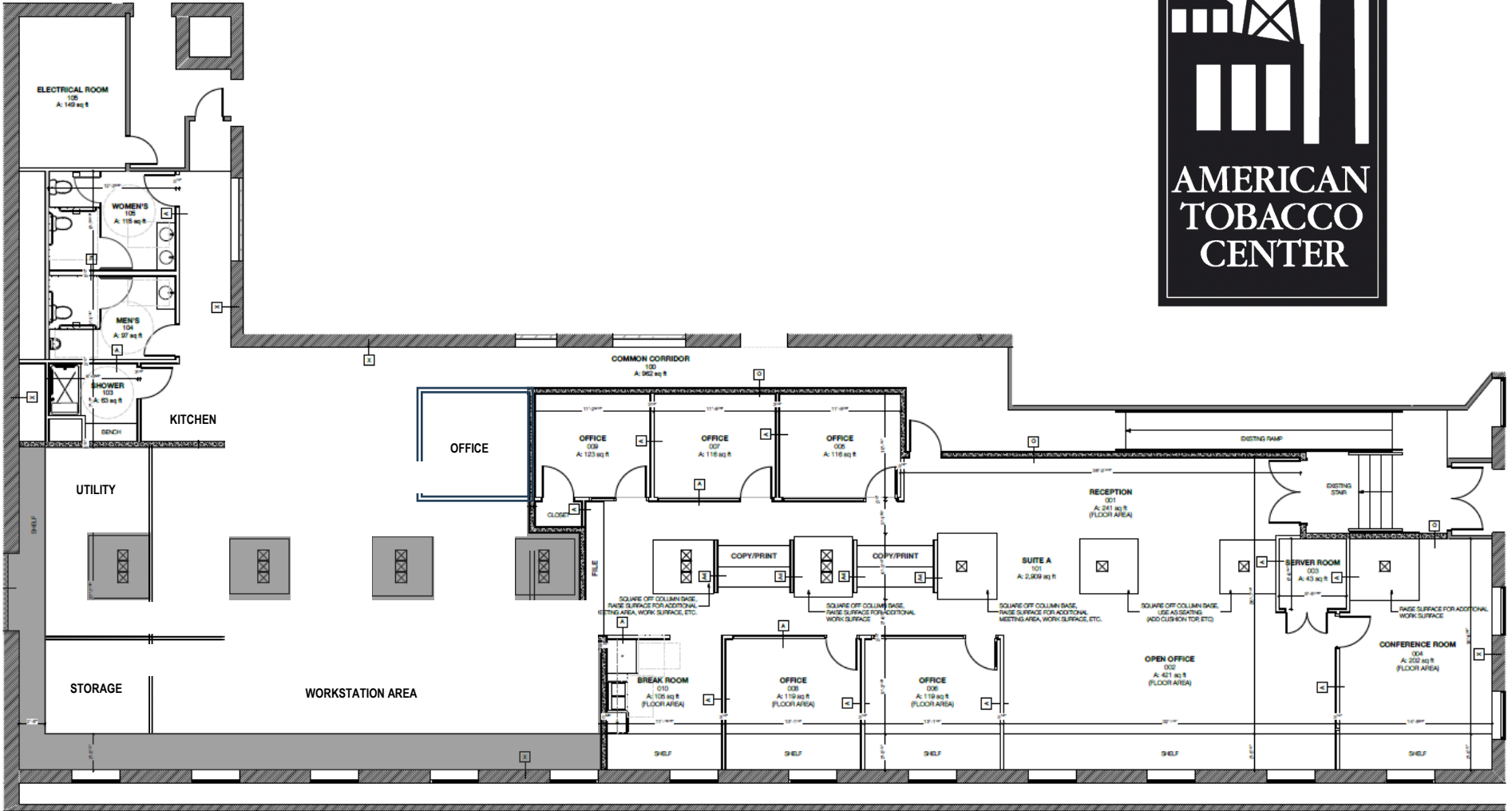


PROPERTY CONTACT

Sean Eichert, (804) 419-2295
 seichert@plasmgt.com, www.plasmgt.com

Plus Management, LLC
 13281 River's Bend Blvd, Suite 201, Chester, VA 23836

FLOOR PLAN



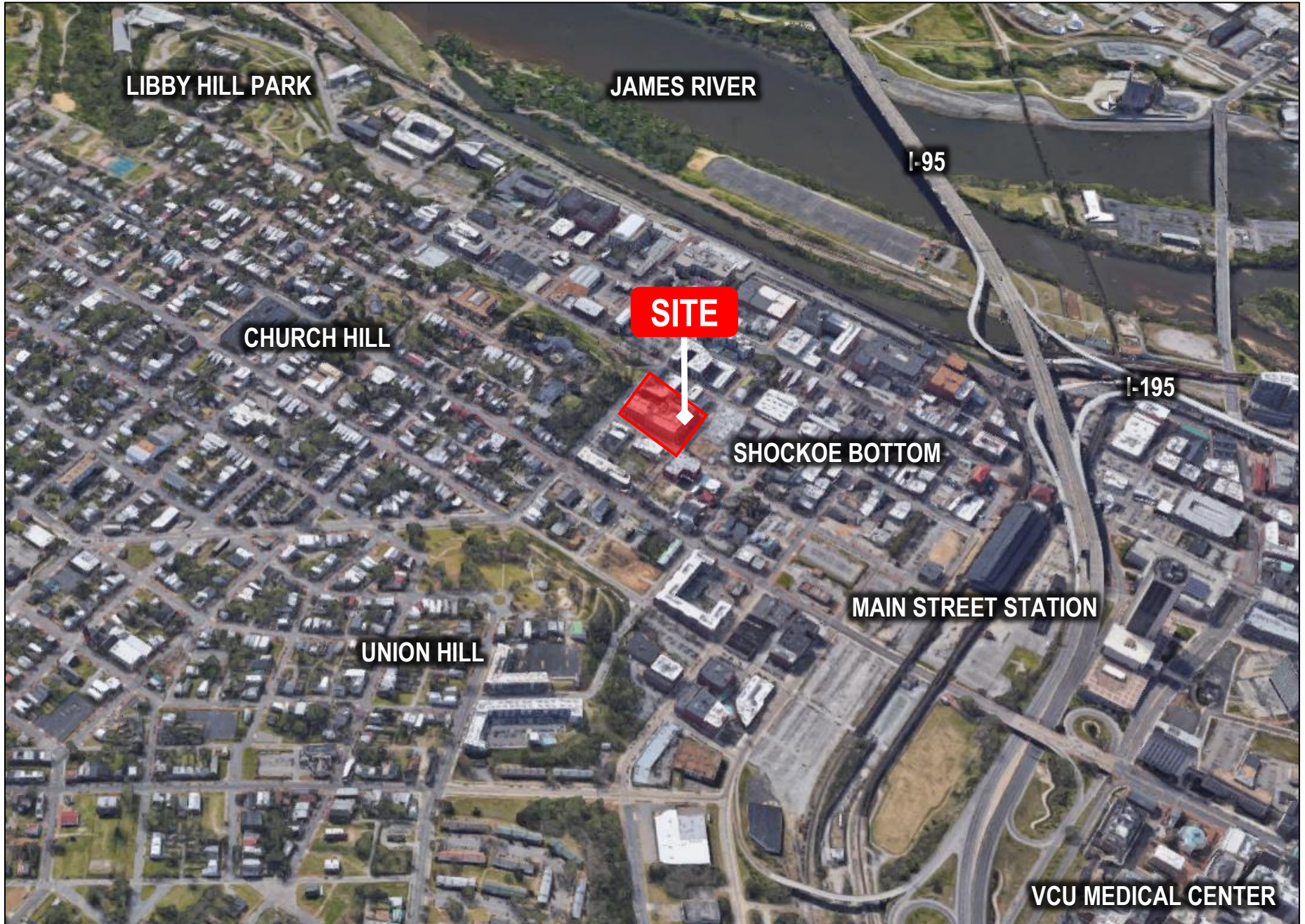
Floor plan is approximate.

Suite B
2,500 SF

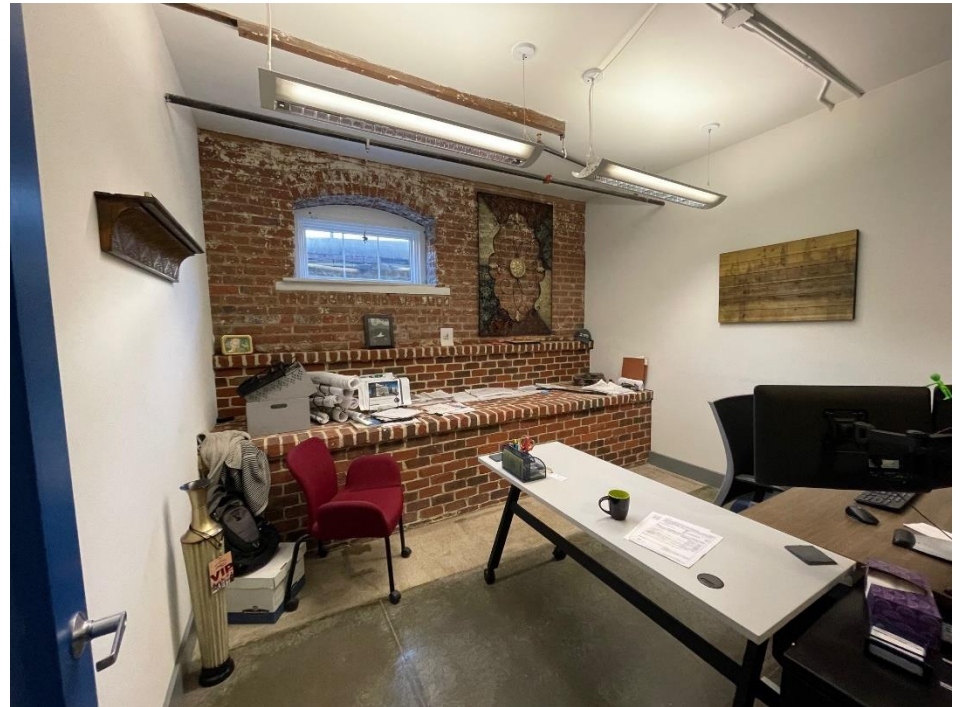
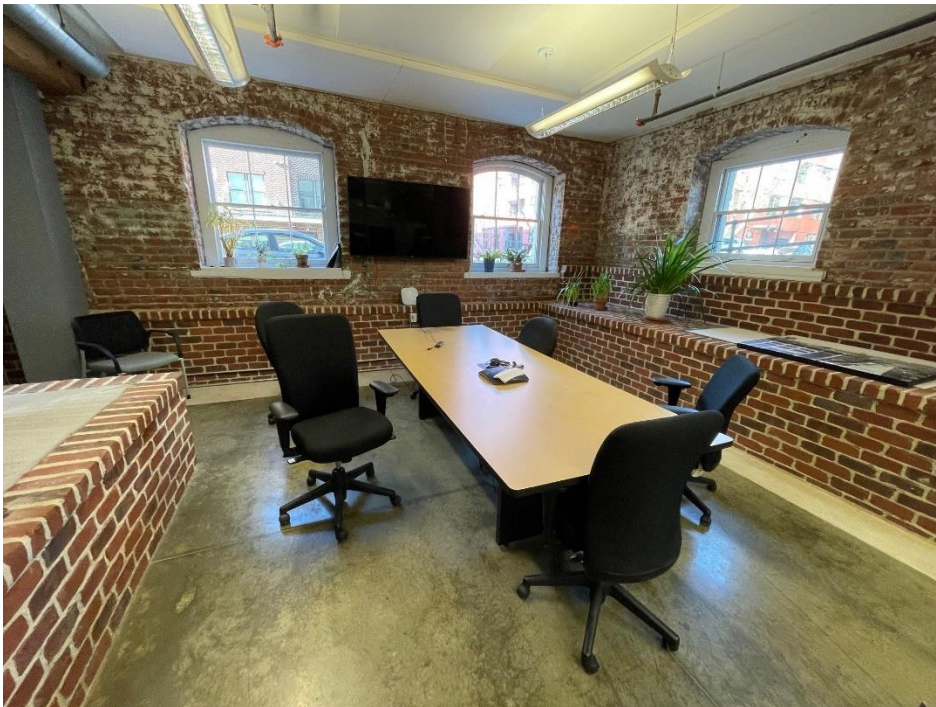
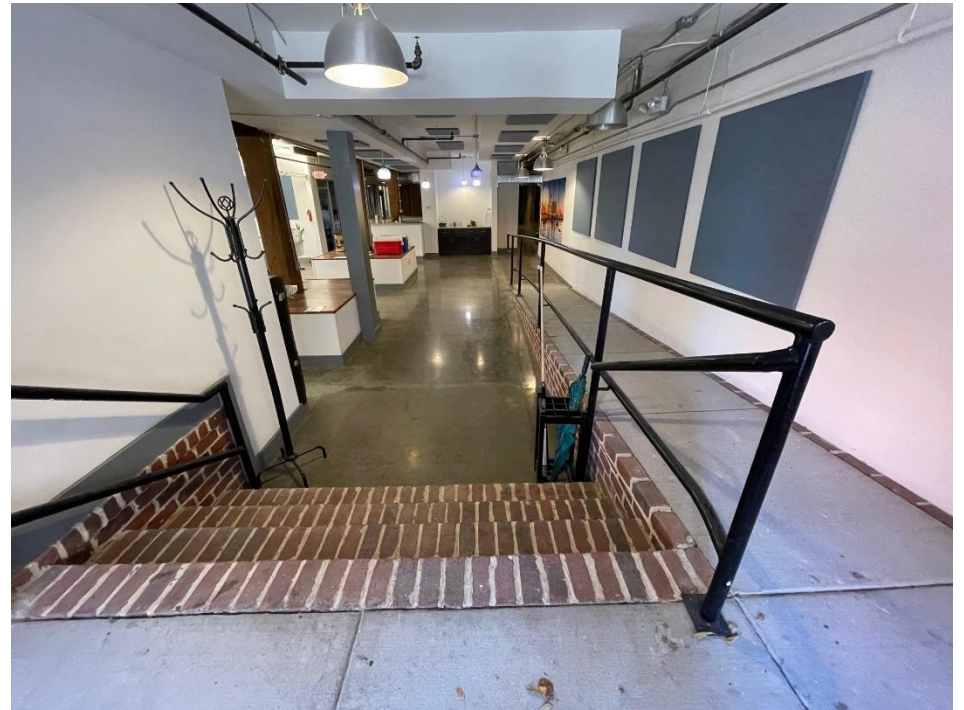
Suite A
3,500 SF

Suites A & B
6,000 SF

AERIAL PLAN



PHOTOS



PHOTOS

