

42171-42247 ANN ARBOR RD
PLYMOUTH, MICHIGAN

OFFICE FOR LEASE
370 – 4,626 Square Feet Available



**SIGNATURE
ASSOCIATES**
KNOW SIGNATURE | KNOW RESULTS

PMC CENTER EAST & WEST



PROPERTY FEATURES

- 370 – 4,626 square feet available
- High visibility location on Ann Arbor Rd.
- Easy Access to major freeways and Downtown Plymouth
- Retail and office suites available
- Well maintained building with on-site management
- Abundant Parking
- Lease Rate: \$16.00-\$22.00/sq. ft. Gross



For more information, please contact:

JASON STOUGH
(248) 948 4180
jstough@signatureassociates.com

SIGNATURE ASSOCIATES
One Towne Square, Suite 1200
Southfield, MI 48076
www.signatureassociates.com

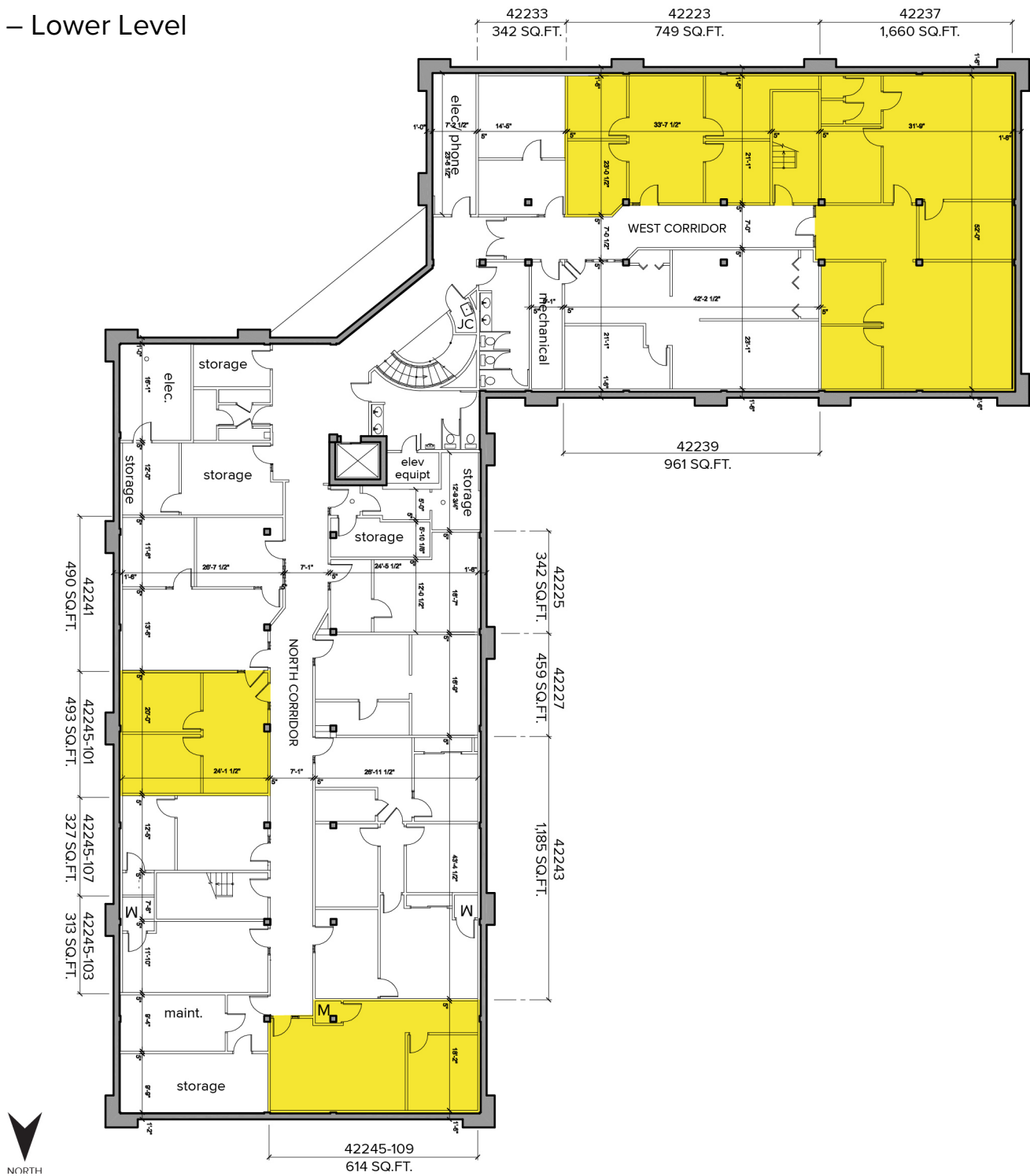
Information is subject to verification and no liability for errors or omissions is assumed. Price is subject to change and listing withdrawal.

42171-42247 Ann Arbor Road - Plymouth, Michigan

Office For Lease

370 – 4,626
Square Feet
AVAILABLE

Floor Plan EAST – Lower Level



For more information, please contact:

JASON STOUGH
(248) 948 4180
jstough@signatureassociates.com

SIGNATURE ASSOCIATES
One Towne Square, Suite 1200
Southfield, MI 48076
www.signatureassociates.com

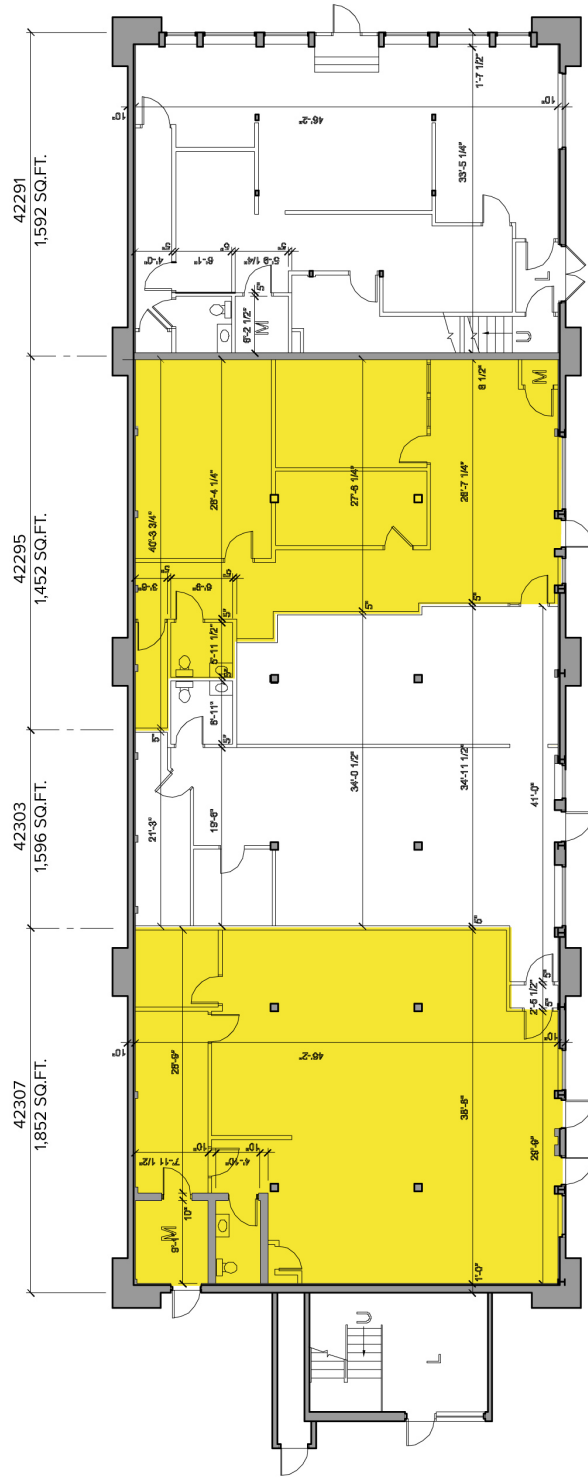
42171-42247 Ann Arbor Road - Plymouth, Michigan

Office For Lease

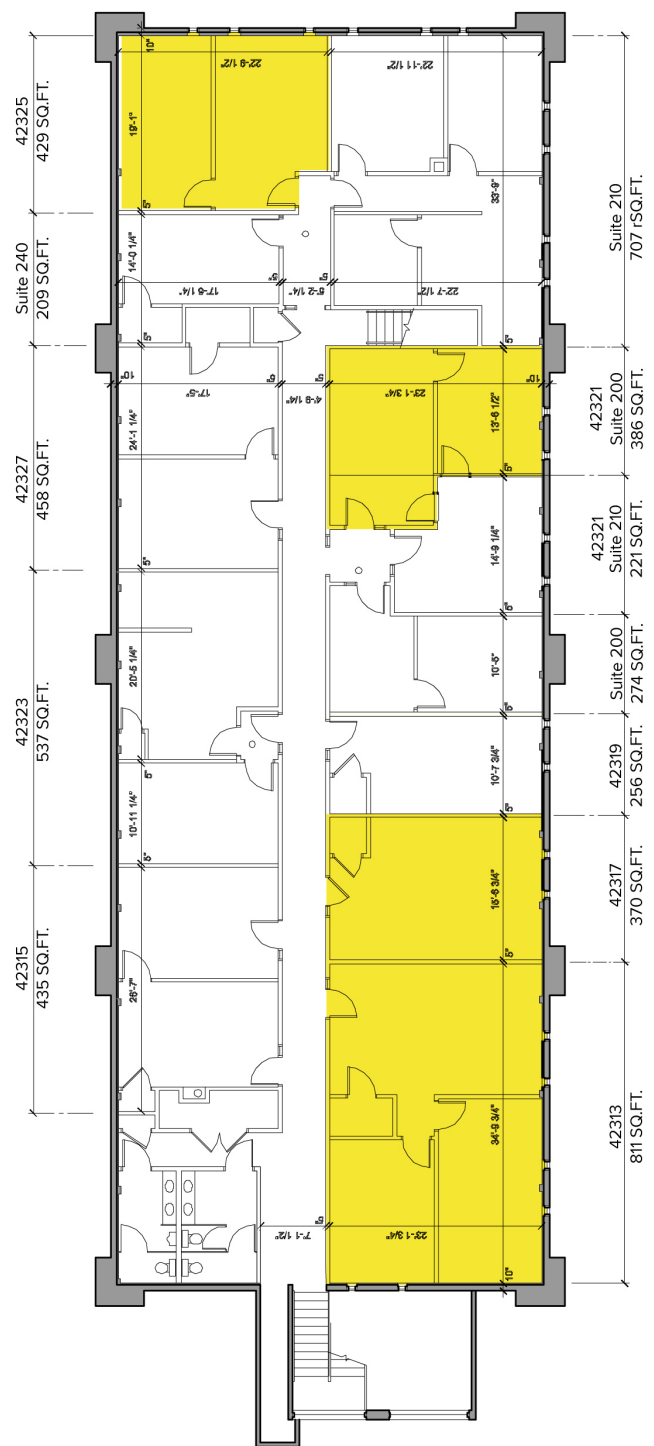
370 – 4,626
Square Feet
AVAILABLE

Floor Plan WEST – First and Second Floor

FIRST FLOOR



SECOND FLOOR



For more information, please contact:

JASON STOUGH
(248) 948 4180
jstough@signatureassociates.com

SIGNATURE ASSOCIATES
One Towne Square, Suite 1200
Southfield, MI 48076
www.signatureassociates.com

Information is subject to verification and no liability for errors or omissions is assumed. Price is subject to change and listing withdrawal.