

Office/FLEX
+/- 1,125 Square Feet



2784 SUGARLOAF PKWY
SUITE 101

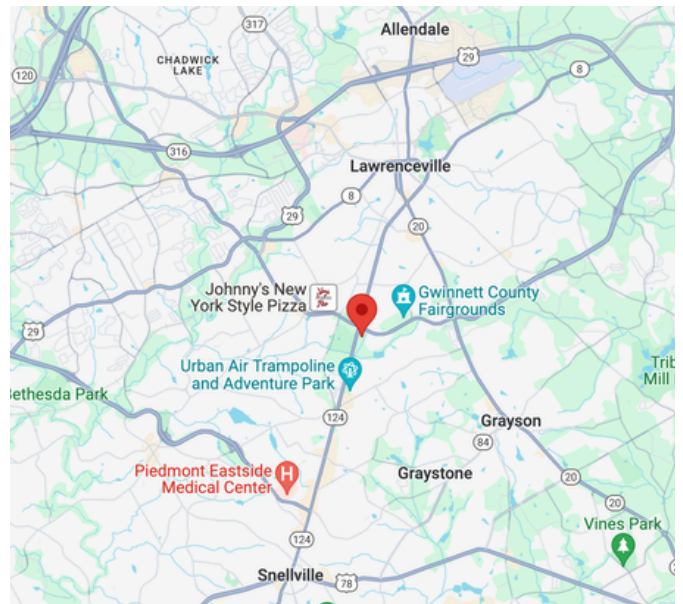
LAWRENCEVILLE, GA

Property Features:

**FOR
LEASE!**

\$1,281.45
RENT

- ±1,125 SF (approx. half office / half warehouse)
- One 12' drive-in roll-up door and one standard entry door
- Interior: Private restroom, efficient layout for office and operations
- CAM \$281.55
- Availability: 30-day rolling notice
- Minutes from Hwy 316, Hwy 78 and I-85
- Conveniently located at the corner of Sugarloaf Parkway and Scenic Hwy in Lawrenceville with great signage visibility.

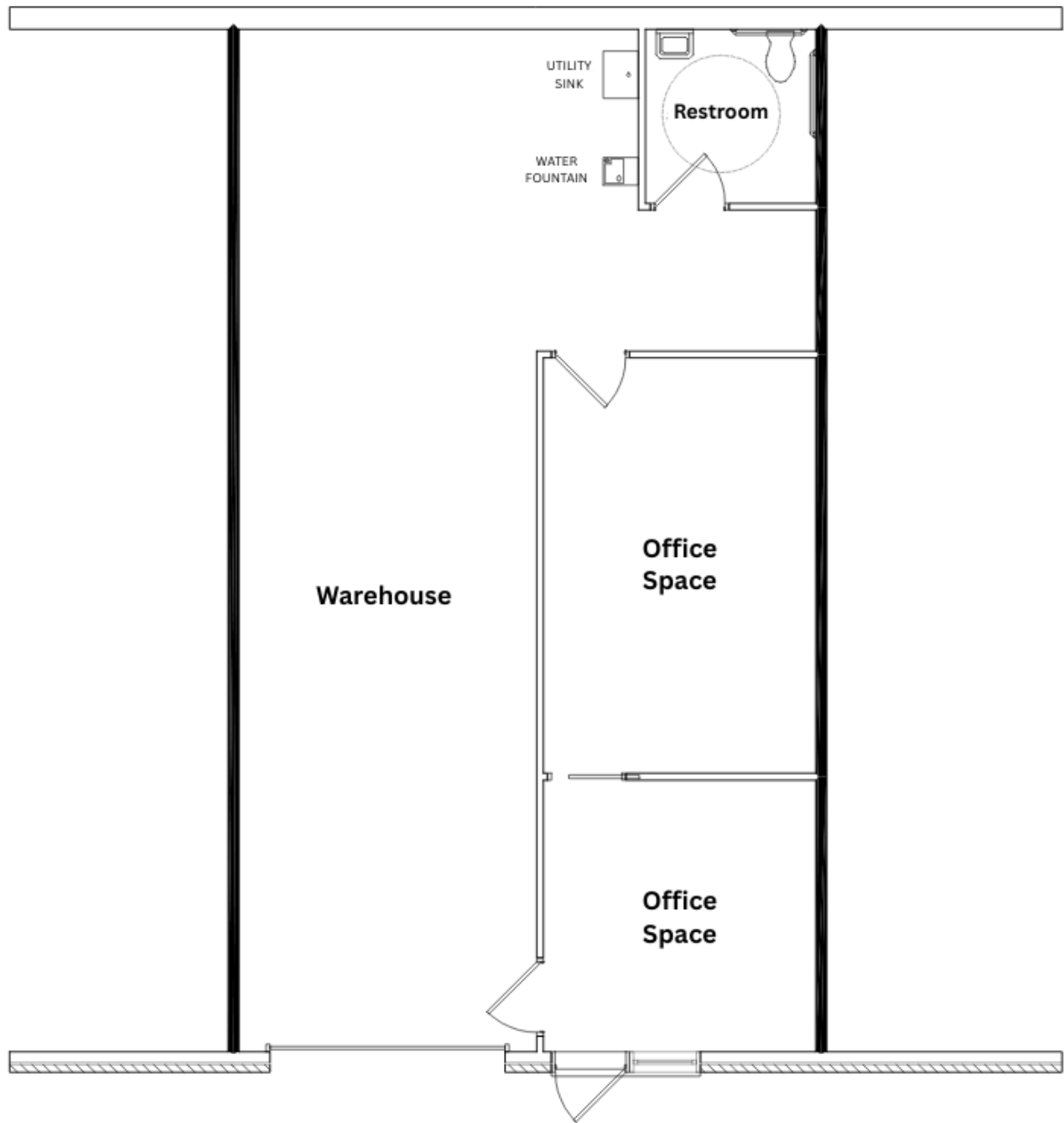


For More Information, Contact:

Rebecca Davis, Summit Real Estate
rdavis@summitgeorgia.com
770-633-4370

2784 Sugarloaf Pkwy
Suite 101
Lawrenceville, GA

Office/FLEX
+/- 1,125 Square Feet



For More Information, Contact:
Rebecca Davis, Summit Real Estate
rdavis@summitgeorgia.com
770-633-4370