

173

HUGUENOT STREET

Sub-divisions from 2,500 SF Available

On-site Parking

Sky Bridge access to New Roc City

Join recently opened



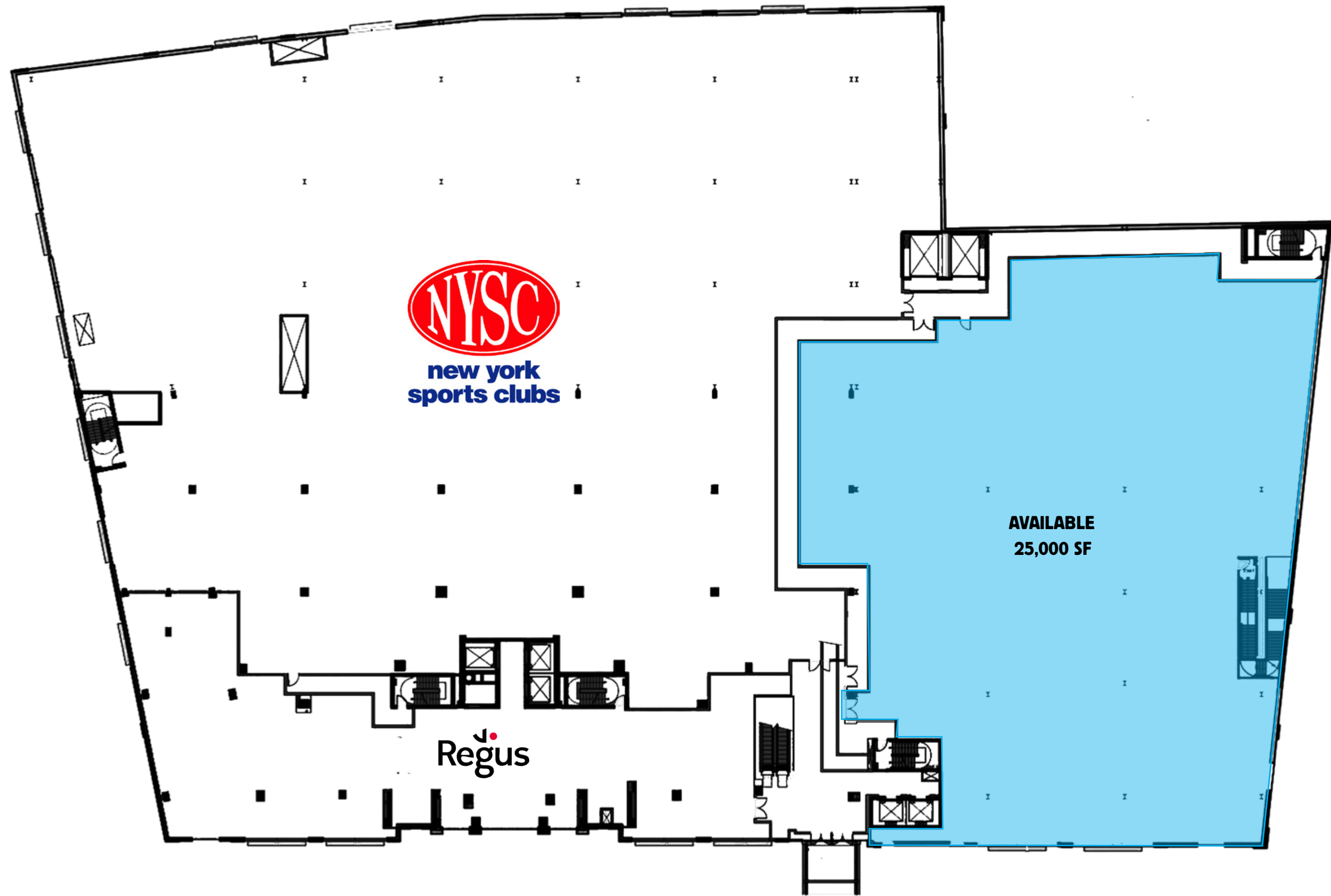
NEW ROCHELLE, NEW YORK



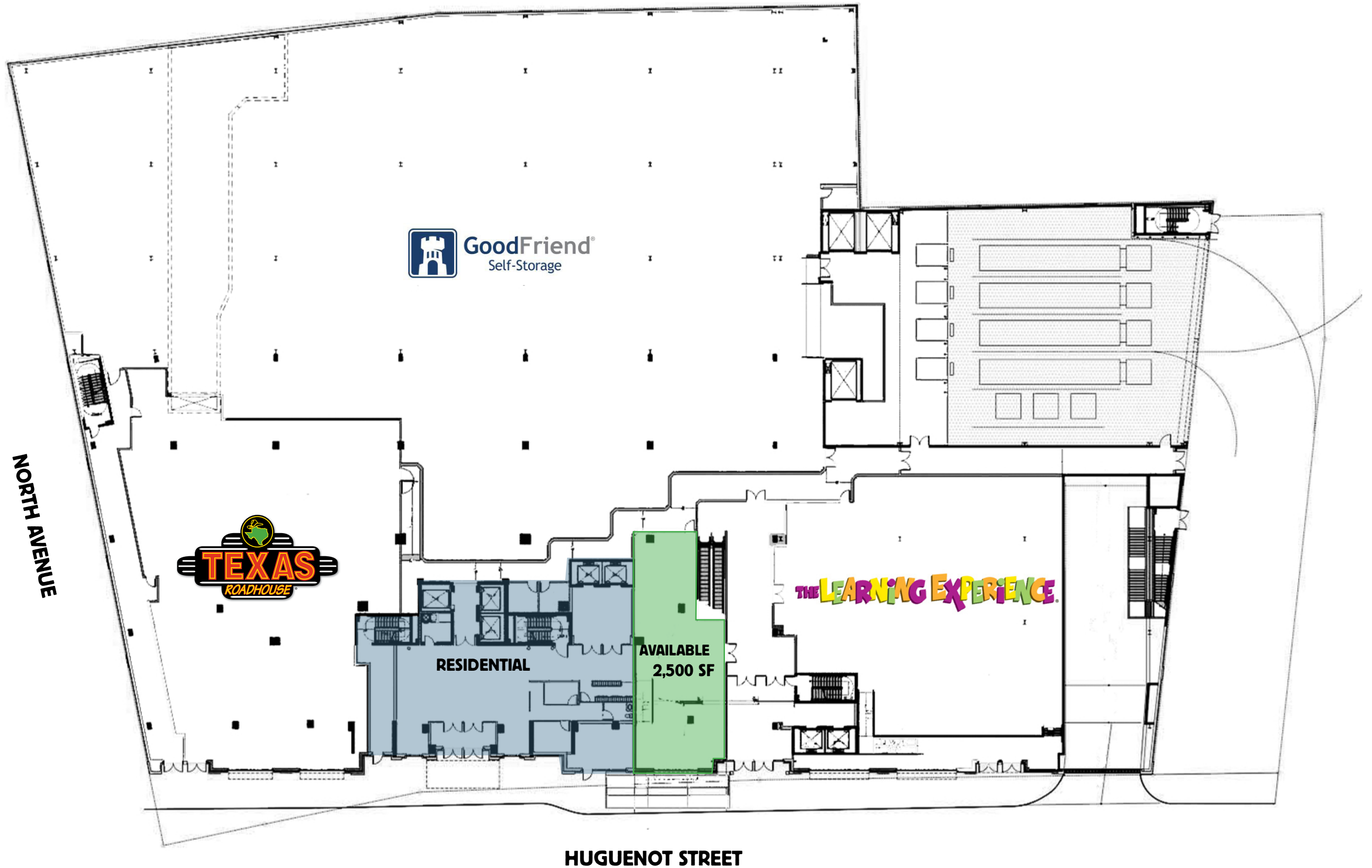
BRIAN VON SCHMID
brian.vonschmid@srsre.com
212.710.5259



SECOND FLOOR SITE PLAN



GROUND FLOOR SITE PLAN



NEW ROCHELLE, NEW YORK

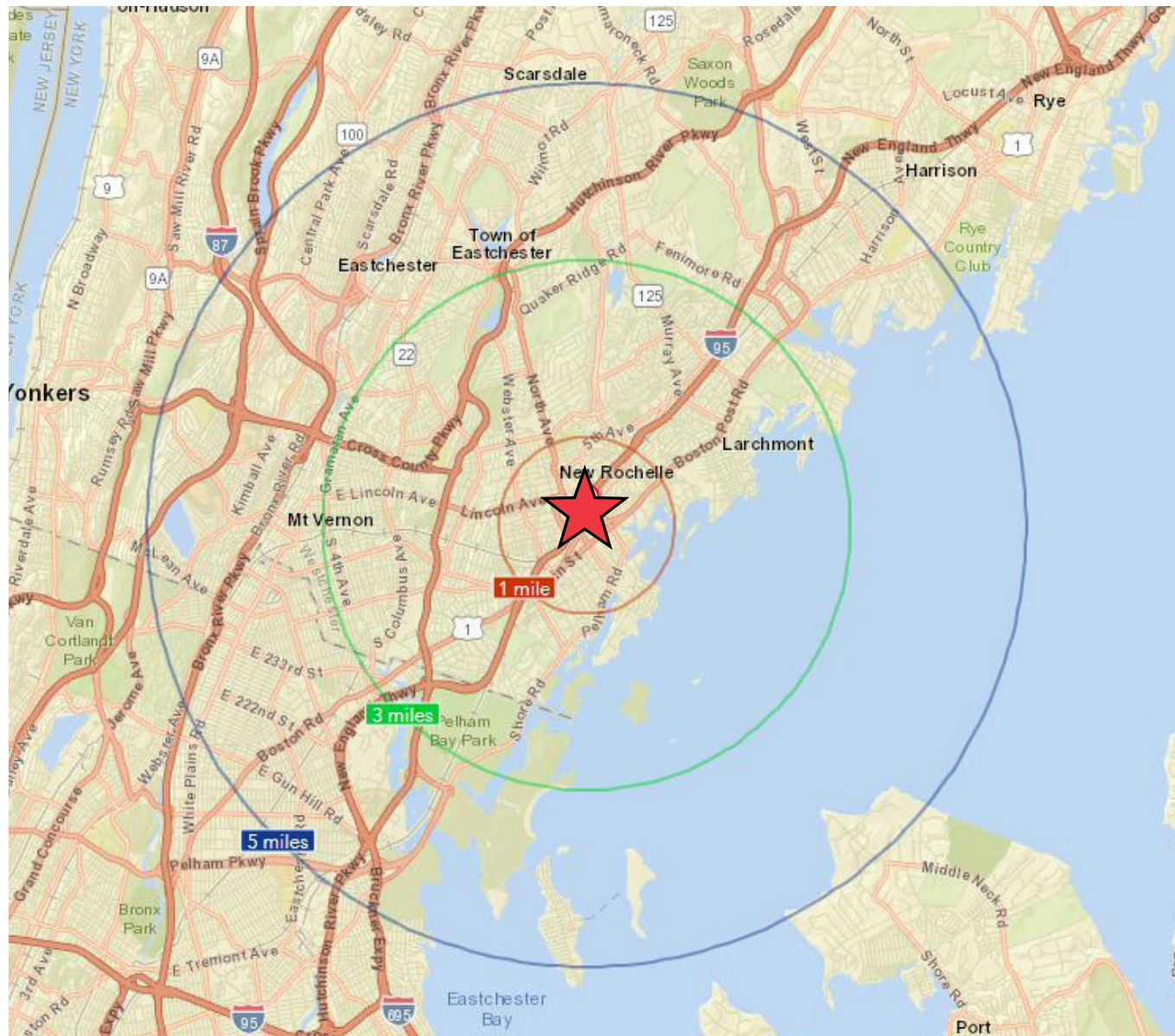
Demographics

	1 Mile	3 Miles	5 Miles
2019 Population	42,641	151,709	513,295
2019 Total Households	14,901	56,003	193,491
2019 Average Household Income	\$83,633	\$133,469	\$110,190

New Rochelle's Downtown Development Map

Close proximity to New Rochelle's \$4 Billion development plan

- 1 million SF of retail
- 4,200 new residential units
- 2.4 million SF of office space
- 6,370 housing units
- 12,000 hotel rooms



Residential Development

1. Newro Studios
11 Burling Lane
2. Millennia
22 Burling Lane
3. The Grand
4. 11 Garden Street
5. 10 Commerce Drive
6. 165 Huguenot Street

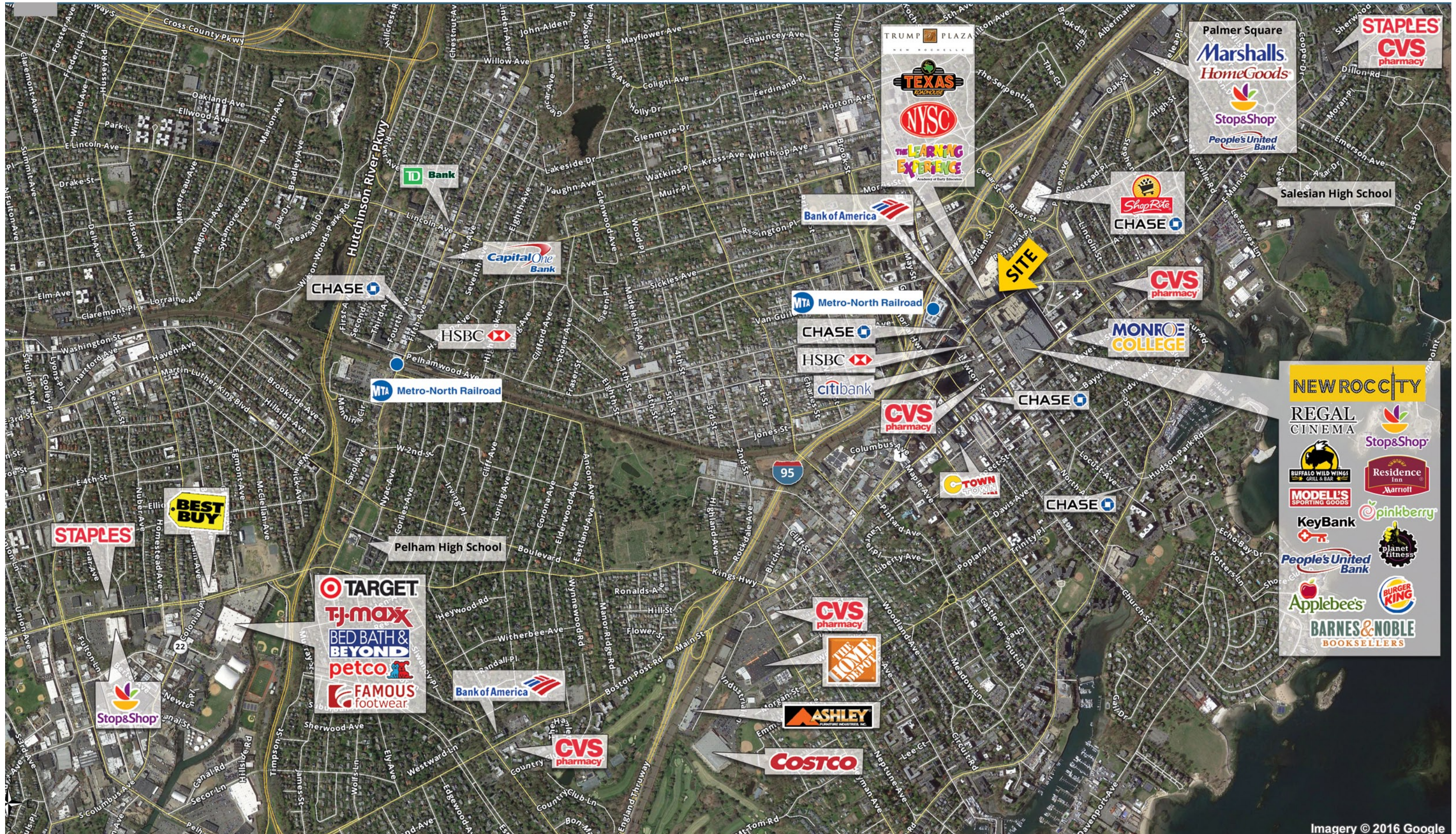
Commercial Development

1. V Hotel
2. Locust Avenue

Mixed-use Development

- | | |
|--|-------------------------------------|
| 1. North Avenue West
585 North Ave | 9. 500 Main Street |
| 2. North Avenue West
600 North Avenue | 10. Church/Division |
| 3. Two Hamilton Avenue
2 Hamilton Ave | 11. 64 Centre Avenue |
| 4. 26 Garden Street | 12. 327 Huguenot Street |
| 5. 277 North Avenue | 13. 339 Huguenot Street |
| 6. 45 Harrison Street | 14. 587 Main Street |
| 7. The Standard
251 North Avenue | 15. The Huguenot
391 Huguenot St |
| 8. 14 Lecount Place | |

AERIAL MAP



Imagery © 2016 Google

NEIGHBORHOOD RETAIL



Downtown Development Plan

- 4,200 new residential units
- 2.4 million SF of new office space
- 1 million SF of new retail development
- 6,370 new housing units
- 12,000 newly constructed hotel rooms

Transit System

- By 2021, New Rochelle will be the only rail station providing MTA service to the East/West sides of Manhattan
- 30 minutes to Grand Central w/ MTA service to Penn Station (Coming Soon)

Sky bridge access to New Roc City

NEW ROCCITY

ADDITIONAL IMAGES



ADDITIONAL IMAGES

