

FOR LEASE

3,809 Square Feet of Premium Office Space on N St Mary's Street

2107 N St Mary's Street, San Antonio, TX 78212



partners

PROPERTY HIGHLIGHTS

■ PRIME LOCATION | North St Mary's Street

2107 N St Mary's St is located on the fast-evolving North St Mary's corridor. The space is fully built-out with modern, high-quality finishes and is move-in ready. It's an ideal office for any professional business that wants a sharp, impressive space that reflects its brand.

LISTED BY:

David Ballard, CCIM
Partner

📞 210.865.7799

✉️ david.ballard@partnersrealestate.com

Brian Heines
Associate

📞 540.628.5465

✉️ brian.heines@partnersrealestate.com

DETAILS



LEASE RATE

Contact Broker



SPACE AVAILABLE

3,809 SF



LAYOUT

- 2 Large Rooms
- 2 Private Offices
- Reception Area
- Kitchen in Place
- 450 SF Warehouse Portion



KEY FEATURES

- 12 Parking Spaces
- Great Signage Opportunity
- High Quality Finish Out
- Less than a 2 minute drive or 10 minute walk to the Pearl
- Numerous restaurants within walking distance

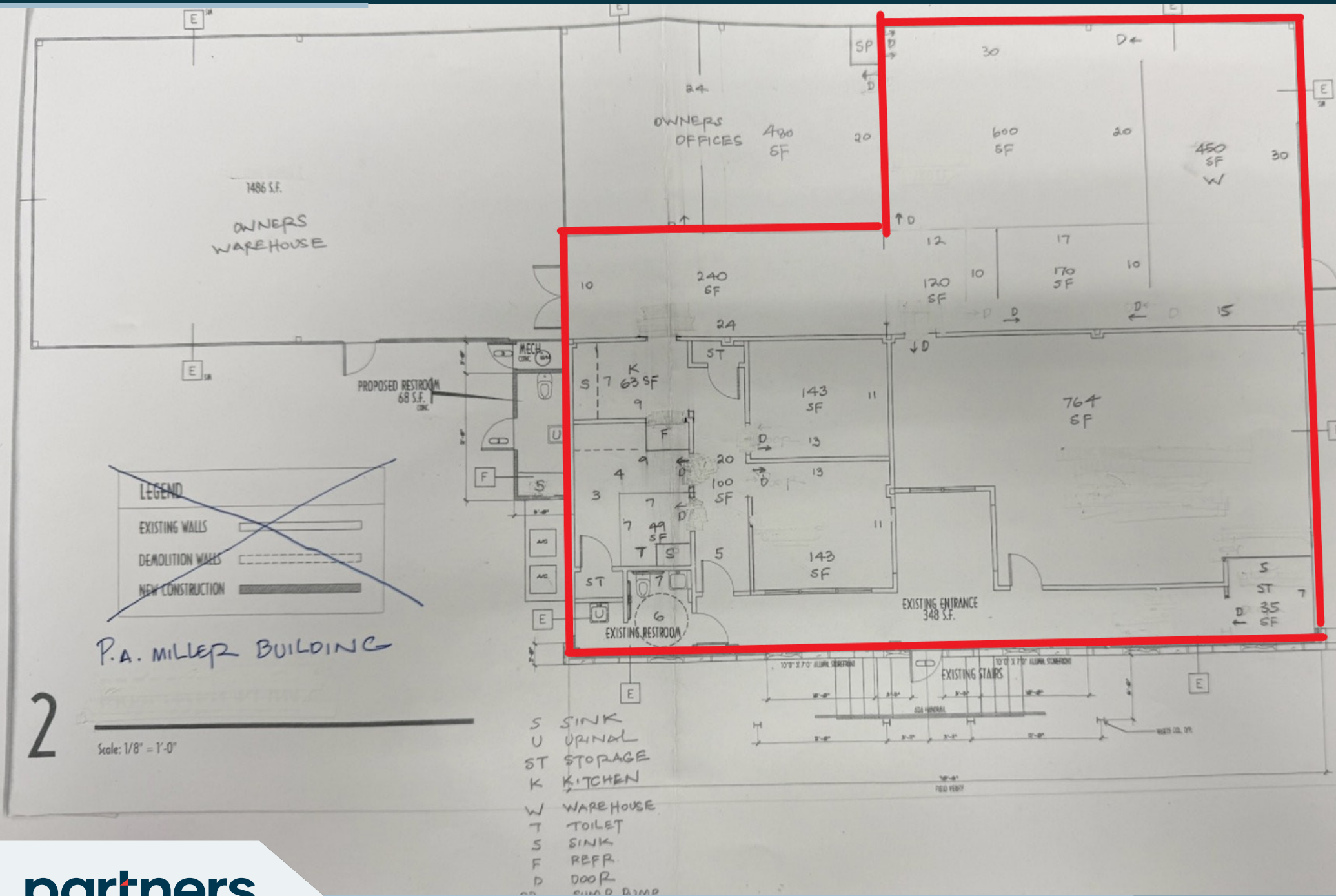
INTERIOR PHOTOS

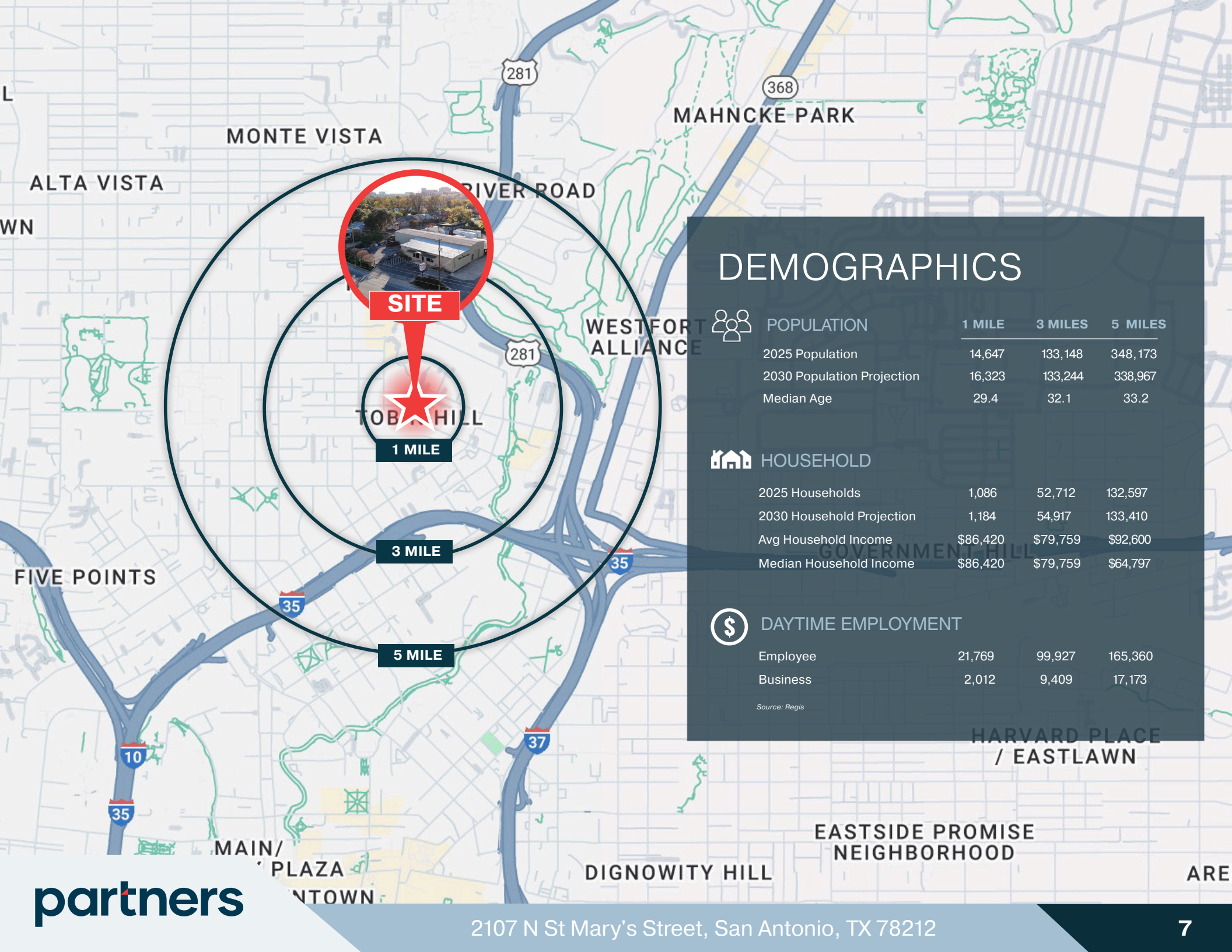


AERIAL OVERVIEW



FLOORPLAN





DEMOGRAPHICS



POPULATION

	1 MILE	3 MILES	5 MILES
2025 Population	14,647	133,148	348,173
2030 Population Projection	16,323	133,244	338,967
Median Age	29.4	32.1	33.2



HOUSEHOLD

2025 Households	1,086	52,712	132,597
2030 Household Projection	1,184	54,917	133,410
Avg Household Income	\$86,420	\$79,759	\$92,600
Median Household Income	\$86,420	\$79,759	\$64,797



DAYTIME EMPLOYMENT

Employee	21,769	99,927	165,360
Business	2,012	9,409	17,173

Source: Regis





DISCLAIMER

This offering memorandum is for general information only. No information, forward looking statements, or estimations presented herein represent any final determination on investment performance. While the information presented in this offering memorandum has been researched and is thought to be reasonable and accurate, any real estate investment is speculative in nature. Partners and/or its agents cannot and do not guarantee any rate of return or investment timeline based on the information presented herein.

By reading and reviewing the information contained in this offering memorandum, the user acknowledges and agrees that Partners and/or its agents do not assume and hereby disclaim any liability to any party for any loss or damage caused by the use of the information contained herein, or errors or omissions in the information contained in this offering memorandum, to make any investment decision, whether such errors or omissions result from negligence, accident or any other cause.

Investors are required to conduct their own investigations, analysis, due diligence, draw their own conclusions, and make their own decisions. Any areas concerning taxes or specific legal or technical questions should be referred to lawyers, accountants, consultants, brokers, or other professionals licensed, qualified or authorized to render such advice.

In no event shall Partners and/or its agents be liable to any party for any direct, indirect, special, incidental, or consequential damages of any kind whatsoever arising out of the use of this offering memorandum or any information contained herein. Partners and/or its agents specifically disclaim any guarantees, including, but not limited to, stated or implied potential profits, rates of return, or investment timelines discussed or referred to herein.