

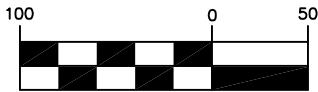
ARCTURUS GROUP, LLC

CIVIL ENGINEERS – PLANNERS – SURVEYORS
 2328 U.S. HIGHWAY 19, HOLIDAY, FLORIDA 34691
 727-940-8888

CERTIFICATE OF AUTHORIZATION LB 8069

FOR THE BENEFIT OF: JOMAR DEVELOPMENT & CONSTRUCTION, INC.

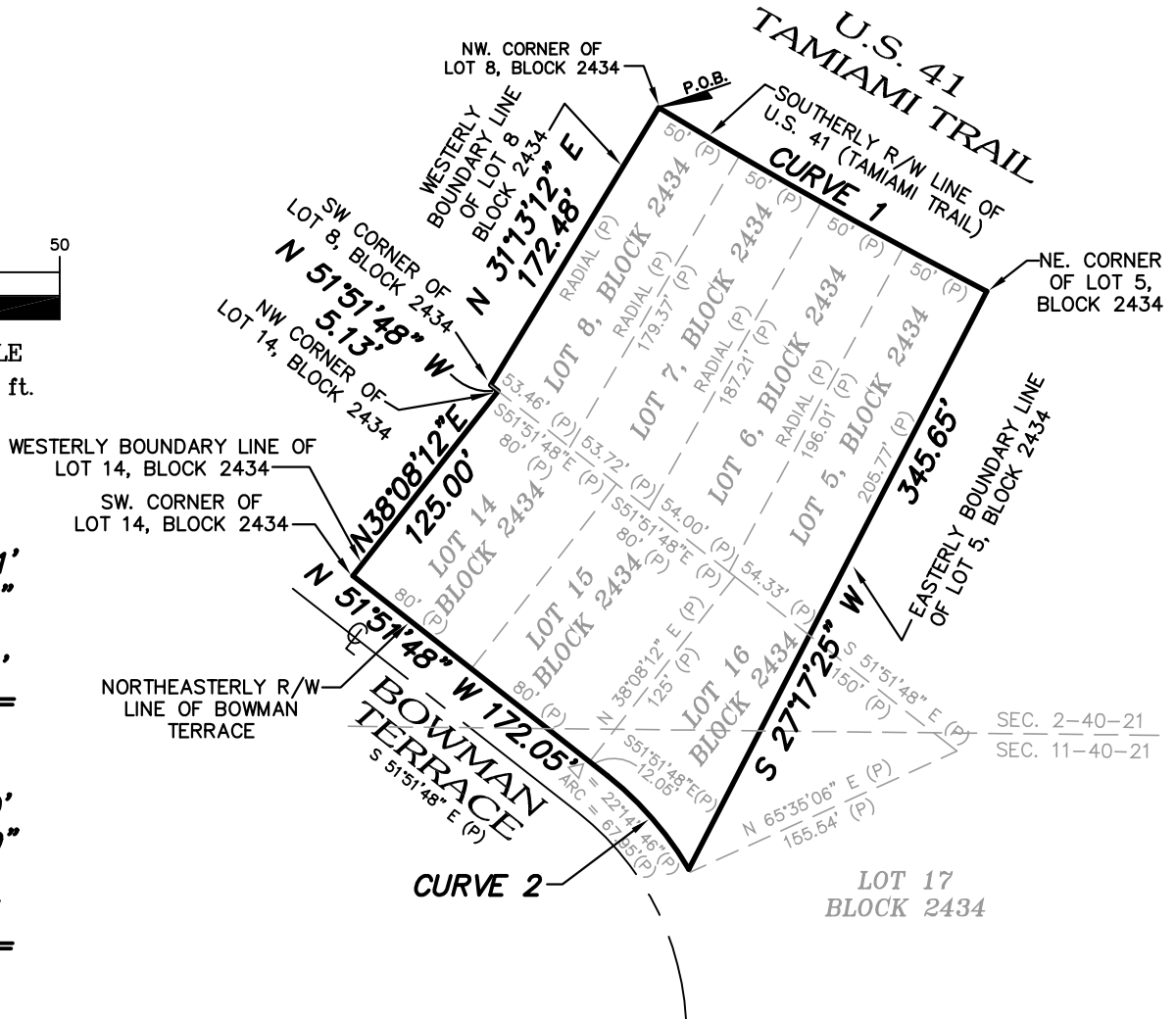
JOB NUMBER: 2013030-LS2
 SECTIONS 2 & 11, TOWNSHIP 40 SOUTH, RANGE 21 EAST
 CHARLOTTE COUNTY, FLORIDA



GRAPHIC SCALE
 1 inch = 100 ft.

CURVE 1
 RADIUS = 2916.11'
 DELTA = 3°55'46"
 ARC = 200.00'
 CHORD = 199.96'
 CHORD BEARING =
 S 60°44'41" E

CURVE 2
 RADIUS = 175.00'
 DELTA = 21°40'59"
 ARC = 66.23'
 CHORD = 65.83'
 CHORD BEARING =
 N 41°01'19" W



SKETCH - SEE PAGE 1 FOR LEGAL DESCRIPTION

SURVEYOR'S NOTES:

- 1.) NOT A BOUNDARY SURVEY.
- 2.) THE BASIS OF BEARINGS FOR THIS SKETCH AND LEGAL DESCRIPTION IS THE CENTERLINE OF BOWMAN TERRACE BEING S 51°51'48" E PER THE PLAT OF PORT CHARLOTTE SUBDIVISION SECTION TWENTY NINE (PLAT BOOK 5, PAGES 22A THROUGH 22G, PUBLIC RECORDS OF CHARLOTTE COUNTY, FLORIDA.
- 3.) THERE ARE EASEMENTS RECORDED IN PLAT BOOK 5, PAGE 22 THAT ARE NOT SHOWN ON THIS LEGAL DESCRIPTION AND SKETCH.
- 4.) NOT COMPLETE WITHOUT PAGE 1.

CERTIFIED AS A DESCRIPTION AND SKETCH

EDWARD C. ELLIOTT, P.S.M. 6113
 STATE OF FLORIDA PROFESSIONAL SURVEYOR AND MAPPER

UNLESS IT BEARS THE SIGNATURE AND THE ORIGINAL RAISED SEAL OF A FLORIDA LICENSED SURVEYOR AND MAPPER THIS DRAWING, SKETCH, PLAT OR MAP IS FOR INFORMATIONAL PURPOSES ONLY AND IS NOT VALID.