



**607 South Broadway**

Suite 607G, Boulder, CO

## High Traffic South Boulder Retail Space

**Michael-Ryan McCarty**  
mccarty@gibbonswhite.com  
(303) 586-5939

**Patrick Weeks**  
patrick@gibbonswhite.com  
(303) 586-5935

www.gibbonswhite.com

**Property Info & Gallery**

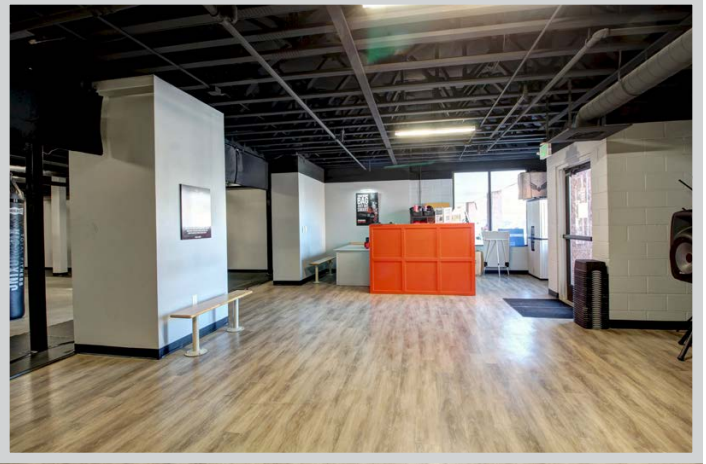
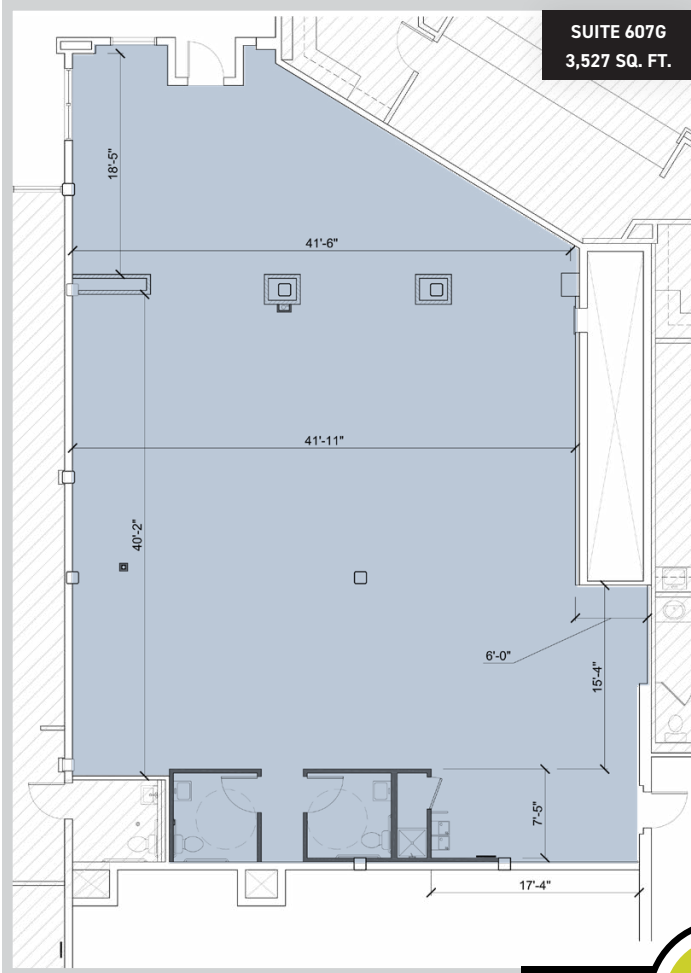
**View Map**

|                      |               |
|----------------------|---------------|
| Available Space      | 3,527 sq. ft. |
| Lease Rate / sq. ft. | \$14.00 NNN   |
| Expenses / sq. ft.   | \$9.17*       |

*\*Not Including Utilities*

- First Floor Retail Space in Bustling Table Mesa Shopping Center
- Currently Built Out as a Fitness Studio but Perfect for a Wide Array of Uses
- Incredibly Vibrant Shopping Center with Southern Sun, Snarf's, Moe's Bagels, Neptune Mountaineering, King Soopers & Whole Foods
- Daily Traffic Counts of 28,296 at Table Mesa & Broadway (DRCOG 2021)
- Sublease Through April 2028 with Longer Direct Term Available

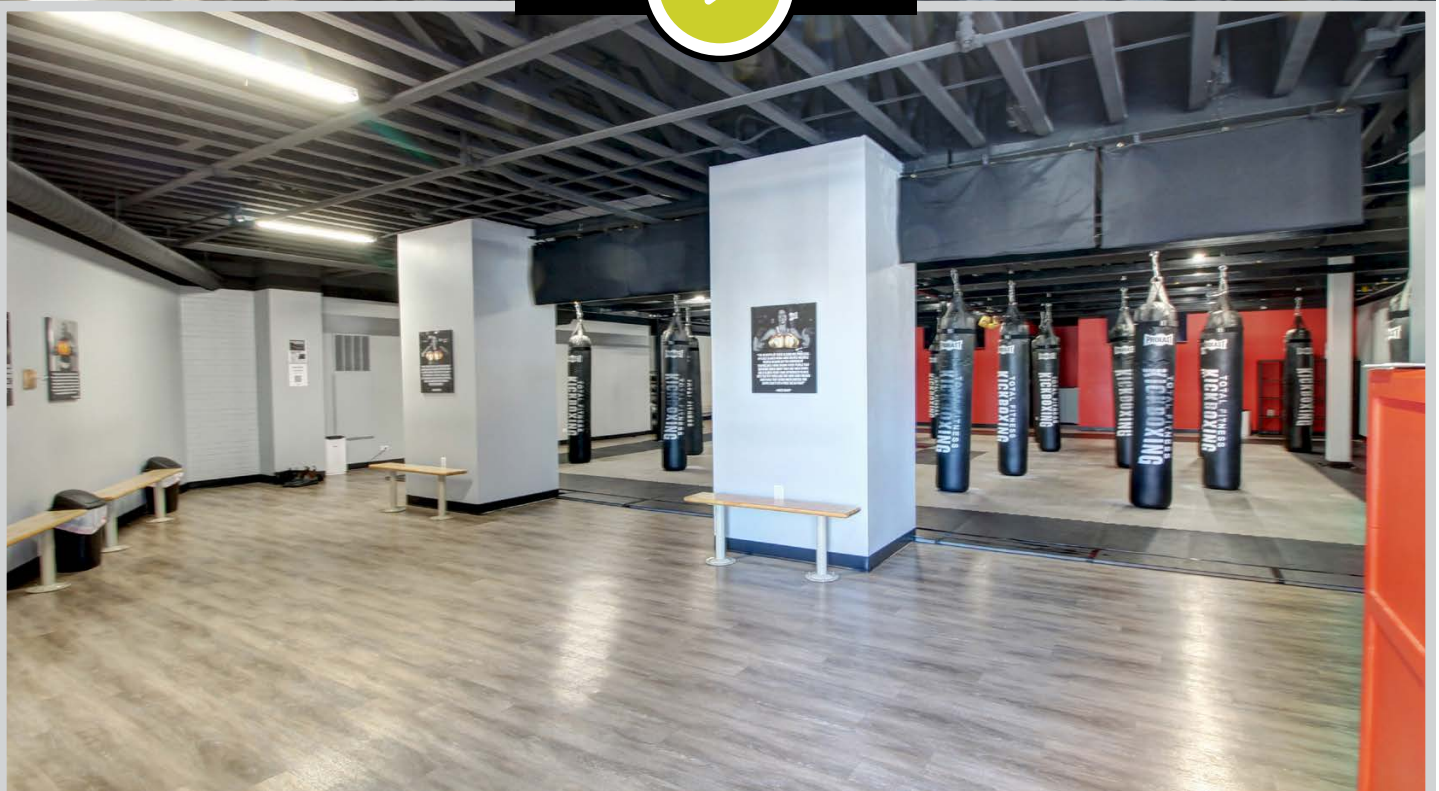
© 2025 Gibbons-White, Inc.



VIDEO



TOUR



© 2025 Gibbons-White, Inc.