

Land | For Sale

CBRE

Greenland Acres

Greenland, Arkansas

W Napier Dr & NE Campbell Rd
Greenland, AR 72737
www.cbre.com/fayetteville

Tract 1: \$1,350,000 | Tract 4: \$960,000



Land Lots

SWC of W. Napier Dr. & NE Campbell Dr. | Greenland, AR 72737

For Sale

Property Highlights

Tract 1

- + \$1,350,000
- + Septic Required
- + ±660' of frontage along W Napier Dr
- + ±390' of frontage along NE Campbell Rd

Tract 4

- + \$960,000
- + Septic Required
- + ±392' of frontage along NE Campbell Rd



I-1

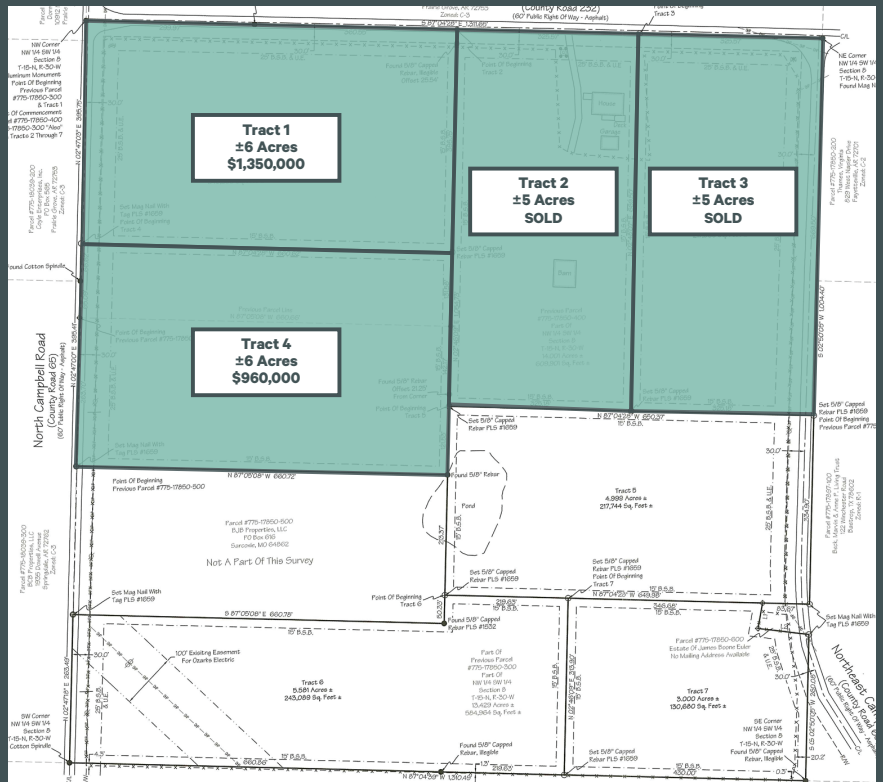
Zoning

±6 Acres

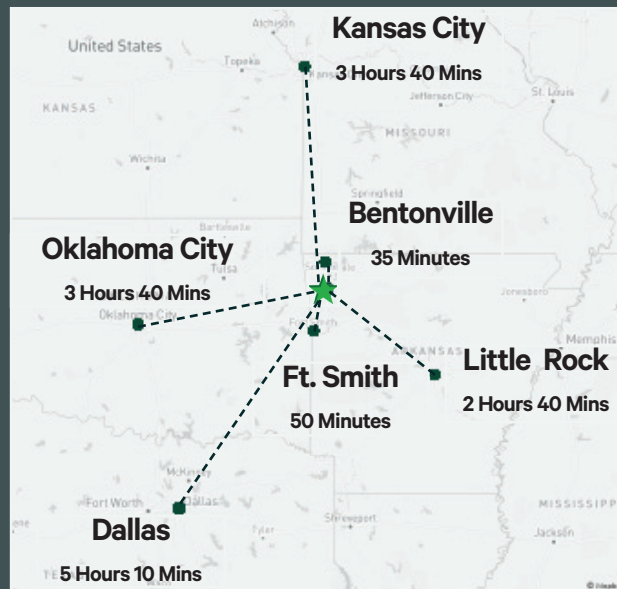
Per Tract

0.4 Miles

From Interstate 49



Location Analytics



Facility	Location	Time to Site
JB Hunt Headquarters	615 JB Hunt Corporate Dr., Lowell, AR 72745	20 Minutes
Tyson Foods Headquarters	2100 S Old Mississippi Rd., Springdale, AR 72764	20 Minutes
Wal-Mart Headquarters	702 S.W. 8th St., Bentonville, AR 72716	35 Minutes
Arkansas Missouri Railroad HQ	306 E. Emma Ave., Springdale, AR 72764	25 Minutes
George's Headquarters	402 W. Robinson Ave., Springdale, AR 72764	20 Minutes
Harps Headquarters	918 S. Gutensohn Rd., Springdale, AR 72762	20 Minutes
University of Arkansas	1 W. Maple St., Fayetteville, AR 72701	15 Minutes
XNA	1 Airport Blvd., Bentonville, AR 72712	35 Minutes

Contact Us

David Erstine SIOR, CCIM

Senior Vice President

+1 479 249 6199

david.erstine@cbre.com

Alex Schemel

Associate

+1 479 444 2549

alex.schemel@cbre.com

© 2022 CBRE, Inc. All rights reserved. This information has been obtained from sources believed reliable, but has not been verified for accuracy or completeness. You should conduct a careful, independent investigation of the property and verify all information. Any reliance on this information is solely at your own risk. CBRE and the CBRE logo are service marks of CBRE, Inc. All other marks displayed on this document are the property of their respective owners, and the use of such logos does not imply any affiliation with or endorsement of CBRE. Photos herein are the property of their respective owners. Use of these images without the express written consent of the owner is prohibited.