



**Keegan & Coppin**  
COMPANY, INC.

FOR LEASE

1281 ANDERSEN DRIVE  
SAN RAFAEL, CA

Light Industrial Space Available



Go beyond broker.

REPRESENTED BY:

**NATHAN BALLARD, PARTNER**  
LIC # 01743417 (415) 461-1010, EXT 116  
[NBALLARD@KEEGANCOPPIN.COM](mailto:NBALLARD@KEEGANCOPPIN.COM)

**THEO BANKS, PARTNER**  
LIC # 01359605 (415) 461-1010, EXT 130  
[TBANKS@KEEGANCOPPIN.COM](mailto:TBANKS@KEEGANCOPPIN.COM)





# LIGHT INDUSTRIAL FOR LEASE



1281 ANDERSEN DRIVE  
SAN RAFAEL, CA

LIGHT INDUSTRIAL  
SPACE

## PROPERTY INFORMATION

### HIGHLIGHTS

- Abundant on-site parking
- Clear height - 17'
- Sprinkler system in place
- Drive-around access
- Immediate access to Hwy 101 and Int 580
- 3-phase power
- Grade level roll-up doors
- Extremely well maintained

### SPACE

**Suite A:** 4,852+/- sq ft

### DESCRIPTION

3,465+/- sq ft warehouse, 1,387+/- sq ft office

### LEASE TERMS

#### Size

4,852+/- sq ft

#### Rate

\$1.65 per sq ft

#### Terms

Industrial gross

\$0.07 CAM charges

#### Parking

37 spaces on-site

#### Zoning

LI/O

Keegan & Coppin Co., Inc.  
101 Larkspur Landing Circle, Ste. 112  
Larkspur, CA 94939  
www.keegancoppin.com  
(415) 461-1010

The above information, while not guaranteed, has been secured from sources we believe to be reliable. Submitted subject to error, change or withdrawal. An interested party should verify the status of the property and the information herein.

REPRESENTED BY:

**NATHAN BALLARD, PARTNER**  
LIC # 01743417 (415) 461-1010, EXT 116  
NBALLARD@KEEGANCOPPIN.COM

**THEO BANKS, PARTNER**  
LIC # 01359605 (415) 461-1010, EXT 130  
TBANKS@KEEGANCOPPIN.COM



# LIGHT INDUSTRIAL FOR LEASE



1281 ANDERSEN DRIVE  
SAN RAFAEL, CA

LIGHT INDUSTRIAL  
SPACE

## DESCRIPTION OF AREA

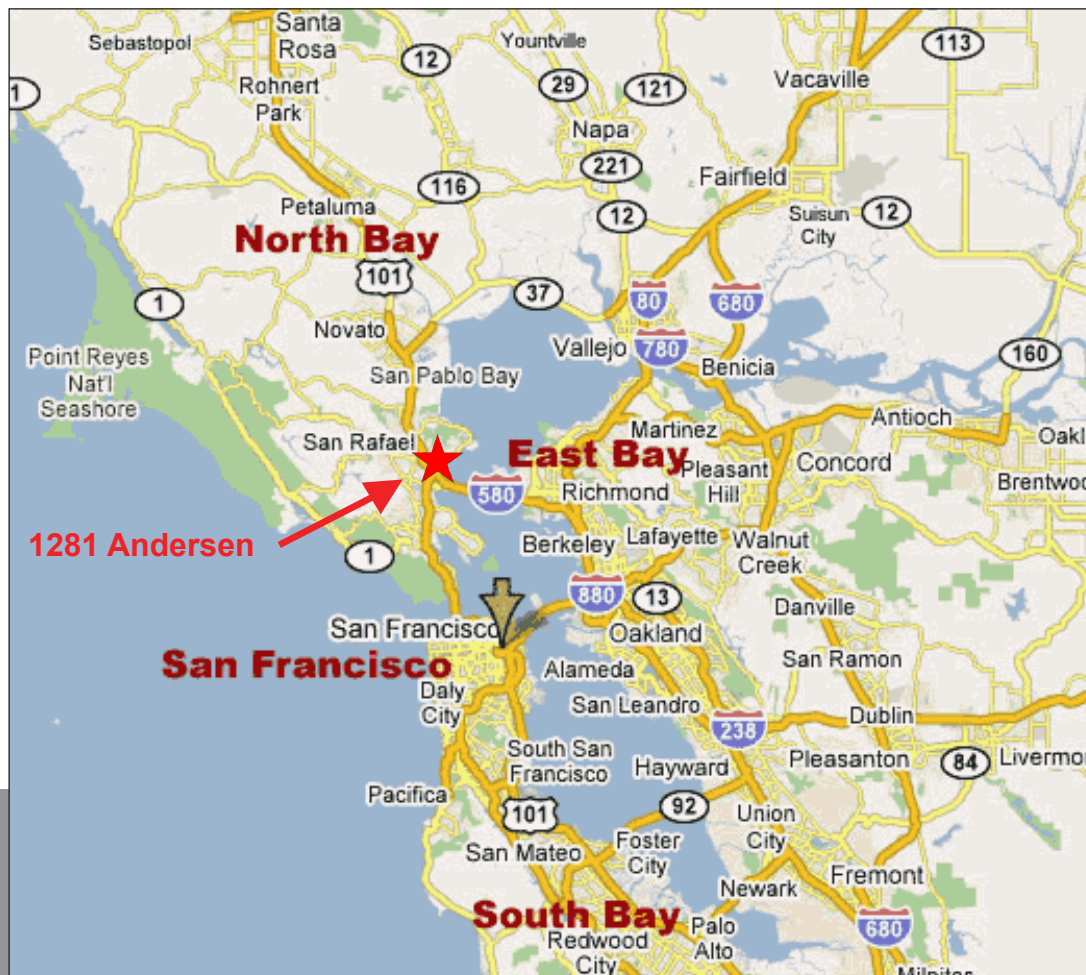
Best East San Rafael location in the Andersen Drive corridor with immediate access to Highway 101 and Interstate 580. Convenient to the Richmond and Golden Gate Bridges, and close to many services and amenities including the Golden Gate Ferry and multiple lodging options.

## NEARBY AMENITIES

- Marin Country Mart
- U.S. Post Office
- Marin Sanitary Service / Recycling Center
- The Home Depot

## TRANSPORTATION ACCESS

- Immediate access to Hwy 101 and Int 580
- Close proximity to:
  - Marin Airporter
  - Larkspur Ferry Terminal
  - Larkspur SMART Train Station
  - Golden Gate Transit



REPRESENTED BY:

**NATHAN BALLARD, PARTNER**  
LIC # 01743417 (415) 461-1010, EXT 116  
NBALLARD@KEEGANCOPPIN.COM

**THEO BANKS, PARTNER**  
LIC # 01359605 (415) 461-1010, EXT 130  
TBANKS@KEEGANCOPPIN.COM

The above information, while not guaranteed, has been secured from sources we believe to be reliable. Submitted subject to error, change or withdrawal. An interested party should verify the status of the property and the information herein.

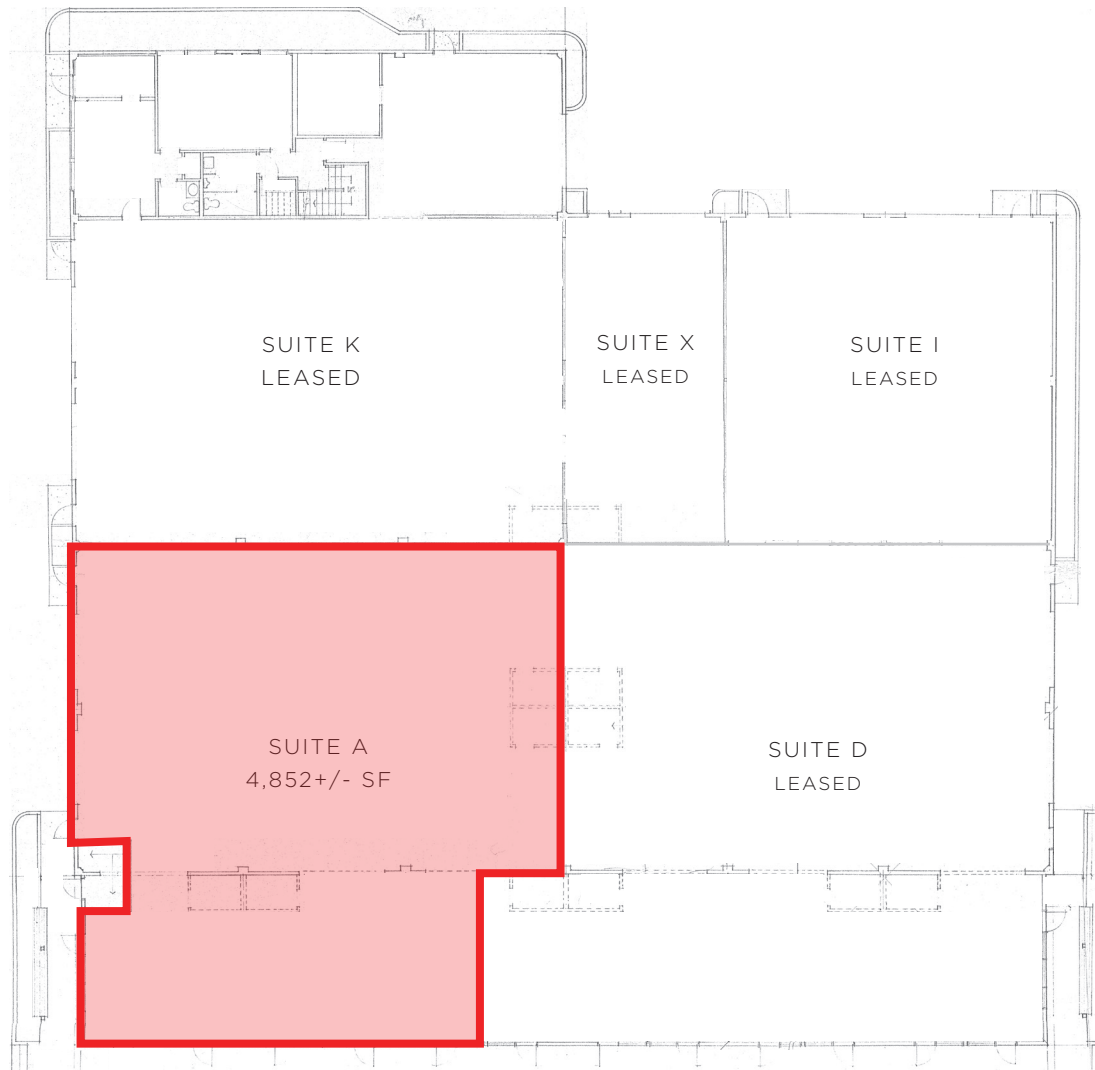


## FLOOR PLAN



1281 ANDERSEN DRIVE  
SAN RAFAEL, CA

LIGHT INDUSTRIAL  
SPACE



**REPRESENTED BY:**

**NATHAN BALLARD, PARTNER**  
KEEGAN & COPPIN CO., INC.  
LIC # 01743417 (415) 461-1010, EXT 116  
NBALLARD@KEEGANCOPPIN.COM

**THEO BANKS, PARTNER**  
KEEGAN & COPPIN CO., INC.  
LIC # 01359605 (415) 461-1010, EXT 130  
TBANKS@KEEGANCOPPIN.COM