

FOR LEASE

537 LONG POINT RD,
MT PLEASANT, SC 29464

THE OFFICES
PORTSIDE

THE OFFICES
PORTSIDE

EXTENSIVE BUILDING RENOVATIONS UNDERWAY
MULTIPLE SUITES AVAILABLE NOW

RCB
DEVELOPMENT

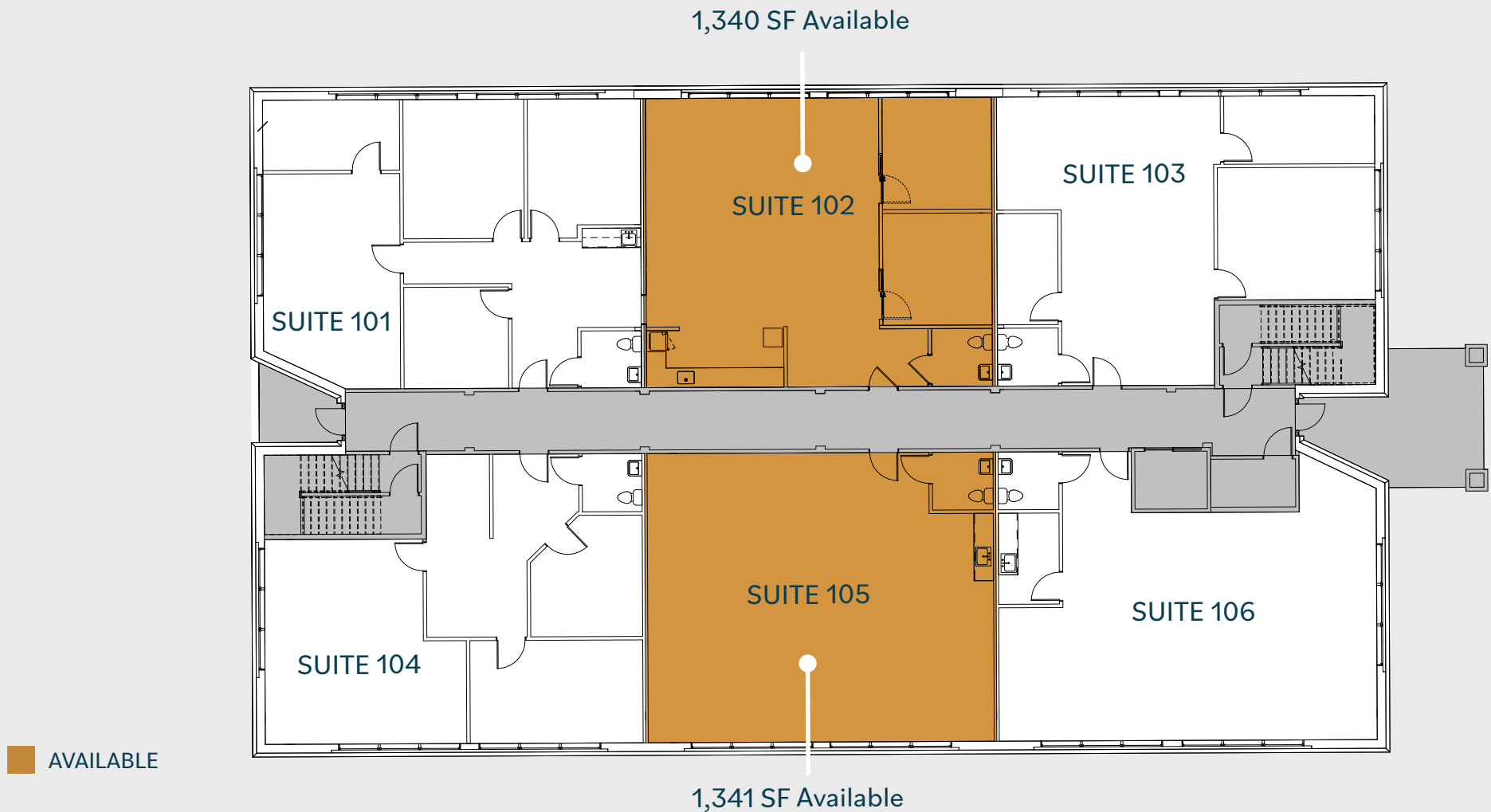


537

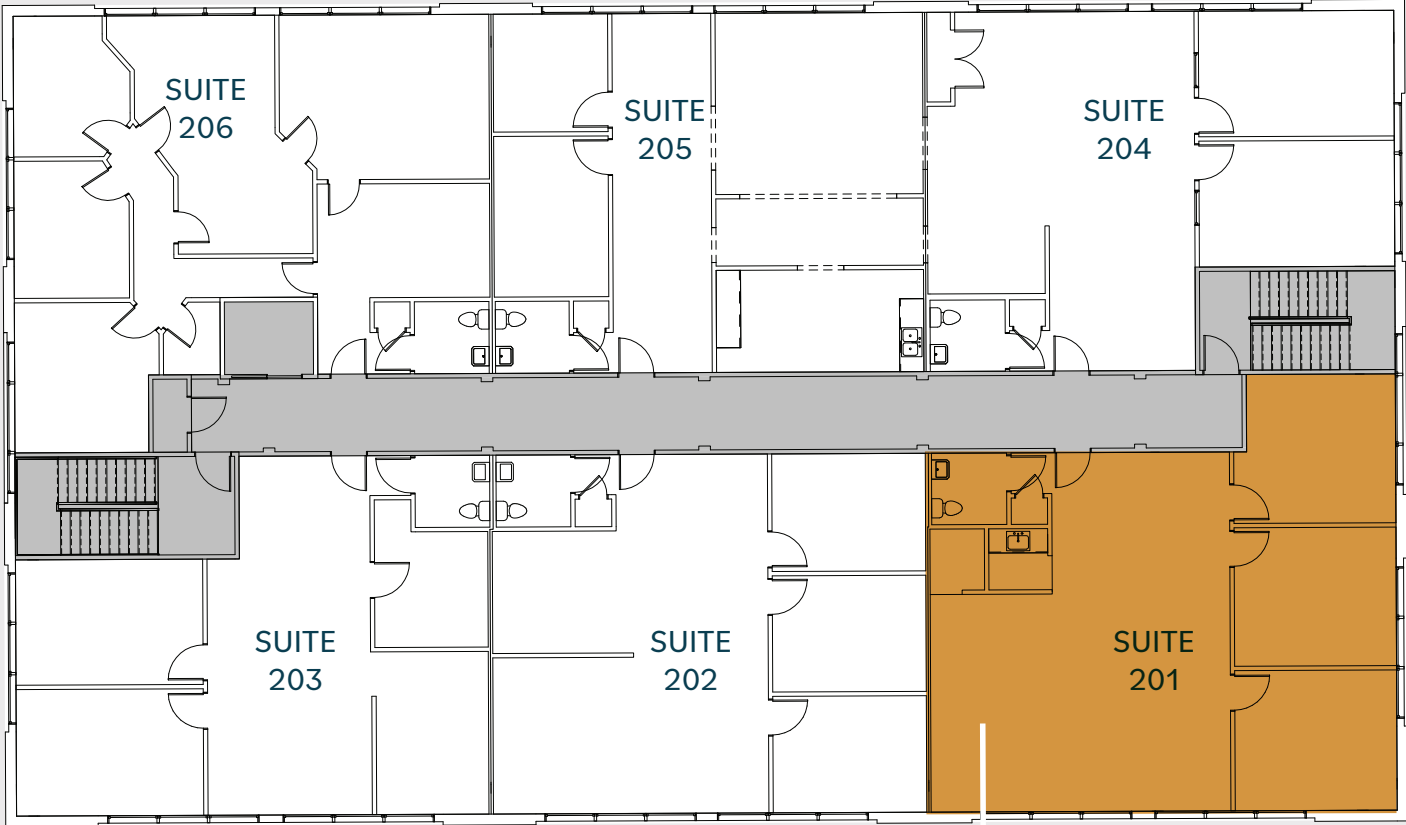
FIRST FLOOR

New Building Improvements Underway:

- Exterior painting
- New entry sconces
- Exterior pressure washing
- Interior painting
- New interior corridor doors
- Updated interior flooring refresh
- New water fountain with bottle filler



SECOND FLOOR



AVAILABLE

1,538 SF Available



PRIME LOCATION

Near Long Point Rd & I-526, easily accessible from Mount Pleasant & Charleston suburbs.



LEASING INFORMATION:

Brian Connolly

Senior Managing Director

brian.connolly@jll.com

+1 (202) 316-4846

Although information has been obtained from sources deemed reliable, JLL does not make any guarantees, warranties or representations, express or implied, as to the completeness or accuracy as to the information contained herein. Any projections, opinions, assumptions or estimates used are for example only. There may be differences between projected and actual results, and those differences may be material. JLL does not accept any liability for any loss or damage suffered by any party resulting from reliance on this information. If the recipient of this information has signed a confidentiality agreement with JLL regarding this matter, this information is subject to the terms of that agreement. ©2026 Jones Lang LaSalle Brokerage, Inc. All rights reserved.