

# Gilbert Cove

1400 North Gilbert Road | Gilbert, AZ



## Office/Medical Suite For Lease

### Available For Lease

- Suite H: ±2,738 SF

- High End Interiors
- Central Courtyard Area
- 5.21:1,000 Parking Ratio
- Covered Parking Available/Additional Cost
- Building Signage Available
- C-1 Zoning, City of Gilbert
- Frontage on Gilbert Rd
- One (1) Mile From US-60
- One (1) Block South of Baseline
- Located on the West Side of Gilbert Rd
- Close Amenities: Sam's Club, Retail, and Restaurants



### Tyson Breinholt

D: 480.966.7513

M: 602.315.7131

tbreinholt@cpiaz.com

### Cliff Jenkins

D 480.634.2332

M 480.888.6017

cjenkins@cpiaz.com



**COMMERCIAL PROPERTIES INC.**

Locally Owned. Globally Connected. CORFAC INTERNATIONAL

TEMPE: 2323 W. University Drive, Tempe, AZ 85281 | 480.966.2301  
SCOTTSDALE: 8777 N. Gainey Center Dr., Suite 245, Scottsdale, AZ 85258 | www.cpiaz.com

The information contained herein has been obtained from various sources. We have no reason to doubt its accuracy; however, J & J Commercial Properties, Inc. has not verified such information and makes no guarantee, warranty or representation about such information. The prospective buyer or lessee should independently verify all dimensions, specifications, floor plans, and all information prior to the lease or purchase of the property. All offerings are subject to prior sale, lease, or withdrawal from the market without prior notice. Effective 12/03/24

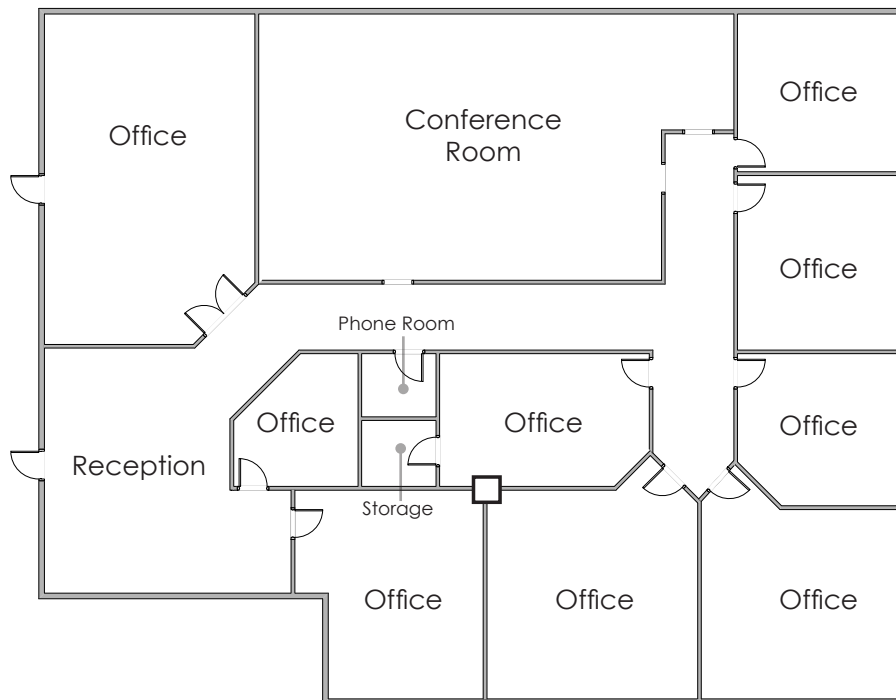
# Gilbert Cove

1400 North Gilbert Road | Gilbert, AZ

Office/Medical Suites For Lease



**Suite H**  
±2,738 SF



**Tyson Breinholt**

D: 480.966.7513

M: 602.315.7131

tbreinholt@cpiaz.com

**Cliff Jenkins**

D 480.634.2332

M 480.888.6017

cjenkins@cpiaz.com



**COMMERCIAL PROPERTIES INC.**

Locally Owned. Globally Connected. CORFAC INTERNATIONAL

TEMPE: 2323 W. University Drive, Tempe, AZ 85281 | 480.966.2301  
SCOTTSDALE: 8777 N. Gainey Center Dr., Suite 245, Scottsdale, AZ 85258 | www.cpiaz.com

The information contained herein has been obtained from various sources. We have no reason to doubt its accuracy; however, J & J Commercial Properties, Inc. has not verified such information and makes no guarantee, warranty or representation about such information. The prospective buyer or lessee should independently verify all dimensions, specifications, floor plans, and all information prior to the lease or purchase of the property. All offerings are subject to prior sale, lease, or withdrawal from the market without prior notice. Effective 12/03/24

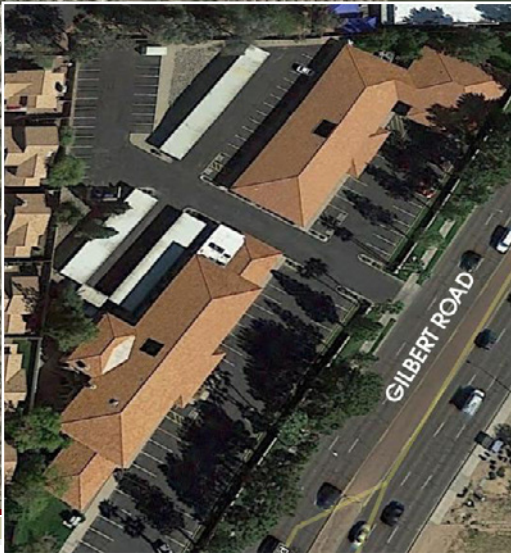
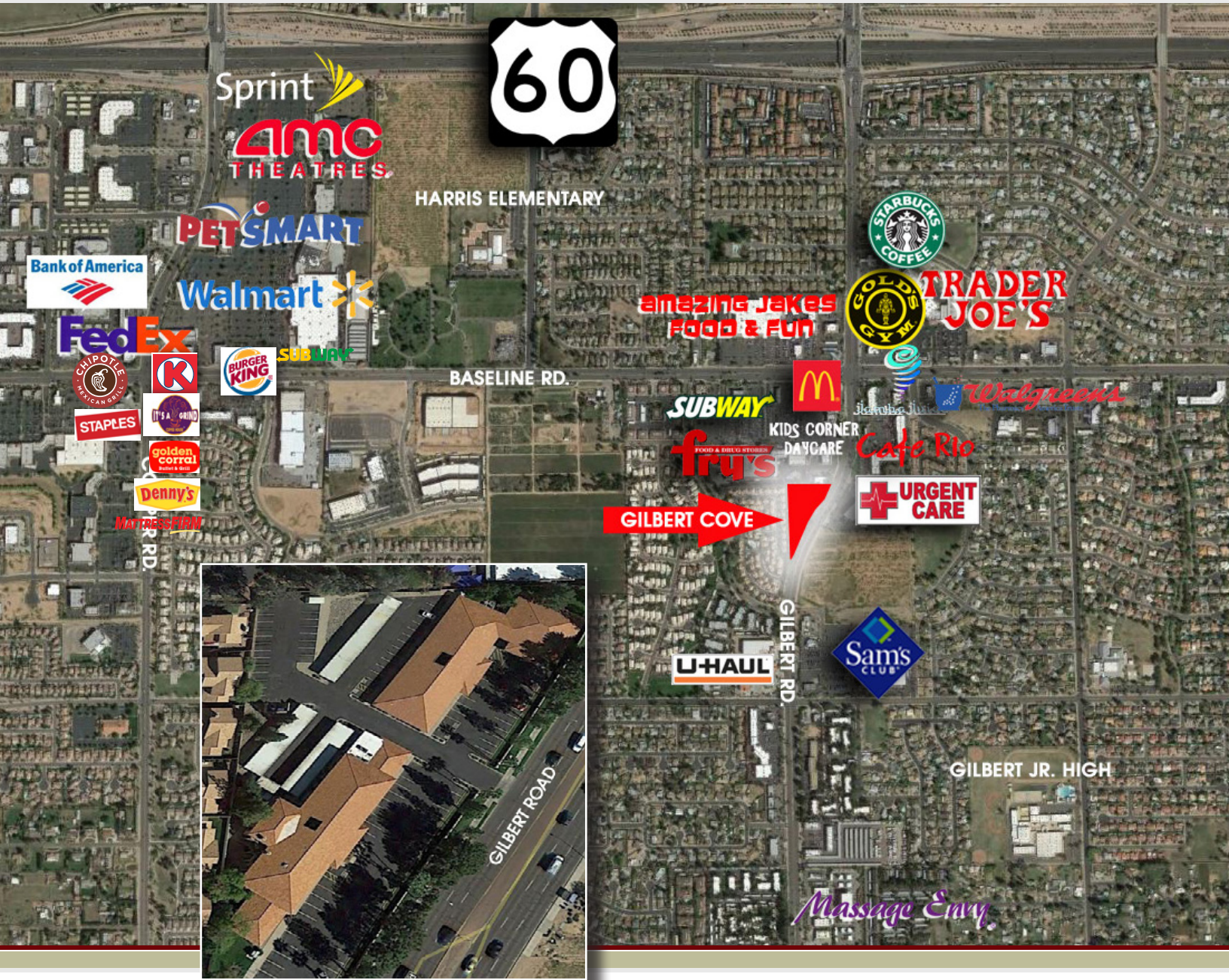


# Gilbert Cove

1400 North Gilbert Road | Gilbert, AZ

Office/Medical Suite For Lease

Area Map



**Tyson Breinholt**

D: 480.966.7513

M: 602.315.7131

tbreinholt@cpi.az.com

**Cliff Jenkins**

D 480.634.2332

M 480.888.6017

cjenkins@cpi.az.com



**COMMERCIAL PROPERTIES INC.**

Locally Owned. Globally Connected. CORFAC INTERNATIONAL

TEMPE: 2323 W. University Drive, Tempe, AZ 85281 | 480.966.2301  
SCOTTSDALE: 8777 N. Gainey Center Dr., Suite 245, Scottsdale, AZ 85258 | www.cpi.az.com

The information contained herein has been obtained from various sources. We have no reason to doubt its accuracy; however, J & J Commercial Properties, Inc. has not verified such information and makes no guarantee, warranty or representation about such information. The prospective buyer or lessee should independently verify all dimensions, specifications, floor plans, and all information prior to the lease or purchase of the property. All offerings are subject to prior sale, lease, or withdrawal from the market without prior notice. Effective 12/03/24