



THE HARVEY

CONDOMINIUMS

A 12-UNIT BOUTIQUE MULTI-FAMILY DEVELOPMENT

2689 S 500 E | SALT LAKE CITY, UT



WELCOME TO THE HARVEY IN SUGAR HOUSE

The Harvey presents a rare opportunity to acquire a newly built, Class A 12-unit multi-family asset in the thriving Sugar House submarket of Salt Lake City. This project combines a prime location, a diverse unit mix, and strong income potential.

CHRISTIE'S
INTERNATIONAL REAL ESTATE

DEVELOPMENT OVERVIEW

- Unit Count: 12
- Gross Scheduled Income: \$424,800
- Cap Rate: TBD

UNIT MIX

- Five Brownstone Residences – 3 bed / 3.5 bath homes, ADU-Ready
- Four Penthouse Condominiums – 1–2 bedroom layouts with open designs and premium finishes
- Three Garden-Style Flats – 2 bed / 2.5 bath residences designed for modern living
- Twelve Covered Parking Spaces

HIGHLIGHTS

- Rare boutique multi-family scale in Sugarhouse
- Enduring rental demand in one of Salt Lake City's fastest growing areas
- Upside potential via ADU integration and tenant diversity
- Walkable to Sugarhouse Park, dining, retail, and transit

12

Total Units

12

Covered Parking

15,062

Square Feet

HARVEYSALTLAKE.COM



UNIT A
Basement Level



UNIT A
Main Level



UNIT A
Upper Level



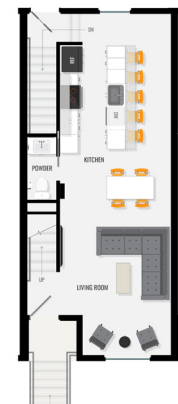
UNIT 201 2 Bd / 1 Ba



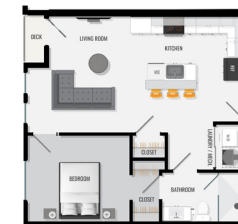
UNIT 202 1 Bd / 1 Ba



UNIT B
Basement Level



UNIT B
Main Level



UNIT 203 1 Bd / 1 Ba



UNIT 204 2 Bd / 1 Ba



THE HARVEY

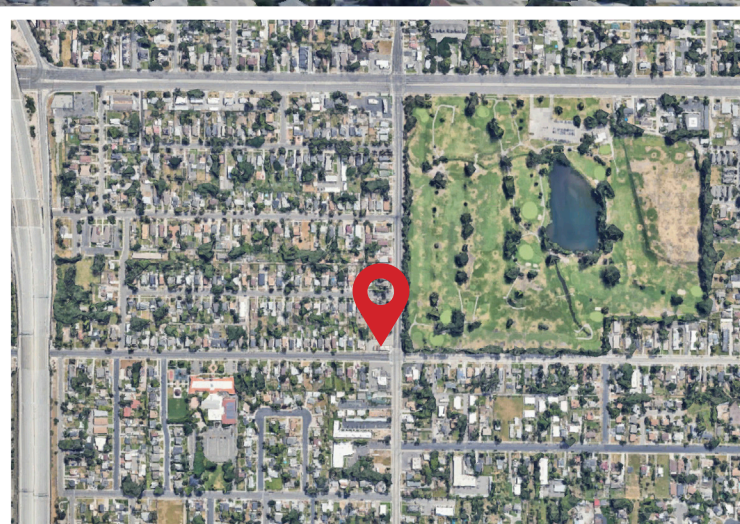
CONDOMINIUMS

SUGAR HOUSE: A HIGH-PERFORMING URBAN SUBMARKET

Sugar House, one of Salt Lake City's most vibrant and sought-after neighborhoods, blends historic charm with modern urban energy. Known for its walkable streets, eclectic mix of local restaurants, boutiques, and breweries, and proximity to Sugar House Park and the S-Line streetcar, it offers a lifestyle that attracts young professionals, families, and long-time residents alike. Once a quiet residential enclave, the area has experienced significant revitalization and smart infill development, with new mixed-use and multi-family projects complementing its classic architecture. Strong demand, limited land availability, and continued infrastructure investment have driven steady appreciation and positioned Sugar House as a premier location for boutique residential and condo developments that deliver design, convenience, and community.



SUGAR HOUSE LOCATION & PROXIMITY



DISCOVER SUGAR HOUSE

Salt Lake City's vibrant, walkable neighborhood where history meets modern living. Whether you're drawn to its eclectic boutiques, diverse dining options, or the expansive green spaces like Sugar House Park, this area offers a unique blend of urban convenience and community warmth.



EXPECTED COMPLETION

The Harvey Condominiums, located at 501 E 2700 S in Salt Lake City, are currently under construction, with an expected completion date in early 2026.

With the exterior almost complete and finishes going in, construction is progressing steadily. The Harvey is poised to become a distinctive addition to the Sugar House neighborhood, offering modern living spaces in a vibrant community.

[HARVEYSALT LAKE.COM](https://harveysaltlake.com)



THE HARVEY

CONDOMINIUMS

harveysaltlake.com

Cherie Major

Salt Lake City Real Estate Specialist

801.557.5627

cherie@cheriemajor.com

CHRISTIE'S
INTERNATIONAL REAL ESTATE

©2025 Christie's International Real Estate. All Rights Reserved. This Christie's International Real Estate brokerage is independently owned and operated and fully supports the principles of the Fair Housing Act and is an Equal Opportunity Employer. All renderings and illustrative maps are artist's conceptual renderings only and subject to change without notice. The developer reserves the right to make any modifications and changes as deemed necessary. Property sizes, specifications, and layouts are approximate only and subject to change without notice. Errors and omissions excepted.