



RETAIL SPACE

MERRICK, NY

28-36 MERRICK AVE

SIZE

30A Merrick Avenue: 1,222 SF + Basement

Second Floor Office:

Suite 7: 650 SF End-Cap Office

Suite 8: 665 SF End-Cap Office

ASKING RENT

Upon Request

CO-TENANTS

Merrick Park Cleaners, Michael's Salon, Khan Orthodontic Group, Poke (Coming Soon), Merrick Avenue Optometry

NEIGHBORS

Chase Bank, Cross Fit, Canco's Tile, Mattress Firm, Kumon, Roslyn Savings Bank, Suki Japanese, Ralph's Italian Ices

Merrick Mall: Stop & Shop, CVS, Outback Steakhouse, The Little Gym, Gino's of Merrick, Island Empanada

COMMENTS

One block from Merrick LIRR Station

Less than 3/4 mile from Grand Avenue Middle School

Average household incomes of \$180,420

End-cap corner office spaces available on second floor

CONTACT EXCLUSIVE AGENTS

JASON SOBEL

jsobel@ripcony.com

516.933.8880

JULIANA CHIARELLI

jchiarelli@ripcony.com

516.933.8880

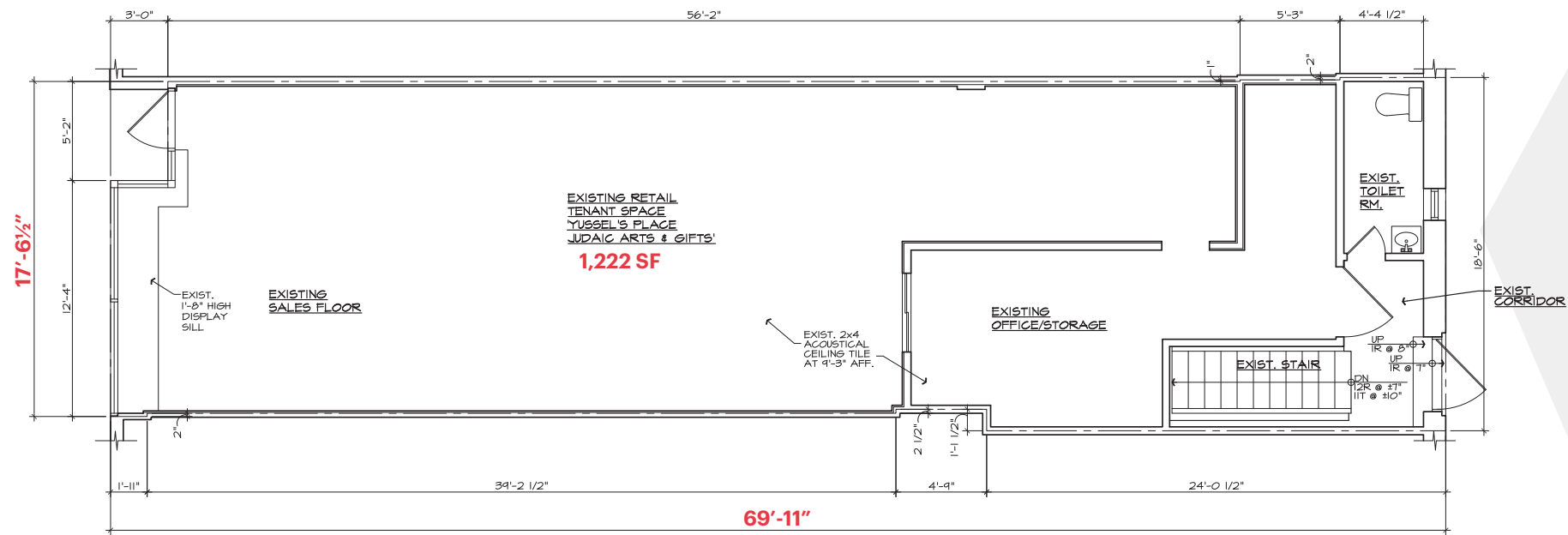
RIPCO
REAL ESTATE

1000 Woodbury Road
Suite 100
Woodbury, NY 11797
516.933.8880

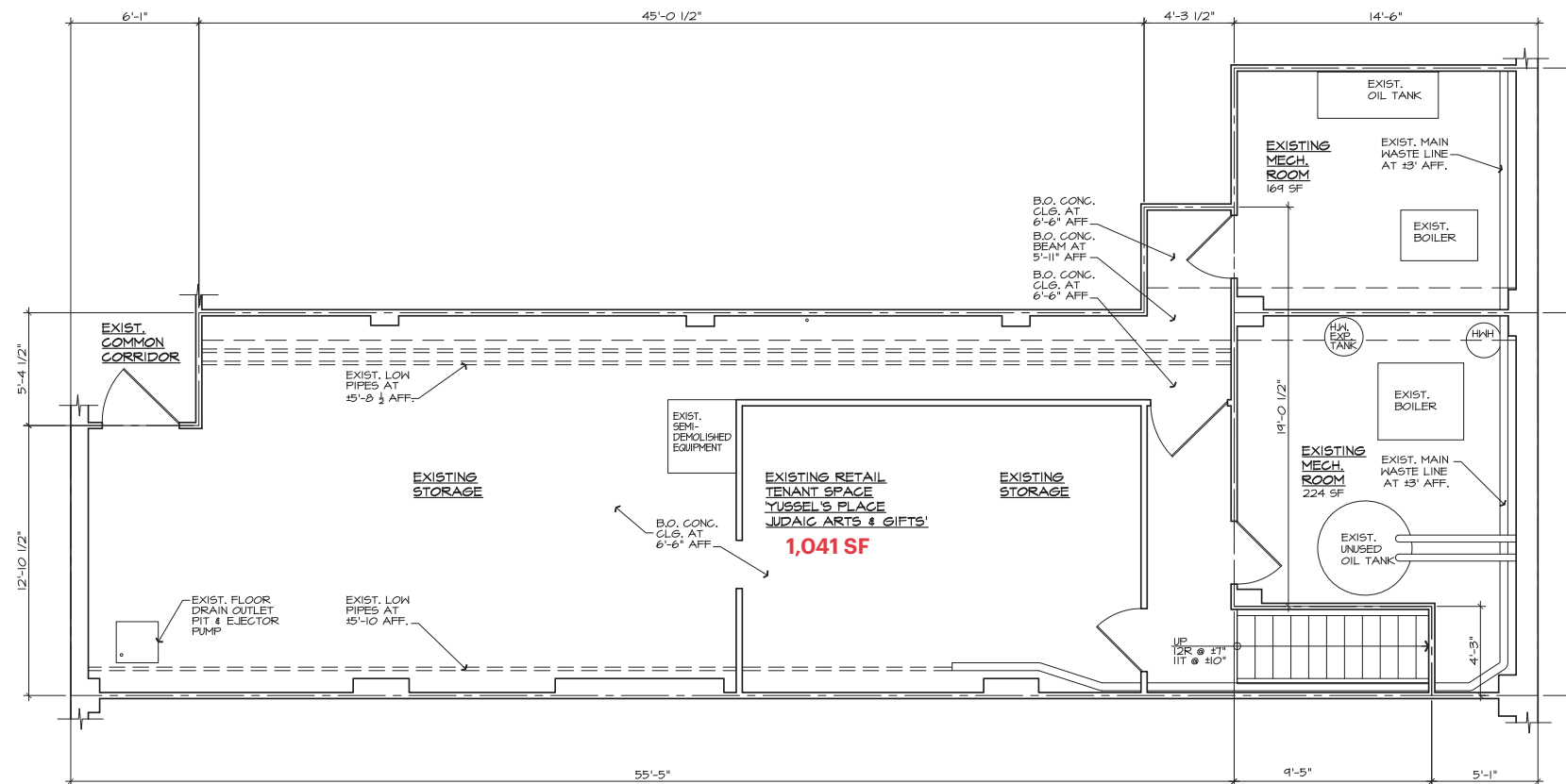
Please visit us at [ripcony.com](https://www.ripcony.com) for more information

This information has been secured from sources we believe to be reliable, but we make no representations as to the accuracy of the information. References to square footage are approximate. Buyer must verify the information and bears all risk for any inaccuracies.

RETAIL FLOOR PLAN - 30A MERRICK AVENUE



RETAIL CELLAR PLAN - 30A MERRICK AVENUE



SECOND FLOOR OFFICE AVAILABILITIES



MARKET AERIAL



AERIAL



28-36 MERRICK AVE

SITE

UNITED STATES
POSTAL SERVICE

CHASE

New York
Community
Bank

OUTBACK
STEAKHOUSE

Carvel

CVS
pharmacy

STOP & SHOP

CrossFit



MTA Long Island Rail Road
MERRICK STATION

DUNKIN'

MATTRESS FIRM

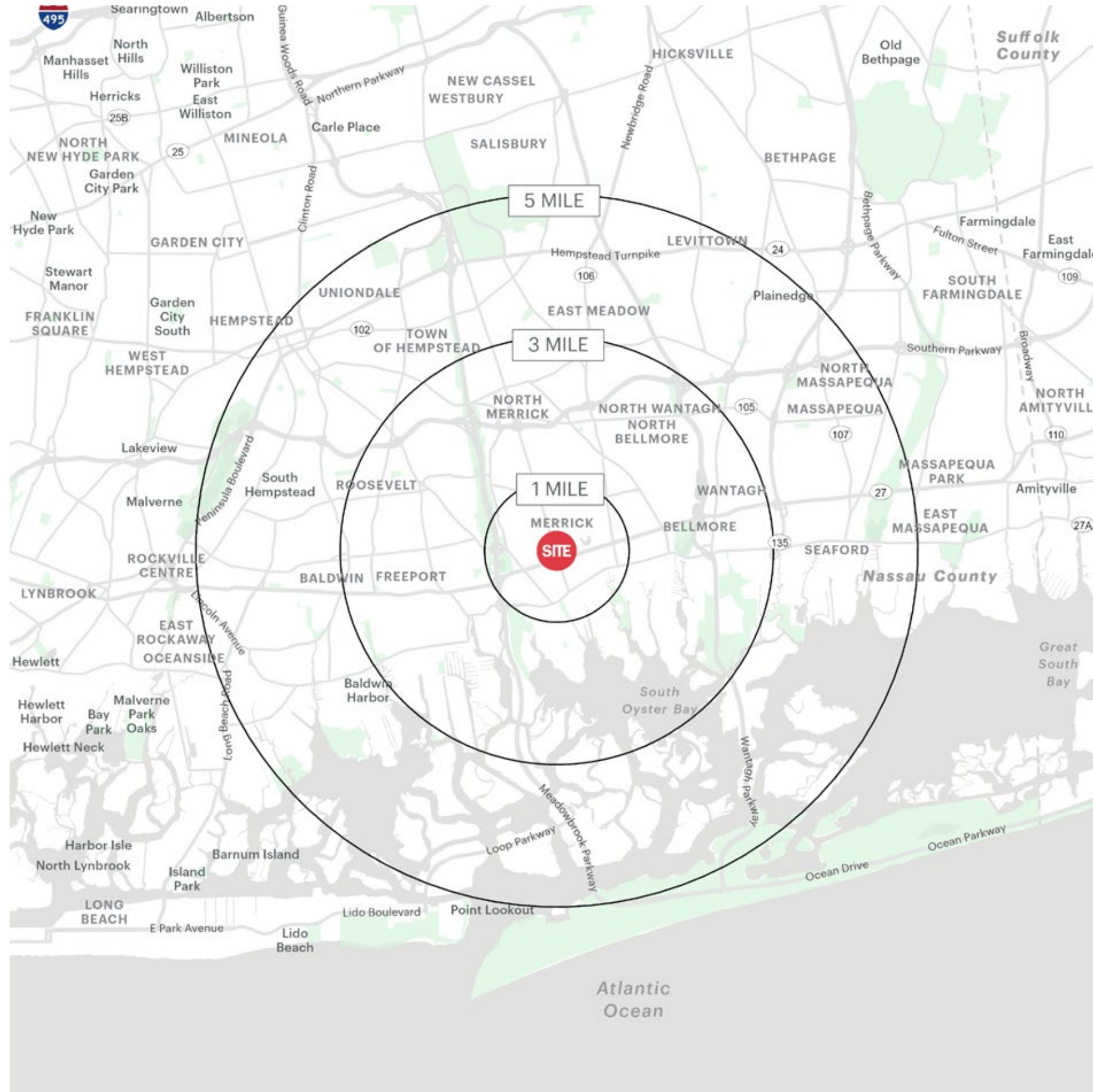
14,621
VPD

55,467
VPD

27

27

AREA DEMOGRAPHICS



28-36 MERRICK AVENUE MERRICK, NY

1 MILE RADIUS

POPULATION
19,520
HOUSEHOLDS
6,701
AVERAGE HOUSEHOLD INCOME
\$180,420
MEDIAN HOUSEHOLD INCOME
\$153,050

COLLEGE GRADUATES (BACHELOR'S +)
7,881 - 56%
TOTAL BUSINESSES
952
TOTAL EMPLOYEES
9,563
DAYTIME POPULATION (W/ 16 YR +)
18,789

3 MILE RADIUS

POPULATION
173,783
HOUSEHOLDS
55,077
AVERAGE HOUSEHOLD INCOME
\$151,325
MEDIAN HOUSEHOLD INCOME
\$121,515

COLLEGE GRADUATES (BACHELOR'S +)
54,263 - 44%
TOTAL BUSINESSES
5,560
TOTAL EMPLOYEES
63,878
DAYTIME POPULATION (W/ 16 YR +)
149,767

5 MILE RADIUS

POPULATION
423,063
HOUSEHOLDS
133,481
AVERAGE HOUSEHOLD INCOME
\$146,121
MEDIAN HOUSEHOLD INCOME
\$115,050

COLLEGE GRADUATES (BACHELOR'S +)
124,544 - 42%
TOTAL BUSINESSES
13,128
TOTAL EMPLOYEES
159,464
DAYTIME POPULATION (W/ 16 YR +)
367,252

AREA DEMOGRAPHICS

