



FOR SALE

5500 WEST BROADWAY AVE
CRYSTAL, MN 55428

Results
COMMERCIAL
RE/MAX RESULTS

TABLE OF CONTENTS

5500 W BROADWAY AVE
CRYSTAL, MN 55428

Confidentiality & Disclaimer

All materials and information received or derived from RE/MAX Results Commercial its directors, officers, agents, advisors, affiliates and/or any third party sources are provided without representation or warranty as to completeness, veracity, or accuracy, condition of the property, compliance or lack of compliance with applicable governmental requirements, developability or suitability, financial performance of the property, projected financial performance of the property for any party's intended use or any and all other matters.

Neither RE/MAX Results Commercial its directors, officers, agents, advisors, or affiliates makes any representation or warranty, express or implied, as to accuracy or completeness of the any materials or information provided, derived, or received. Materials and information from any source, whether written or verbal, that may be furnished for review are not a substitute for a party's active conduct of its own due diligence to determine these and other matters of significance to such party. RE/MAX Results Commercial will not investigate or verify any such matters or conduct due diligence for a party unless otherwise agreed in writing.

EACH PARTY SHALL CONDUCT ITS OWN INDEPENDENT INVESTIGATION AND DUE DILIGENCE.

Any party contemplating or under contract or in escrow for a transaction is urged to verify all information and to conduct their own inspections and investigations including through appropriate third party independent professionals selected by such party. All financial data should be verified by the party including by obtaining and reading applicable documents and reports and consulting appropriate independent professionals. RE/MAX Results Commercial makes no warranties and/or representations regarding the veracity, completeness, or relevance of any financial data or assumptions. RE/MAX Results Commercial does not serve as a financial advisor to any party regarding any proposed transaction. All data and assumptions regarding financial performance, including that used for financial modeling purposes, may differ from actual data or performance. Any estimates of market rents and/or projected rents that may be provided to a party do not necessarily mean that rents can be established at or increased to that level. Parties must evaluate any applicable contractual and governmental limitations as well as market conditions, vacancy factors and other issues in order to determine rents from or for the property.

Legal questions should be discussed by the party with an attorney. Tax questions should be discussed by the party with a certified public accountant or tax attorney. Title questions should be discussed by the party with a title officer or attorney. Questions regarding the condition of the property and whether the property complies with applicable governmental requirements should be discussed by the party with appropriate engineers, architects, contractors, other consultants and governmental agencies. All properties and services are marketed by RE/MAX Results Commercial in compliance with all applicable fair housing and equal opportunity laws.

Contents

PROPERTY INFORMATION	3
PROPERTY PHOTOS	6
ZONING	11
LOCATION INFORMATION	14
ABOUT THE CITY OF CRYSTAL	18
DEMOGRAPHICS	20

Presented By:

Mark Hulsey | Managing Broker | 651.256.7404 | mark@resultscommercial.com

Sawyer Hulsey | Associate Broker | 651.233.3708 | Sawyer@resultscommercial.com



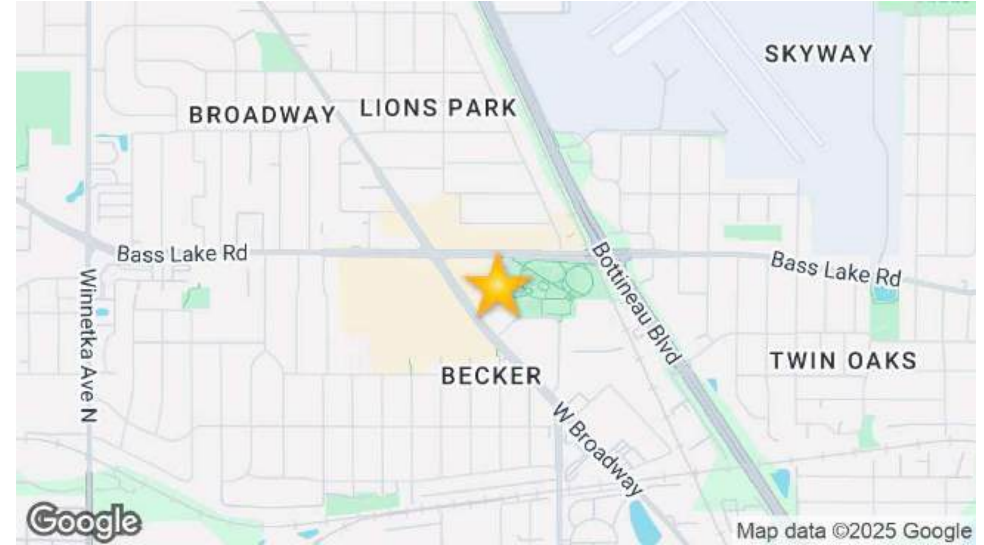


PROPERTY INFORMATION

EXECUTIVE SUMMARY

5500 W BROADWAY AVE
CRYSTAL, MN 55428

SECTION 1 / PAGE 4



OFFERING SUMMARY

Sale Price:	\$1,075,000
Building Size:	6,650 SF
Lot Size:	0.75 Acres
Price / SF:	\$161.65
Year Built:	1981
Zoning:	TC - Town Center Core District
2023 Taxes	\$34,420.24
Traffic Count:	11,236

PROPERTY OVERVIEW

Results Commercial is pleased to present For Sale this 6,650 SF former Goodyear Tire building in Crystal, MN. Located on an excellent, high traffic, high visibility corner of West Broadway Avenue and 55th Avenue North, this building has easy access to highways and is surrounded by many strong retailers. No automotive repair or servicing permitted. Ready for a new owner user or redevelopment with 86 Apartment Units already approved by the city. Currently zoned TC - Town Center Core District.

This former Goodyear Tire shop presents many opportunities for a new user. The building has a large retail storefront, 2 offices, workshop with 6 bays and overhead doors, plus 1 bay and overhead door in the back of the building along with ample room for storage. There are 3 bathrooms with 2 in the retail/office space and 1 in the workshop.

Plenty of parking with 16 spots in the front with additional room for parking in the rear of the building. 5500 W Broadway Avenue is in a designated Opportunity Zone established to incentivize investment into the community and neighborhood. This building is currently vacant and ready for its new phase!

Contact listing brokers today for more information or schedule a tour!

Presented By:

Mark Hulsey | Managing Broker | 651.256.7404 | mark@resultscommercial.com

Sawyer Hulsey | Associate Broker | 651.233.3708 | Sawyer@resultscommercial.com



PROPERTY DETAILS

5500 W BROADWAY AVE
CRYSTAL, MN 55428

SALE PRICE **\$1,075,000**

LOCATION INFORMATION

Street Address	5500 W Broadway Ave
City, State, Zip	Crystal, MN 55428
County/Township	Hennepin/118
Range	21
Section	05
Signal Intersection	Yes

BUILDING INFORMATION

Building Size	6,650 SF
Occupancy %	0%
Tenancy	Single
Number Of Floors	1
Year Built	1981
Gross Leasable Area	6,650 SF
Construction Status	Existing
Free Standing	Yes

PROPERTY DETAILS

Property Type	Retail
Zoning	TC - Town Center Core District
Lot Size	0.75 Acres
APN#	0511821440047
Lot Frontage	240
Lot Depth	250
Corner Property	Yes
Traffic Count	11,236
Traffic Count Street	W Broadway Ave
2023 Taxes	\$34,420.24

PARKING & TRANSPORTATION

Parking Type	Surface
Number Of Spaces	16
Parking Description	Parking lot with 16 spaces & 1 handicap space

Presented By:

Mark Hulsey | Managing Broker | 651.256.7404 | mark@resultscommercial.com
Sawyer Hulsey | Associate Broker | 651.233.3708 | Sawyer@resultscommercial.com





PROPERTY PHOTOS

ADDITIONAL PHOTOS

5500 W BROADWAY AVE
CRYSTAL, MN 55428

SECTION 2 / PAGE 7



Presented By:

Mark Hulsey | Managing Broker | 651.256.7404 | mark@resultscommercial.com

Sawyer Hulsey | Associate Broker | 651.233.3708 | Sawyer@resultscommercial.com

Results
COMMERCIAL
RE/MAX RESULTS

ADDITIONAL PHOTOS

5500 W BROADWAY AVE
CRYSTAL, MN 55428

SECTION 2 / PAGE 8



Presented By:

Mark Hulsey | Managing Broker | 651.256.7404 | mark@resultscommercial.com

Sawyer Hulsey | Associate Broker | 651.233.3708 | Sawyer@resultscommercial.com

ADDITIONAL PHOTOS

5500 W BROADWAY AVE
CRYSTAL, MN 55428

SECTION 2 / PAGE 9



Presented By:

Mark Hulsey | Managing Broker | 651.256.7404 | mark@resultscommercial.com

Sawyer Hulsey | Associate Broker | 651.233.3708 | Sawyer@resultscommercial.com

Results
COMMERCIAL
RE/MAX RESULTS

ADDITIONAL PHOTOS

5500 W BROADWAY AVE
CRYSTAL, MN 55428

SECTION 2 / PAGE 10



Presented By:

Mark Hulsey | Managing Broker | 651.256.7404 | mark@resultscommercial.com

Sawyer Hulsey | Associate Broker | 651.233.3708 | Sawyer@resultscommercial.com



BRENTWOOD AVE

BASS LAKE RD (CO RD 10)

56TH AVE

(BASS LAKE)

BECKER

LAKELAND

ZANE PL

SHERBURNE AVE N

DOUGLAS DR

BOTTINEAU BLVD - CO RD 81

AVE

55TH

WEST BROADWAY

54TH AVE

ZONING

53RD AVE

HANSON CT

HANSON CT

IDAHO AVE

CHAMPSHIRE AVE

GEORGIA AVE

FLORIDA AVE

EDGEWOOD AVE

ZANE A

WIL SH

CITY OF CRYSTAL ZONING MAP

5500 W BROADWAY AVE
CRYSTAL, MN 55428

SECTION 3 / PAGE 12



CITY of CRYSTAL

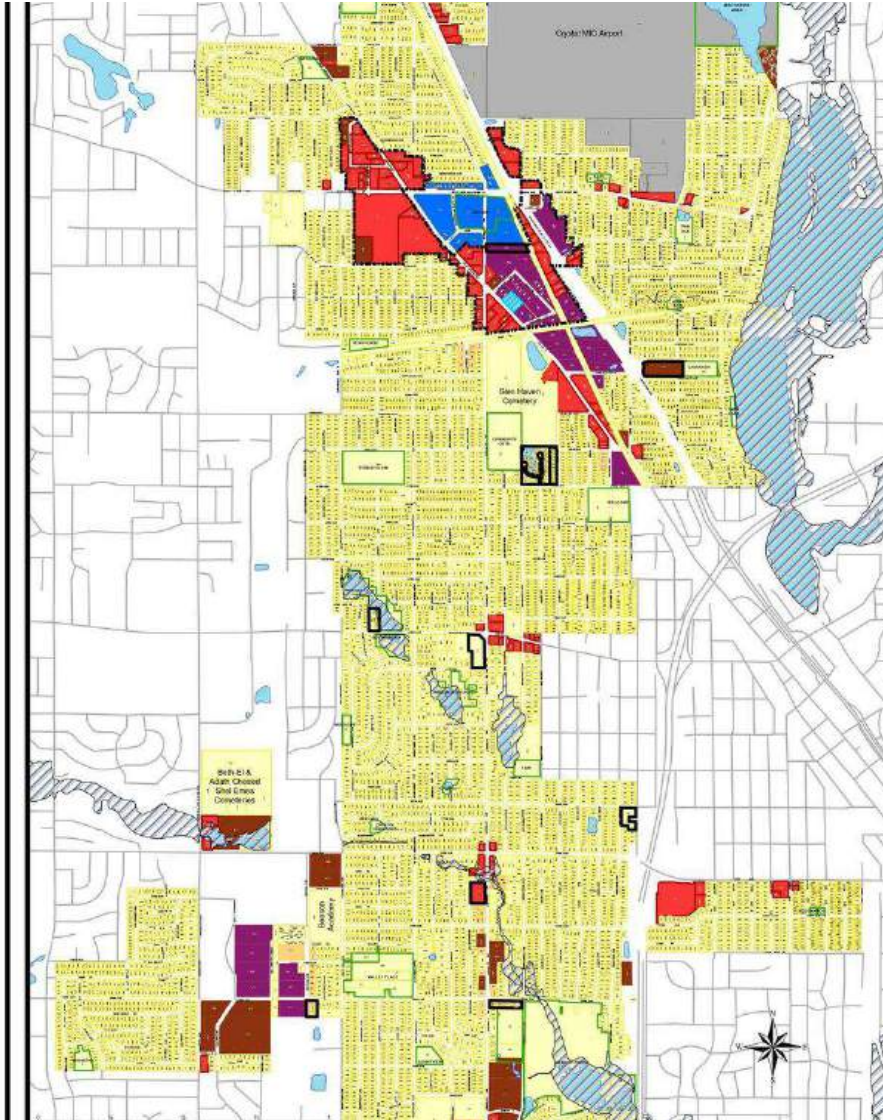
Official Zoning Map

BASE ZONING DISTRICTS:

- R1 - LOW DENSITY RESIDENTIAL
- R2 - MEDIUM DENSITY RESIDENTIAL
- R3 - HIGH DENSITY RESIDENTIAL
- C - COMMERCIAL
- TC - TOWN CENTER
- I - INDUSTRIAL
- AP - AIRPORT DISTRICT

OVERLAY DISTRICTS:

- Planned Development Districts (PD)
- Town Center Planned Development (TC-PD)
- Properties Rezoned to TC-PD
- Floodplain Overlay District
- City Park Land
- Water Bodies



Approved Amendments: Official Zoning Map		
Ordinance No.	Adopted by City Council	Comments
2019-01	April 2, 2019	Re-Zoned to PD (3733 Vera Cruz Ave N)
2019-04	September 3, 2019	Creation of TC and TC-PD Districts
2020-01	February 4, 2020	Re-Zoned to PD (3501 Douglas Dr N)
2020-05	November 17, 2020	Re-Zoned to PD (4141 Douglas Dr N)
2022-02	June 7, 2022	Re-Zoned to R1 (4824 56th Ave N)
2022-05	September 6, 2022	Re-Zoned to TC-PD (5240 West Broadway Ave)

Disclaimer:
The Official Zoning Map is subject to change by action of the Crystal City Council. Any disagreement(s) or inconsistencies between this map and an ordinance adopted by the city council, the ordinance shall prevail.

Official Zoning District Map, Crystal, Minnesota
We the undersigned certify that this is the Official Zoning Map, adopted by Crystal City Council on January 2nd, 2018

01-02-18
Date
Jim Adams, Mayor

01-02-18
Date
Chrissy Serres, City Clerk

Presented By:

Mark Hulsey | Managing Broker | 651.256.7404 | mark@resultscommercial.com

Sawyer Hulsey | Associate Broker | 651.233.3708 | Sawyer@resultscommercial.com



ZONING - TOWN CENTER CORE DISTRICT

5500 W BROADWAY AVE
CRYSTAL, MN 55428

SECTION 3 / PAGE 13



TOWN CENTER CORE DISTRICT PERMITTED USES

- Dwellings, Multi-Family
- Animal Hospital/Veterinary Clinics
- Banks or Financial Institutions
- Brewer Taprooms, Brewpubs or Microdistillery
- Clubs or Lodges
- Convenience Stores
- Hotel, Motel, Extended Stay Establishments
- Offices, Professional
- Parking Ramps or Structures
- Personal Services
- Restaurants or Eating Establishments
- Retail Establishments
- Theater, Indoor
- Essential Services
- Public Parks and Playgrounds

Presented By:

Mark Hulsey | Managing Broker | 651.256.7404 | mark@resultscommercial.com

Sawyer Hulsey | Associate Broker | 651.233.3708 | Sawyer@resultscommercial.com



LOCATION INFORMATION

RETAILER MAP

5500 W BROADWAY AVE
CRYSTAL, MN 55428



Map data ©2024 Google Imagery ©2024 Airbus, CNES / Airbus, Maxar Technologies, USDA/FPAC/GEO

Presented By:

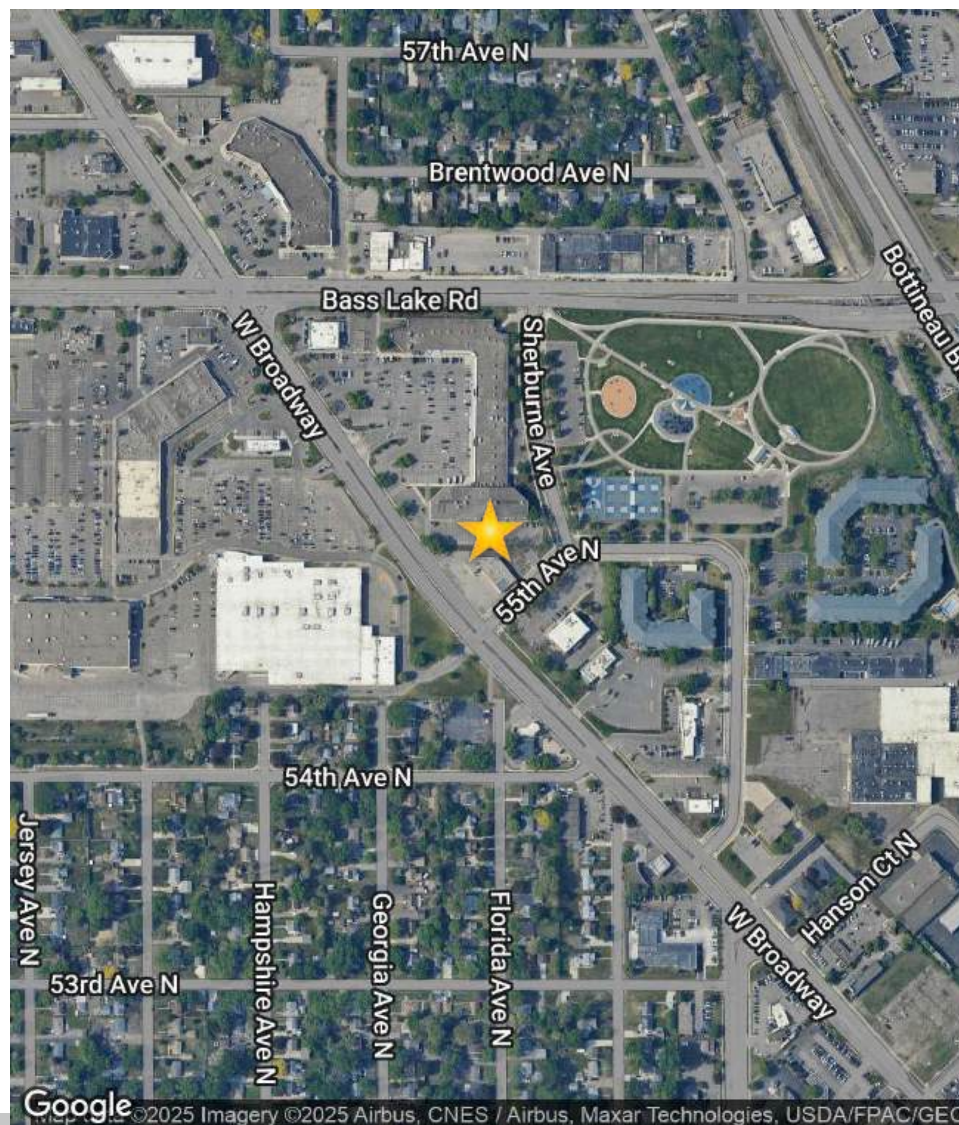
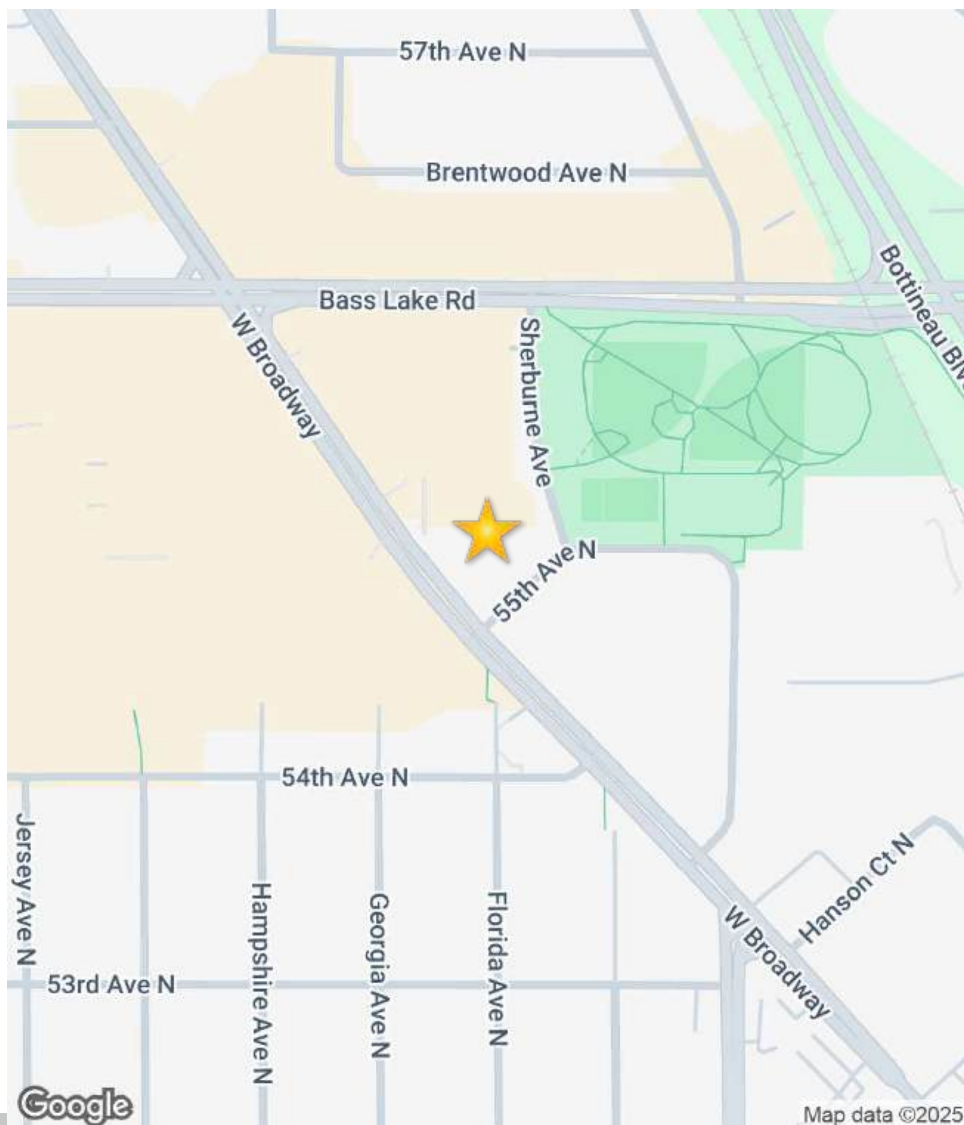
Mark Hulsey | Managing Broker | 651.256.7404 | mark@resultscommercial.com
Sawyer Hulsey | Associate Broker | 651.233.3708 | Sawyer@resultscommercial.com



LOCATION MAP

5500 W BROADWAY AVE
CRYSTAL, MN 55428

SECTION 4 / PAGE 16



Presented By:

Mark Hulsey | Managing Broker | 651.256.7404 | mark@resultscommercial.com

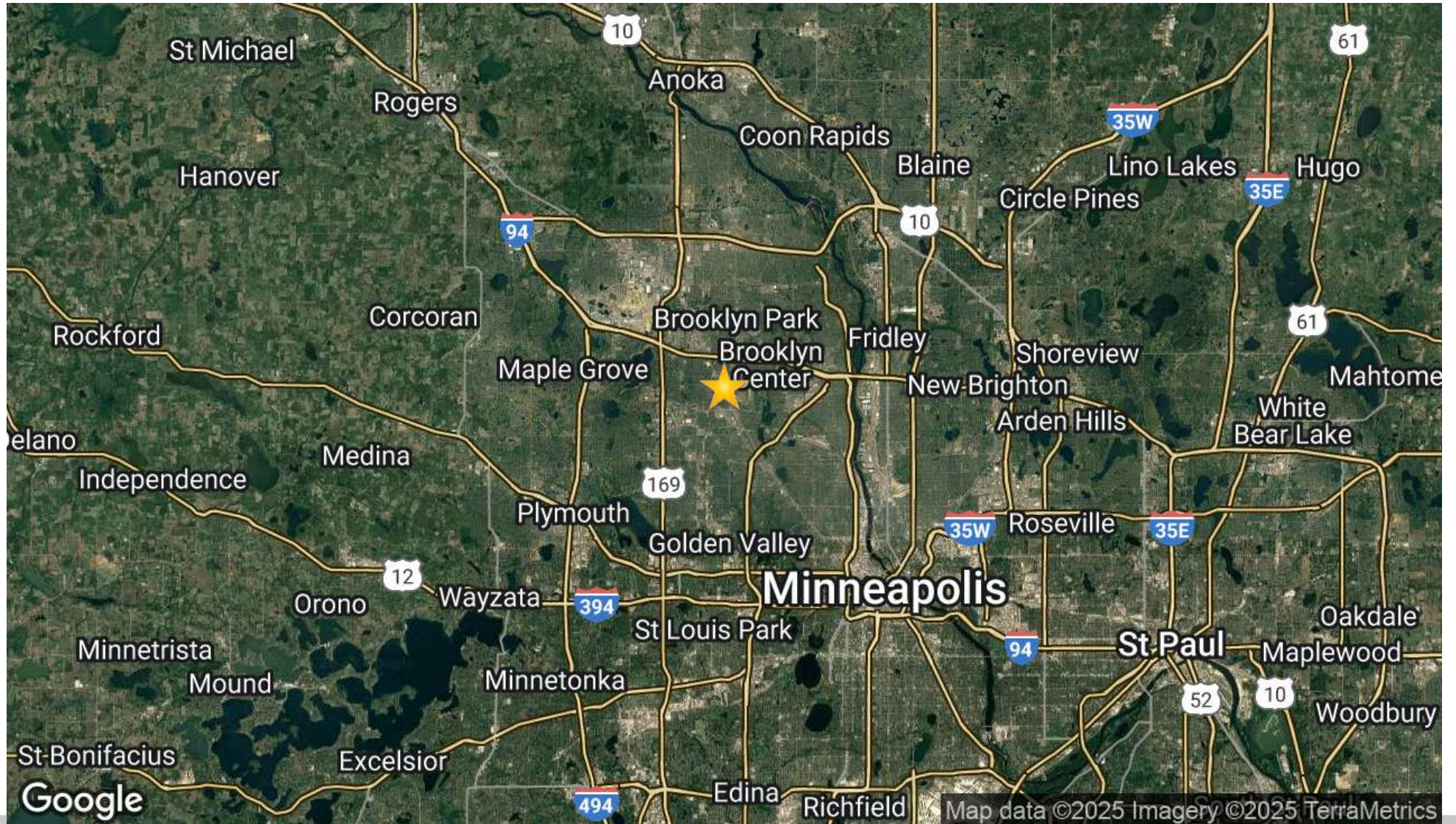
Sawyer Hulsey | Associate Broker | 651.233.3708 | Sawyer@resultscommercial.com



REGIONAL MAP

5500 W BROADWAY AVE
CRYSTAL, MN 55428

SECTION 4 / PAGE 17



Presented By:

Mark Hulsey | Managing Broker | 651.256.7404 | mark@resultscommercial.com

Sawyer Hulsey | Associate Broker | 651.233.3708 | Sawyer@resultscommercial.com





Crystal



MN

ABOUT THE CITY OF CRYSTAL

ABOUT THE CITY OF CRYSTAL

5500 W BROADWAY AVE
CRYSTAL, MN 55428

SECTION 5 / PAGE 19



Crystal is a city in Hennepin County, Minnesota, United States. The population was 22,151 at the 2010 census. Minnesota State Highway 100 and County Road 81 are two of the main routes in the city. Other routes include Douglas Drive North, 36th Avenue North, 42nd Avenue North, and Bass Lake Road. Crystal Airport, a small general aviation field, is located within the city limits.

The city is bordered on the north by the city of Brooklyn Park, on the northeast by Brooklyn Center, on the east by Robbinsdale, on the south by Golden Valley, and on the west by New Hope. The City of Crystal has more than 240 acres dedicated to parks and open space. The city maintains 27 parks as well as numerous ball fields, courts, playgrounds, trails and activity areas. The Crystal Community Center features an outdoor aquatic center, skate park and little league baseball complex.

Crystal has been awarded the "Minnesota Star City" designation for economic development.

FOR MORE INFORMATION: <https://www.crystalmn.gov/>

Presented By:

Mark Hulsey | Managing Broker | 651.256.7404 | mark@resultscommercial.com

Sawyer Hulsey | Associate Broker | 651.233.3708 | Sawyer@resultscommercial.com



The image shows a well-lit interior space with light-colored brick walls and a white tiled floor. On the left, there is a long wooden counter with a dark top and several wooden cabinets underneath. A fire extinguisher is mounted on the wall near a doorway. In the center, a stone pillar supports a wooden countertop. Two octagonal windows are set into the brick wall. To the right, a large glass door provides access to the outside. The ceiling is a drop ceiling with recessed lighting.

DEMOGRAPHICS

DEMOGRAPHICS MAP & REPORT

5500 W BROADWAY AVE
CRYSTAL, MN 55428

SECTION 6 / PAGE 21

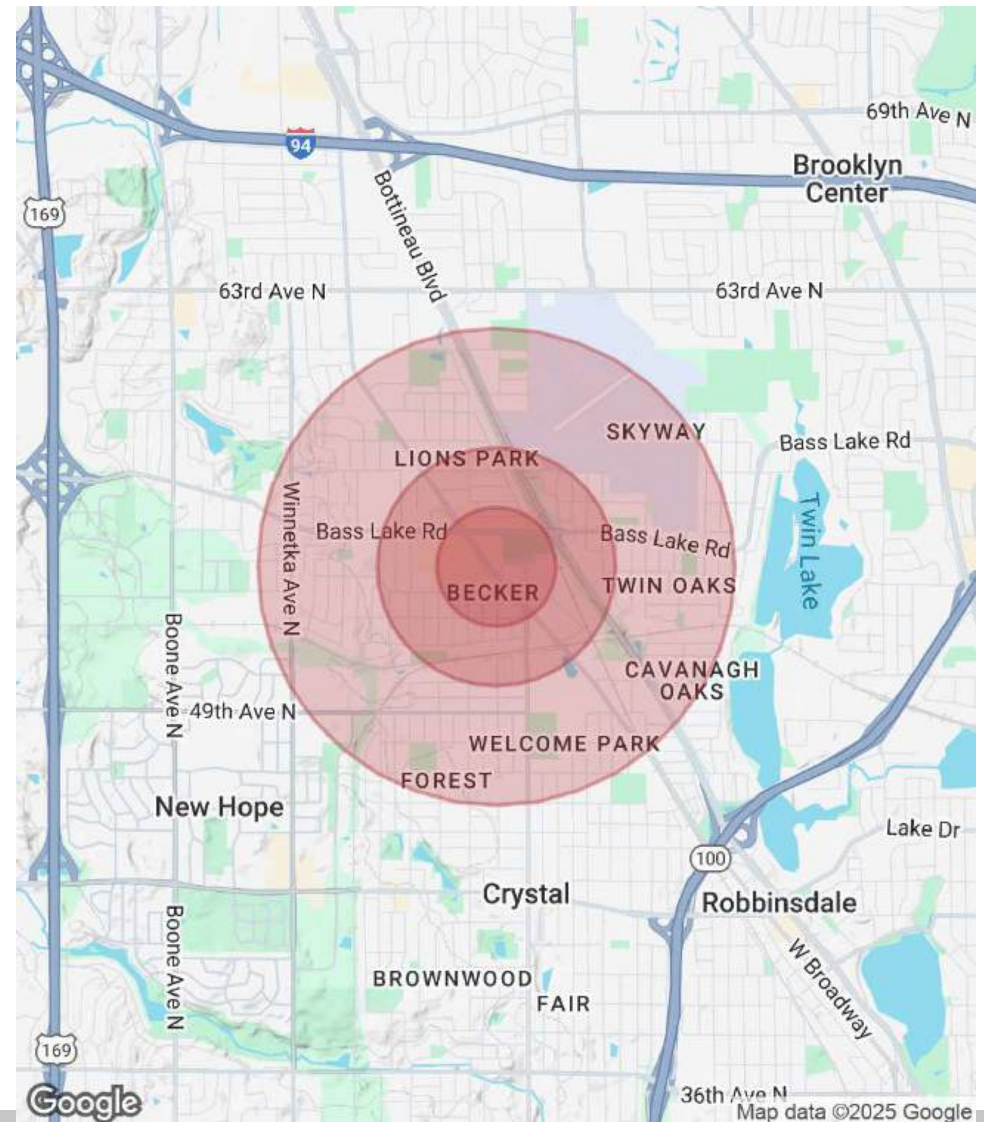
POPULATION

	0.25 MILES	0.5 MILES	1 MILE
Total Population	791	3,016	12,637
Average Age	34.1	34.9	36.7
Average Age (Male)	28.3	31.5	35.0
Average Age (Female)	43.2	39.8	39.0

HOUSEHOLDS & INCOME

	0.25 MILES	0.5 MILES	1 MILE
Total Households	282	1,221	5,171
# of Persons per HH	2.8	2.5	2.4
Average HH Income	\$66,721	\$70,899	\$76,656
Average House Value	\$201,500	\$200,791	\$202,476

2020 American Community Survey (ACS)



Presented By:

Mark Hulsey | Managing Broker | 651.256.7404 | mark@resultscommercial.com

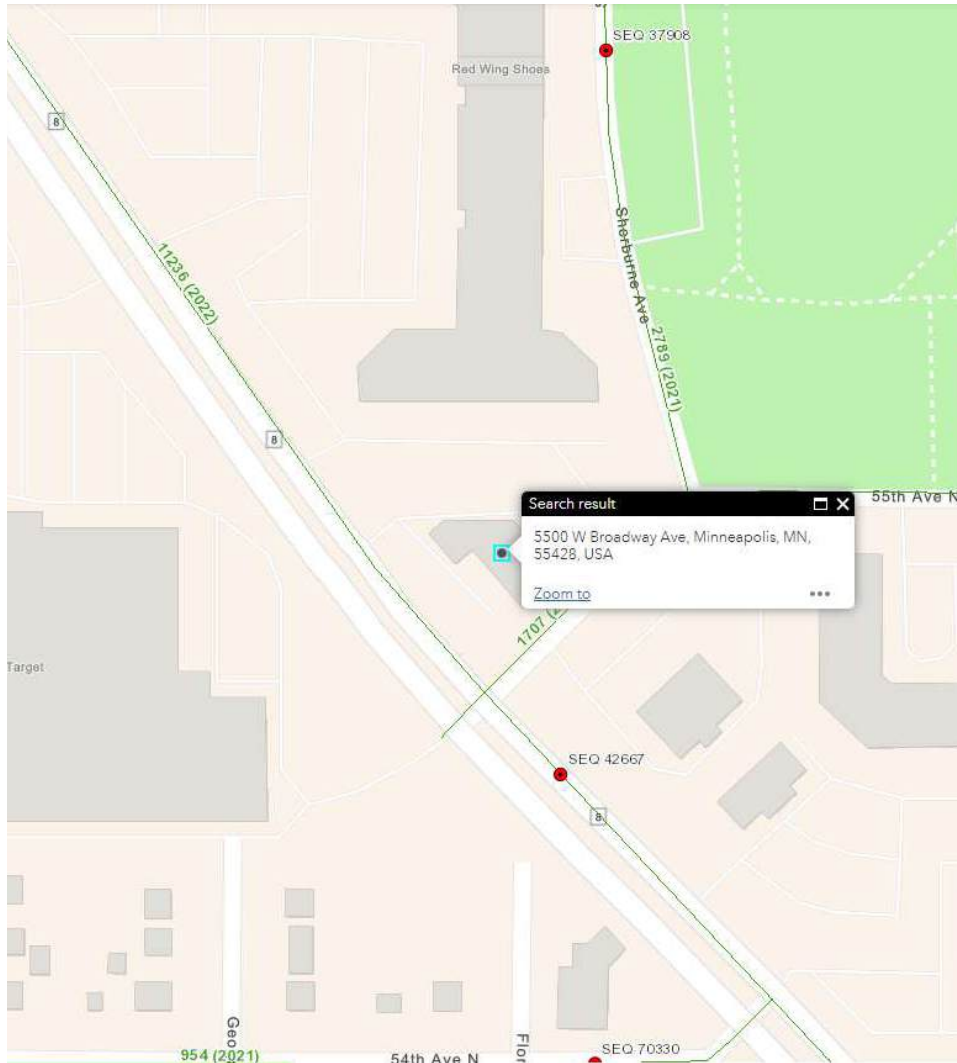
Sawyer Hulsey | Associate Broker | 651.233.3708 | Sawyer@resultscommercial.com



TRAFFIC COUNTS

5500 W BROADWAY AVE
CRYSTAL, MN 55428

SECTION 6 / PAGE 22



TRAFFIC COUNT

W Broadway Ave

11,236 Vehicles Per Day

Sherburne Ave

2,789 Vehicles Per Day

55th Ave N

1,707 Vehicles Per Day

Presented By:

Mark Hulsey | Managing Broker | 651.256.7404 | mark@resultscommercial.com

Sawyer Hulsey | Associate Broker | 651.233.3708 | Sawyer@resultscommercial.com