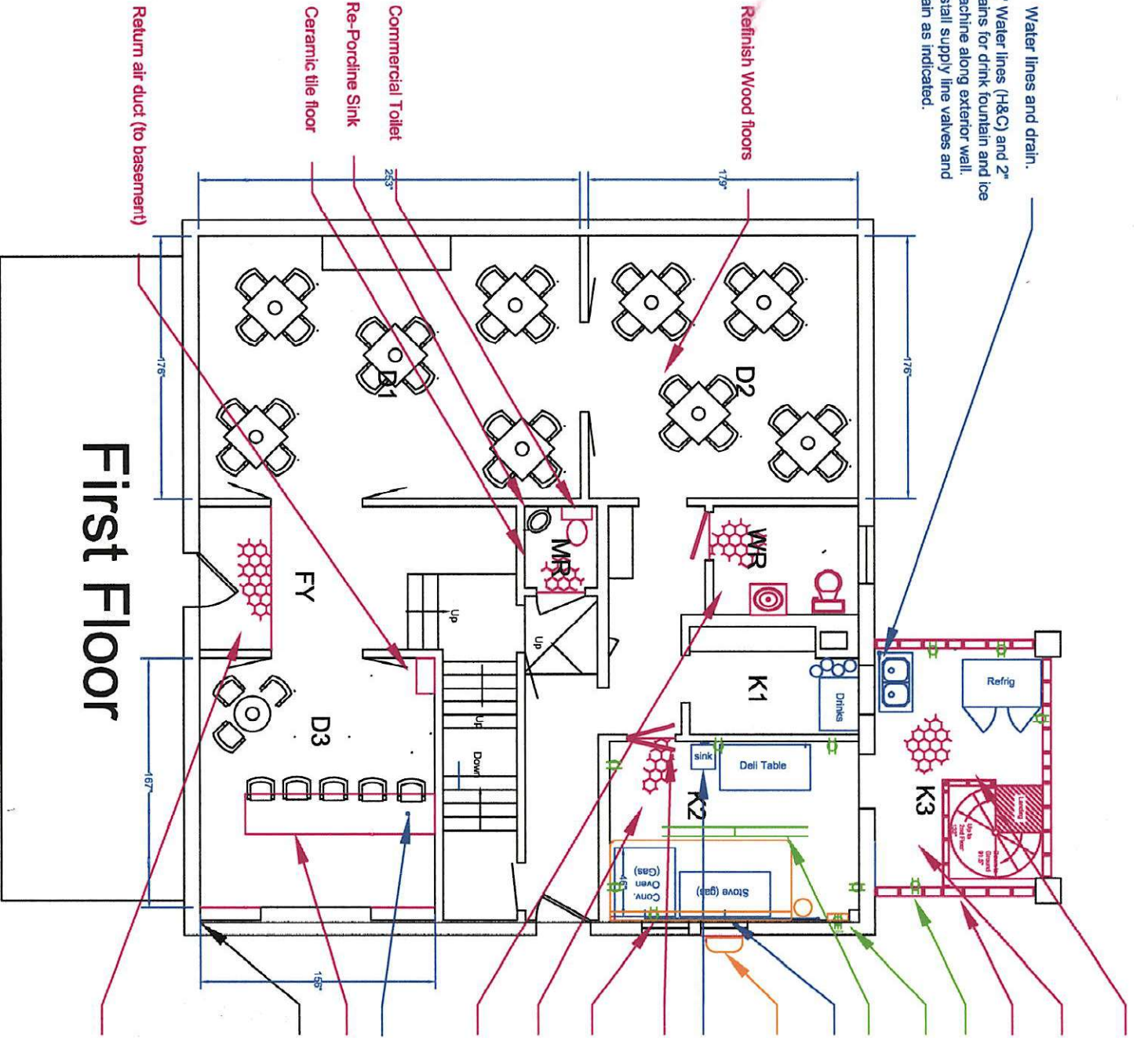


Water lines and drain.
 1/2" Water lines (H&C) and 2" drains for drink fountain and ice machine along exterior wall. Install supply line valves and drain as indicated.



Interior wall surrounding spiral stairs
 2 x 4 construction, OSB exterior

New floor framing and sub-flooring,
 ceramic tile flooring

Insulated 2x6 wall, OSB interior,
 vinyl siding exterior,

In-wall duplex electric outlets - 2 circuits

Service to hood: 1 - 20 amp 110v circuit
 2 - 20 amp 220v circuits.

Dual 8' fluorescent light fixture (enclosed)

3/4" gas supply line along wall to fixtures;
 (Through floor; Connect in basement.

Hood exhaust - Through window opening.

Install hand sink, 2" drain, 1/2" supply lines

Install 2-way swing door (with window)

Remove windows; Steel plate exterior

Ceramic floor

Remodel Women's Restroom,
 Fixtures, stall, ceramic floor,
 privacy glass in window

Supply and drain; 3 bowl bar sink.

Bar, Dark (old) oak

Interior Area = 1390 ft²

Slate foyer

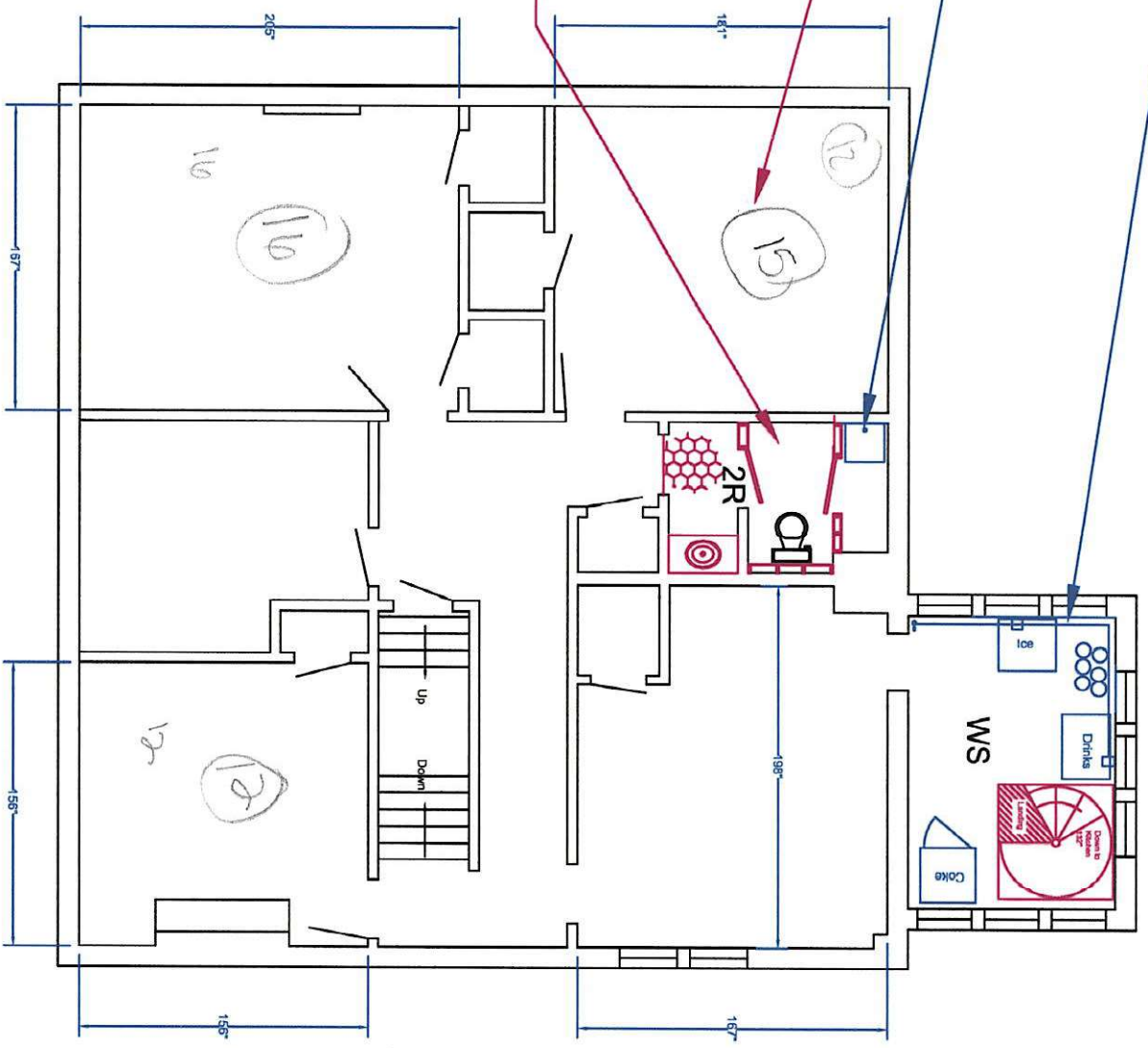
First Floor

Water lines and drain.
1/2" Water lines (H&C) and 2" drains for drink fountain and ice machine along exterior wall. Install supply line valves and drain air gap drains as indicated.

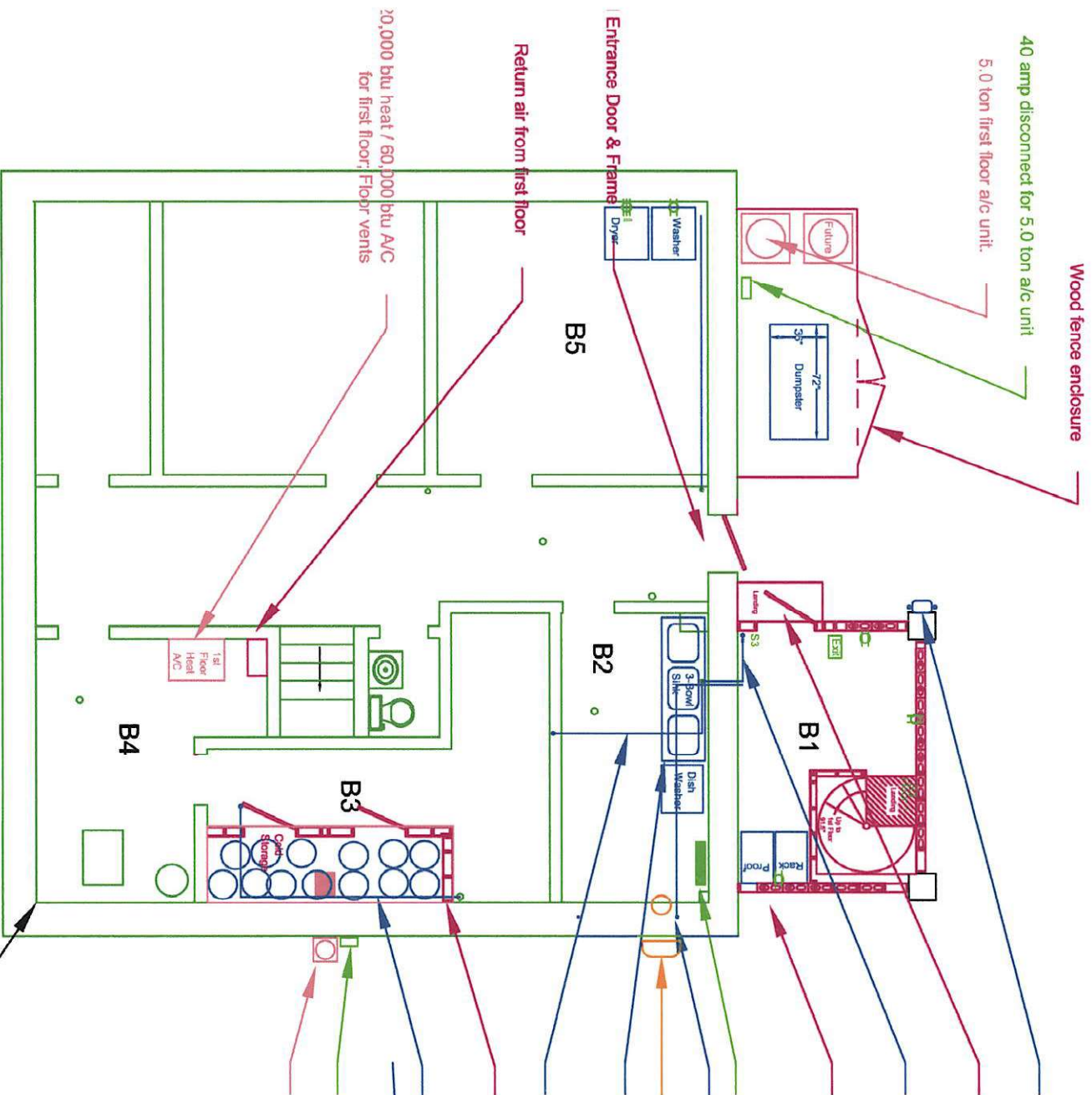
Mop sink (Existing plumbing)

Refinish floors

Remodel restroom, remove tub and wall tile, build false wall behind toilet, install fixtures, mop closet with floor mop sink, privacy glass in window, ceramic tile floor



Second Floor



Wood fence enclosure

40 amp disconnect for 5.0 ton a/c unit

5.0 ton first floor a/c unit.

Relocate gas meter to here

Steel entrance door door (Push-bar open);
Concrete landing.

1/2" hot and cold supply and 2" drain.
Extend to second floor.

Wall-in with 2 block high block foundation,
2 x 6 Insulated wall, OSB interior
vinyl siding exterior, electric outlets
every 6 feet, two circuits

New 200 amp electric service
1-1/4" gas supply line to kitchen

Make-up air for kitchen hood

Existing plumbing for 3-bowl sink.
Install supply valves; Install sink and grease trap
(Grease trap serves F1 & F2).

Water and drain to kitchen hand sink.

Wall-in cold-storage room. Insulated 2" x 6" walls x 60" hi
OSB both sides - Exterior vapor barrier.
Insulated (exterior) door and threshold.

1/2" water and 2" drain to F1 dining room (bar).

30 amp disconnect

2.5 ton cold-storage refrigeration unit.

20,000 btu heat / 60,000 btu A/C
for first floor. Floor vents

Return air from first floor

Entrance Door & Flame
Dryer

Basement Floor

Interior Area = 1280 sq ft