



# 1389 WHEATON

I-75 TECH PARK, TROY, MI



## For Lease

### Property Highlights

- Suite 700: 3,602 SF
- 18' clearance
- Sprinklered
- Overhead door
- Conveniently located off of I-75 at Rochester Road (Exit 67)
- Great I-75 signage exposure

For information, please contact:

#### **GEOFF HILL**

*Executive Managing Director*

t 248-350-1492

geoff.hill@nmrk.com

#### **CHRIS HILL**

*Director*

t 248-350-1192

chris.hill@nmrk.com

27725 Stansbury Blvd, Suite 300  
Farmington Hills, MI 48334

[nmrk.com](http://nmrk.com)

# NEWMARK

The information contained herein has been obtained from sources deemed reliable but has not been verified and no guarantee, warranty or representation, either express or implied, is made with respect to such information. Terms of sale or lease and availability are subject to change or withdrawal without notice.

## Lease

1389 Wheaton Dr Troy, MI 48083-1933



### Pricing Information:

<b>Lease Rate Range:</b>	\$11.50-\$11.50
	MGRS
<b>Lease Type:</b>	MGRS
<b>Sale Price:</b>	N/A
<b>Price per SF:</b>	N/A
<b>Real Estate Taxes psf:</b>	\$0.00
<b>Building Insurance psf:</b>	\$0.00
<b>CAM psf:</b>	N/A

### Property Details:

<b>Total Building Area:</b>	27,184 sf
<b>Min/Max Available:</b>	3,602 sf
<b>Office Area:</b>	
<b>Property Type:</b>	R&D/Flex
<b>Tenancy:</b>	Multi-tenant
<b>Year Built:</b>	01/01/1999
<b>Year Renovated:</b>	
<b>Zoning:</b>	Lt. Ind
<b>Site/Parcel Area:</b>	0.00 acres

<b>Parcel ID:</b>	20-26-176-013
<b>Parking Description:</b>	
<b>Rail Served:</b>	No
<b>Cranes:</b>	No
<b>Heat:</b>	Gas
<b>Clear Height Min/Max:</b>	18.0'
<b>Grade/Dock Doors:</b>	4 / 0
<b>Sprinkler:</b>	Yes
<b>Power:</b>	200 amps, 480 volt

### Comments:

18' clear, 1-12'x14' OH door, Gas unit heat, 200 amps 480 volt 3 phase.

#### Geoffrey Hill

248.350.1492

[Geoff.Hill@nrmk.com](mailto:Geoff.Hill@nrmk.com)

#### Chris Hill

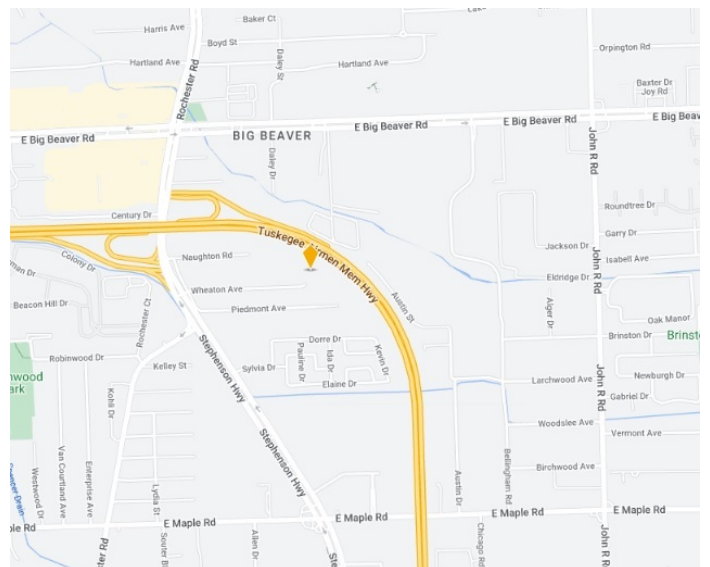
248.350.1192

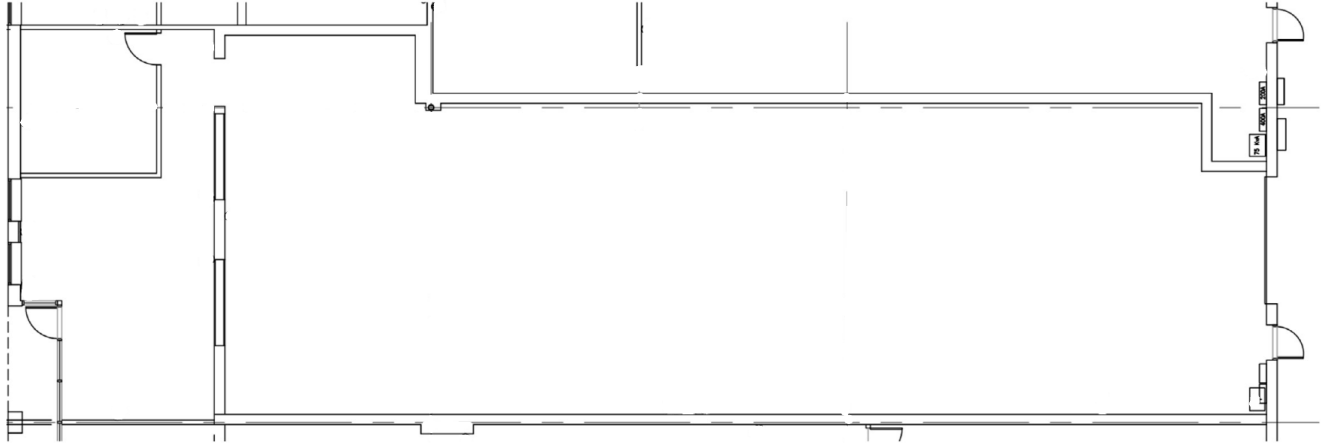
[Chris.Hill@nrmk.com](mailto:Chris.Hill@nrmk.com)

#### Teddy O'Keefe

248.320.5216

[Theodore.Okeefe@nrmk.com](mailto:Theodore.Okeefe@nrmk.com)





## I-75 Tech Park

1389 Wheaton Drive  
Troy, MI 48083

Suite 700  
3,602 RSF

**JFK** INVESTMENT COMPANY, L.L.C.  
A MICHIGAN LIMITED LIABILITY COMPANY  
43252 WOODWARD AVE-SUITE 210-BLOOMFIELD HILLS, MI 48302  
PHONE: (248) 333-2373 - FAX: (248) 333-2873

### CONTACT

#### **GEOFF HILL**

*Executive Managing Director*

t 248-350-1492

geoff.hill@nmrk.com

#### **CHRIS HILL**

*Director*

t 248-350-1192

chris.hill@nmrk.com

#### **Teddy O'Keefe**

*Associate*

t 248-447-2715

teddy.okeefe@nmrk.com

# NEWMARK