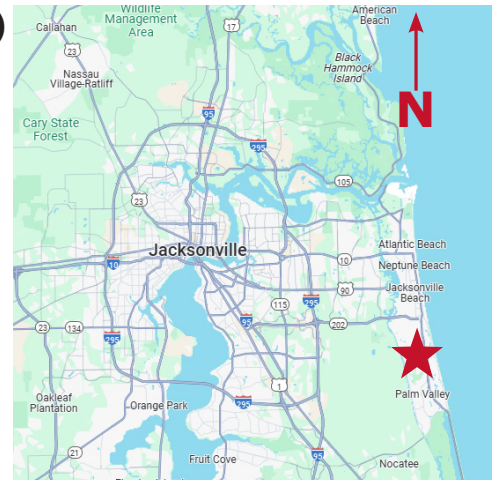


**PONTE VEDRA  
BEACH BUILDING  
FOR LEASE**

**6000C Sawgrass Village Dr., Ponte Vedra Beach, FL 32082**



- **Lease Rate: \$36.00/SF (plus utilities & janitorial)**
- **Building: +/-3,516 SF**
- Available within 90 days' notice
- Rare opportunity to lease a free-standing building
- Floor plan includes: large reception, 12-13 offices, conference room, kitchen, 3 restrooms and back patio
- Ample parking in shared surface lot
- Well-located in Sawgrass Village; convenient to restaurants, shopping, and hotels



<b>2025 Demographics</b>	<b>1 Mile</b>	<b>3 Mile</b>	<b>5 Mile</b>
Estimated Population	7,723	24,631	43,611
Average HH Income	\$176,496	\$226,333	\$219,273
Daytime Total Employees	4,996	13,259	22,471



**STRATEGIC SITES**  
**Clifford Commercial**

For Additional  
Information Contact:

**JC Clifford**  
jcc@strategicsites.com

OR

**Kate Clifford**  
kate@strategicsites.com

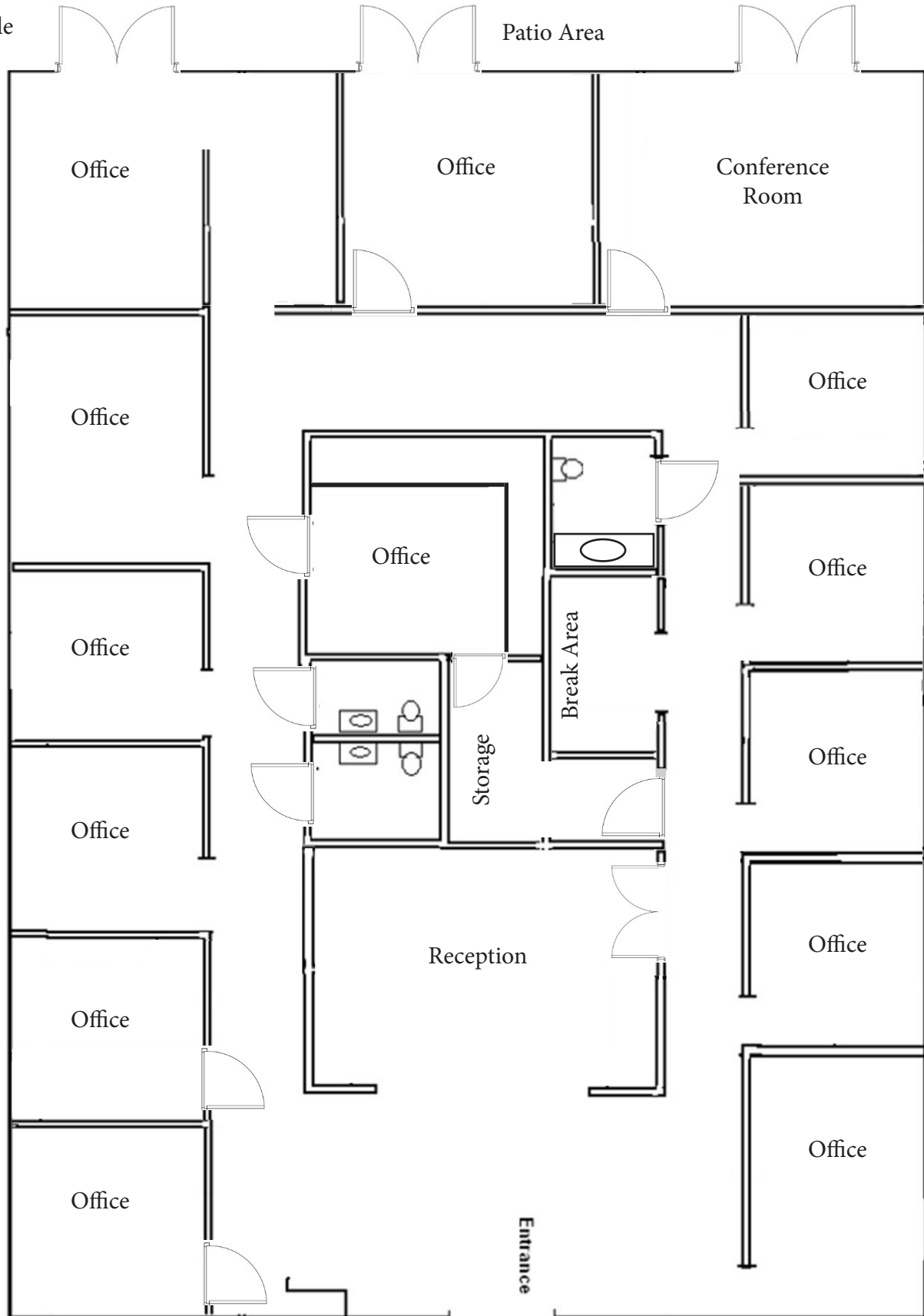
422 Jacksonville Drive, Jacksonville Beach, FL ~ 904-242-2828 ~ [www.strategicsites.com](http://www.strategicsites.com)

**Client First through Service, Knowledge and Integrity**

Notice of Disclaimer: Details contained herein are believed to be correct: the information is subject to errors, omissions, price changes, or withdrawal without notice

# Floor Plan +/-3,516 SF

\*Not to Scale



422 Jacksonville Drive, Jacksonville Beach, FL ~ 904-242-2828 ~ [www.strategicsites.com](http://www.strategicsites.com)

**Client First through Service, Knowledge and Integrity**

Notice of Disclaimer: Details contained herein are believed to be correct: the information is subject to errors, omissions, price changes, or withdrawal without notice

# Aerial



422 Jacksonville Drive, Jacksonville Beach, FL ~ 904-242-2828 ~ [www.strategicsites.com](http://www.strategicsites.com)

**Client First through Service, Knowledge and Integrity**

Notice of Disclaimer: Details contained herein are believed to be correct: the information is subject to errors, omissions, price changes, or withdrawal without notice