



FREESTANDING RETAIL/RESTAURANT SPACE

837 EAST 2100 SOUTH, SALT LAKE CITY, UT

LEASE RATE: \$24.50 PSF NNN

SALE PRICE: ~~\$1,500,000.00~~

REDUCED TO \$1,250,000.00!



PROPERTY INFORMATION

- ☑ Lease rate: \$24.50 PSF NNN
- ☑ Sales Price: \$1,250,000.00
- ☑ Building Size: Approx. 3,046 SF
- ☑ -Main Floor Approx.: 1,773 SF
- ☑ -Second Floor Approx.: 1,273 SF
- ☑ -Approx. 1,400 SF Patio Space Along 2100 S.
- ☑ Zoning: MU-5
- ☑ Land Size: 0.16 Acres
- ☑ Grey Shell Condition
- ☑ Year Built: 1960
- ☑ Walk-In Cooler
- ☑ Walk-In Freezer
- ☑ Full Kitchen
- ☑ Hood In Place
- ☑ 6 Surface Parking Spaces
- ☑ Easy Access To I-15
- ☑ Zero Lot Line (Construction, Building Configuration)

CONTACT US

JUSTIN WELCH

✉ justin@cresutah.com

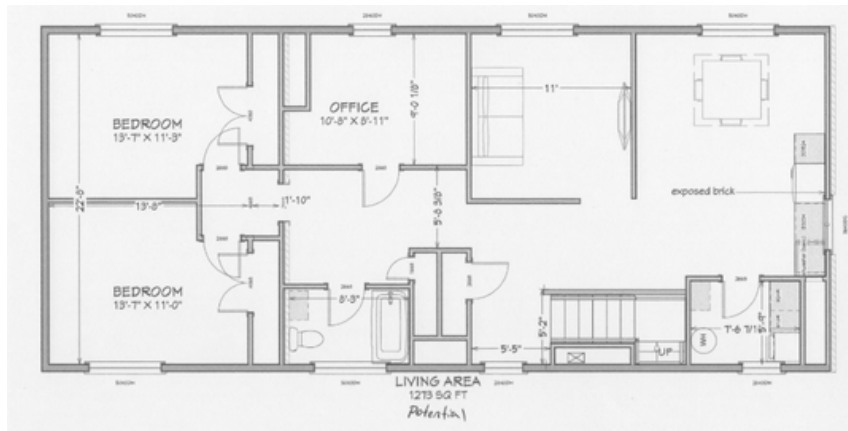
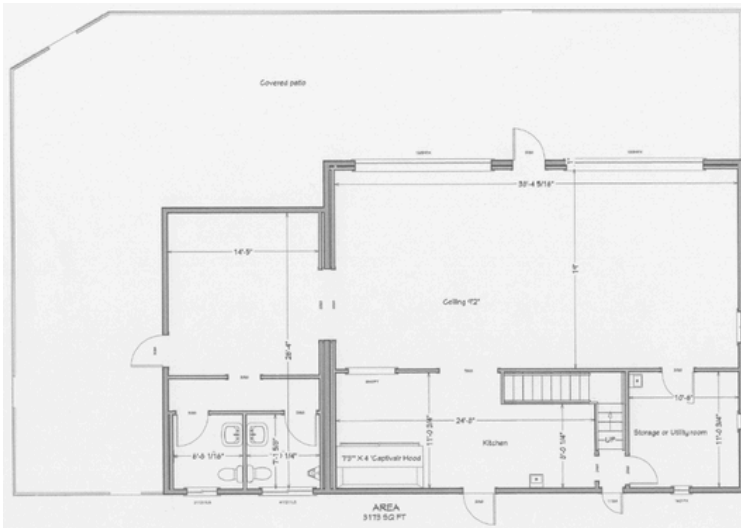
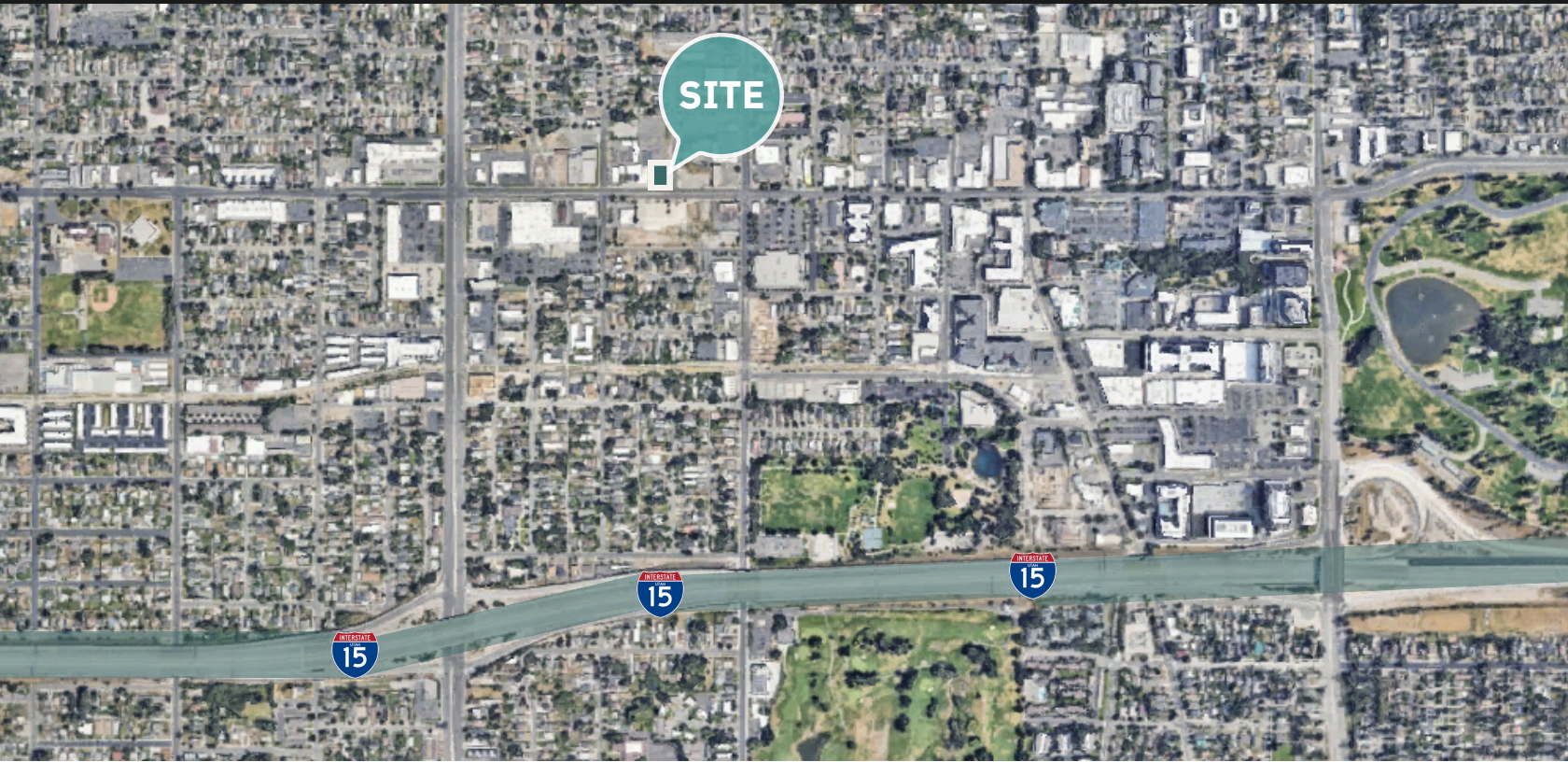
PRINCIPAL BROKER

☎ 801.718.8842 www.cresutah.com

Call Us 
801.876.6070

FREESTANDING RETAIL/RESTAURANT SPACE

837 EAST 2100 SOUTH, SALT LAKE CITY, UT



This information is given with the understanding that all negotiations and/or real estate activity related to the property described above shall be conducted through this CRES office. The above information while not guaranteed, was obtained from sources we believe to be reliable.

CONTACT US

JUSTIN WELCH

PRINCIPAL BROKER

✉ justin@cresutah.com

☎ 801.718.8842

🌐 www.cresutah.com

Call Us
801.876.6070 📶