

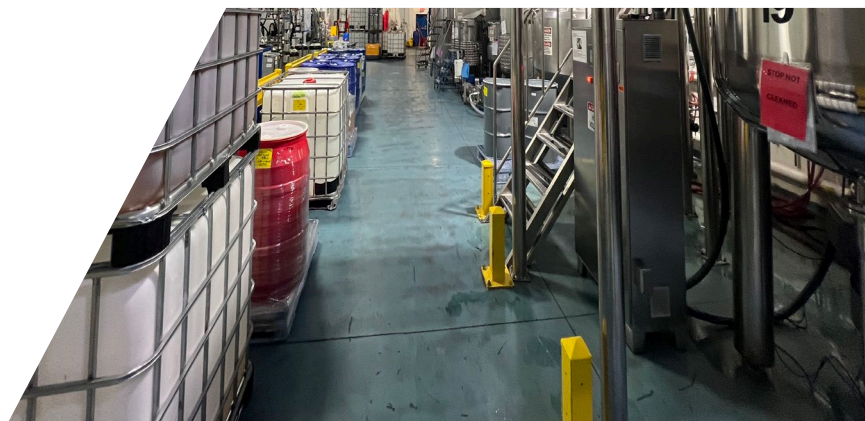
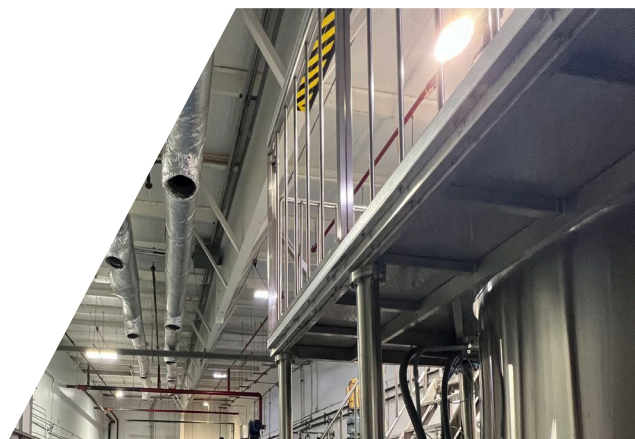


**FOR SALE**  
**30,997 SF**

**15843**

**GUILD  
COURT**

Jupiter, Florida 33478



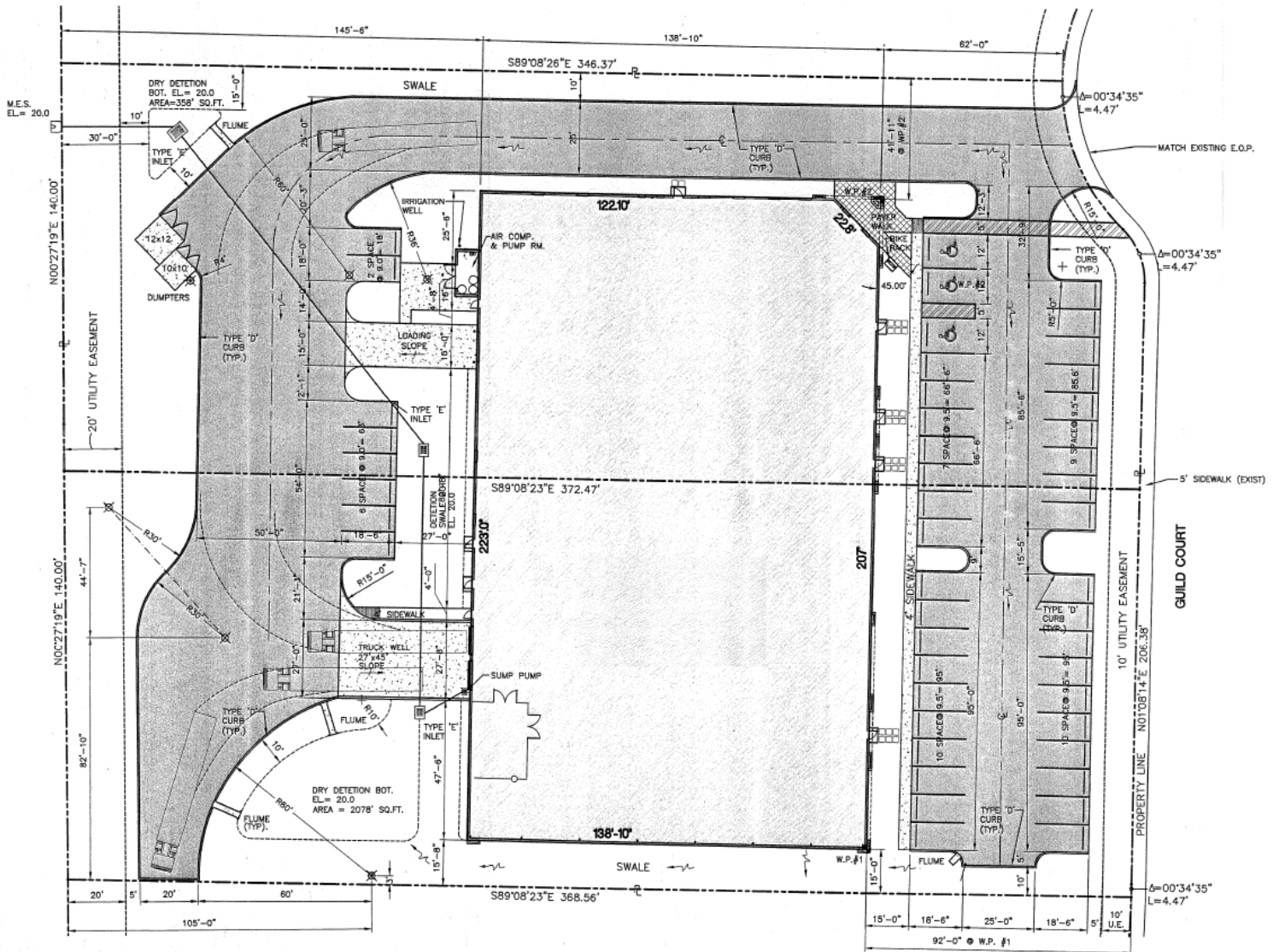
# PROPERTY FEATURES

Total Building:	30,997 SF free standing building on 2.37 acres
Office:	3,764 SF
Clear Height:	20' – 26'
HVAC:	100% air-conditioned
Dock High Doors:	2 with motorized doors and one with an edge of dock leveler
Ramps:	1
Parking:	39 striped spaces in front and 8 striped spaces at the rear
Power:	800 Amps / 240 Volts. Additional 800 Amps / 480 Volts transformer available, but not yet hooked up to the building
Additional Details:	<ul style="list-style-type: none"><li>• 3,000-gallon propane tank</li><li>• ISO Class 8 clean room</li><li>• Portable clean rooms</li><li>• Warehouse racking with in-rack sprinkler system</li><li>• Breakroom</li><li>• Maintenance shop</li><li>• 5 bathrooms</li><li>• Two (2) 15 horsepower compressors</li><li>• 6,000 gallon holding capacity DI water system with loop (24 gallons per minute generation)</li><li>• Filling room with dropped ceiling</li><li>• Two (2) gas boilers and boiler loop</li></ul>





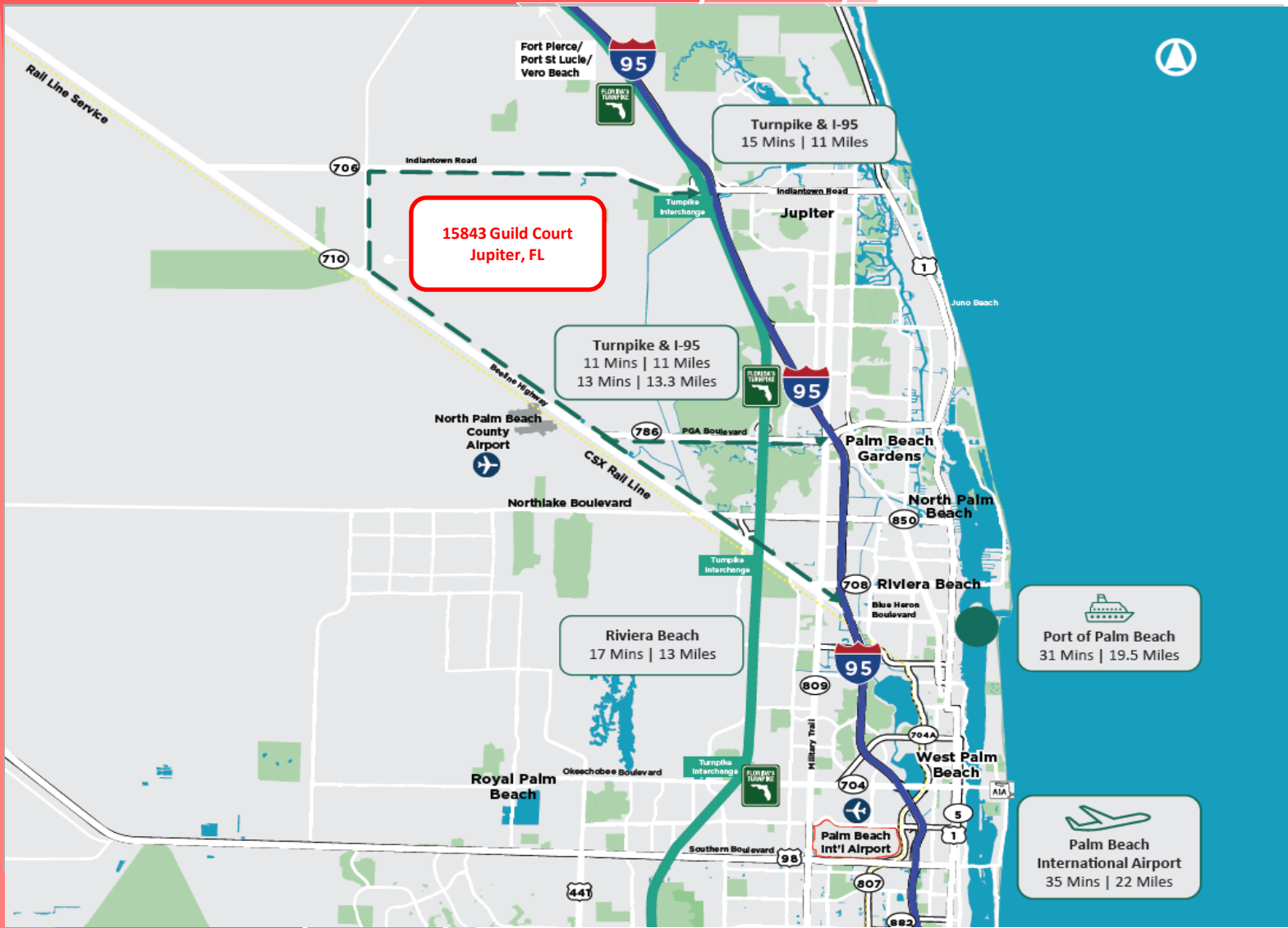
# SITE PLAN



## SITE PLAN

SCALE: 1" = 20'-0"





Chris Metzger

+1 954 415 9155

[Chris.Metzger@cushwake.com](mailto:Chris.Metzger@cushwake.com)

Juliana Palmisano

+1 561 729 7478

[Juliana.Palmisano@cushwake.com](mailto:Juliana.Palmisano@cushwake.com)



©2024 Cushman & Wakefield. All rights reserved. The information contained in this communication is strictly confidential. This information has been obtained from sources believed to be reliable but has not been verified. NO WARRANTY OR REPRESENTATION, EXPRESS OR IMPLIED, IS MADE AS TO THE CONDITION OF THE PROPERTY (OR PROPERTIES) REFERENCED HEREIN OR AS TO THE ACCURACY OR COMPLETENESS OF THE INFORMATION CONTAINED HEREIN, AND SAME IS SUBMITTED SUBJECT TO ERRORS, OMISSIONS, CHANGE OF PRICE, RENTAL OR OTHER CONDITIONS, WITHDRAWAL WITHOUT NOTICE, AND TO ANY SPECIAL LISTING CONDITIONS IMPOSED BY THE PROPERTY OWNER(S). ANY PROJECTIONS, OPINIONS OR ESTIMATES ARE SUBJECT TO UNCERTAINTY AND DO NOT SIGNIFY CURRENT OR FUTURE PROPERTY PERFORMANCE.