



Up to 17,000± sf available

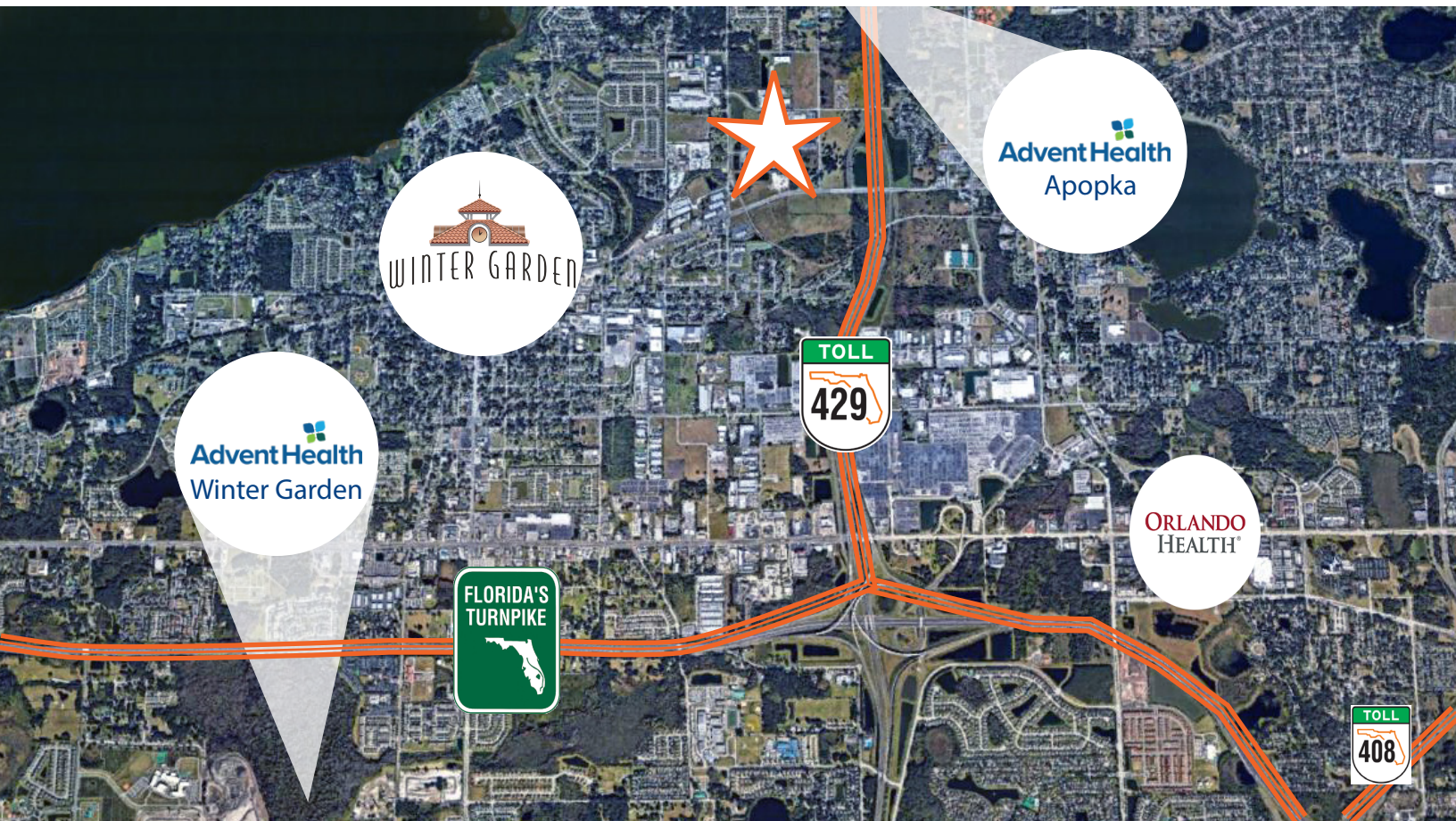
OPPORTUNITY

529 E Crown Point Road is a ±55,000 square foot, Class A, two-story, multi-tenant office building situated on approximately 4.48 acres. Ideally positioned just minutes from State Road 429, State Road 408, and the Florida Turnpike, the property offers excellent regional connectivity. It also enjoys close proximity to a wide range of dining and retail options in Downtown Winter Garden, as well as major healthcare facilities including the new AdventHealth for Children and Orlando Health Regional Hospital. Winter Garden Village is only minutes away, enhancing the area's appeal for both business and lifestyle. **Located in the heart of West Orange County—consistently ranked among the best places in Florida to raise a family and start a business—this property benefits from its position in one of the fastest-growing counties in the state.**

Lisa Bailey, SIOR, Principal
D 407 440 6645
C 407 595 9233
lisa.bailey@avisonyoung.com

Emily Zinaich, Senior Vice President
D 407 440 6641
C 407 230 8797
emily.zinaich@avisonyoung.com

135 W Central Blvd
Suite 700
Orlando, FL 32801



PROPERTY HIGHLIGHTS

- Up to 17,000± sf available
- Monument and Building signage available
- 4/1,000 SF Parking Ratio; building access from parking area
- Large windows bring in natural light
- Office suites with impressive 8' high, double-door entries
- Attractive use of composite wood/metal to create striking contrast
- State of the art Conference Center located in building
- On-site building maintenance

SECURITY/ENERGY MANAGEMENT

- Building key card access control
- Building energy management system
- Security cameras

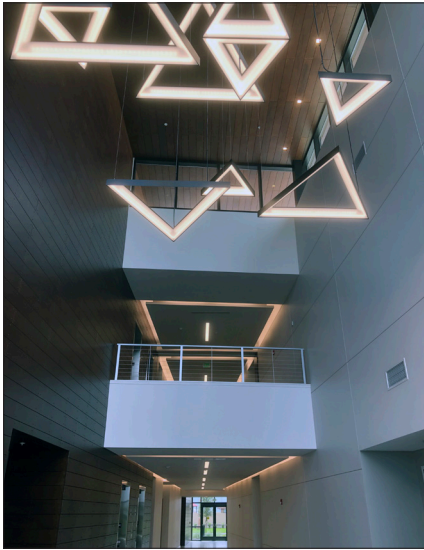
ACCESS & HIGHWAYS

- Access to major highways - S.R. 429, the Florida Turnpike, S.R. 408, and Colonial Drive
- 35 minutes to OIA/MCO

Lisa Bailey, SIOR, Principal
D 407 440 6645
C 407 595 9233
lisa.bailey@avisonyoung.com

Emily Zinaich, Senior Vice President
D 407 440 6641
C 407 230 8797
emily.zinaich@avisonyoung.com

135 W Central Blvd
Suite 700
Orlando, FL 32801

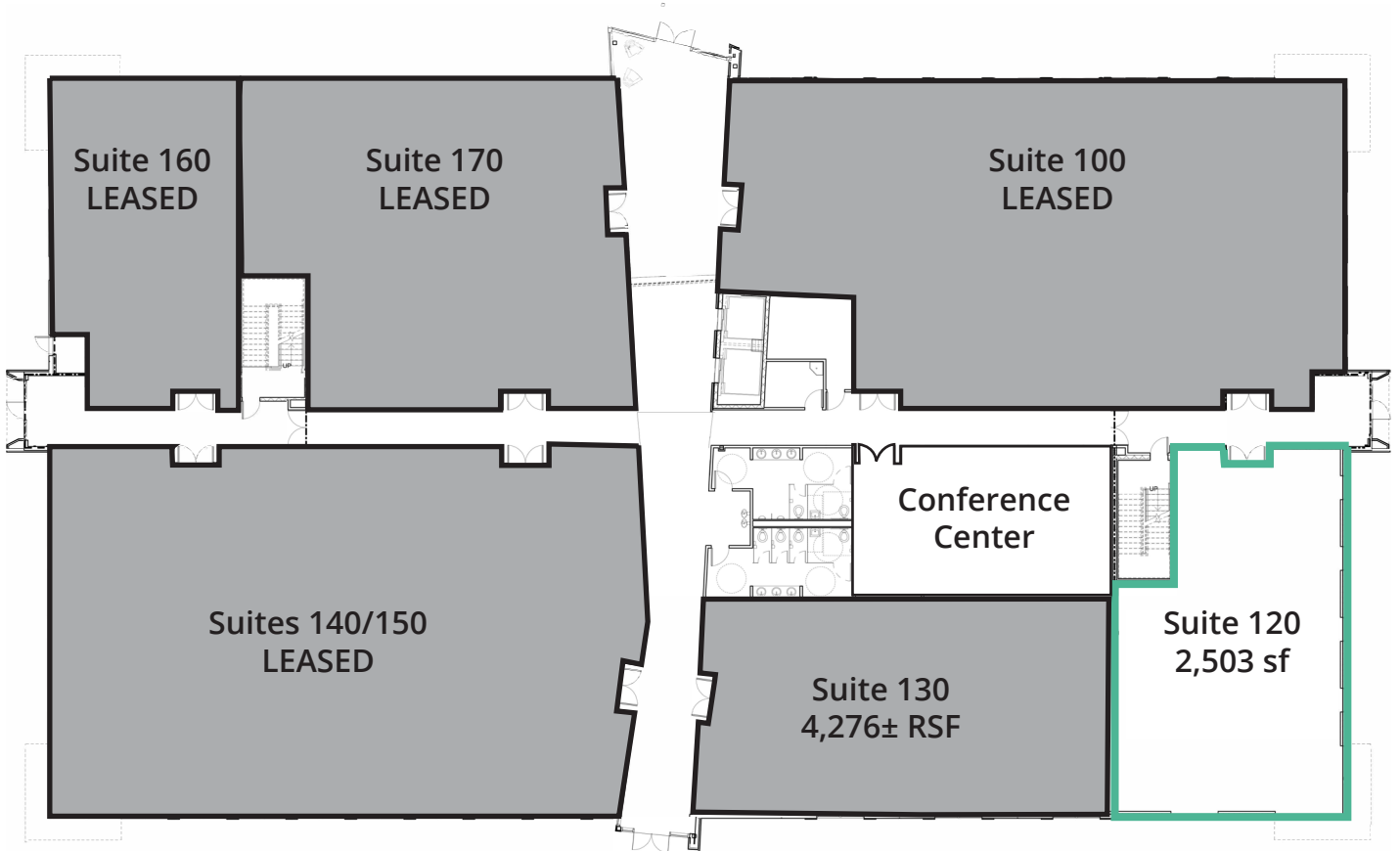


Lisa Bailey, SIOR, Principal
D 407 440 6645
C 407 595 9233
lisa.bailey@avisonyoung.com

Emily Zinaich, Senior Vice President
D 407 440 6641
C 407 230 8797
emily.zinaich@avisonyoung.com

135 W Central Blvd
Suite 700
Orlando, FL 32801

FIRST FLOOR

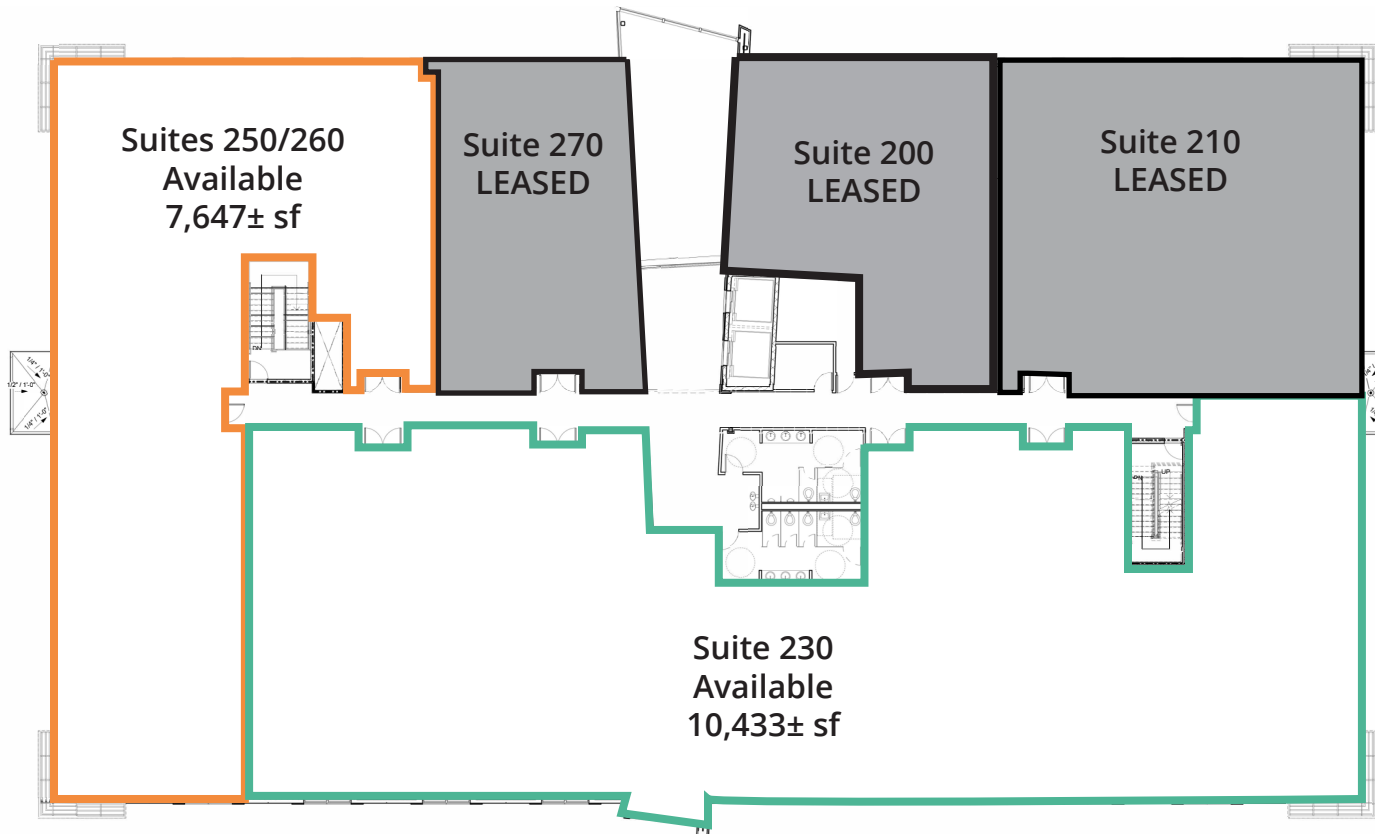


Lisa Bailey, SIOR, Principal
D 407 440 6645
C 407 595 9233
lisa.bailey@avisonyoung.com

Emily Zinaich, Senior Vice President
D 407 440 6641
C 407 230 8797
emily.zinaich@avisonyoung.com

135 W Central Blvd
Suite 700
Orlando, FL 32801

SECOND FLOOR

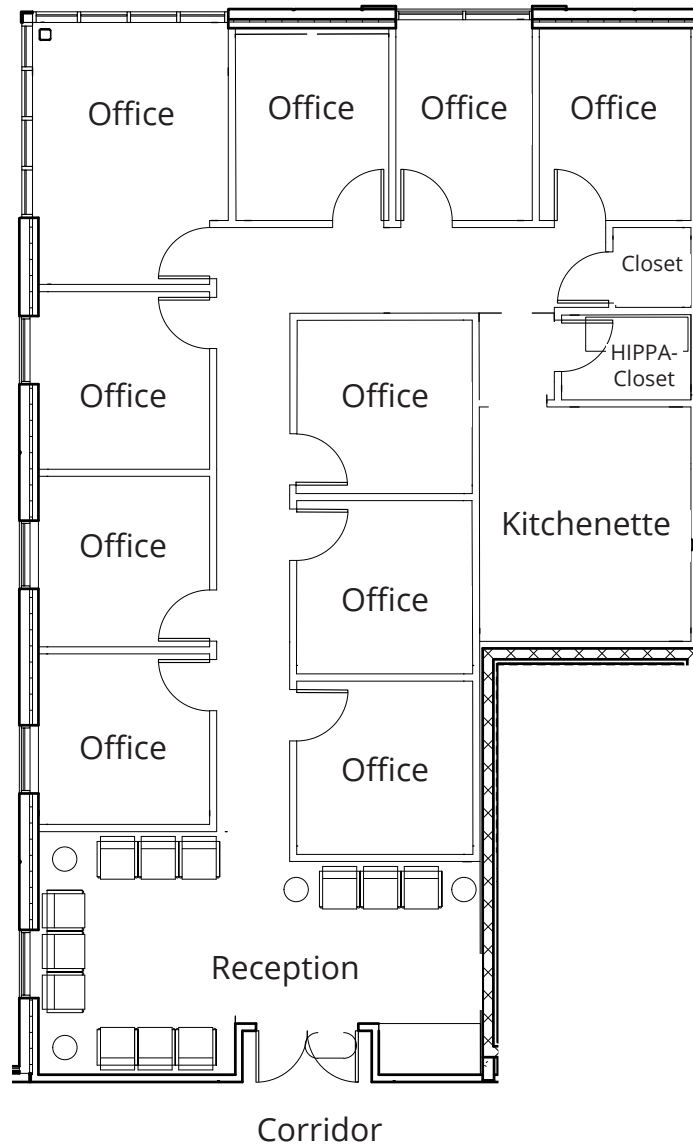


Lisa Bailey, SIOR, Principal
D 407 440 6645
C 407 595 9233
lisa.bailey@avisonyoung.com

Emily Zinaich, Senior Vice President
D 407 440 6641
C 407 230 8797
emily.zinaich@avisonyoung.com

135 W Central Blvd
Suite 700
Orlando, FL 32801

SUITE 120 - 2,503 SF
Sublease Expires - May 2028

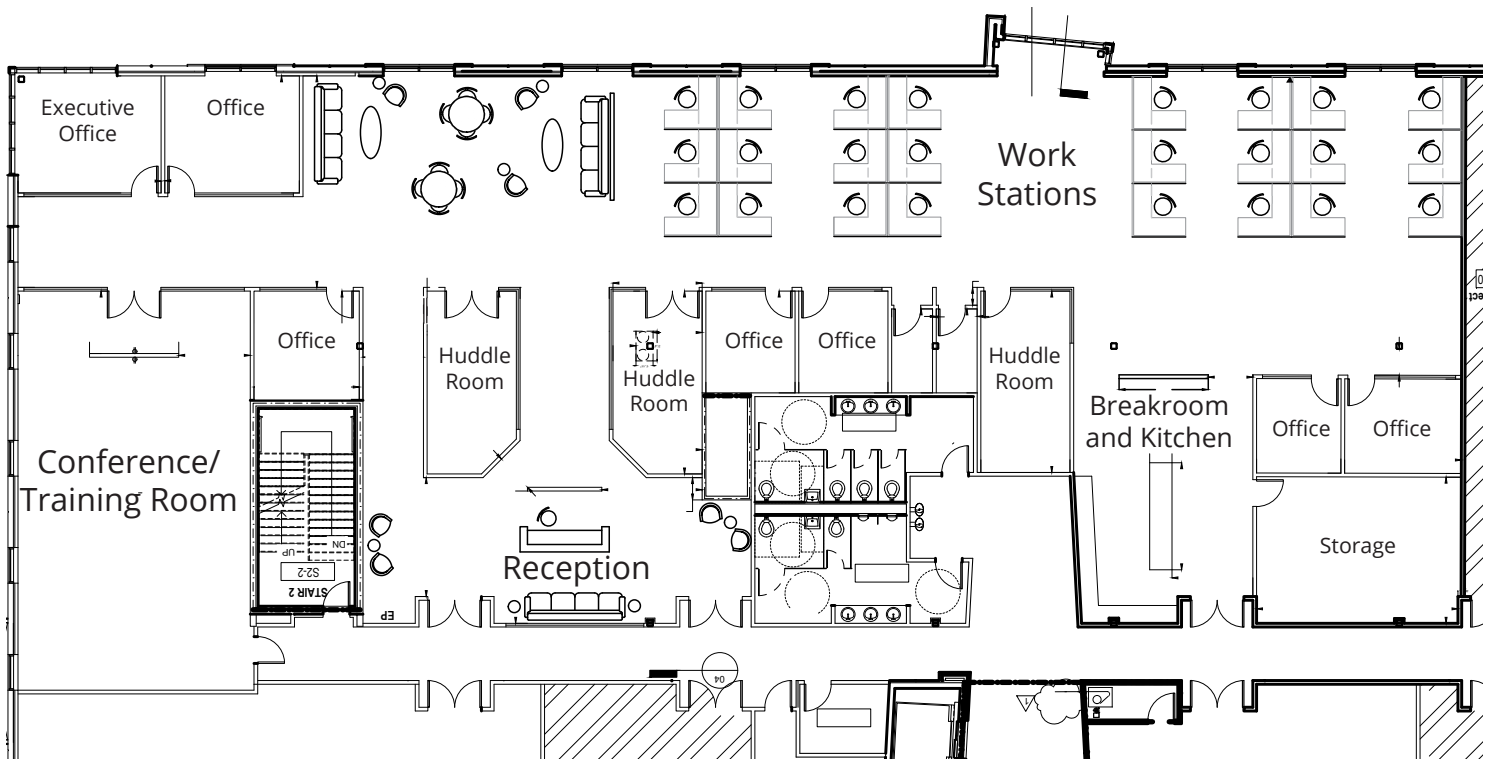


Lisa Bailey, SIOR, Principal
D 407 440 6645
C 407 595 9233
lisa.bailey@avisonyoung.com

Emily Zinaich, Senior Vice President
D 407 440 6641
C 407 230 8797
emily.zinaich@avisonyoung.com

135 W Central Blvd
Suite 700
Orlando, FL 32801

SUITE 230 - 10,433± SF



Lisa Bailey, SIOR, Principal
D 407 440 6645
C 407 595 9233
lisa.bailey@avisonyoung.com

Emily Zinaich, Senior Vice President
D 407 440 6641
C 407 230 8797
emily.zinaich@avisonyoung.com

135 W Central Blvd
Suite 700
Orlando, FL 32801

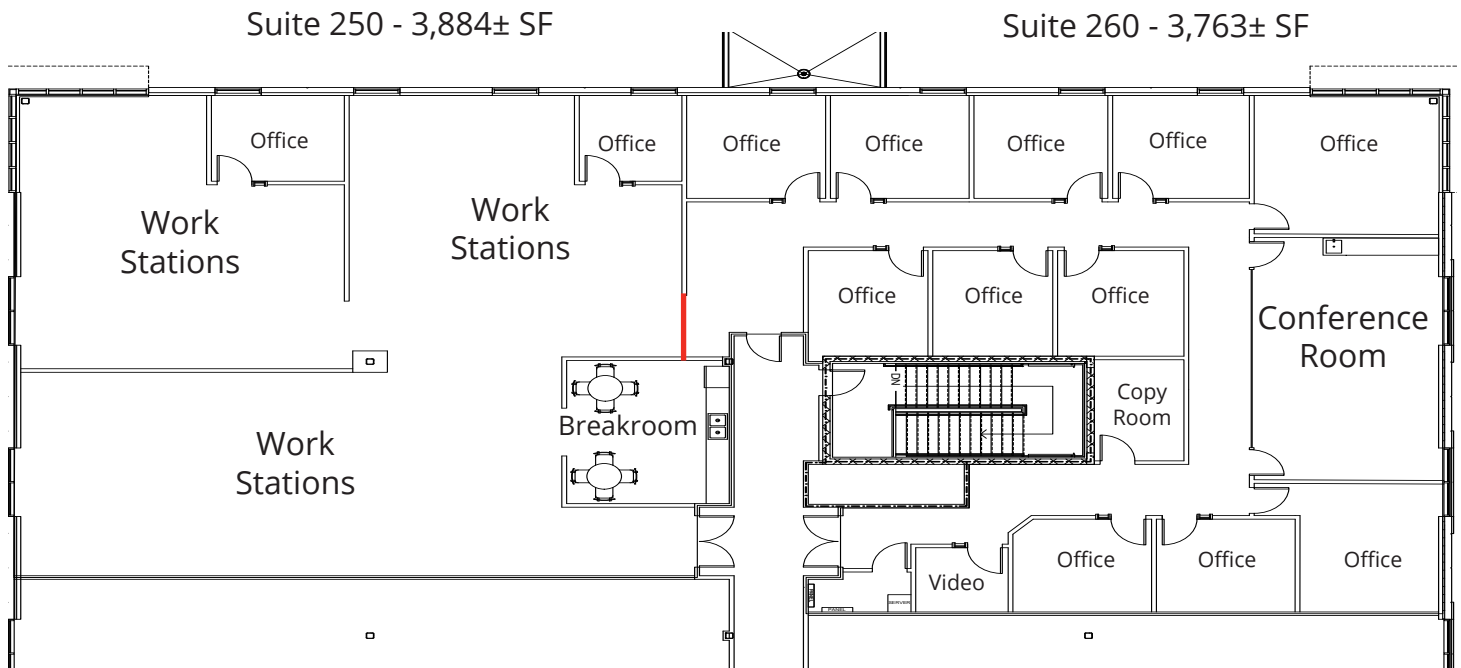
**AVISON
YOUNG**

Office / Medical Space For Lease

529 E Crown Point Road
Ocoee, FL 34761



SUITE 250-260 - 7,647± SF

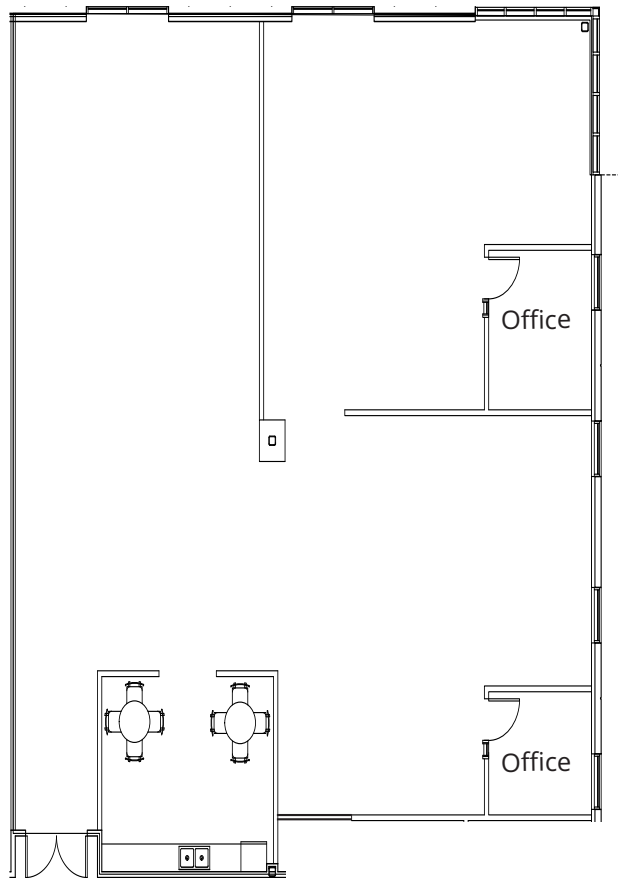


Lisa Bailey, SIOR, Principal
D 407 440 6645
C 407 595 9233
lisa.bailey@avisonyoung.com

Emily Zinaich, Senior Vice President
D 407 440 6641
C 407 230 8797
emily.zinaich@avisonyoung.com

135 W Central Blvd
Suite 700
Orlando, FL 32801

SUITE 250 - 3,884± SF

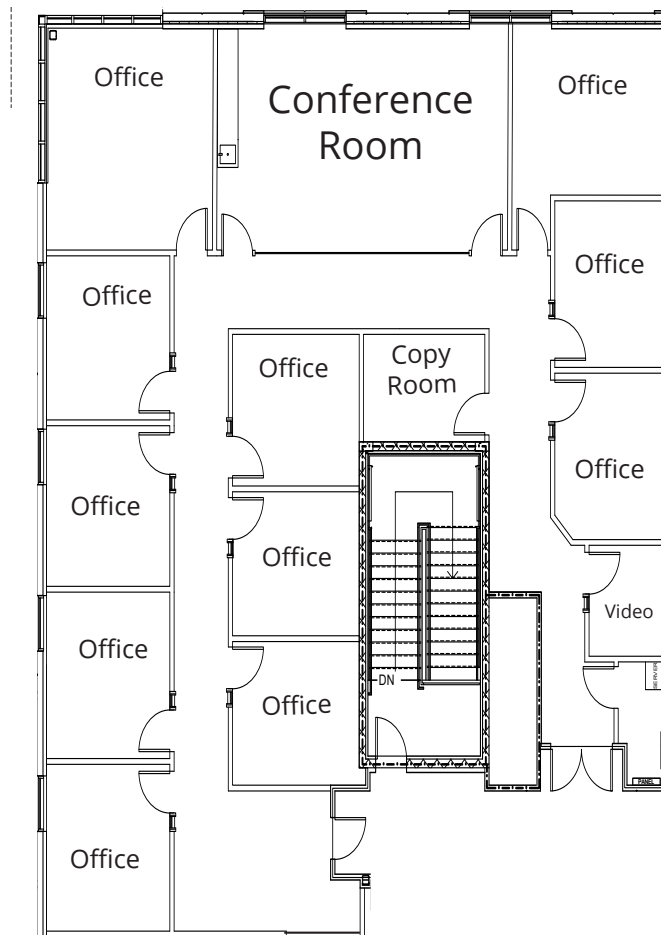


Lisa Bailey, SIOR, Principal
D 407 440 6645
C 407 595 9233
lisa.bailey@avisonyoung.com

Emily Zinaich, Senior Vice President
D 407 440 6641
C 407 230 8797
emily.zinaich@avisonyoung.com

135 W Central Blvd
Suite 700
Orlando, FL 32801

SUITE 260 - 3,763± SF



Lisa Bailey, SIOR, Principal
D 407 440 6645
C 407 595 9233
lisa.bailey@avisonyoung.com

Emily Zinaich, Senior Vice President
D 407 440 6641
C 407 230 8797
emily.zinaich@avisonyoung.com

135 W Central Blvd
Suite 700
Orlando, FL 32801