

FOR LEASE

**OFFICE /  
WAREHOUSE**

**2310 N Kerby,  
Portland, OR 97227**

- Fully renovated in 2021
- 2 private offices w/open workspace
- Reception desk + break room w/kitchenette
- 2 restrooms, incl shower
- 16' warehouse ceilings
- 12' grade-level overhead door

Large, paved fenced yard w/onsite parking, downtown views, close to freeways, max yellow line, close to restaurants and coffee shops



Eli Haworth-Kaufka  
Principal Broker  
503-502-9403  
eli@cloudcityrealty.com

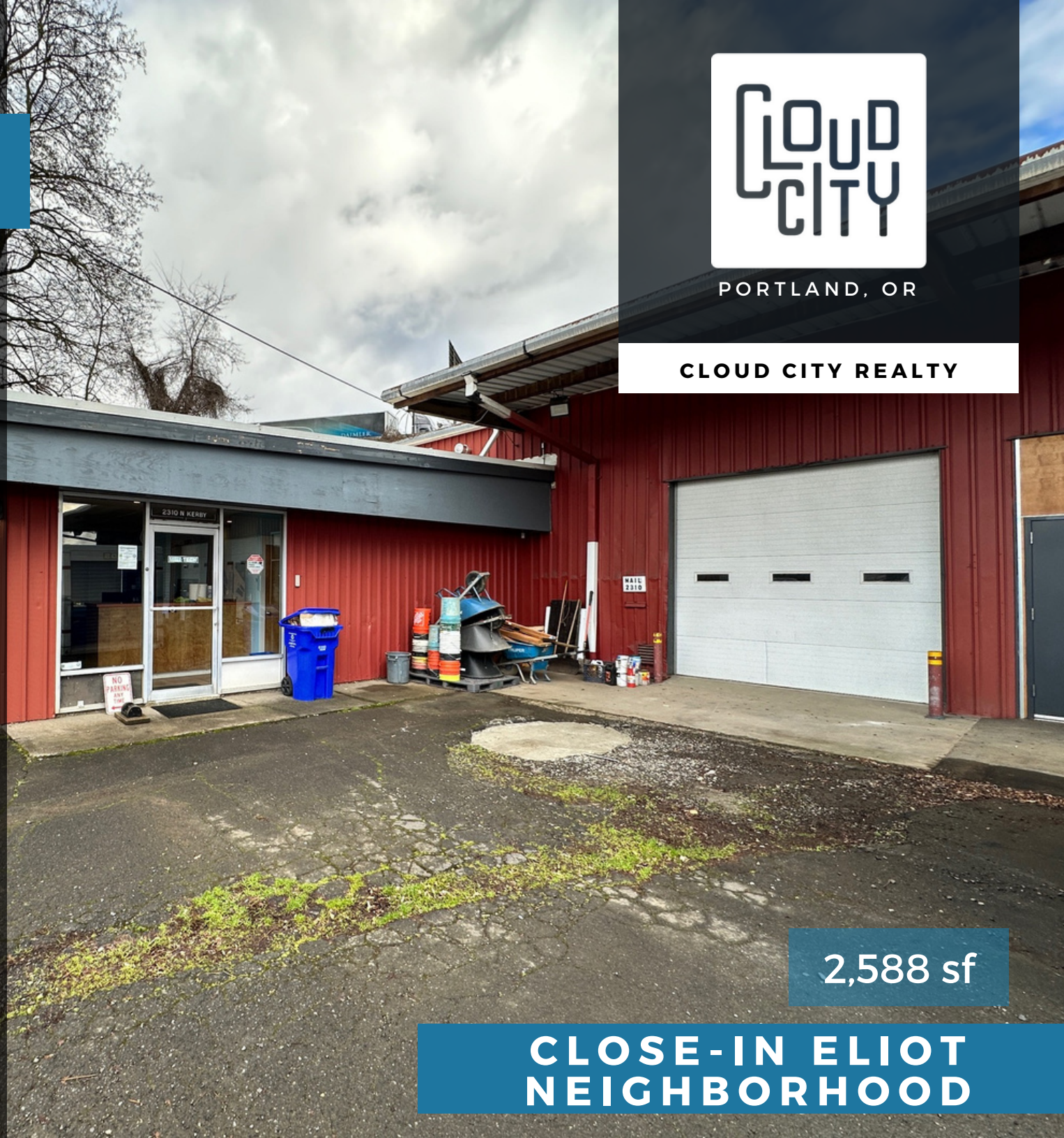


PORTLAND, OR

**CLOUD CITY REALTY**

**2,588 sf**

**CLOSE-IN ELIOT  
NEIGHBORHOOD**







Warehouse

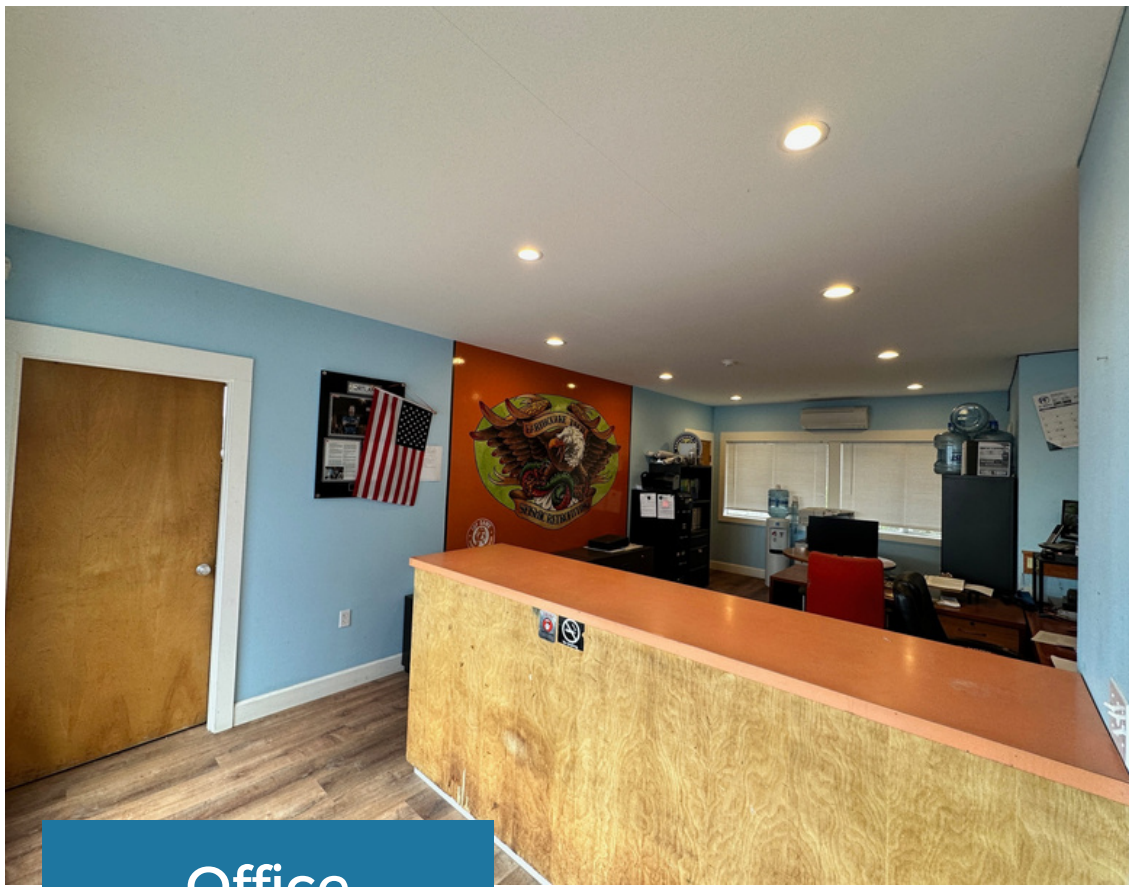
Warehouse  
~1,625 SF

- 16' ceilings
- 12' grade-level overhead door
- Insulated walls and ceiling
- High efficiency LED lighting

\$18/sf + low NNN







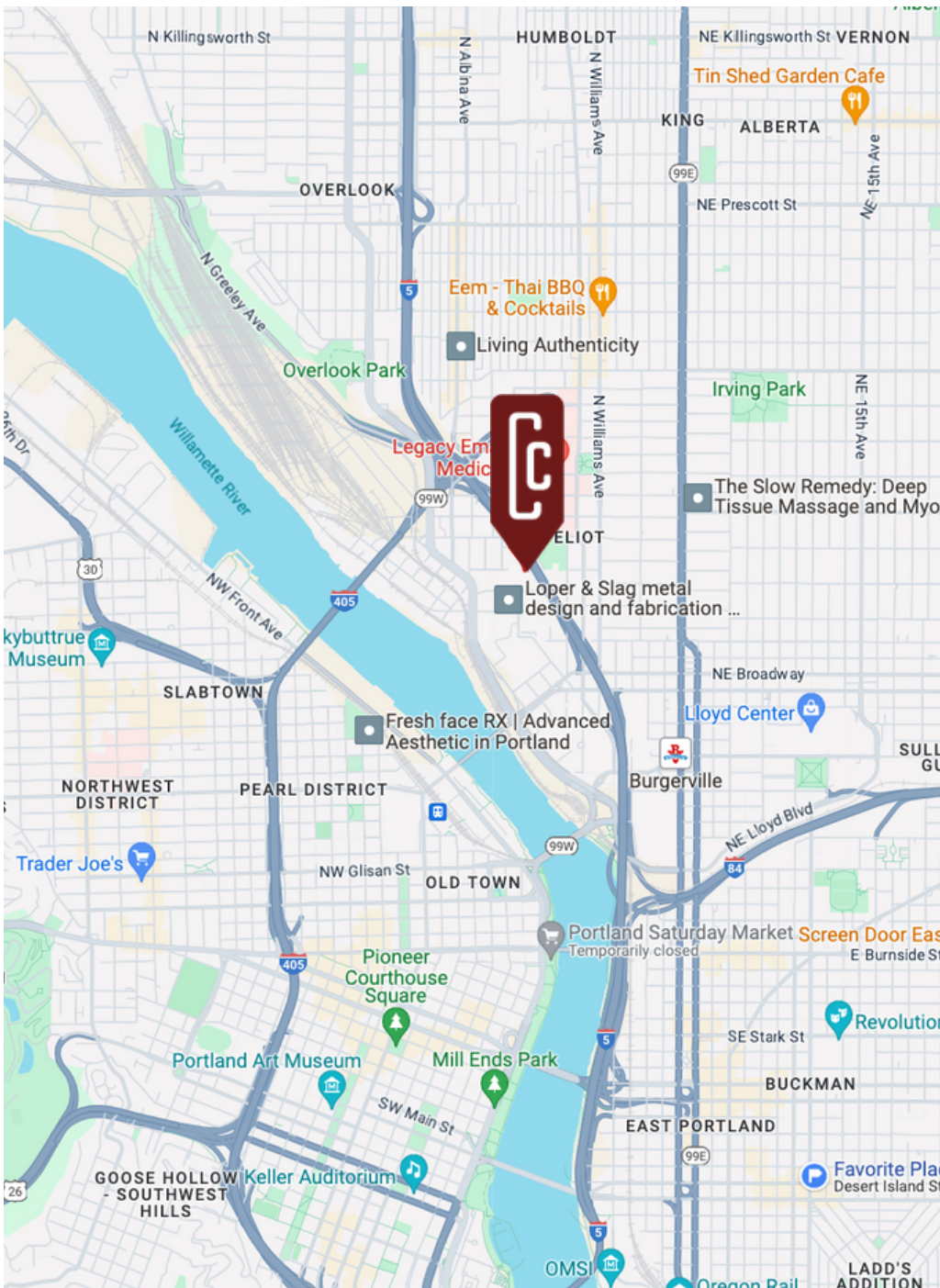
Office



**Office**  
**~963 SF**

- Fully renovated in 2021
- 2 private offices
- 1 larger open work space with reception desk
- 1 large break room with kitchenette
- 2 bathrooms, incl 1 shower






 Cloud City Realty  
 5901 NE Shaver St  
 Portland, OR 97213  
[www.cloudcityrealty.com](http://www.cloudcityrealty.com)  
 503-339-1456

Eli Haworth-Kaufka  
 Principal Broker  
 503-502-9403  
[eli@cloudcityrealty.com](mailto:eli@cloudcityrealty.com)