

Bucktown Land Site along The 606

POTENTIAL 35 UNIT DEVELOPMENT

2250 W Bloomingdale Ave, Chicago, IL 60647

Cesar Alvarez

773.344.6346

cesar@chicagocommercial.com



chicagocommercial.com



OFFERING SUMMARY

Sale Price: \$1,850,000

Site Size: 10,553

Price / SF: \$175

Zoning: M1-2

PROPERTY OVERVIEW

10,553 SF Bucktown corner located land site. One of the last remaining parcels east of Western Ave. with frontage on the 606 Trail. Short walk to the Blue Line and steps to the 606 Trail entrance at Milwaukee & Bloomingdale. Floor plans and renderings available for a 35 unit residential development with a rooftop deck and parking. Please call/email broker for more information.

PROPERTY HIGHLIGHTS

- Bucktown land site with 10,553 SF
- Floor plans & renderings available
- Frontage on the 606 Trail
- Short walk to the Blue Line
- Surrounded by new and seasoned development
- Corner of Bloomingdale & Winnebago Ave.

Bucktown Land Site along The 606

POTENTIAL 35 UNIT DEVELOPMENT

2250 W Bloomingdale Ave, Chicago, IL 60647

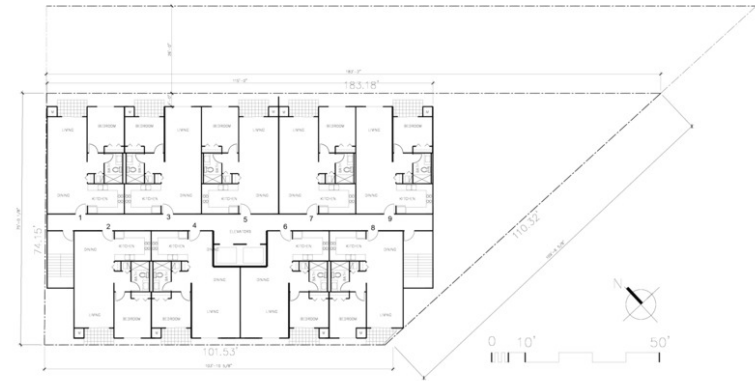
Cesar Alvarez

773.344.6346

cesar@chicagocommercial.com

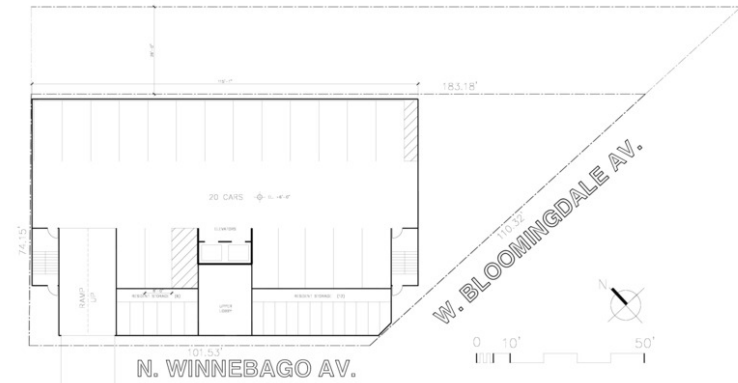


chicagocommercial.com



TYPICAL FLOOR PLAN

ALLEN OLMER



35 UNIT SCHEME

SECOND FLOOR PLAN

ALLEN OLMER

Bucktown Land Site along The 606

BUCKTOWN WAREHOUSE WITH GATED PARKING

2250 W Bloomingdale Ave, Chicago, IL 60647

Cesar Alvarez

773.344.6346

cesar@chicagocommercial.com



chicagocommercial.com



Google

Imagery ©2018 , DigitalGlobe, Sanborn, U.S. Geological Survey, USDA Farm Service Agency