

FOR LEASE

FEDERAL WAY PLAZA

1814 South 324th Place Federal Way, WA 98003



OFFERING SUMMARY

Lease Rate:	\$3,100 to \$4,100 per month (Modified Gross)
Building Size:	6,096 SF
Space Available:	1,217 SF - 3,371 SF
Lot Size:	20,083 SF
Number of Units:	2
Year Built:	1974
Renovated:	1995
Zoning:	BC

PROPERTY OVERVIEW

Prime medical/professional office space available for lease near The Commons at Federal Way, just off Interstate 5. Suite C offers up to 3,371 SF on two levels, which can be leased together or separately. The main level includes 2,154 SF for \$3,100 per month plus utilities, while the basement level includes 1,217 SF for \$1,000 per month plus utilities. Abundant parking onsite and the property is conveniently located just off South 320th Street and Pacific Highway South, close to the Federal Way Transit Center and the new light rail stop. With BC zoning allowing a wide variety of uses, this location is ideal for medical and professional tenants such as accountants, architects, attorneys, counselors, dentists, doctors, engineers, insurance agents, marketing agencies, massage therapists, real estate offices, therapists, and more.

PROPERTY HIGHLIGHTS

- Prime location professional office or medical space near the freeway
- Abundant parking onsite

PROPERTY WEBSITE

[Click Here](#)

OTHER RESOURCES

[Video Tour](#)

Dominic Temmel
(253) 273-6474
dtemmel@cbcworldwide.com

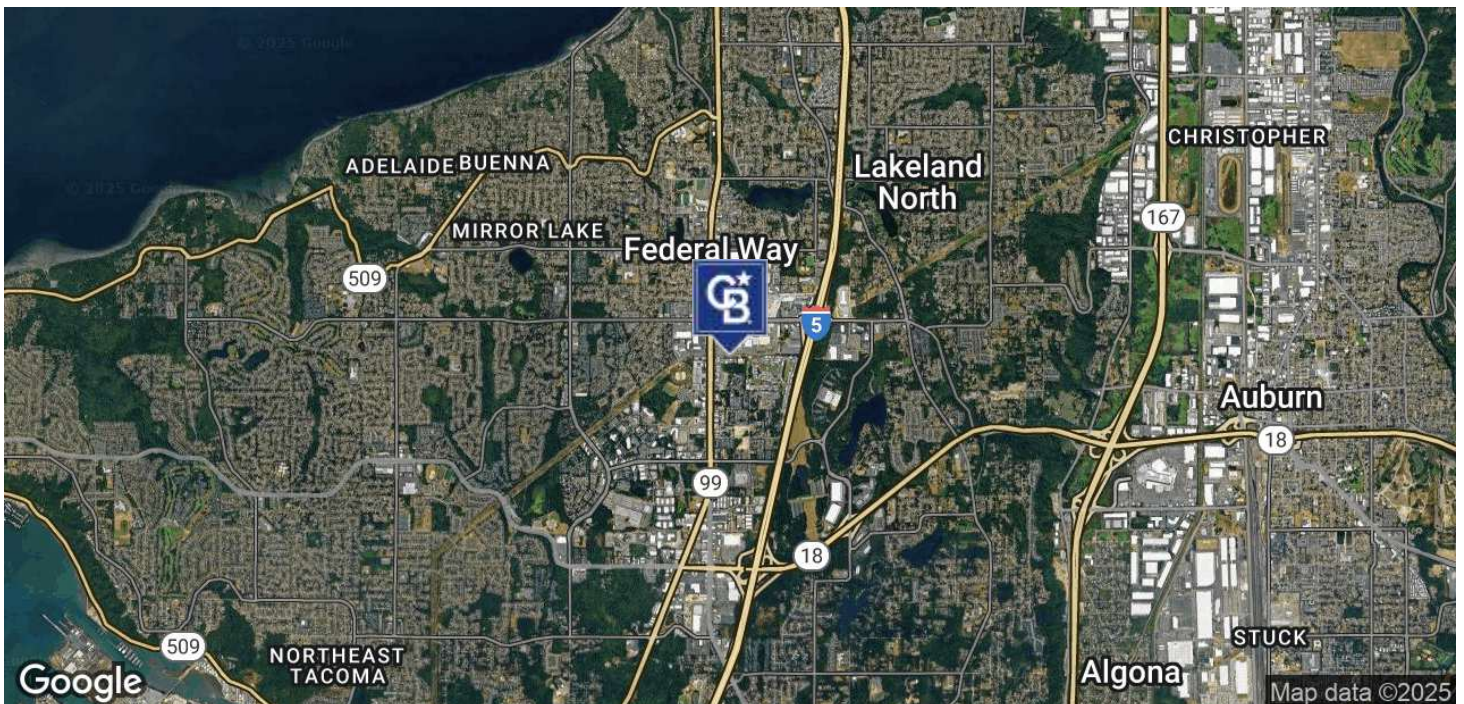


**COLDWELL BANKER
COMMERCIAL**
DANFORTH

FOR LEASE

FEDERAL WAY PLAZA

1814 South 324th Place Federal Way, WA 98003



Dominic Temmel
(253) 273-6474
dtemmel@cbcworldwide.com

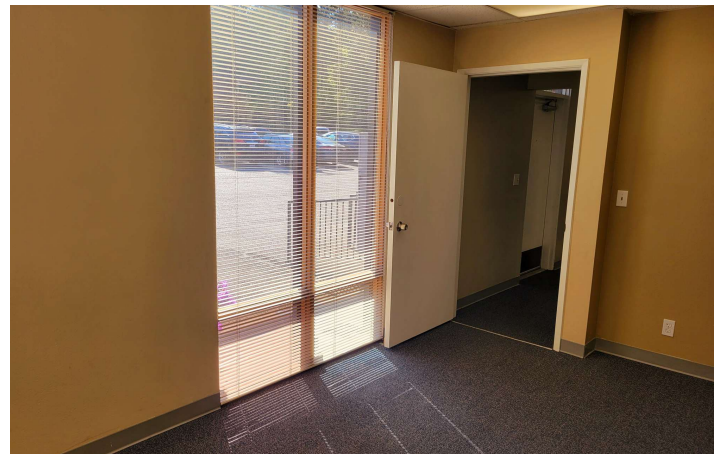


**COLDWELL BANKER
COMMERCIAL**
DANFORTH

FOR LEASE

FEDERAL WAY PLAZA

1814 South 324th Place Federal Way, WA 98003



Dominic Temmel
(253) 273-6474
dtemmel@cbcworldwide.com



**COLDWELL BANKER
COMMERCIAL**
DANFORTH