

11960 SOUTH HARLAN ROAD

FOR LEASE

±145,229 SF
Available



Central Valley

11960 South Harlan Road
Lathrop, CA 95330



OVERVIEW

11960 South Harlan Road
Lathrop, CA 95330

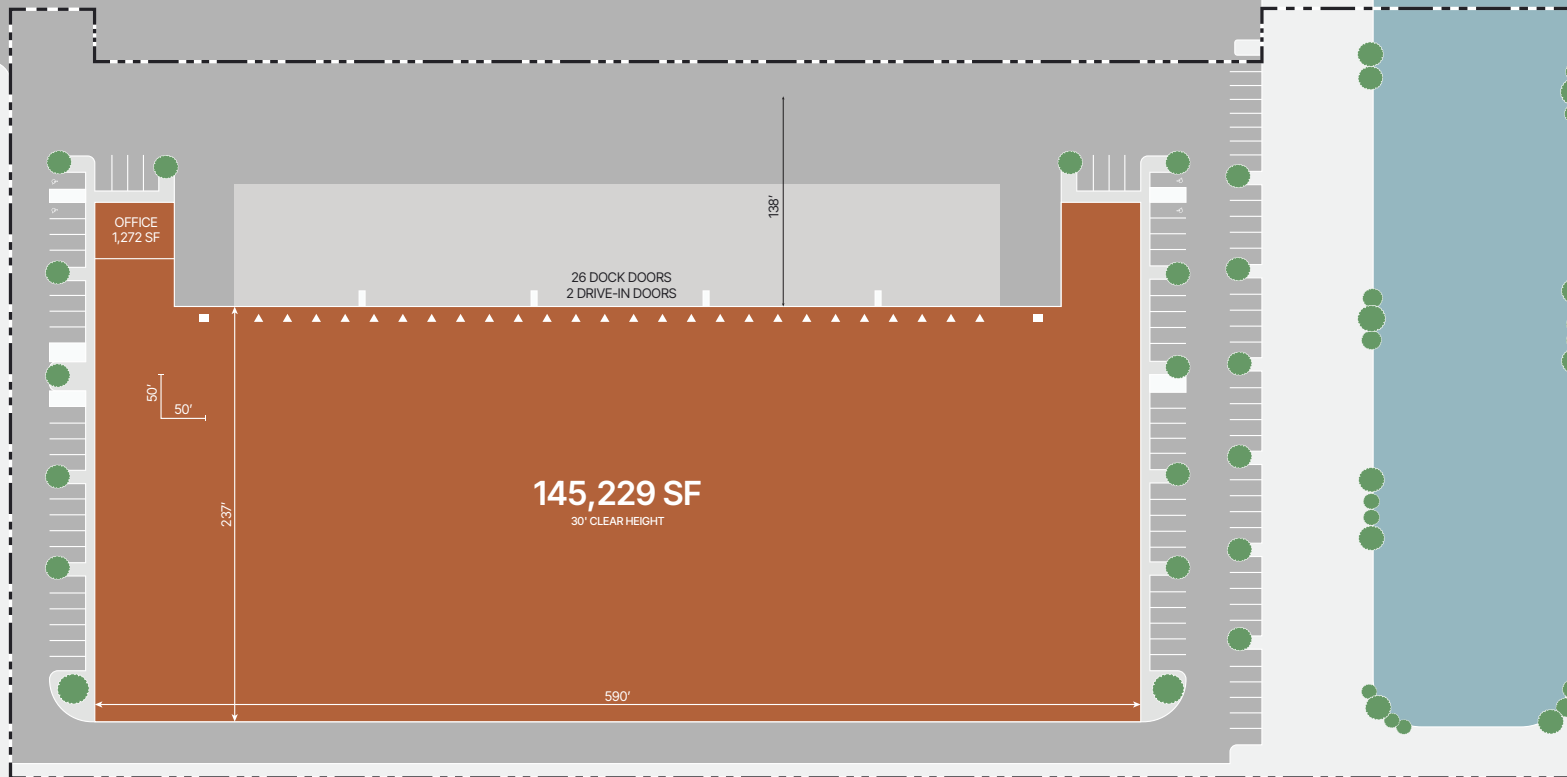
Central Valley

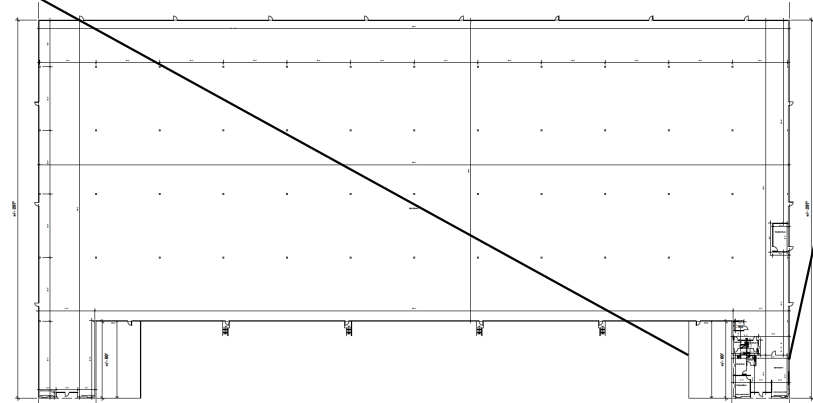
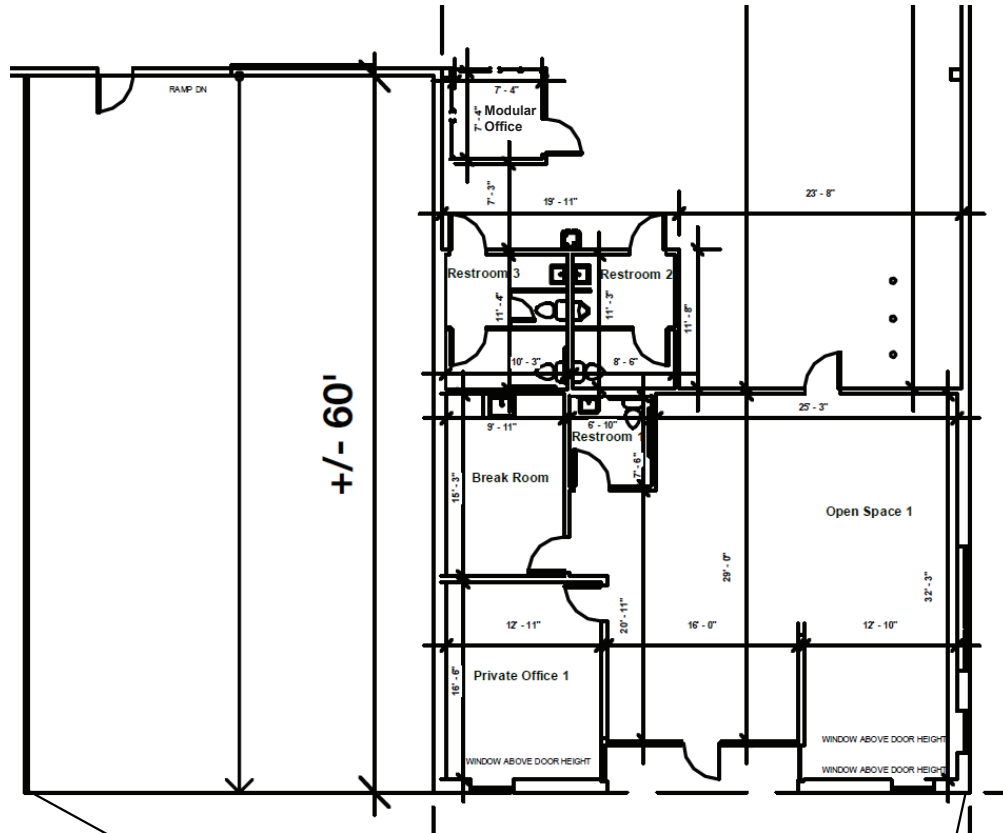


PROPERTY SPECIFICATIONS

Available SF	±145,229 SF
Office SF	±1,272 SF
Fire Protection	ESFR
Clear Height	30'
Dock-High Doors	26 (±9' X ±10')
Drive-In Doors	2 (±12' X ±14')
Power	1,500 Amps @ 277/480V
Concrete Apron	±70'
Skylights	Throughout Warehouse
Column Spacing	±50' X ±50'
Truck Court Depth	±140'
Zoning	IL (Limited Industrial) City of Lathrop
Dimensions	±590' X ±237'

← SOUTH HARLAN ROAD







ESFR Fire Protection & Secured
Truck Court



Skylights Throughout Warehouse



Single Tenant Building with
26 Dock Doors

LOCAL ACCESS

I-5
1 MILES

108

SACRAMENTO
55.5 MILES

E ROTH RD

Manteca Junction

99

J3

LATHROP RD

E LATHROP RD

Lathrop

E LOUISE AVE

N UNION RD

W LOUISE AVE

Manteca

W YOSEMITE AVE

J3

S UNION RD

N MAIN ST

120

120

120

I-5/TRACY
12.9 MILES

5

5

5

REGIONAL ACCESS

I-5/TRACY
12.9 MILES

SACRAMENTO
55.5 MILES

FEDEX AIR
59.1 MILES

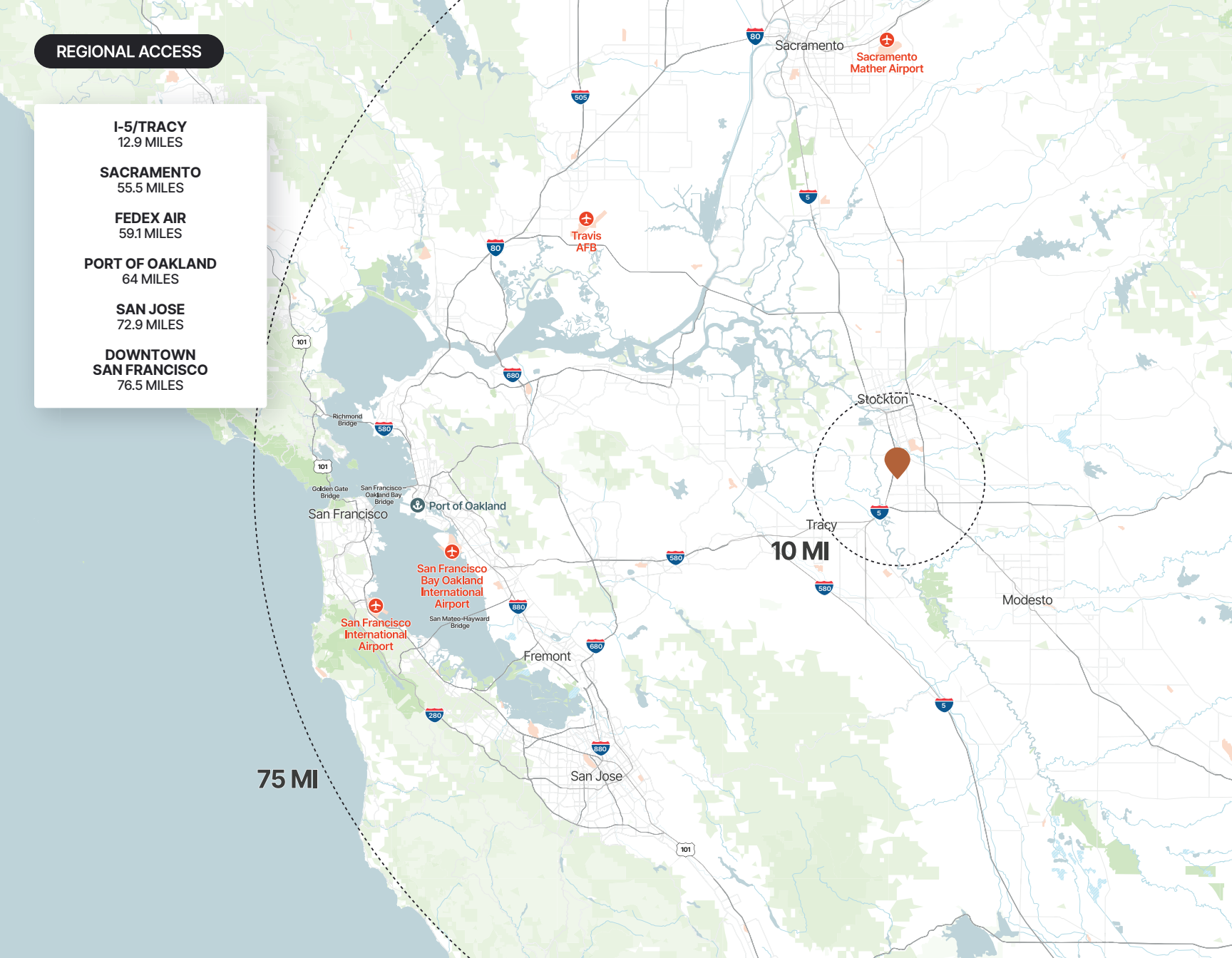
PORT OF OAKLAND
64 MILES

SAN JOSE
72.9 MILES

**DOWNTOWN
SAN FRANCISCO**
76.5 MILES

75 MI

10 MI



CONTACT INFORMATION



11960 South Harlan Road
Lathrop, CA 95330

Tyson Vallenari, SIOR

tyson.vallenari@cushwake.com
(510) 919-2328

CA Lic. 01480887

Blake Rasmussen

blake.rasmussen@cushwake.com
(209) 481-7044

CA Lic. 01010250

Kevin DalPorto

kevin.dalporto@cushwake.com
(209) 601-2476

CA Lic. 01212935

This is not an offer or acceptance of an offer to lease space. A lease will only be offered or made in a written agreement signed by landlord. No representation or warranty of any kind is made by landlord unless set forth in a written definitive lease executed by the landlord.