

POLLOCK

Creative Office



1320 Ellsworth Industrial Dr.
Atlanta, GA 30318

1,056 - 2,151 SF
For Lease

Katie Sentell

katie@pollockcommercial.com

O | (404) 596.8419 M | (404) 394.9599

CORFAC
INTERNATIONAL



PROPERTY DESCRIPTION

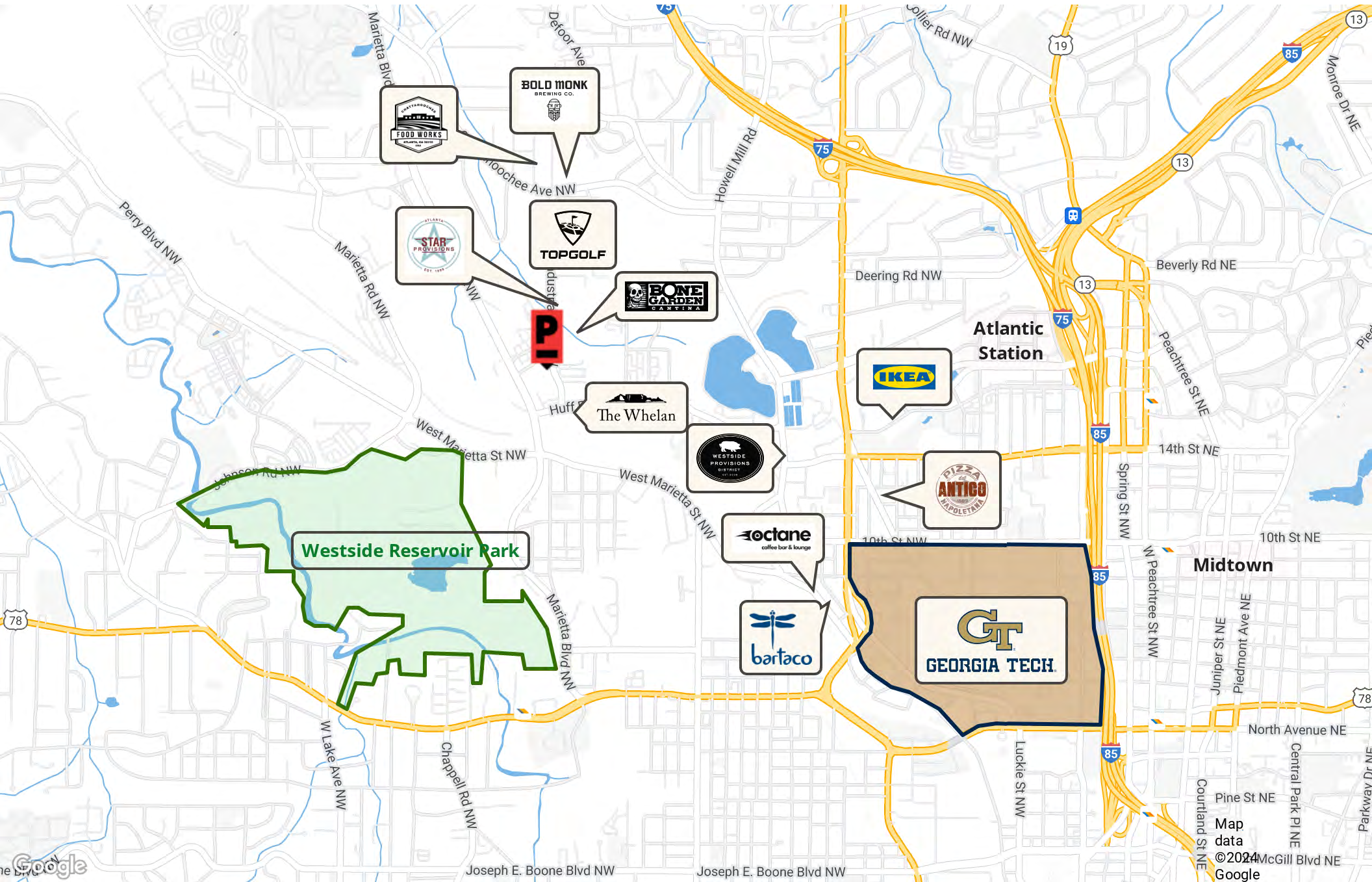
Glassworks is one of West Midtown's early adaptive re-use projects. This quiet loft-office development offers free surface parking and is within walking distance to Star Provisions, Bacchanalia, Bone Garden Cantina, Twisted Soul Cookhouse and more.

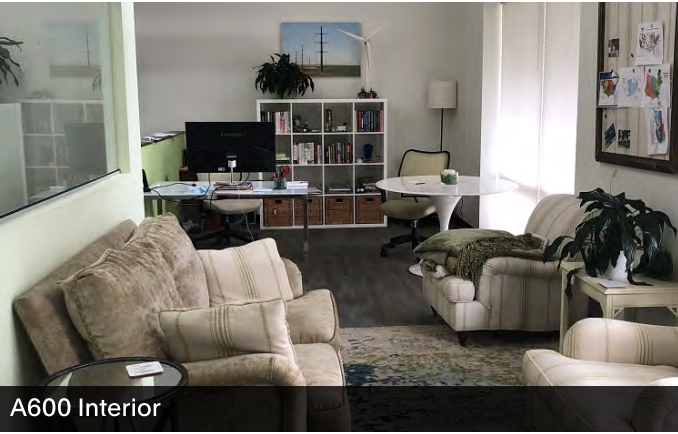
PROPERTY HIGHLIGHTS

- Plentiful, free surface parking
- Secured access and dual entry
- Creative, loft-style finishes
- High ceilings and natural light
- Shared courtyard
- Great West Midtown location

| SPACES | LEASE RATE | SPACE SIZE |
|-------------|---------------|------------------|
| Suite A600 | \$35.00 SF/yr | 1,095 - 2,151 SF |
| Suite A1000 | \$35.00 SF/yr | 1,056 - 2,151 SF |
| Suite A1700 | \$35.00 SF/yr | 1,789 SF |

| DEMOGRAPHICS | 1 MILE | 3 MILES | 5 MILES |
|-------------------|----------|----------|----------|
| Total Households | 2,639 | 38,650 | 118,479 |
| Total Population | 8,687 | 107,914 | 274,797 |
| Average HH Income | \$74,142 | \$74,869 | \$82,706 |





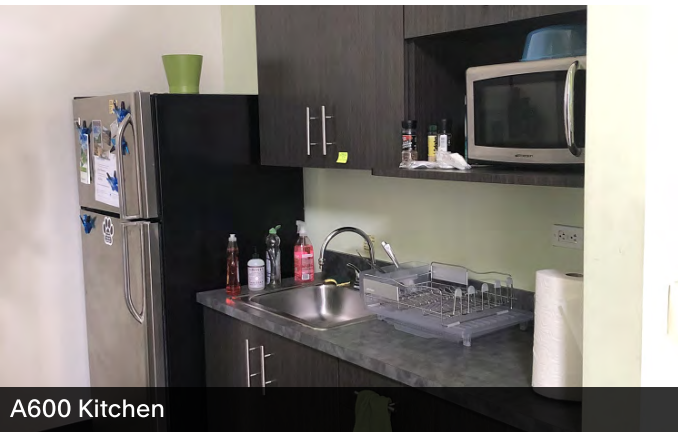
A600 Interior



A1000 Conference/Office



A1700 Entry



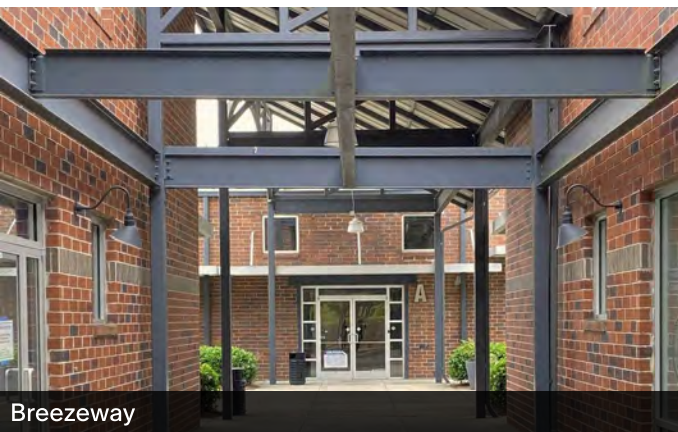
A600 Kitchen



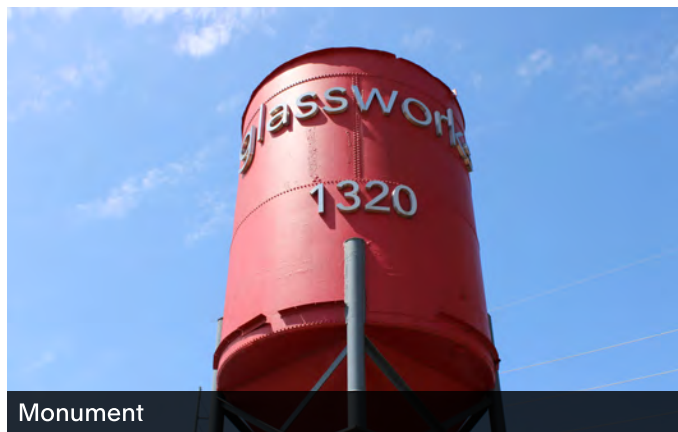
A1000 Kitchen/Open Area



A1700 Kitchen



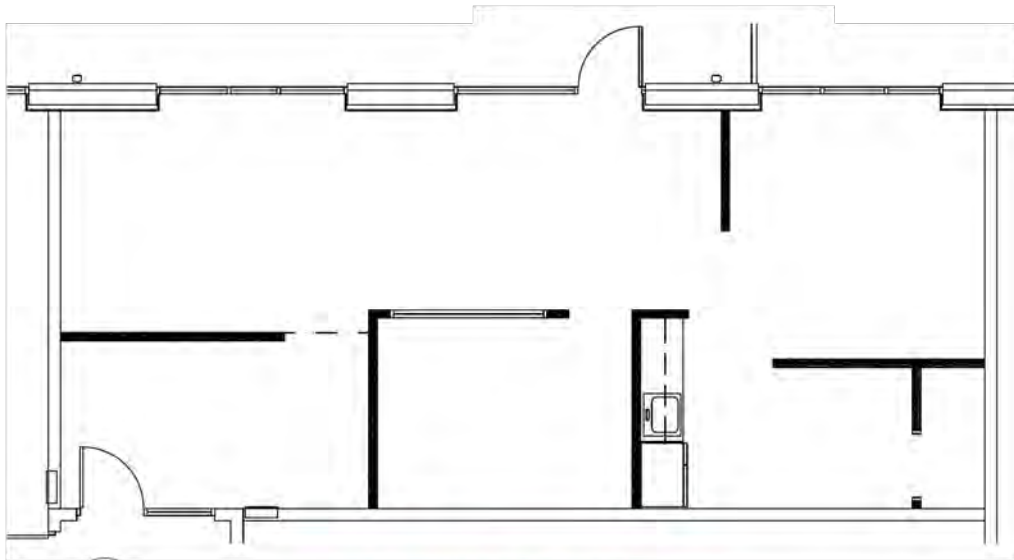
Breezeway



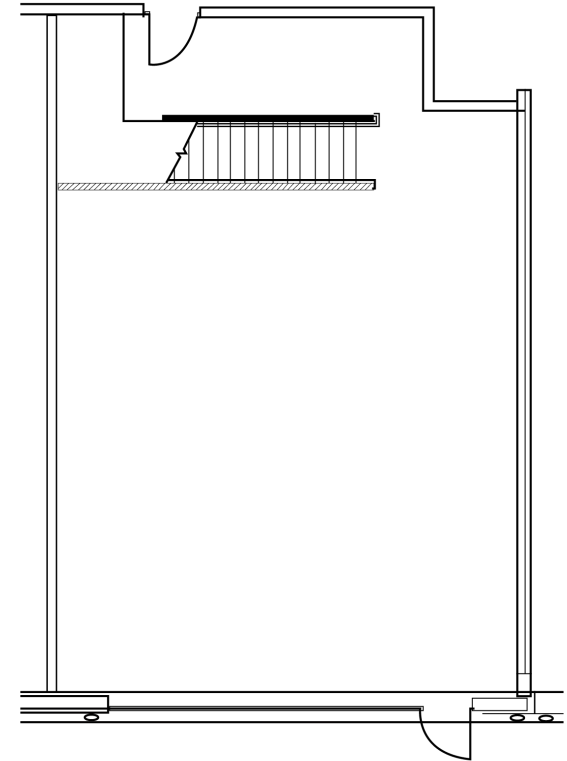
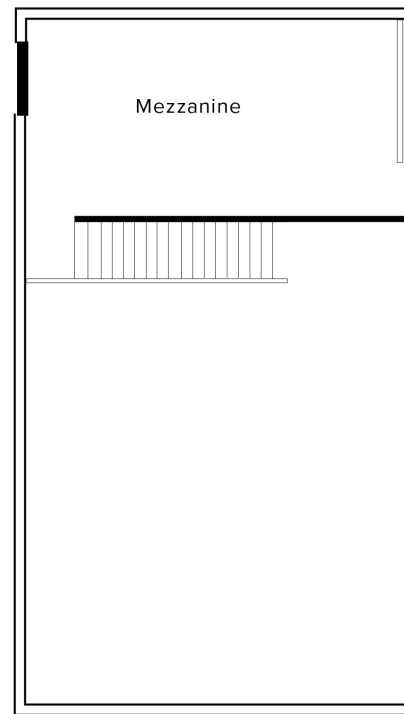
Monument



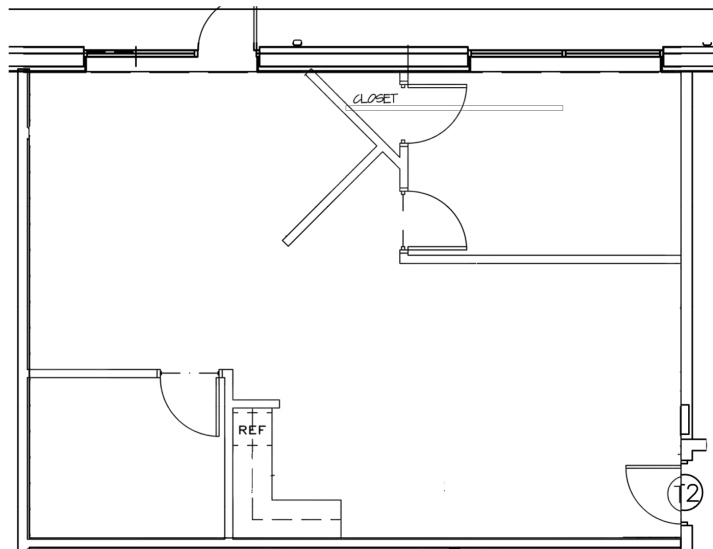
Courtyard



Suite A600 | $\pm 1,095$ SF



Suite A1700 | $\pm 1,789$ SF



Suite A1000 | $\pm 1,054$ SF

Can you see yourself here?

POLLOCK

Katie Sentell

katie@pollockcommercial.com

O| (404) 596.8419 M| (404) 394.9599

pollockcommercial.com

CORFAC
INTERNATIONAL

No warranty or representation, express or implied, is made as to the information contained herein, and the same is submitted subject to errors, omissions, change of price, rental, or other conditions, withdrawal without notice, and to any special listing conditions, imposed by our principals.