



OFFICE SPACE NEAR WESLEY MEDICAL CENTER

FOR SUBLEASE 907 N. HILLSIDE ST., WICHITA, KS 67214

LEASE RATE	Contact Broker
BUILDING SIZE	14,248 SF
LOT SIZE	35,202 SF
YEAR BUILT	1973
PARKING	Surface
ZONING	General Commercial

PROPERTY HIGHLIGHTS

- Rare opportunity to lease premier medical or professional office space directly adjacent to Wesley Medical Center - ideal for healthcare providers seeking proximity to a major hospital hub.
- Previously operated as a plasma donation center, the space offers a functional floorplan that can be easily customized to fit unique operational needs.
- Includes a fully finished basement, ideal for administrative offices, storage, or specialty build-out requirements.
- Features abundant door-side surface parking and prominent signage exposure along heavily traveled Hillside Avenue, enhancing convenience and brand visibility.

DEMOGRAPHICS

	1 MILE	3 MILES	5 MILES
Population	11,977	96,955	223,488
Avg. HH Income	\$62,406	\$63,568	\$68,115
Median Age	36	37	38

TRAFFIC COUNTS

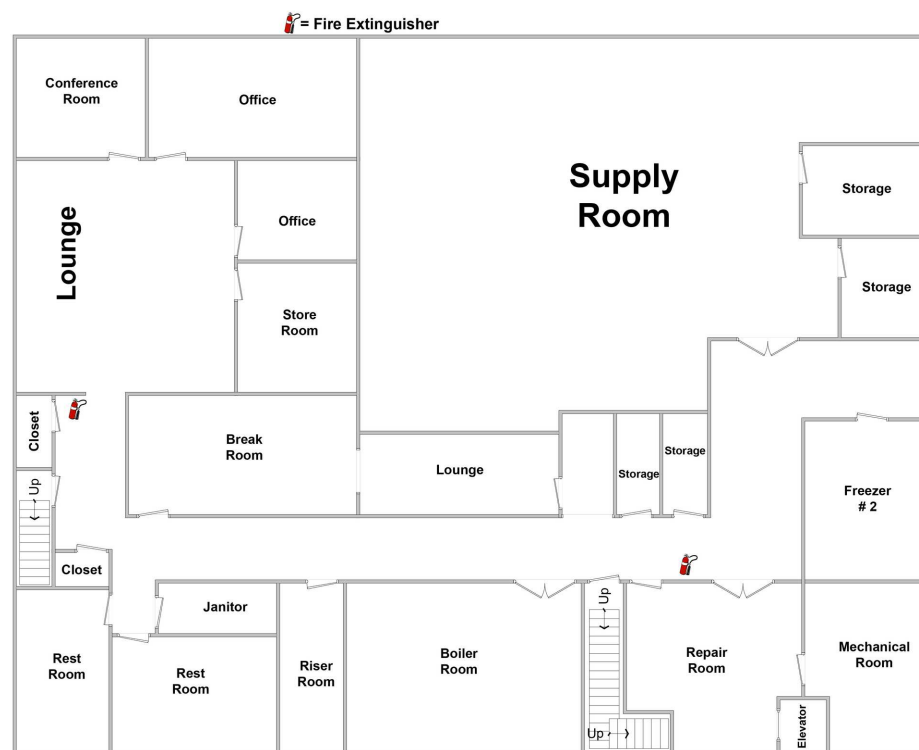
	Along E. Central Ave.	12,560 VPD
	Along N. Hillside St.	17,903 VPD

OFFICE SPACE NEAR WESLEY MEDICAL CENTER

FOR SUBLEASE 907 N. HILLSTREET ST., WICHITA, KS 67214

WEIGAND
COMMERCIAL

FLOOR PLANS



Austin Swisher, CCIM | 316.292.3902 | aswisher@weigand.com

Weigand Real Estate - Commercial
150 N. Market St., Wichita, KS 67202
Weigand.com

OFFICE SPACE NEAR WESLEY MEDICAL CENTER

FOR SUBLEASE 907 N. HILLSIDE ST., WICHITA, KS 67214

WEIGAND
COMMERCIAL

AERIAL VIEW



Austin Swisher, CCIM | 316.292.3902 | aswisher@weigand.com

Weigand Real Estate - Commercial
150 N. Market St., Wichita, KS 67202
Weigand.com