

1.33 ACRES FOR SALE OR GROUND LEASE

6347 GRAND CENTRAL AVENUE, VIENNA, WV



PROPERTY HIGHLIGHTS

- Prime Investment Opportunity in the Parkersburg-Marietta Market Area
- Located Along a Heavily Traveled Corridor
- Approximately 1.33 Acres of Land
- Two Pad Sites Available for Sale or Ground Lease
- Ideal for Retail Development, Quick-Service Restaurants, Medical Office Development
- Suitable for Land Investors or Portfolio Diversification

LOCATION HIGHLIGHTS

- Situated on Grand Central Avenue, a major retail corridor in Vienna, WV
- Just Minutes North of Parkersburg
- High Visibility and Strong Daily Traffic Counts
- Near Major National Retailers: Walmart, Lowe's, Sam's Club, etc.
- Grand Central Avenue is the Main Commercial Artery in the Region
- Attracts Shoppers from the Entire Parkersburg-Marietta Metro Area

FOR MORE
INFORMATION
CONTACT:

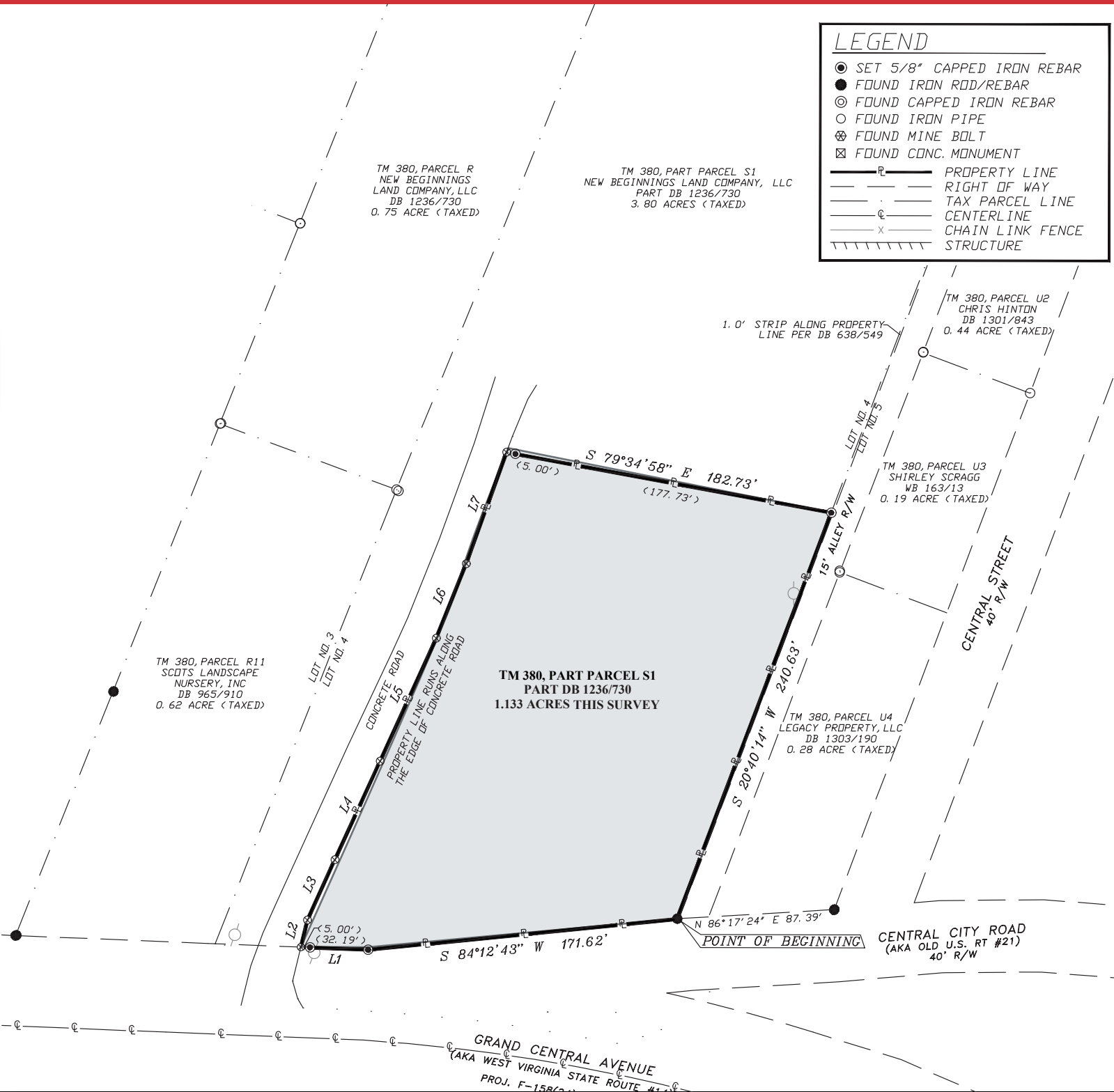
CURT STARR, SIOR
+1 214 316 0737
cstarr@naiburnsscalo.com

NAI Burns Scalo

Brokerage Services
Jim Scalo, Broker

SITE PLAN

6347 GRAND CENTRAL AVENUE, VIENNA, WV



FOR MORE
INFORMATION
CONTACT:

CURT STARR, SIOR
 +1 214 316 0737
 cstarr@naiburnsscalo.com

NAI Burns Scalo
 Brokerage Services
 Jim Scalo, Broker

AMENITIES & DEMOGRAPHICS

6347 GRAND CENTRAL AVENUE, VIENNA, WV



CATEGORY	2 MILES	5 MILES	10 MILES
2024 Population	7,317	30,952	110,532
2024 Households	3,171	13,708	46,810
Avg Household Income	\$102,481	\$80,795	\$76,320
Daytime Employment	3,061	15,203	60,628
Businesses	338	1,860	7,107

FOR MORE
INFORMATION
CONTACT:

CURT STARR, SIOR
+1 214 316 0737
cstarr@naiburnsscalo.com

NAIBurns Scalo

Brokerage Services
Jim Scalo, Broker

No warranty or representation, express or implied, is made as to the accuracy of the information contained herein, and the same is submitted subject to errors, omissions, change of price, rental or other conditions, prior sale, lease or financing, or withdrawal without notice, and of any special listing conditions imposed by our principals no warranties or representations are made as to the condition of the property or any hazards contained therein are any to be implied.