

UNION

Commerce Center

State-of-the-Art
253,318 SF Industrial Property for Lease



UnionCommerceCenter.com
3690 E Union Pacific Avenue, Los Angeles, CA 90023



PROPERTY HIGHLIGHTS

Located in the heart of Central Los Angeles, Union Commerce Center is a modern bulk distribution center totaling 253,318 SF on 11.09 acres with four (4) gated curb cuts. With an ideal location, the property has direct access to both I-5 and I-710 freeways. Union Commerce Center also features convenient access to both the Ports of Los Angeles and Long Beach and can reach all of Southern California in 100 miles or less.



6,800 SF of 2-Story Spec Offices
36' Clear Height
LEED Certified



ESFR K-25 Sprinkler System
50' x 56' Typical Bay Spacing;
2,000 Amps of Power
(expandable to 4,000 Amps)

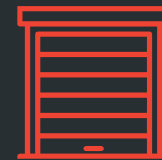


20 Miles from Los Angeles
International Airport (LAX)

25 Miles to Ports of Los
Angeles & Long Beach



253,318 Square Feet
11.09 Acres

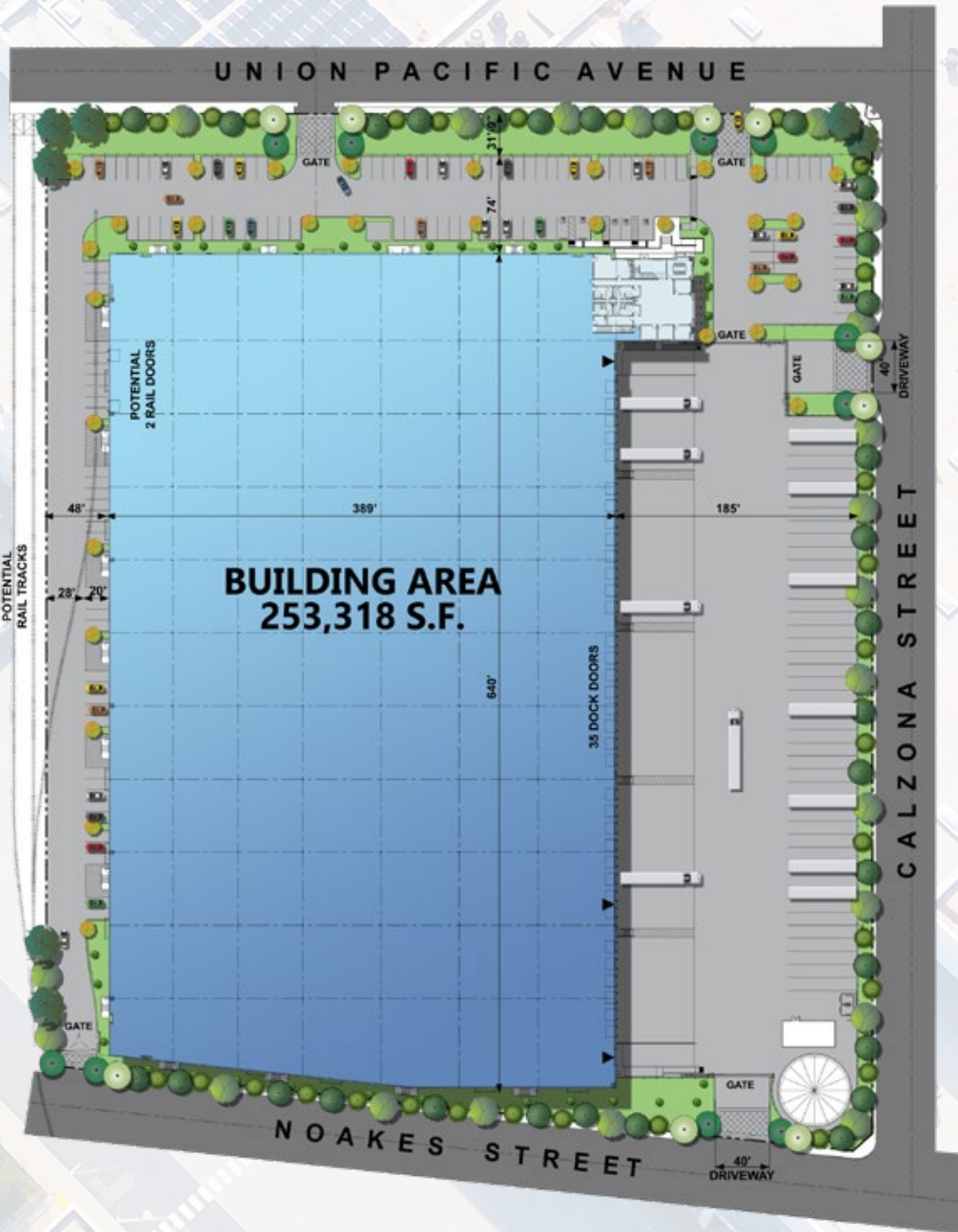


35 Dock High Doors
2 Oversized Grade Level Doors
Rail Loading Possible

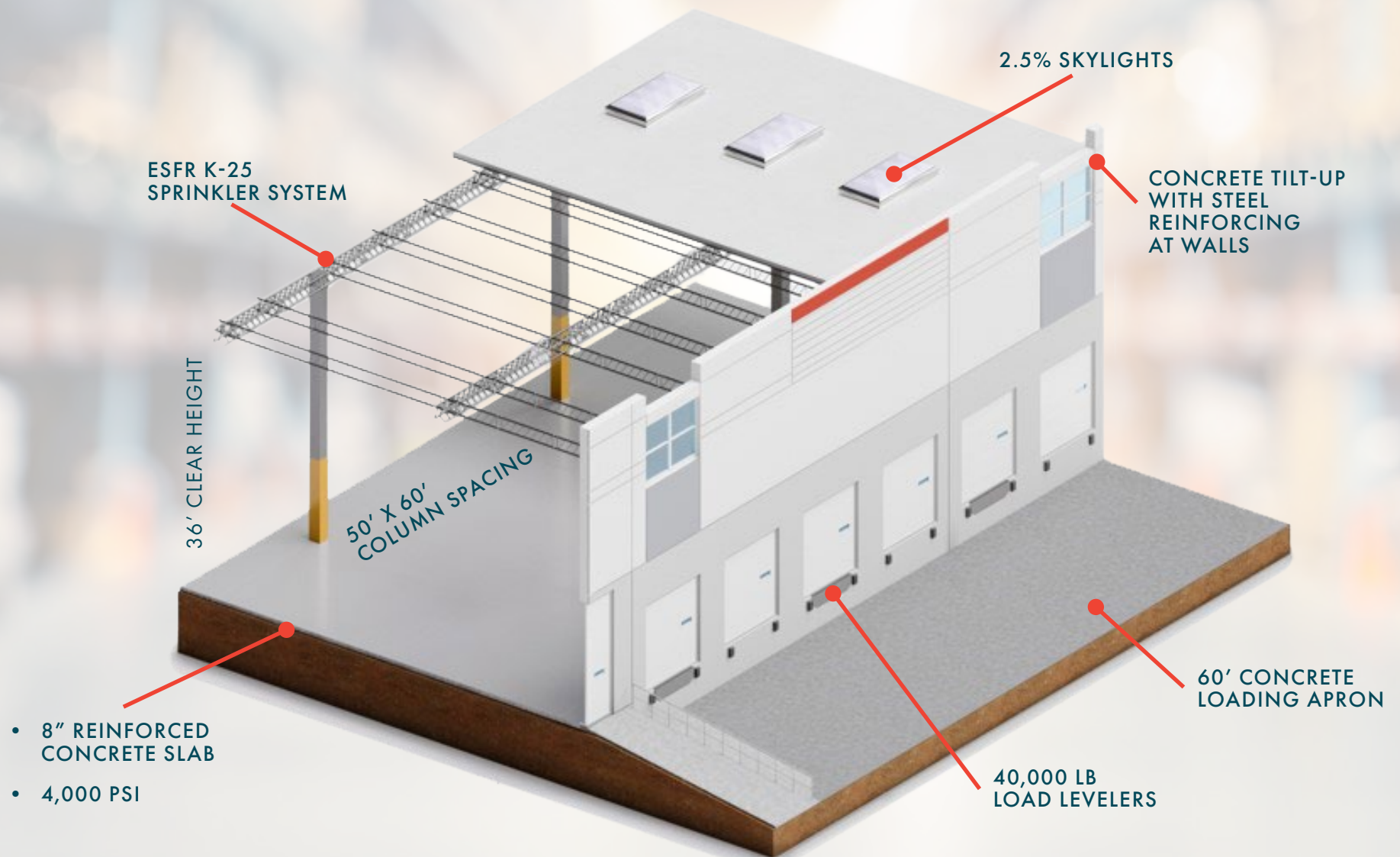


41 Trailer Parking Stalls
185' Secured Truck Court

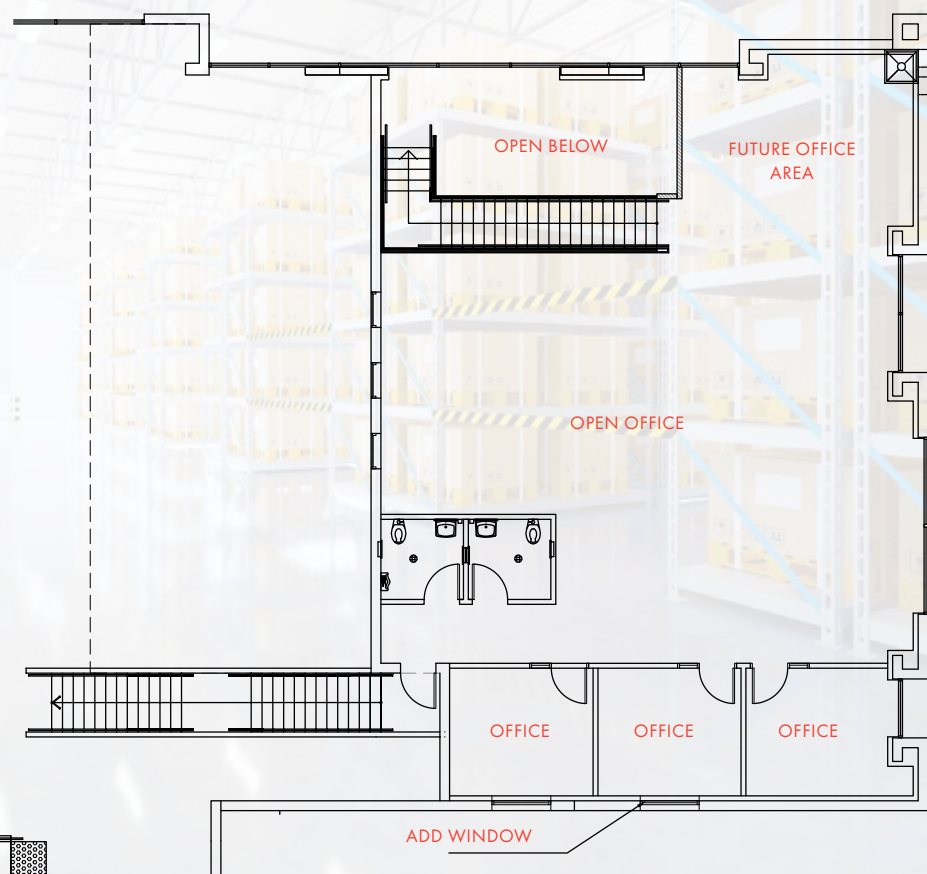
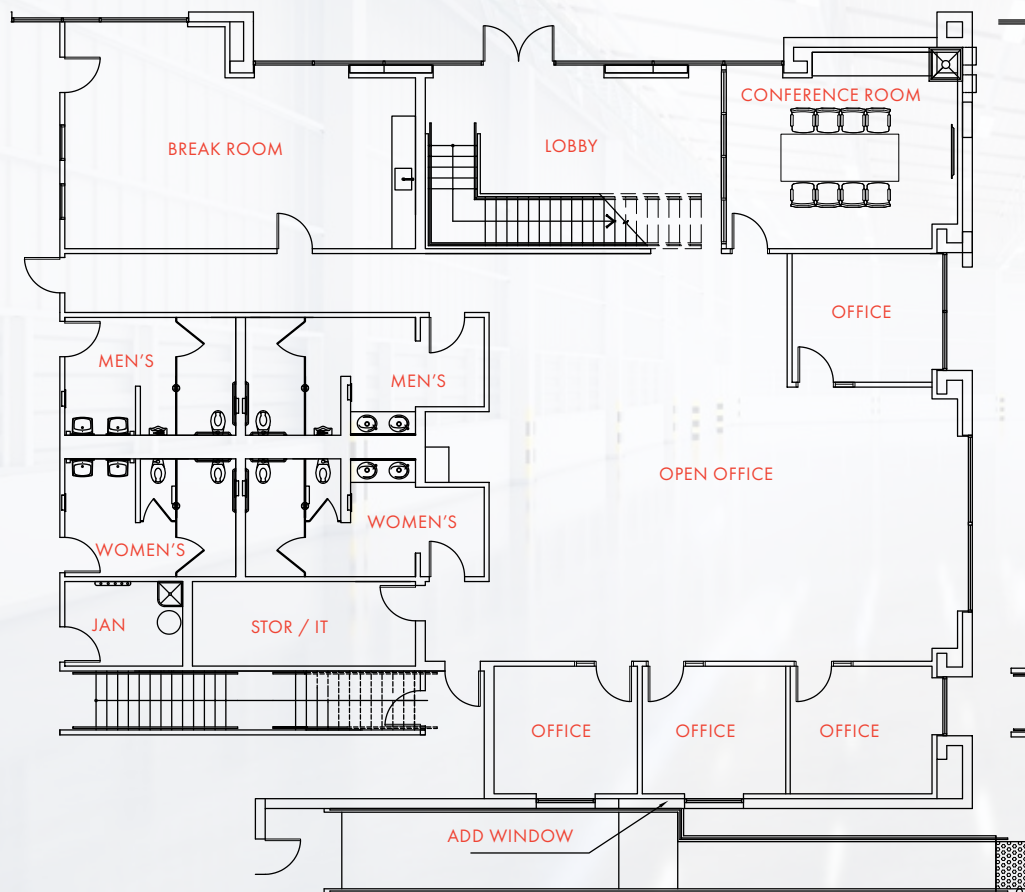
SITE PLAN



3D OVERVIEW



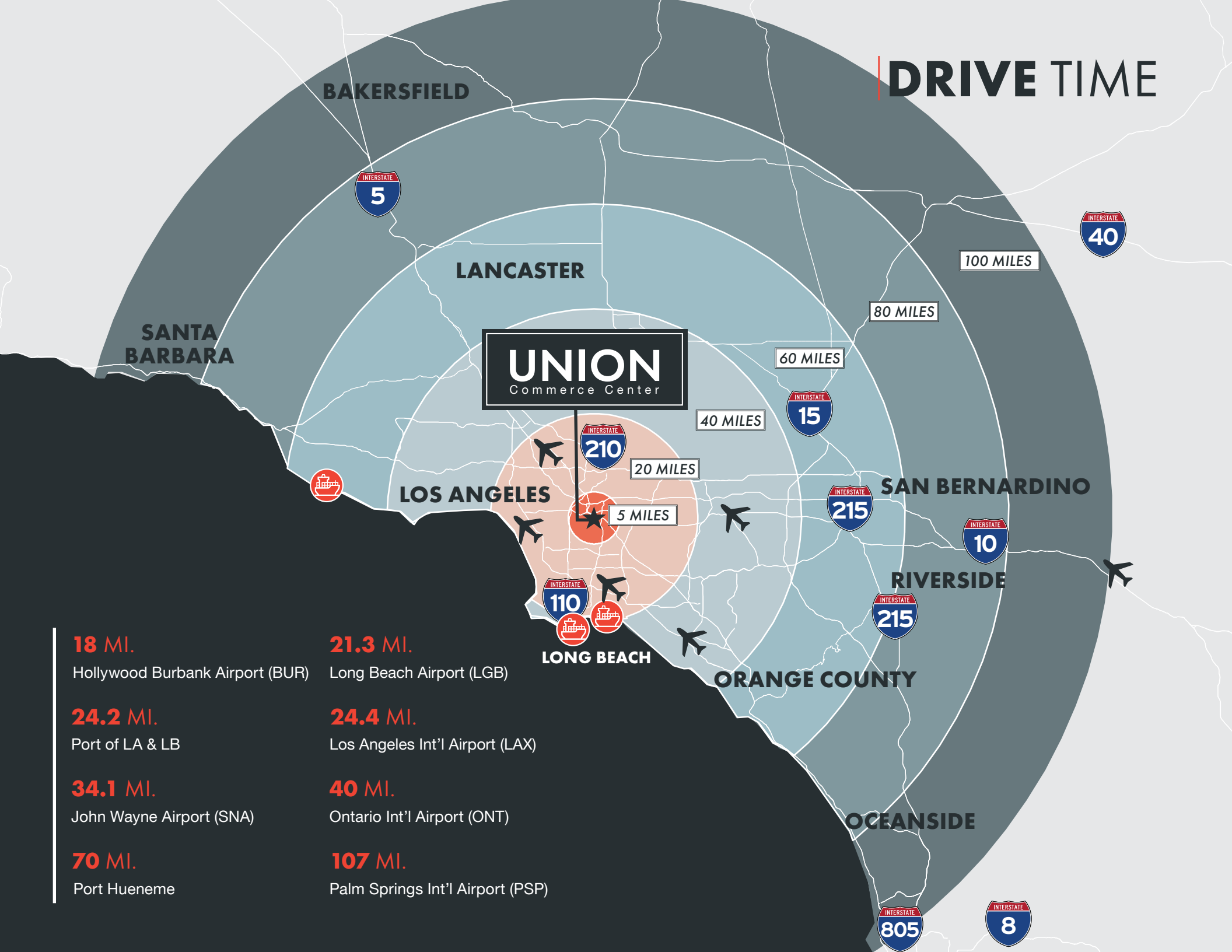
OFFICE FLOOR PLAN





LOCATION / ACCESS

DRIVE TIME



18 MI.

Hollywood Burbank Airport (BUR)

24.2 MI.

Port of LA & LB

34.1 MI.

John Wayne Airport (SNA)

70 MI.

Port Hueneme

21.3 MI.

Long Beach Airport (LGB)

24.4 MI.

Los Angeles Int'l Airport (LAX)

40 MI.

Ontario Int'l Airport (ONT)

107 MI.

Palm Springs Int'l Airport (PSP)



CORPORATE NEIGHBORS



UNION

Commerce Center

UNION

Commerce Center

For more information or to
schedule a private tour, contact:

JOHN MINERVINI

Vice Chairman

213.955.6459

john.minervini@cushwake.com

LIC #00900514

ERIK LARSON

Executive Managing Director

213.955.5126

erik.larson@cushwake.com

LIC #01213790

CHRIS TOLLES

Executive Managing Director

213.955.5129

chris.tolles@cushwake.com

LIC #01459899

PAUL SIMS

Director

213.955.5153

paul.sims@cushwake.com

LIC #02007631

UnionCommerceCenter.com

3690 E Union Pacific Avenue, Los Angeles, CA 90023



©2024 Cushman & Wakefield. All rights reserved. The information contained in this communication is strictly confidential. This information has been obtained from sources believed to be reliable but has not been verified. NO WARRANTY OR REPRESENTATION, EXPRESS OR IMPLIED, IS MADE AS TO THE CONDITION OF THE PROPERTY (OR PROPERTIES) REFERENCED HEREIN OR AS TO THE ACCURACY OR COMPLETENESS OF THE INFORMATION CONTAINED HEREIN, AND SAME IS SUBMITTED SUBJECT TO ERRORS, OMISSIONS, CHANGE OF PRICE, RENTAL OR OTHER CONDITIONS, WITHDRAWAL WITHOUT NOTICE, AND TO ANY SPECIAL LISTING CONDITIONS IMPOSED BY THE PROPERTY OWNER(S). ANY PROJECTIONS, OPINIONS OR ESTIMATES ARE SUBJECT TO UNCERTAINTY AND DO NOT SIGNIFY CURRENT OR FUTURE PROPERTY PERFORMANCE. COE-PM-West-12.6.2023