

MEDICAL OFFICE

For Lease

200 N Bryant Ave, Edmond, OK



TRIC

EXCLUSIVELY LISTED BY

Jonathan Thompson

Partner

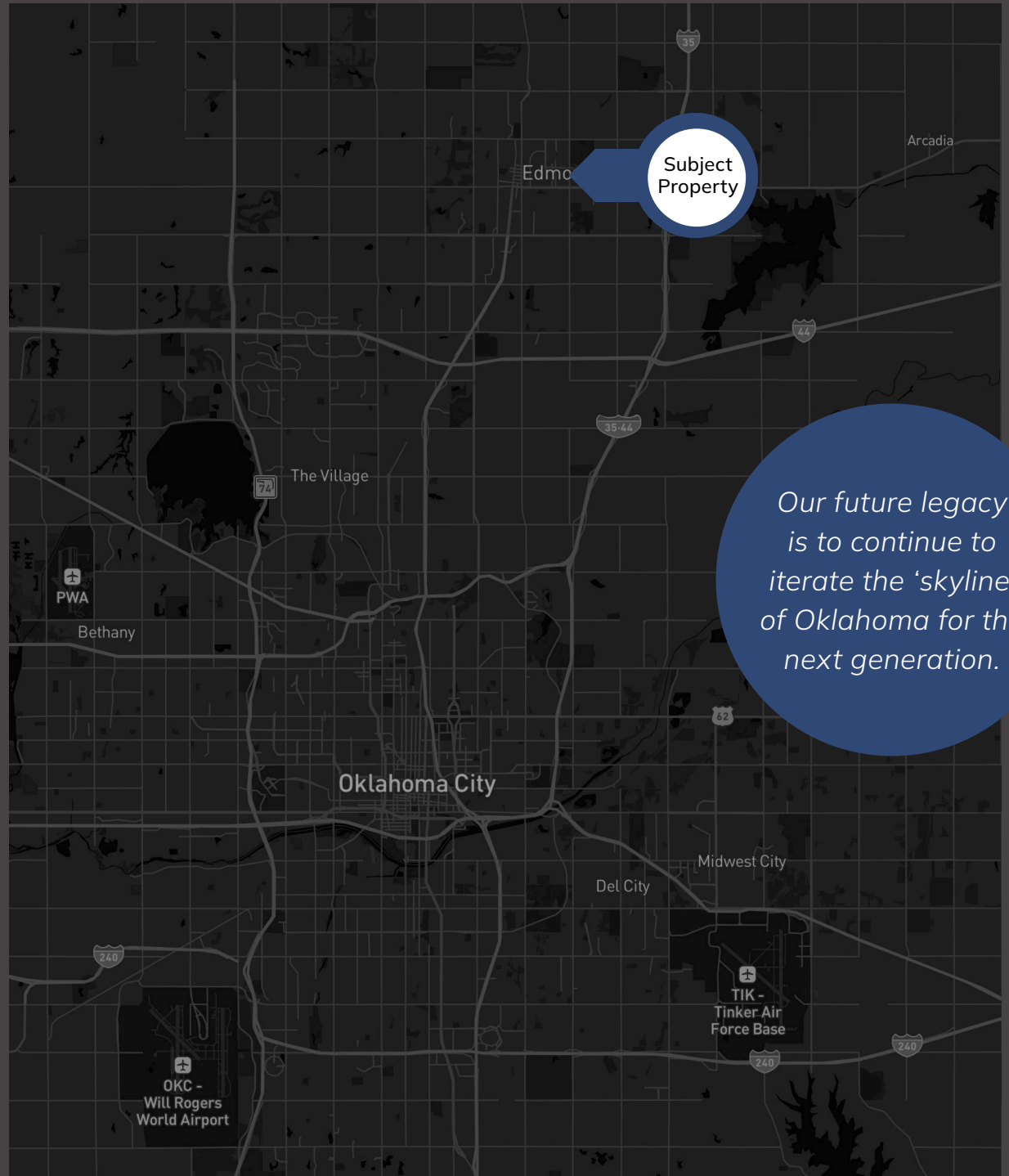
(405) 406-4045

JThompson@TrioCRE.com



3856 S. Boulevard, Suite 240
Edmond, OK 73013

www.TrioCRE.com



PROPERTY HIGHLIGHTS



Suite 100
2,942 SF

Suite 130
2,425 SF

**Immediate
Plug-and-Play
Offices Ready**

Premium Location

Situated in Edmond, with easy access to major routes, enhancing visibility and accessibility for patients and staff.

Modern Medical Suites

Configurable office spaces designed specifically for healthcare providers, with flexible layouts to suit various medical practices.

Ample Parking

Generous on-site parking ensures convenience for patients and staff, enhancing the overall experience.

State-of-the-Art Building Systems

Equipped with advanced facilities, supporting a comfortable and efficient medical environment.

Flexible Leasing Options

Lease terms that cater to the unique and evolving needs of healthcare tenants.

Proximity to Edmond and OKC Metro

Positioned strategically to serve the Edmond community while being easily accessible from Oklahoma City metro areas, expanding reach and growth potential.

PROPERTY OVERVIEW

Located in a high-visibility area, 200 N. Bryant offers premium medical office space tailored to meet the needs of healthcare providers and medical specialists. The property features modern suites that are adaptable to various medical configurations, making it an ideal choice for doctors, clinics, and other healthcare facilities. Tenants benefit from an easily accessible location with ample on-site parking, ensuring convenience for both patients and staff.



Strategic Location

Next to Bryant Square, OU Medical, Integris Hospital & Mercy Hospital

Ample Parking & Access

24/7 keycard access for tenant convenience and after-hours patient visits

Abundant Natural Light

Diverse Tenant Mix

Includes healthcare providers offering Primary Care, Metabolic Control, Hearing Care, Physical Therapy, and Lab Space

No Hospital Use Restrictions

Allowing for versatile medical and general office use

This medical office space in Edmond boasts state-of-the-art facilities and comprehensive building systems that prioritize comfort and efficiency. Positioned near major routes, it provides quick access to the surrounding Edmond and Oklahoma City metro areas, fostering an expanded client reach for practices looking to grow. Lease options are designed to be flexible, accommodating the evolving needs of healthcare tenants. Secure a position in one of Edmond's most desirable medical office locations and elevate your practice at 200 N. Bryant.

AERIAL MAP



Edmond, one of the fastest-growing cities in Oklahoma, is an ideal location for high-end medical use. The city's thriving economy, coupled with its strong healthcare infrastructure, makes it a prime market for medical providers seeking to expand their footprint.

200 N. Bryant is located just minutes from top medical centers like OU Medical Center, Integris Hospital, and Mercy Hospital.

University of Central Oklahoma

OU Health Edmond Medical Center

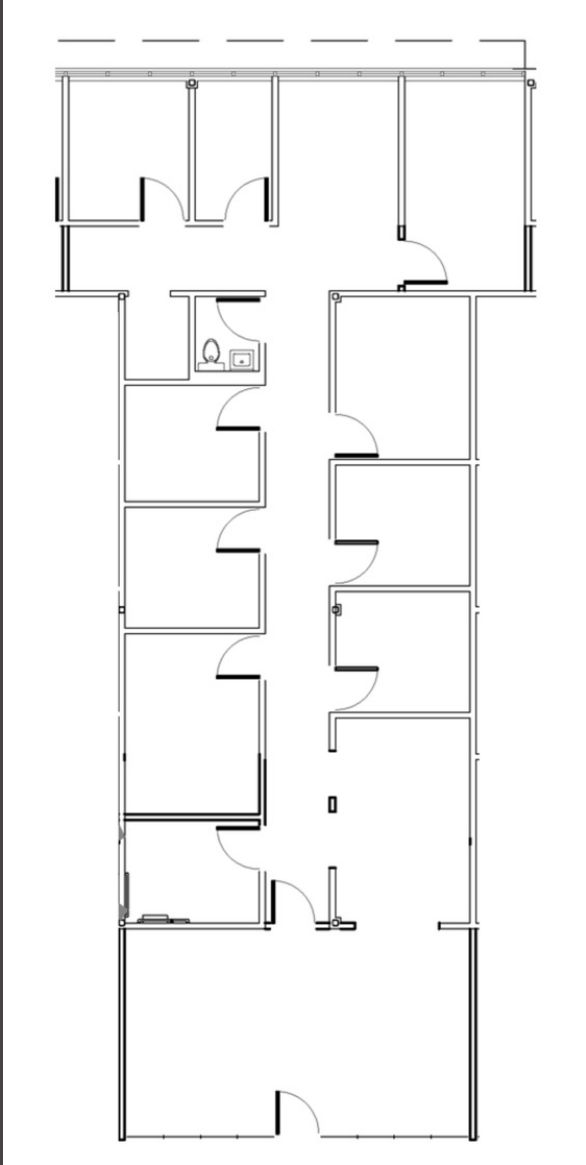
Subject Property

FLOOR PLANS

SUITE 130: 2,425 SF



SUITE 100: 2,942 SF



PROPERTY PHOTOS



EXCLUSIVELY
LISTED BY

Jonathan Thompson

Partner

(405) 406-4045

JThompson@TrioCRE.com



3856 S. Boulevard, Suite 240
Edmond, OK 73013

www.TrioCRE.com



Scan for More