



**FERGUSON**  
PROPERTIES

**EPOCH**  
DEVELOPMENTS

## 908 BALTIMORE *(La Rue Building)* Downtown Kansas City, MO

**UP TO 19,512 SF OF OFFICE SPACE  
AVAILABLE FOR LEASE**

ASKING \$16 psf FSG

DEMOGRAPHICS	1 MILE	2 MILES	3 MILES
2020 Population	11,800	29,351	80,415
Total Employees	87,599	129,048	181,475
Total Businesses	3,045	5,053	8,577

- Newly Renovated Iconic Historic Building available for lease in highly-sought after Library District of downtown Kansas City
- Mildred's Coffee now open on ground floor of building; Right next door to Milwaukee Deli and Banksia Coffee and Bakery Shop
- Walking distance to new streetcar stop, numerous hotels, Power & Light Entertainment District, Crossroads District, River Market, and Sprint Center
- Parking garage spaces available directly across the street

**CONTACT  
US TODAY**

**JORDAN ZENGER**

Vice President  
913.558.5183  
jzenger@fergprop.com

**COLLEEN BRADBURY**

Sales Associate  
913.277.9445  
cbradbury@fergprop.com

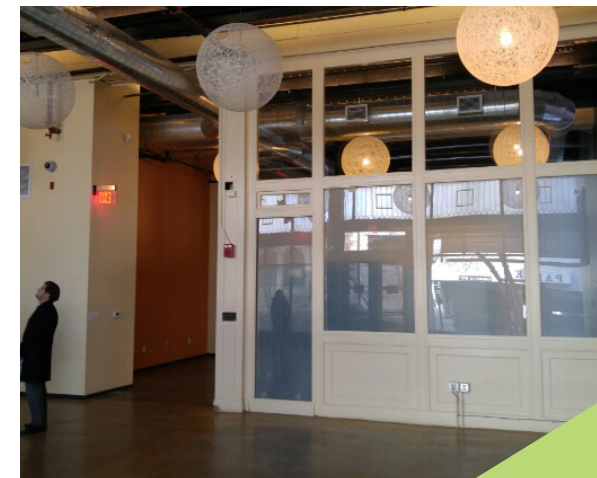
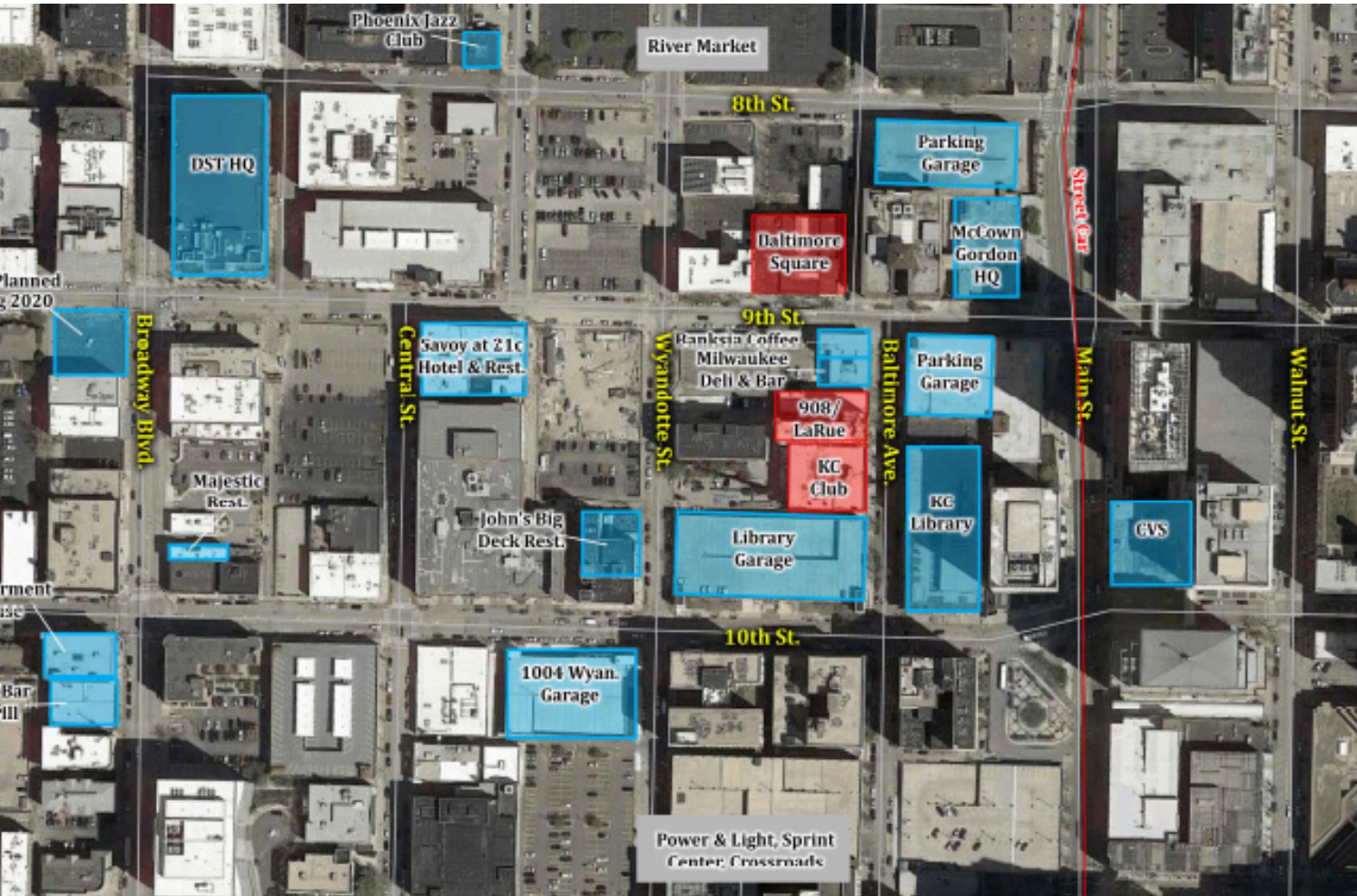




**FERGUSON**  
PROPERTIES

**EPOCH**  
DEVELOPMENTS

## 908 BALTIMORE BUILDING



**CONTACT US TODAY**

**JORDAN ZENGER**, Vice President  
913.558.5183 | [jzenger@fergprop.com](mailto:jzenger@fergprop.com)

**COLLEEN BRADBURY**, Sales Associate  
913.277.9445 | [cbradbury@fergprop.com](mailto:cbradbury@fergprop.com)



**FERGUSON**  
PROPERTIES

**EPOCH**  
DEVELOPMENTS

**908 BALTIMORE BUILDING**



**CONTACT US TODAY**

**JORDAN ZENGER**, Vice President  
913.558.5183 | [jzenger@fergprop.com](mailto:jzenger@fergprop.com)

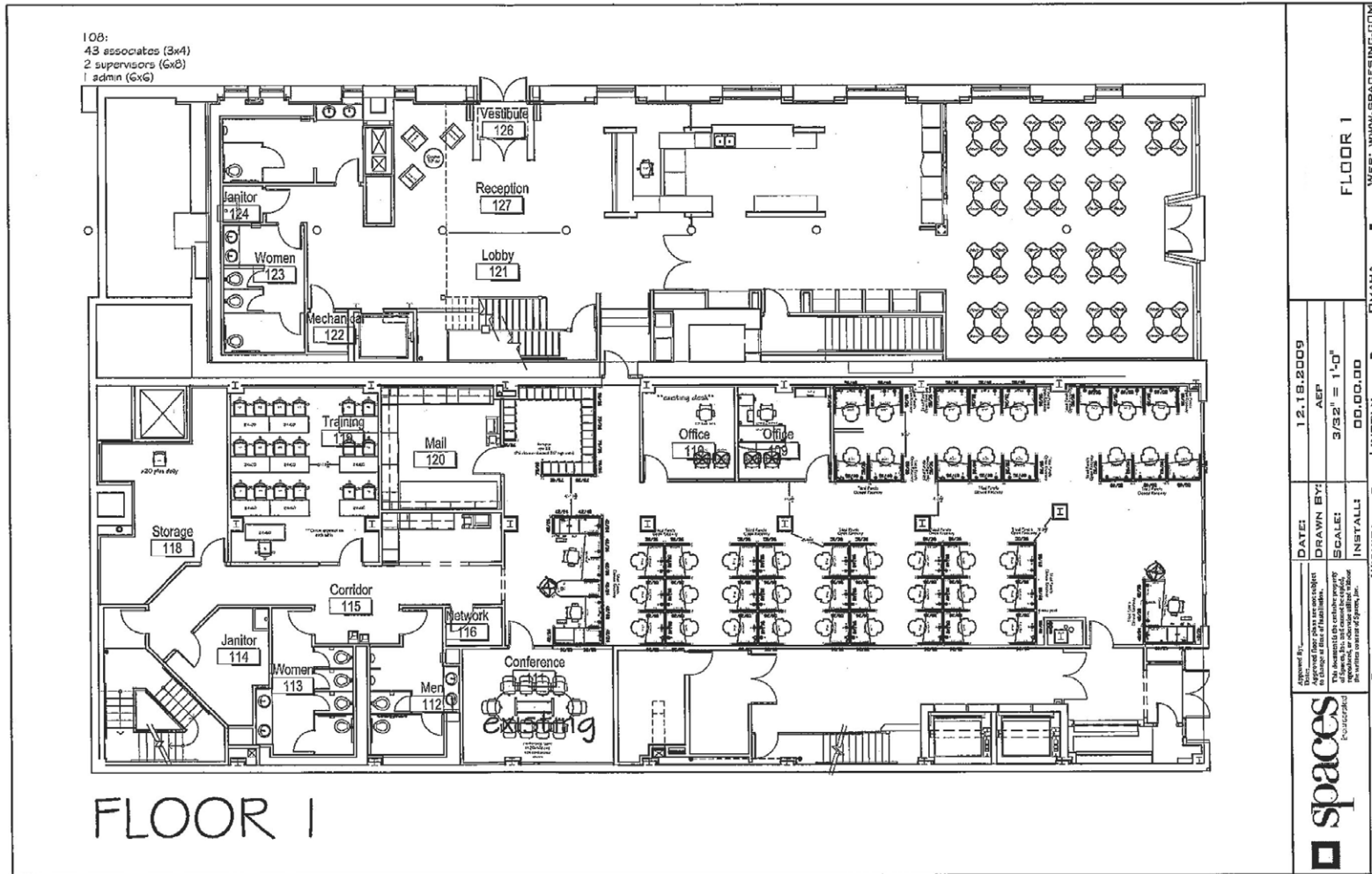
**COLLEEN BRADBURY**, Sales Associate  
913.277.9445 | [cbradbury@fergprop.com](mailto:cbradbury@fergprop.com)



**FERGUSON**  
PROPERTIES

**EPOCH**  
DEVELOPMENTS

**908 BALTIMORE BUILDING**



**CONTACT US TODAY**

**JORDAN ZENGER**, Vice President  
913.558.5183 | jzenger@fergprop.com

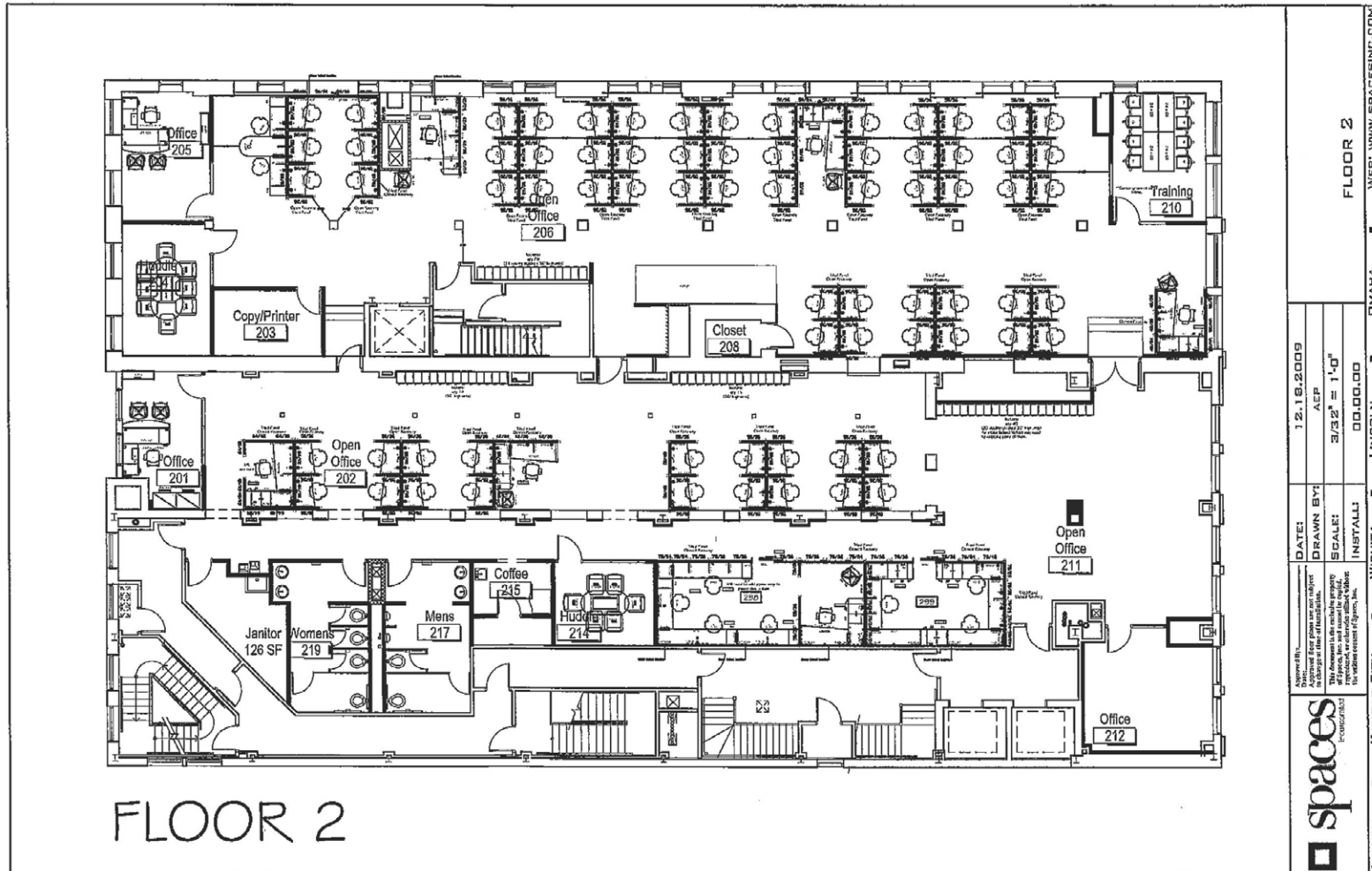
**COLLEEN BRADBURY**, Sales Associate  
913.277.9445 | cbradbury@fergprop.com



**FERGUSON**  
PROPERTIES

**EPOCH**  
DEVELOPMENTS

**908 BALTIMORE BUILDING**



DATE: 12.16.2009		DRAWN BY: ACP		SCALE: 3/32" = 1'-0"		INSTALL: 00.00.00		FLOOR 2		WEB: WWW.SPACESINC.COM	
DRAWN BY: ACP		SCALE: 3/32" = 1'-0"		INSTALL: 00.00.00		FLOOR 2		WEB: WWW.SPACESINC.COM		LENEKA	
KANSAS CITY		WICHITA		LINCOLN		OMAHA					

**CONTACT US TODAY**

**JORDAN ZENGER**, Vice President  
913.558.5183 | jzenger@fergprop.com

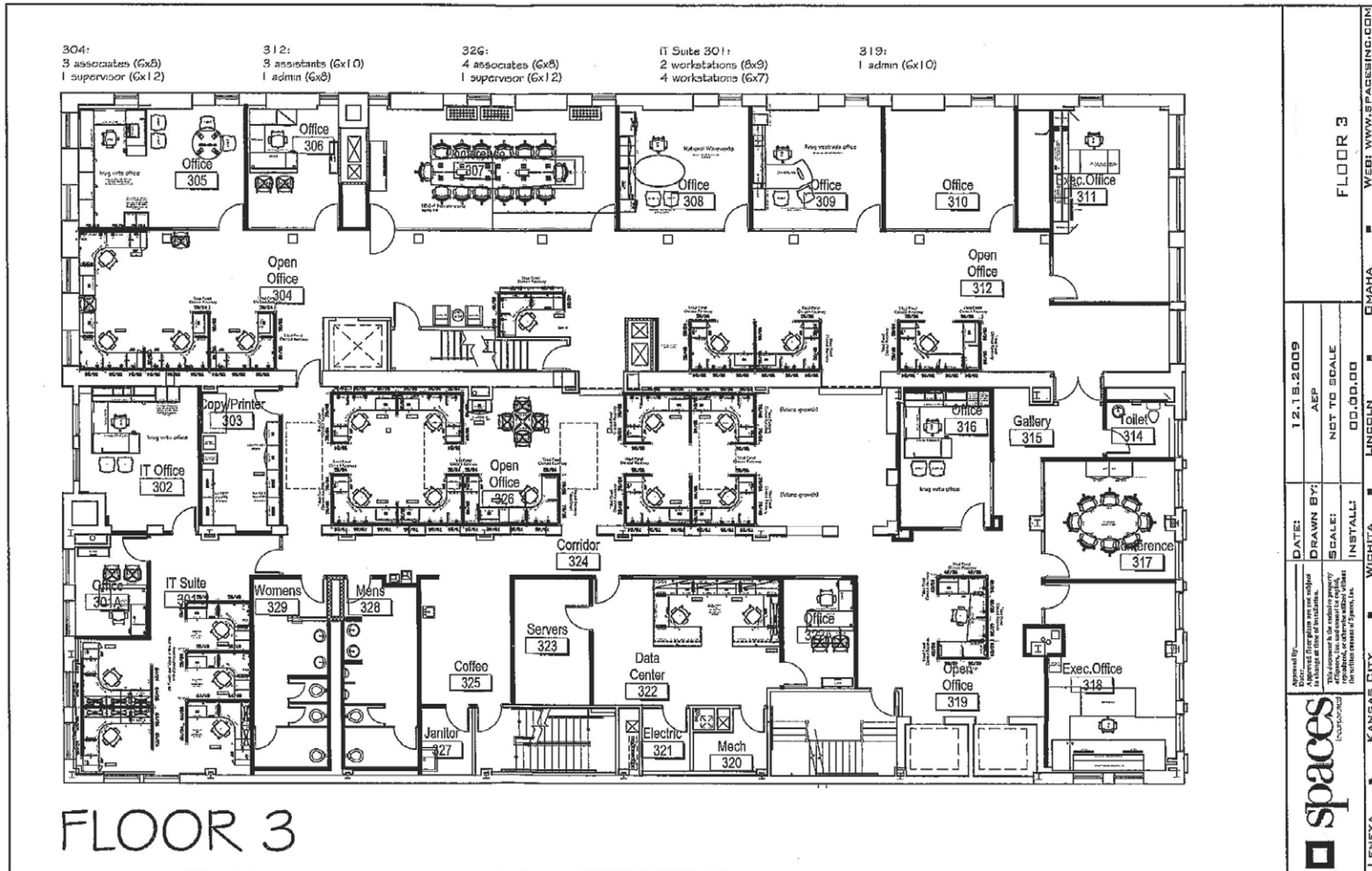
**COLLEEN BRADBURY**, Sales Associate  
913.277.9445 | cbradbury@fergprop.com



**FERGUSON**  
PROPERTIES

**EPOCH**  
DEVELOPMENTS

**908 BALTIMORE BUILDING**



**CONTACT US TODAY**

**JORDAN ZENGER**, Vice President  
913.558.5183 | jzenger@fergprop.com

**COLLEEN BRADBURY**, Sales Associate  
913.277.9445 | cbradbury@fergprop.com