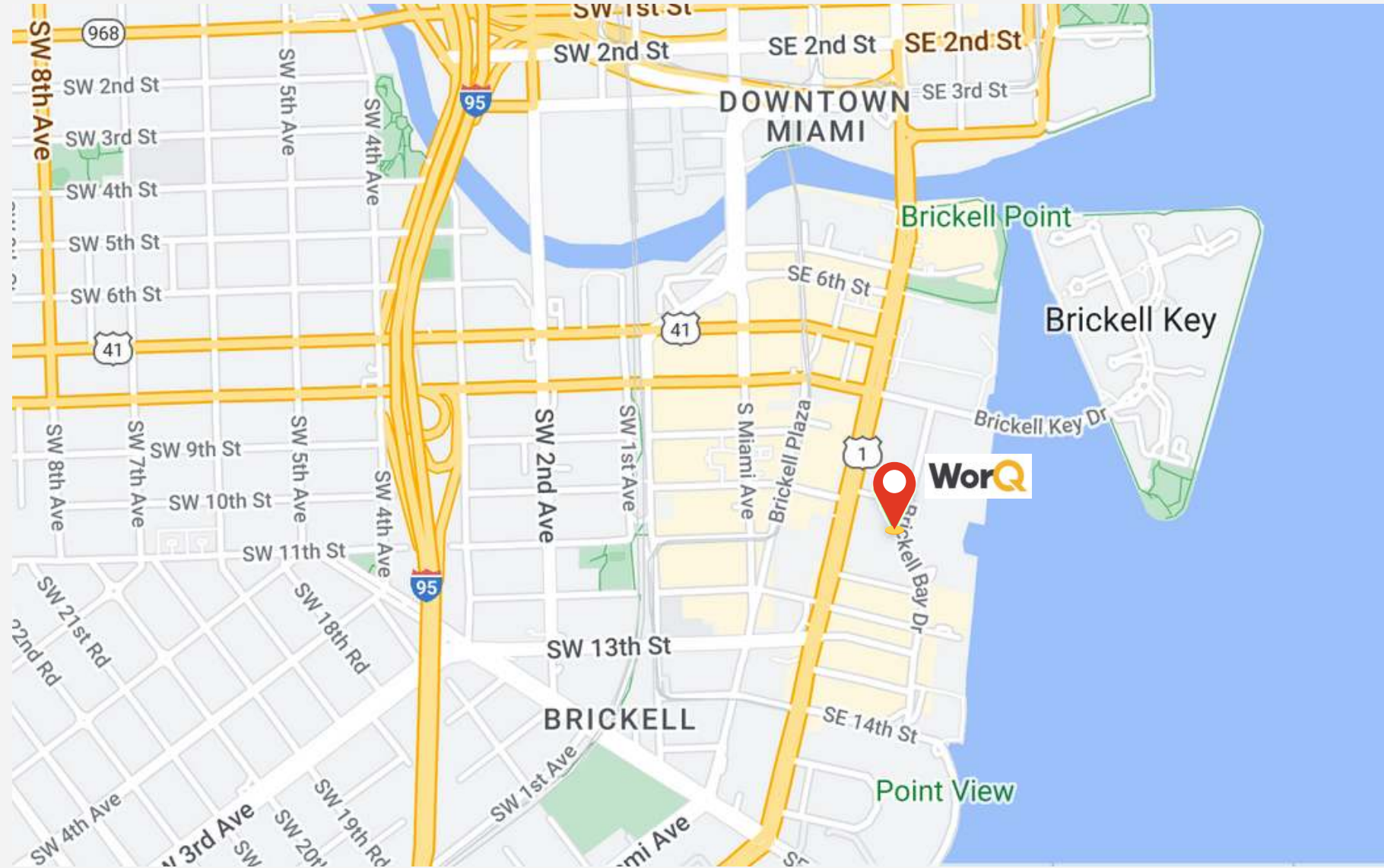




# WorkQ

**1100 Brickell Bay Dr, Miami, FL 33131**  
**Suite 1600**

# LOCATION



## Food and Drinks

- Casa Tua
- Nusret
- Komodo
- Divine
- Starbucks
- Chipotle
- more....

## Banks, Hotels and Entertainment

- TD Bank.
- Hyatt
- Regions bank
- HSBC
- Chase
- Wells Fargo
- Bank of America
- Marriott
- Brickell City Centre
- Mary Brickell Village

## Transportation

- Metro/Subway
- Public Transportation
- Taxis
- Valet Parking

The best of  
Brickell within  
walking distance

---

Transportation options available in Miami include Tenth Street/Promenade, located 0.2 miles from Panorama Tower. Panorama Tower is near Miami International, located 12.6 miles or 25 minutes away, and Fort Lauderdale-Hollywood International, located 24.4 miles or 36 minutes away.

# WorQ

## Panorama Tower

---

85

Story building in Brickell

1

Exclusive floor for WorQ

24,500

Square feet of WorQ



Tallest  
building in  
South Florida.

---

---

### About the Building

Rising above the shore of world-renowned Biscayne Bay, Panorama is the newest and tallest residential tower south of Miami. Panorama also features the largest apartments, the best finishes and appliances, and the most amenities in Miami—over 100,000 square feet of restaurants, lounges, and pools, as well as cutting-edge fitness, lifestyle and community facilities—all at the center of Brickell.



P  
A  
N  
O  
R  
A  
M  
A

# About WorQ?

At WorQ, we have innovated the way of providing leasing services to multinationals and companies, through practical solutions that lead our clients to be in a modern place, with exclusive and corporate spaces, which will provide the best experience in terms of services to the entire team work reducing the operating cost of their companies.







*16th Floor Plan*

**24,500 SqFt**

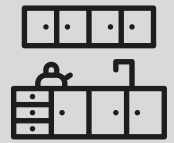
**Enterprise Offices**

**6 Meeting Rooms**

**3 Phone Booths**



# We have got you covered



**Kitchen & Lounges**



**Unlimited maintenance**



**Event spaces**



**WorQ mobile app**



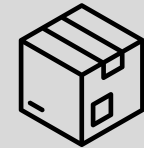
**CCTV Surveillance**



**Flexible contracts**



**Ultra-fast Wi-Fi**



**Mail & Package Handling**



**Access control**



**Cleaning services**



**Receptionist**



**24/7 Access**



**Coffee & Refreshments**



**Fully furnished spaces**



**Printing**



**Share Meeting rooms**



**IT Support**



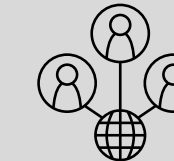
**Phone-booths**



**Guest registration system**



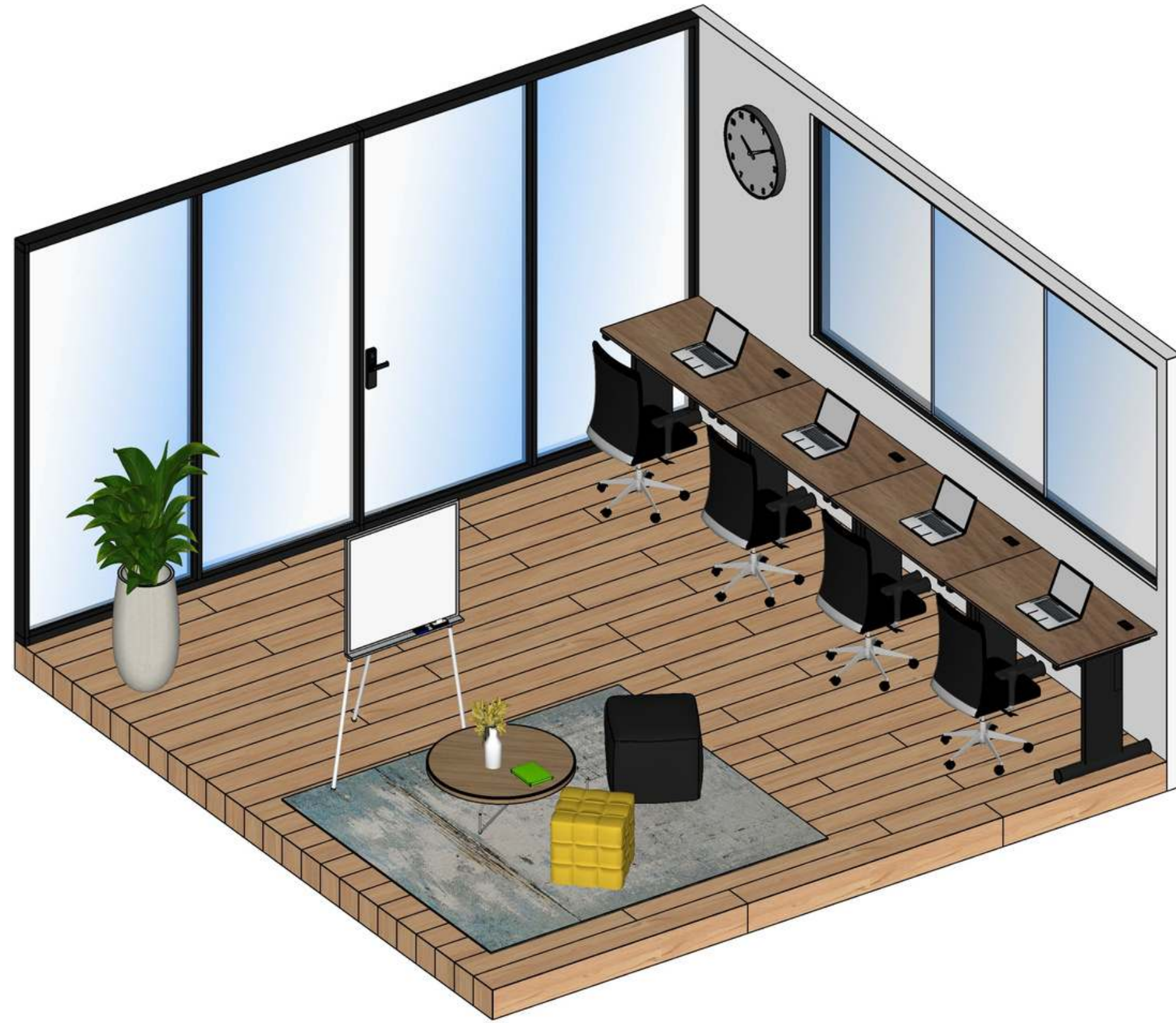
**Mother's room**



**Weekly networking events**



# Standard Office



# Medium Size Office



# Enterprise Office



# Office Renderings: Common area



# Office Renderings: Common area



# Office Renderings: Common area



# Office Renderings: Enterprise Office



# Clients who trust WorQ

---







*Let's Talk*

**David Lopez**

Community Manager

305-432-8873

[info@worqcoworking.com](mailto:info@worqcoworking.com)

1100 Brickell Bay Dr, Miami, FL 33131  
Suite 1600

