

# 901 FIFTH

41 Stories. You could be one.



 **VANBARTON**  
GROUP

[9015thAvenue.com](http://9015thAvenue.com)



Views of Downtown Seattle and Elliott Bay

## BUILDING FEATURES

- + LEED Platinum building
- + State-of-the-art fitness center  
[view tour](#)
- + Secure bike storage and building showers  
[view tour](#)
- + Remodeled 4th & 5th Ave lobbies with concierge service  
[view 4th Ave](#) [view 5th Ave](#)
- + Renovated 65 person conference center in the 5th Avenue lobby plus new executive boardrooms on floor 27  
[view conference center](#) [view boardrooms](#)
- + Ingress and egress off both Marion St. and Madison St. to the building parking garage



Renovated Lobby



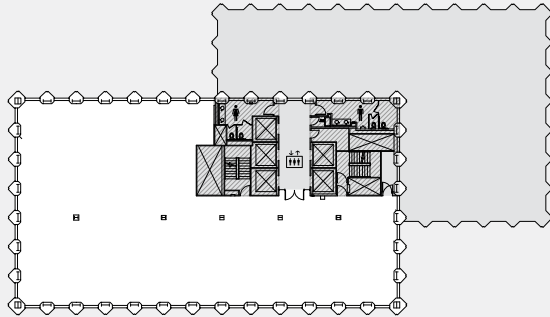
Building Conference Room



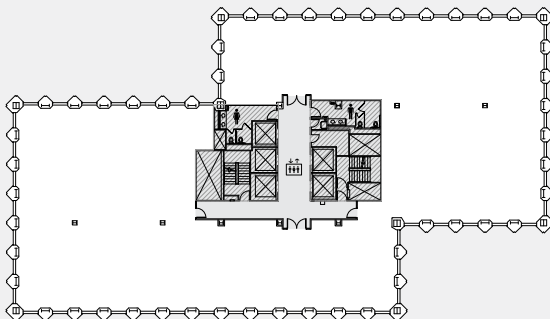
Building Fitness Center

# PLANS

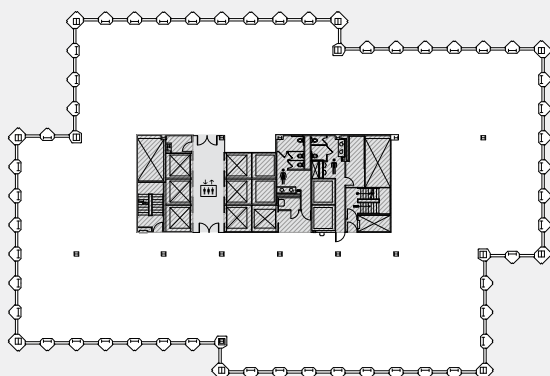
901 Fifth delivers on the promise of state-of-the-art infrastructure with 540,000+ square feet of open and efficient floor plans.



**FLOORS 38-41**  
**8,339 SF**



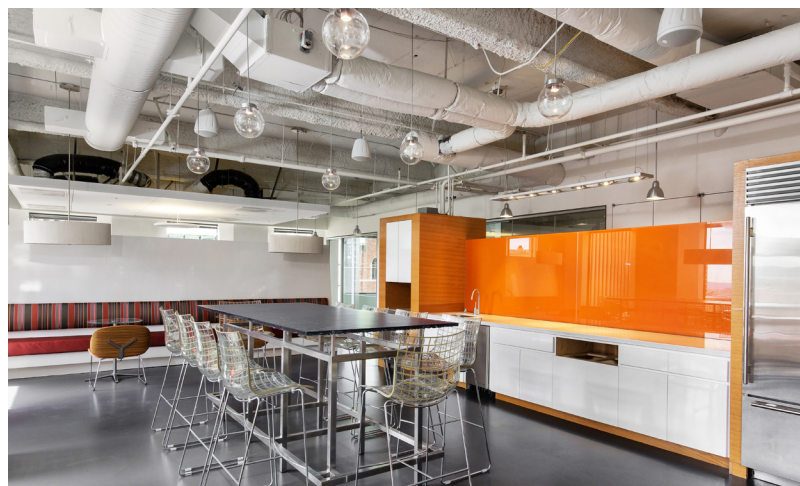
**FLOORS 27-37**  
**13,786 SF**



**FLOORS 6-24**  
**17,428 SF**



## TENANT SPACES





North facing views

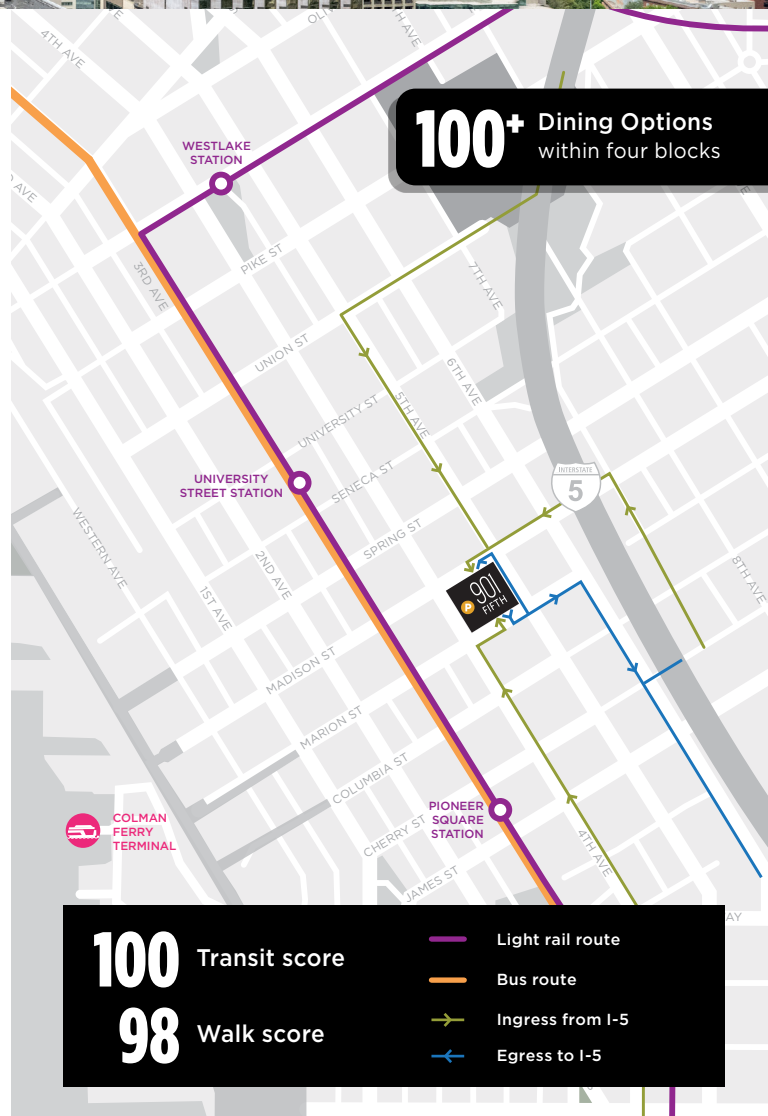
## PREMIER LOCATION

- + One block from I-5 with easy access to both northbound and southbound lanes
- + Close proximity to ferries, light rail and mass transit
- + Surrounded by a wide variety of Seattle's finest restaurants and easy grab & go dining options

## FIND YOUR SPACE



South facing views of Pioneer Square & SoDo



EXCLUSIVELY OFFERED BY:



**LLOYD LOW**  
+1 206 607 1796  
lloyd.low@jll.com

**JOE GOWAN**  
+1 206 607 1738  
joe.gowan@jll.com

