



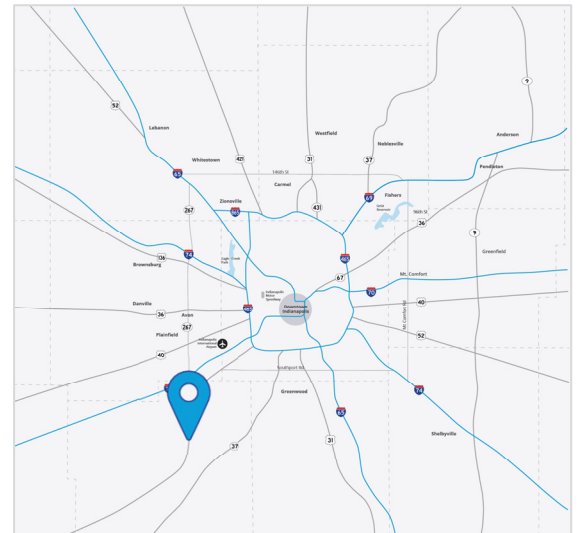
For Sale

±54.22 AC Development Opportunity in Mooresville

1357 S Old State Road 67 Mooresville, IN

Property Highlights

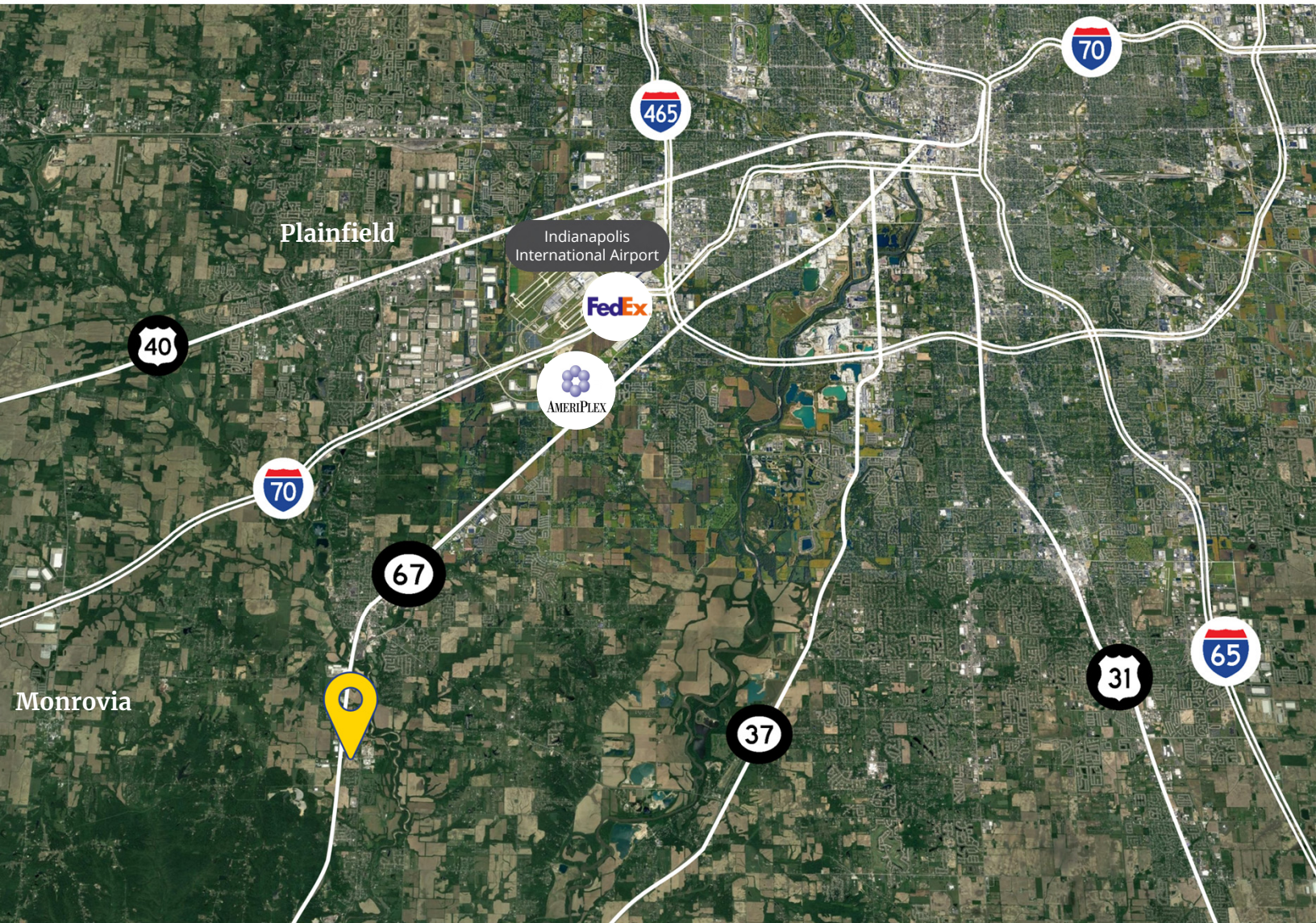
- ±54.22 Acres situated on signalized intersection of SR67 and Old 67 South
- Zoned B-2 (City of Mooresville)
- Adjacent to Flagstaff Business Park with neighbors including PacMoore, General Shale Brick, Harris Rebar and Sun Polymers
- Average Daily Traffic on SR 67: 17,492 cars/day
- Asking Price: \$2,976,678 (\$54,900 per acre)



Jason Speckman SIOR
+1 317 713 2155
jason.speckman@colliers.com

Stephen Daum
+1 317 713 2144
stephen.daum@colliers.com

Colliers Indianapolis
colliers.com



Phenomenal access to Indy's Interstate System



11.8 mi



12.3 mi



20.8 mi



24.7 mi



20.9 mi
Downtown

40⁺

major cities within
an 8-hour drive

75%

U.S. + Canada
population within
a 1-day drive

4

international
airports statewide

#1

IND – Best Airport
in North America

Jason Speckman SIOR
+1 317 713 2155
jason.speckman@colliers.com

Stephen Daum
+1 317 713 2144
stephen.daum@colliers.com

