



Port Commons - Port Washington, NY
1029 Port Washington Boulevard
4,266 SF (Divisible) | Second Generation Restaurant Available

RIPCO
REAL ESTATE

2nd Generation Restaurant



Downtown Port Washington



PAUL D SCHREIBER
SENIOR HIGH SCHOOL

CARRIE PALMER WEBER
MIDDLE SCHOOL

4,266 SF
Divisible

The Dance Arts Centre

BACK TO ROCK

OrangeTheory

HANDLES

Sunny Nail Spa

Vintage Grapes

Saint Honore
Pastry Shop

HAND STONE

Ikeo

little
gym

SMASH
BURGER

CVS
pharmacy
COMING SOON

METRO
AQUATIC THERAPY

Yoga Life

Port Tutoring

LEASE OUT

KUMON

wellground

backin3Robbins

UNITED STATES
POSTAL SERVICE

PORT WASHINGTON BOULEVARD

14K

MAIN STREET

WELLS FARGO

DIME

MAPLE STREET

Valley

BERNARD STREET

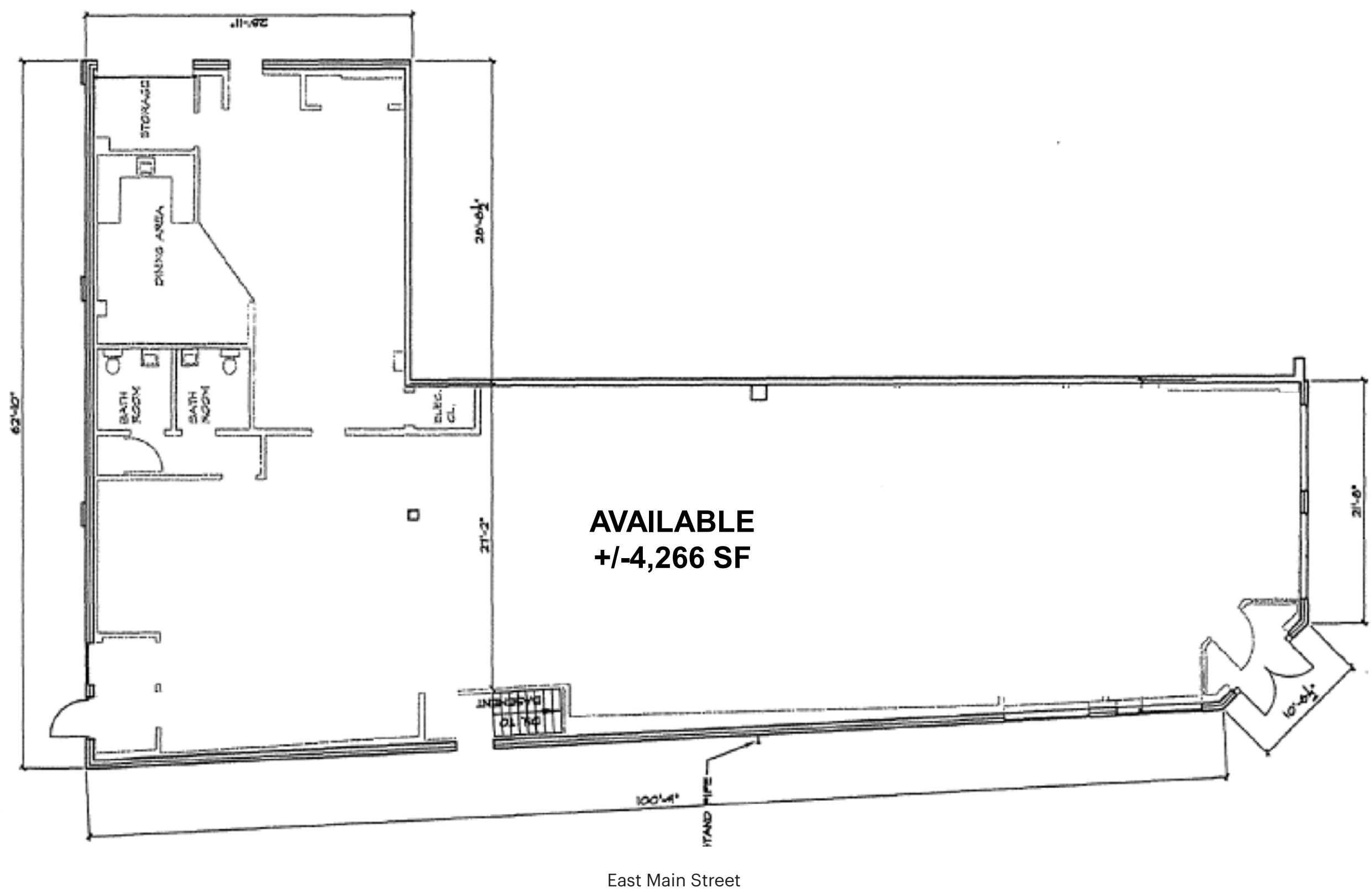
ATHNASIUM
The Art of Learning Center

Citibank

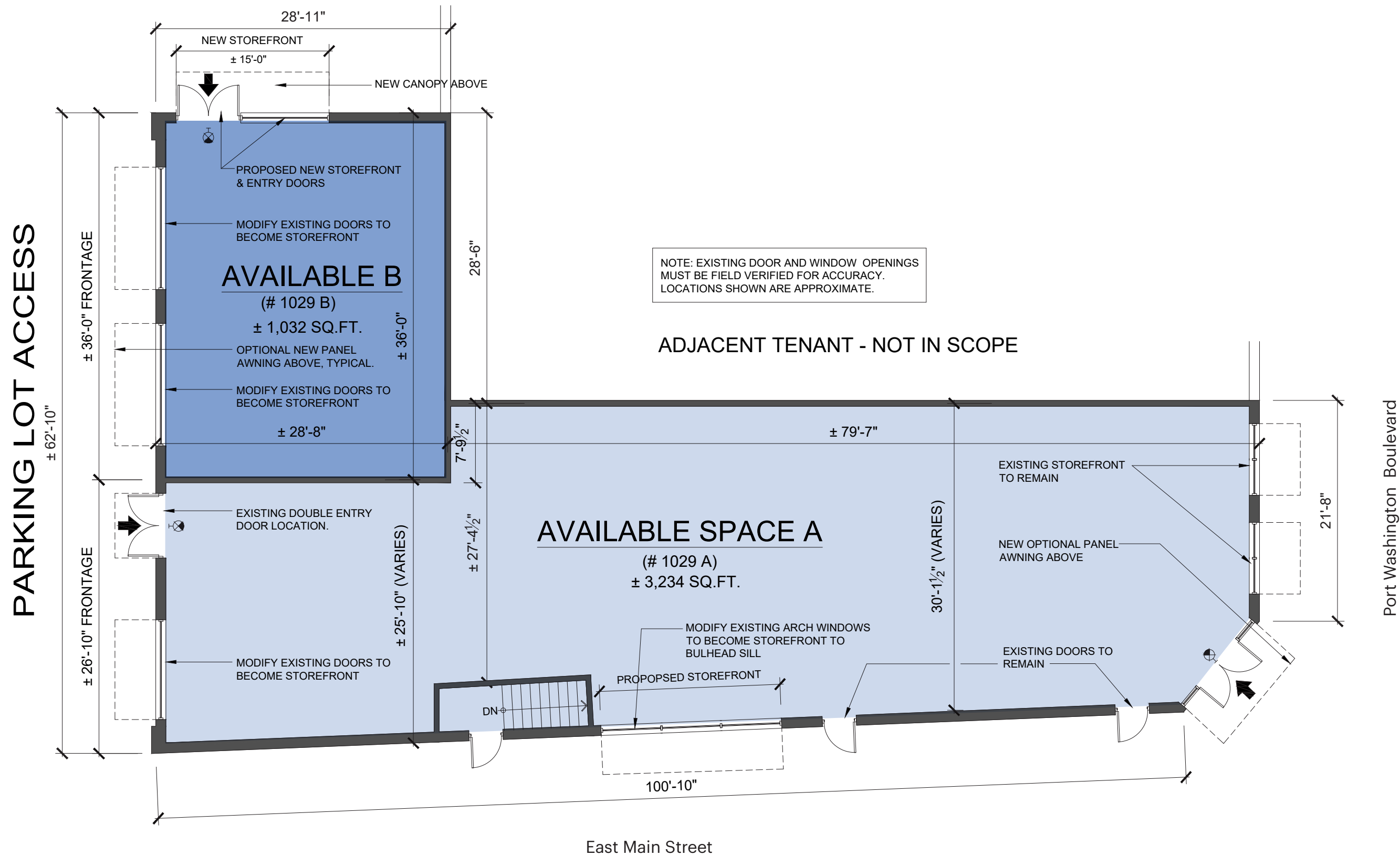
VANDERVENTER AVENUE



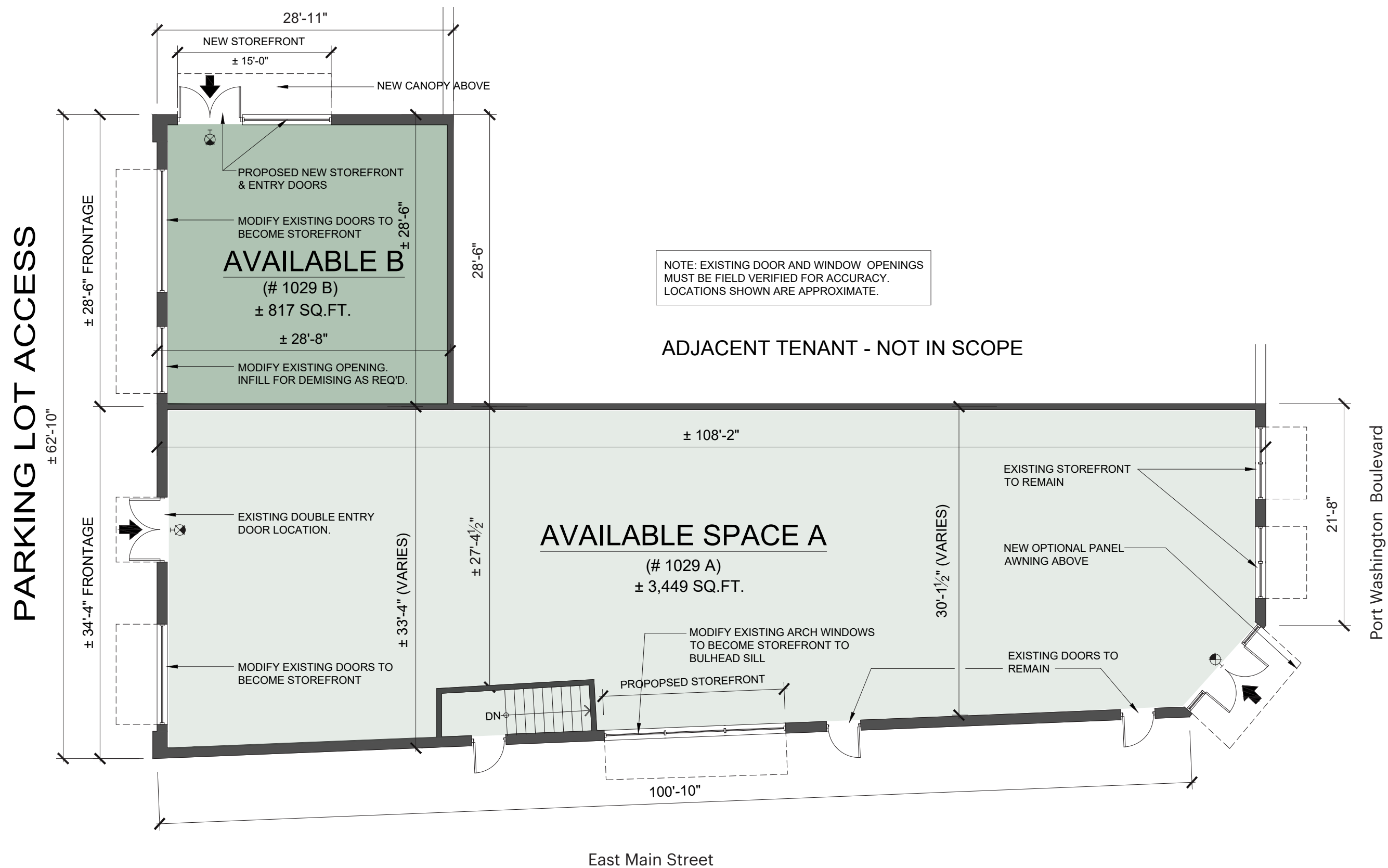
Prime Restaurant End Cap



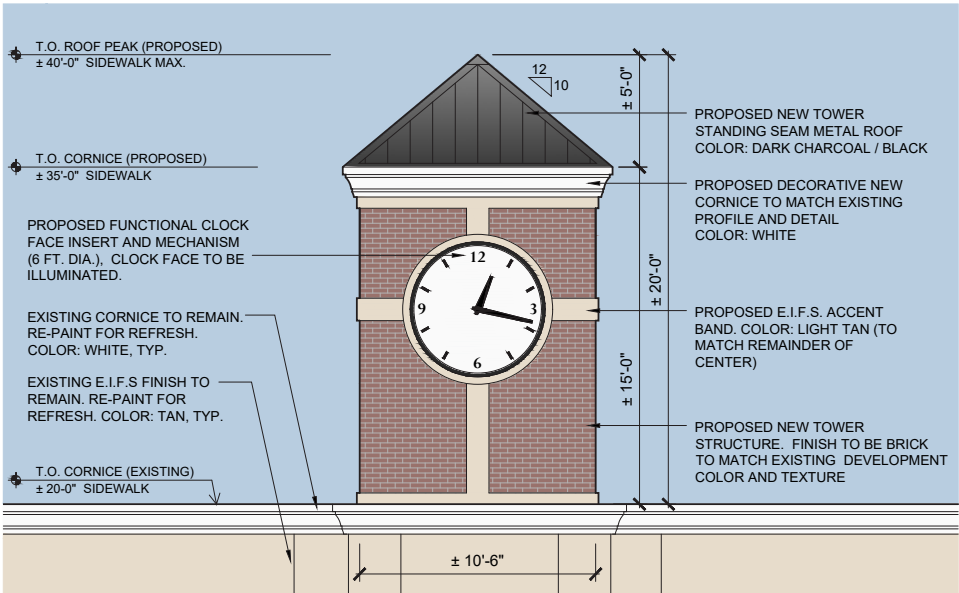
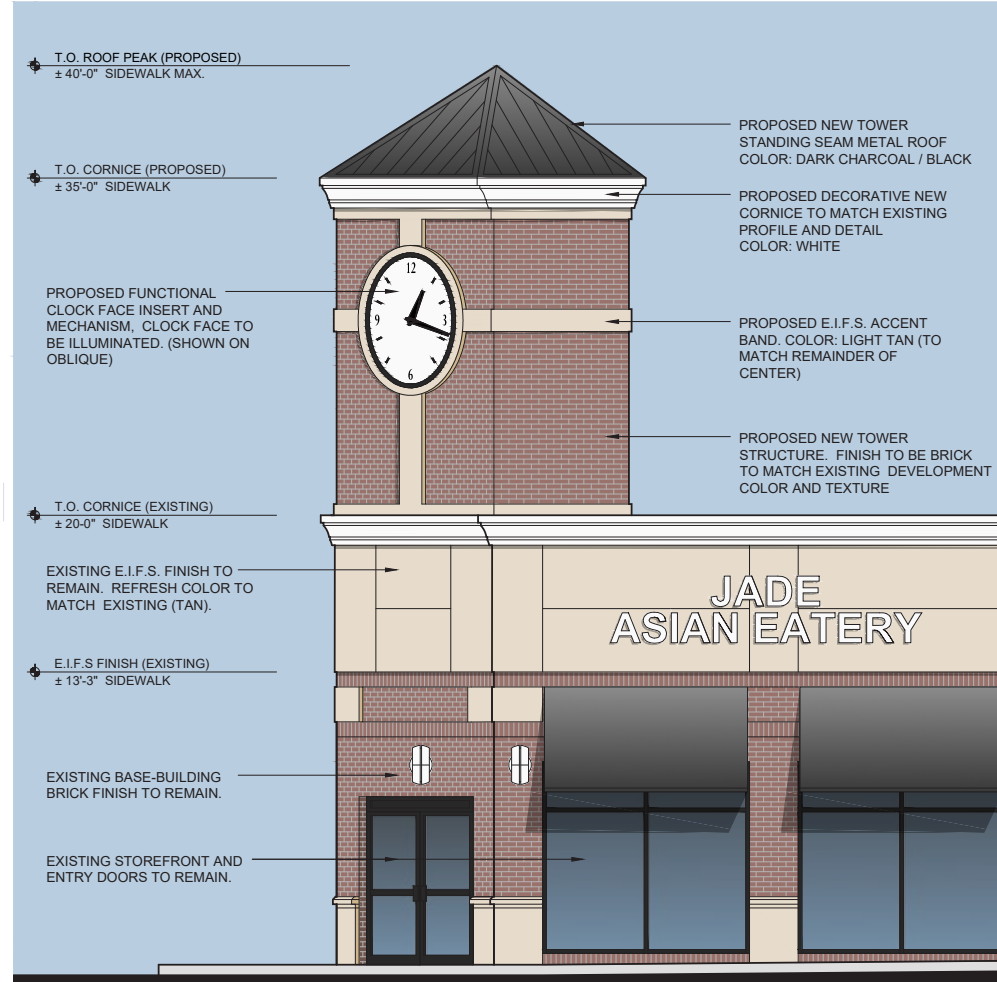
Site Plan - Option 1



Site Plan - Option 2



Proposed Elevation



CLOCK TOWER: FACE VIEW

SCALE: 1/8" = 1'-0"

PROPOSED TOWER AREA OF FACADE REFRESH



SITE AERIAL

NOT TO SCALE



About Port Washington

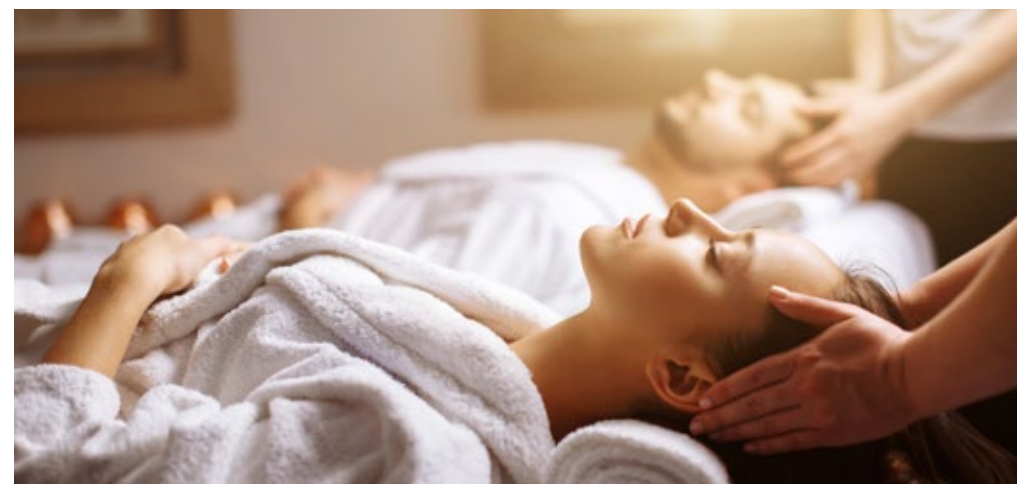
Port Washington is one of Long Island's most desirable North Shore communities, known for its strong demographics, scenic waterfront, and vibrant small-town character.

The area features a dense and affluent residential base with a mix of historic homes, new luxury developments, and waterfront properties that drive consistent local spending. It is served by the highly regarded Port Washington Union Free School District, widely recognized for academic excellence, which further strengthens the area's appeal to families and long-term residents.

Easy access to Manhattan via the LIRR, as well as proximity to major roadways, makes the town attractive to both commuters and visitors.

The heart of the community is its charming Main Street corridor, a lively destination lined with boutiques, restaurants, cafés, and neighborhood services that benefit from steady foot traffic and strong local loyalty.

The town's picturesque harbor and marinas add to its appeal, attracting boating enthusiasts and seasonal visitors. With a built-in customer base, strong household incomes, and a well-established retail culture, Port Washington offers an exceptional environment for retail and restaurant operators seeking a stable, high-quality trade area.



1 MILE RADIUS

POPULATION

14,425

HOUSEHOLDS

5,223

AVERAGE HOUSEHOLD INCOME

\$275,600

MEDIAN HOUSEHOLD INCOME

\$195,203

COLLEGE GRADUATES (Bachelor's +)

71.78%

TOTAL BUSINESSES

840

TOTAL EMPLOYEES

6,468

DAYTIME POPULATION (w/ 16 yr +)

13,643

3 MILE RADIUS

POPULATION

69,662

HOUSEHOLDS

24,424

AVERAGE HOUSEHOLD INCOME

\$279,102

MEDIAN HOUSEHOLD INCOME

\$178,358

COLLEGE GRADUATES (Bachelor's +)

70.67%

TOTAL BUSINESSES

3,504

TOTAL EMPLOYEES

34,439

DAYTIME POPULATION (w/ 16 yr +)

71,217

5 MILE RADIUS

POPULATION

181,975

HOUSEHOLDS

63,635

AVERAGE HOUSEHOLD INCOME

\$243,219

MEDIAN HOUSEHOLD INCOME

\$155,753

COLLEGE GRADUATES (Bachelor's +)

64.53%

TOTAL BUSINESSES

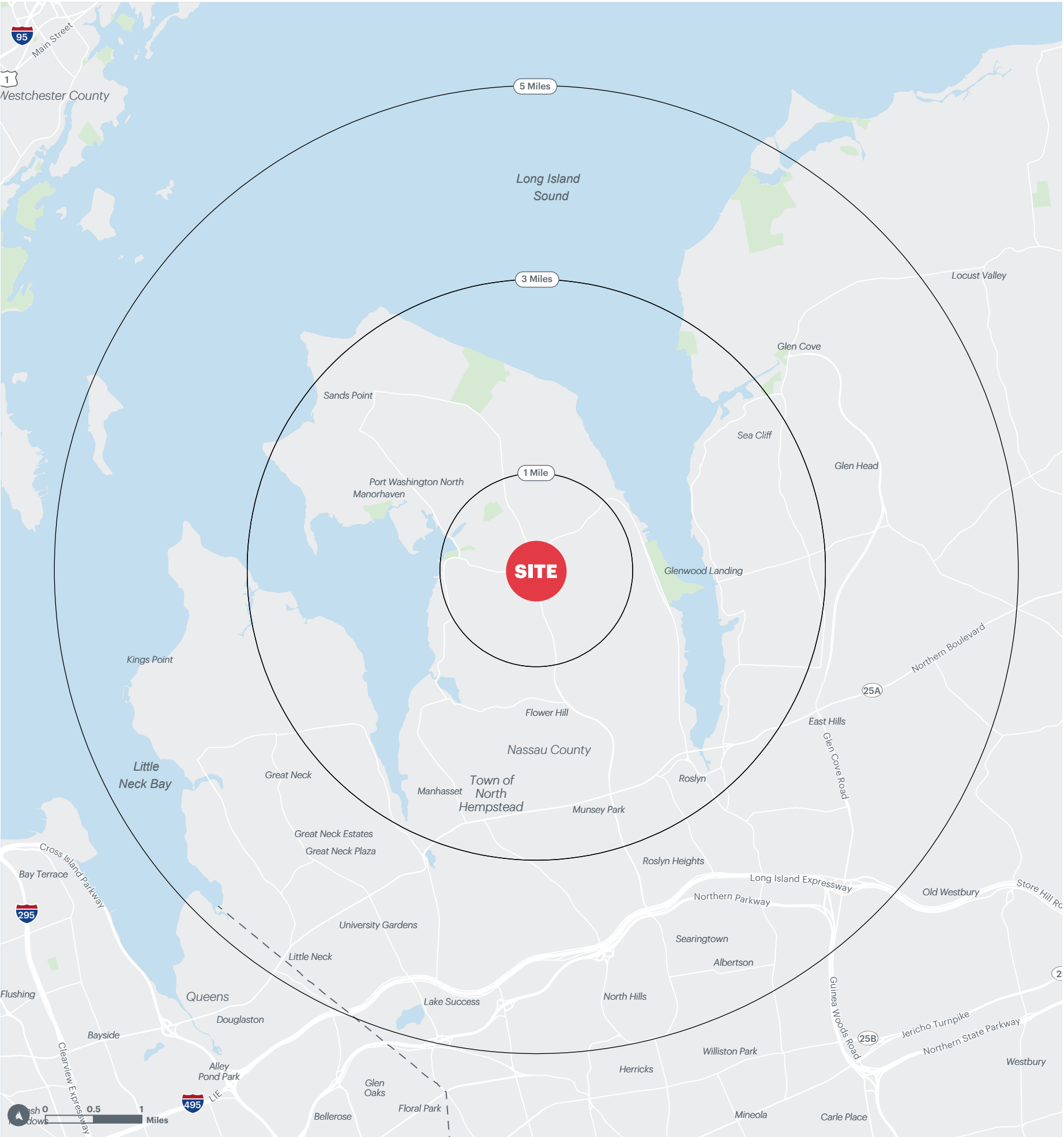
9,928

TOTAL EMPLOYEES

112,990

DAYTIME POPULATION (w/ 16 yr +)

208,524





CONTACT EXCLUSIVE AGENTS

JASON SOBEL

jsobel@ripcony.com

516.933.8880

SYDNEY SCHMITT

sschmitt@ripcony.com

516.933.8880

RIPCO
REAL ESTATE