

MEDICAL OFFICE SPACE FOR LEASE

2150 GETTLER STREET

DYER, IN



PROPERTY OVERVIEW

Experience the epitome of excellence in medical office space - our Class A facility stands as the premier choice on the Franciscan St. Margaret Hospital Campus in Northwest Indiana. Strategically positioned at the junction of Route 30 and the Illinois/Indiana State line in Dyer, IN, it offers unparalleled convenience, just moments away from major highways.

- Suites build to suite
- Ample parking as well as valet for patients
- On campus with covered walk way to St. Margaret Hospital
- Professionally managed by nationally recognized firm
- Spectacular views adjacent park and forest preserve
- Some suites offer tenant improvement allowance



CONTACT US

219-764-3104

Michael C. O'Connor, SVP Development & Leasing
moconnor@holladayproperties.com

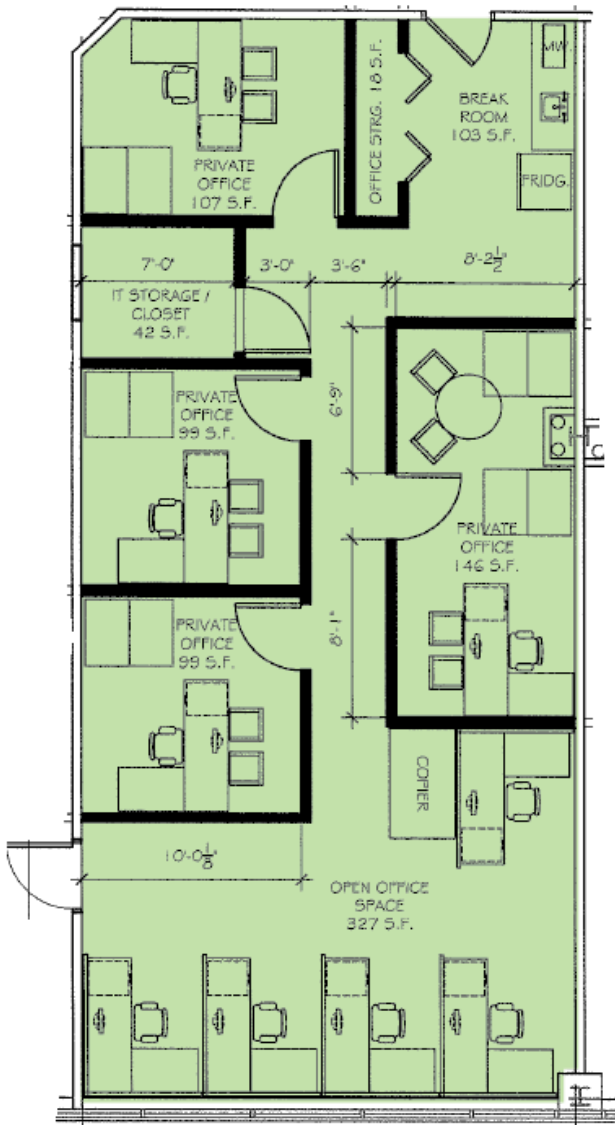
6370 Ameriplex Drive, Suite 110 Portage, IN 46368
holladayproperties.com

MEDICAL OFFICE SPACE FOR LEASE

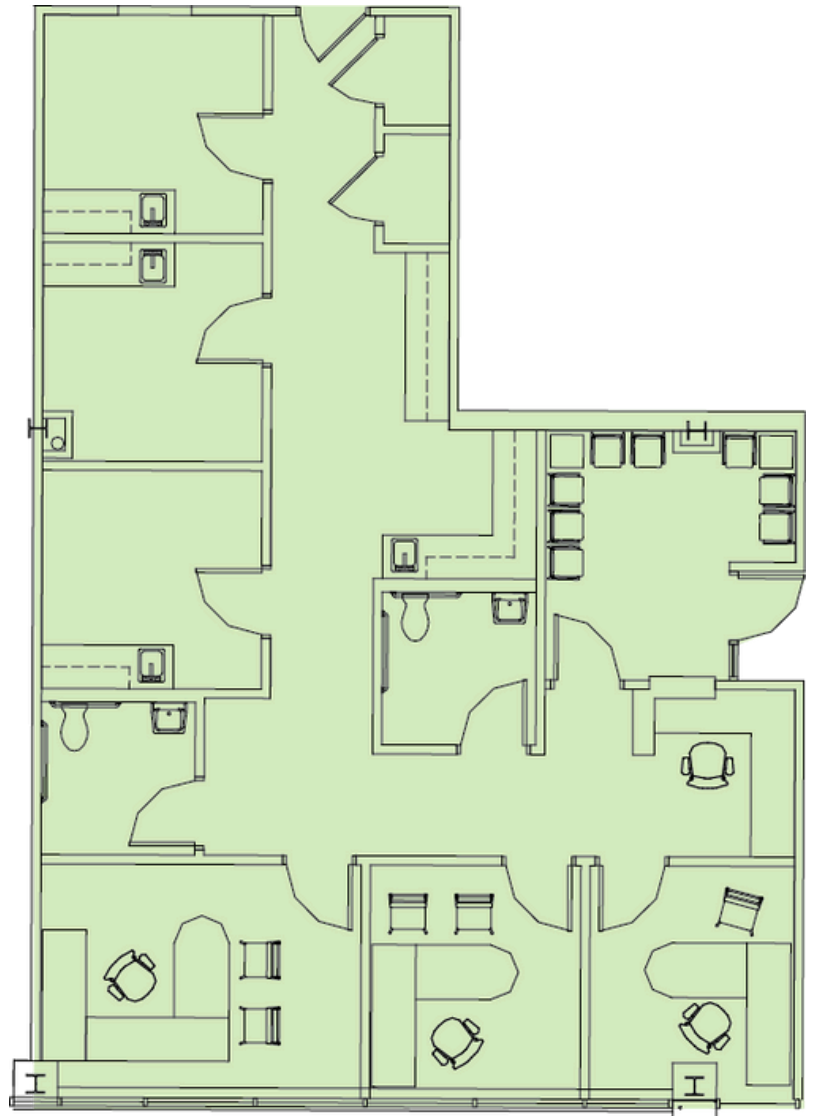
2150 GETTLER STREET
DYER, IN



SUITE 122 1,306 SF



SUITE 120 1,644 SF



CONTACT US

219-764-3104

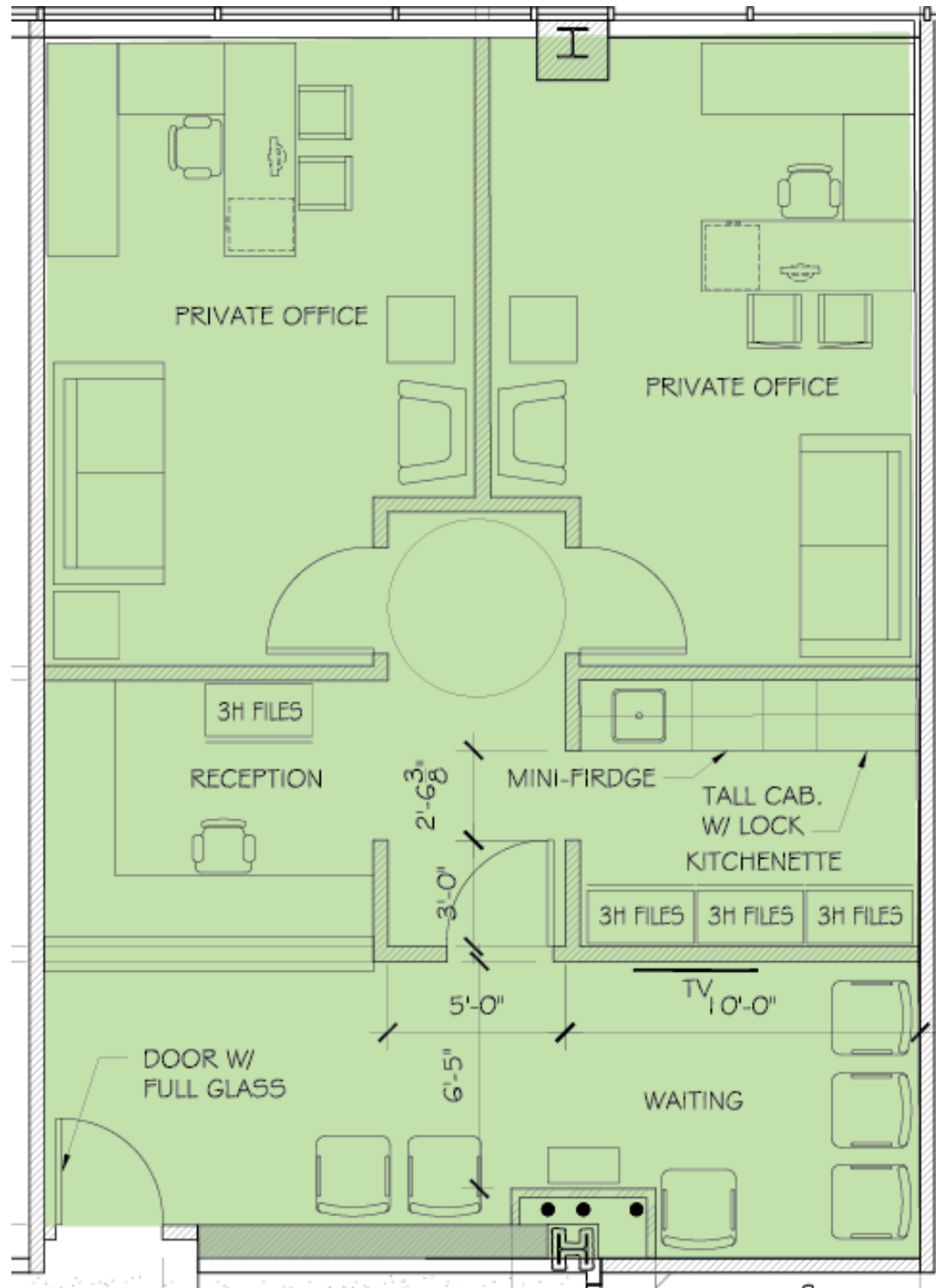
Michael C. O'Connor, SVP Development & Leasing
moconnor@holladayproperties.com
6370 Ameriplex Drive, Suite 110 Portage, IN 46368
holladayproperties.com

MEDICAL OFFICE SPACE FOR LEASE

2150 GETTLER STREET
DYER, IN



SUITE 405 942 SF



CONTACT US

219-764-3104

Michael C. O'Connor, SVP Development & Leasing
moconnor@holladayproperties.com
6370 Ameriplex Drive, Suite 110 Portage, IN 46368
holladayproperties.com