

FOR LEASE  
**8730 SOMERS RD**

Jacksonville, FL 32226



**±15 ACRES  
AVAILABLE NOW**

**±2 ACRES  
AVAILABLE MAY 2025**

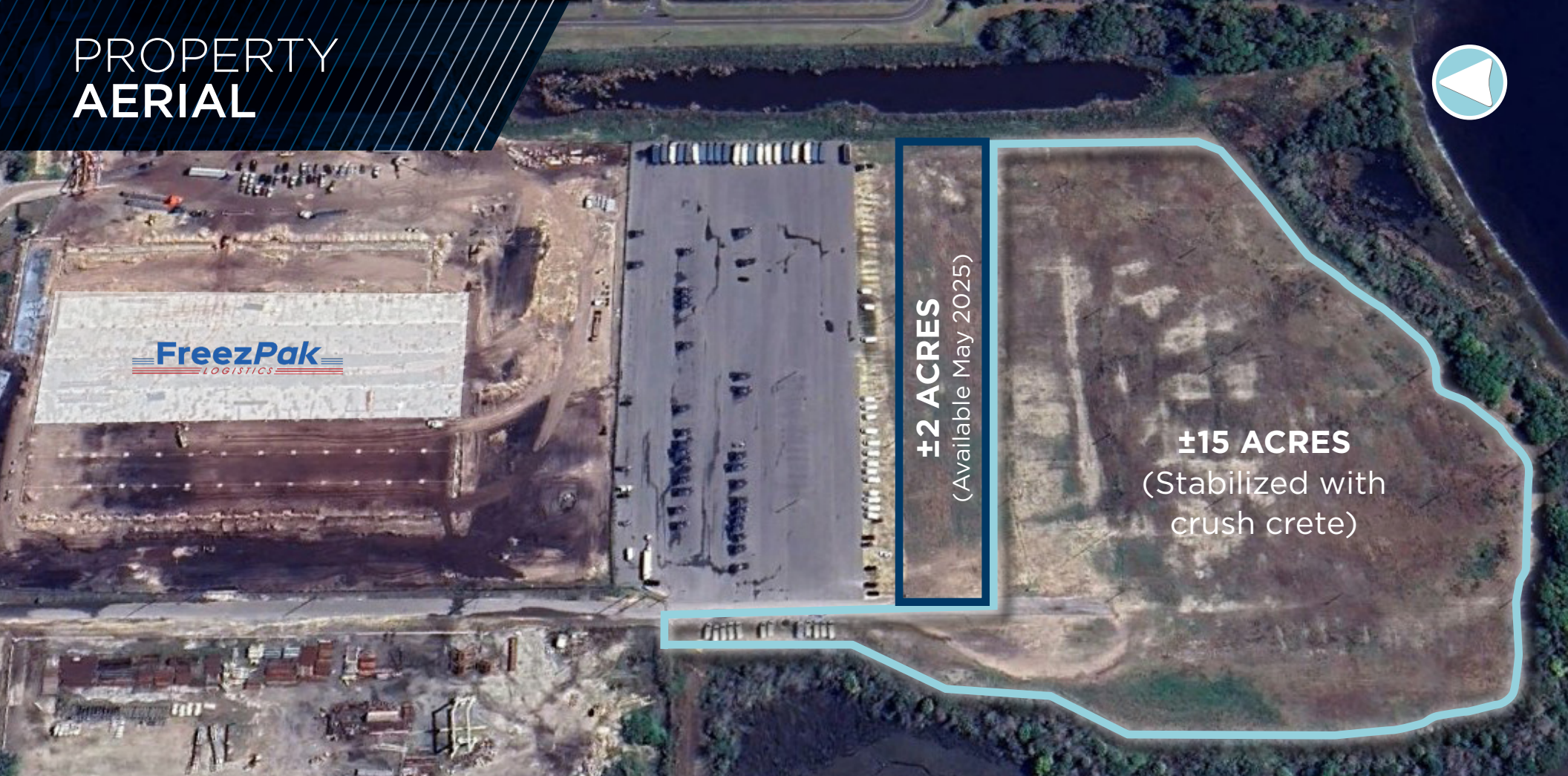
# **±17 ACRE DROP YARD**

(USABLE)



STABLIZED  
AND  
FENCED YARD

# PROPERTY AERIAL



## PROPERTY FEATURES



**±17 ACRES**  
TOTAL USABLE



**IW**  
(Industrial Water Related)  
ZONING



**±15 ACRES**  
CRUSH CRETE  
STABILIZED  
AVAILABLE NOW



**±2 ACRES**  
AVAILABLE MAY 2025



**LIGHTING, FENCE**  
SITE FEATURES





**WATER / SEWER /  
ELECTRICITY**  
UTILITIES IN PLACE

# PROPERTY AERIAL MAP



Imeson  
Industrial  
Park

8730 Somers Rd

-  INTERMODAL TERMINAL
-  JAXPORT TERMINAL
-  INTERNATIONAL AIRPORT

## LOCATION & ACCESS

- 1.9 Miles to I-95
- 8.8 Miles to I-295
- 8.9 Miles to I-10
- 6.2 Miles to Dames Point Terminal & CSX
- 7.2 Miles to Blount Island Terminal
- 8.6 Miles to Norfolk Southern
- 9.5 Miles to Jacksonville International Airport

# FOR LEASE | ±17 ACRE DROP LOT



## CONTACT INFO

### TYLER NEWMAN

tyler.newman@cushwake.com  
+1 904 380 8336

### JACOB HORSLEY

jacob.horsley@cushwake.com  
+1 904 380 8335

### KENDALL WILSON

kendall.wilson@cushwake.com  
+1 904 380 8341

### DRAKE CHAMBERLIN

drake.chamberlin@cushwake.com  
+1 904 539 7240

©2024 Cushman & Wakefield. All rights reserved. The material in this presentation has been prepared solely for information purposes, and is strictly confidential. Any disclosure, use, copying or circulation of this presentation (or the information contained within it) is strictly prohibited, unless you have obtained Cushman & Wakefield's prior written consent. The views expressed in this presentation are the views of the author and do not necessarily reflect the views of Cushman & Wakefield. Neither this presentation nor any part of it shall form the basis of, or be relied upon in connection with any offer, or act as an inducement to enter into any contract or commitment whatsoever. NO REPRESENTATION OR WARRANTY IS GIVEN, EXPRESS OR IMPLIED, AS TO THE ACCURACY OF THE INFORMATION CONTAINED WITHIN THIS PRESENTATION, AND CUSHMAN & WAKEFIELD IS UNDER NO OBLIGATION TO SUBSEQUENTLY CORRECT IT IN THE EVENT OF ERRORS.



±17 ACRES

