

SOUTHWEST INDUSTRIAL CENTER

5700 Savoy Lane – 24,105 SF

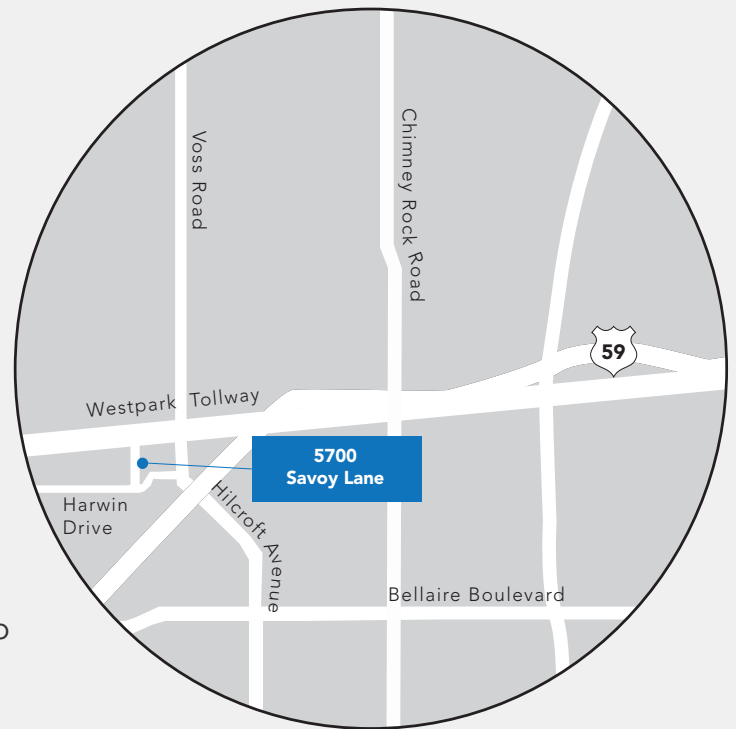


BUILDING FEATURES

- 24,105 SF
- Rear-load configuration
- Close proximity to Highway 59, Westpark Tollway and Loop 610

SUITE FEATURES

- 24,105 SF available
- 4,346 SF office
- 19,758 SF warehouse
- 18' clear height
- 3 semi-dock doors / 1 drive-in ramp



SUITE 5700

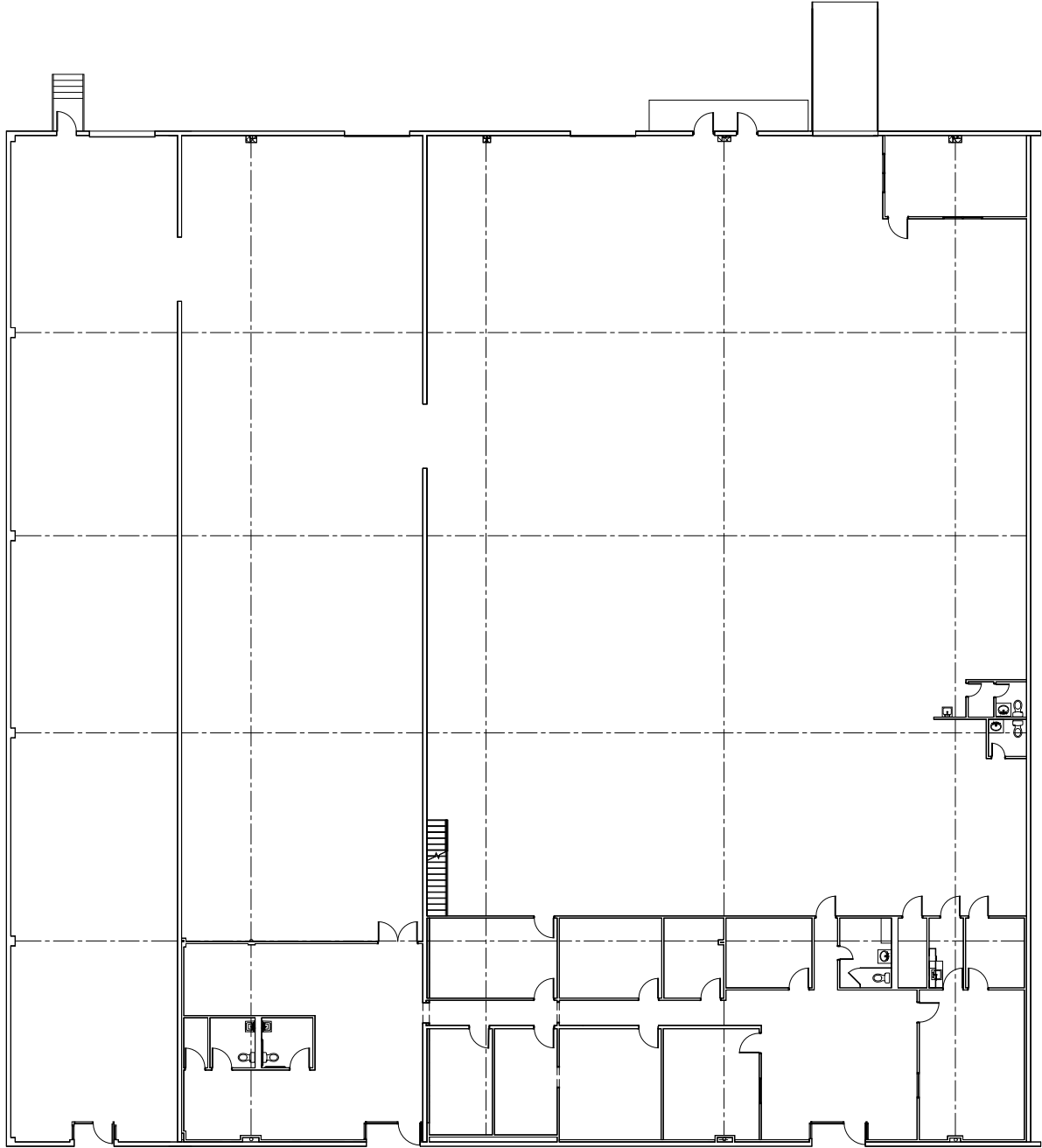


For lease information please contact Stream
Meg Zschappel | 713.300.0284 | meg.zschappel@streamrealty.com
Natalie Gilbert | 713.332.3413 | natalie.gilbert@streamrealty.com

SOUTHWEST INDUSTRIAL CENTER

5700 Savoy Lane – 24,105 SF

SUITE 5700



For lease information please contact Stream
Meg Zschappel | 713.300.0284 | meg.zschappel@streamrealty.com
Natalie Gilbert | 713.332.3413 | natalie.gilbert@streamrealty.com