

# FOR SUBLEASE

## OFFICE | 1760 SOUTH TELEGRAPH ROAD



### 1760 SOUTH TELEGRAPH ROAD, SUITE 103 BLOOMFIELD HILLS, MI 48302

#### PROPERTY HIGHLIGHTS:

- Beautiful lake views from private offices
- 4 Private window Offices
- Newly Remodeled Modern Building Common Areas
- Join other tenants - Hertz Schram law firm and Oakland County Bar Association
- Excellent Access to I-75 and Southfield via Telegraph Road
- Strong Management and Ownership

**EXPIRES OCTOBER 31, 2025**

SPACE	LEASE RATE	SIZE (SF)
Suite 103   Sublease	\$21.50 SF/yr	1,469 SF

The information provided herein along with any attachment(s) was obtained from sources believed to be reliable, however, Friedman Real Estate makes no guarantees, warranties, or representations as to the completeness or accuracy of such information and legal counsel is advised. All information provided is subject to verification and no liability for reliance on such information or errors or omissions is assumed. The presentation of this property is submitted subject to errors, omissions, change of price or conditions, prior sale or lease, or withdrawal without notice. Copyright © 2024 Friedman Real Estate. All rights reserved.

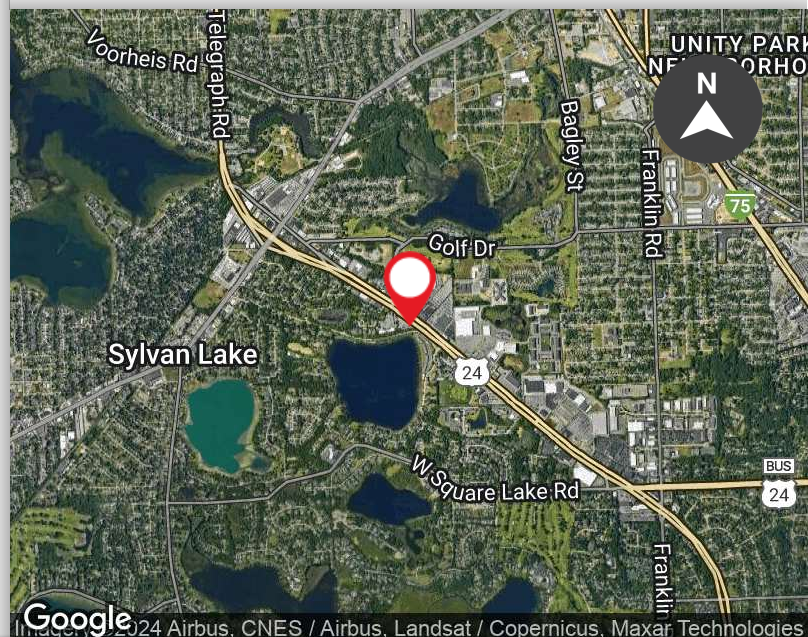
FOR MORE INFORMATION PLEASE CONTACT:



**STEVE EISENSHTADT**  
Senior Vice President, Brokerage Services  
steve.eisenshtadt@freg.com

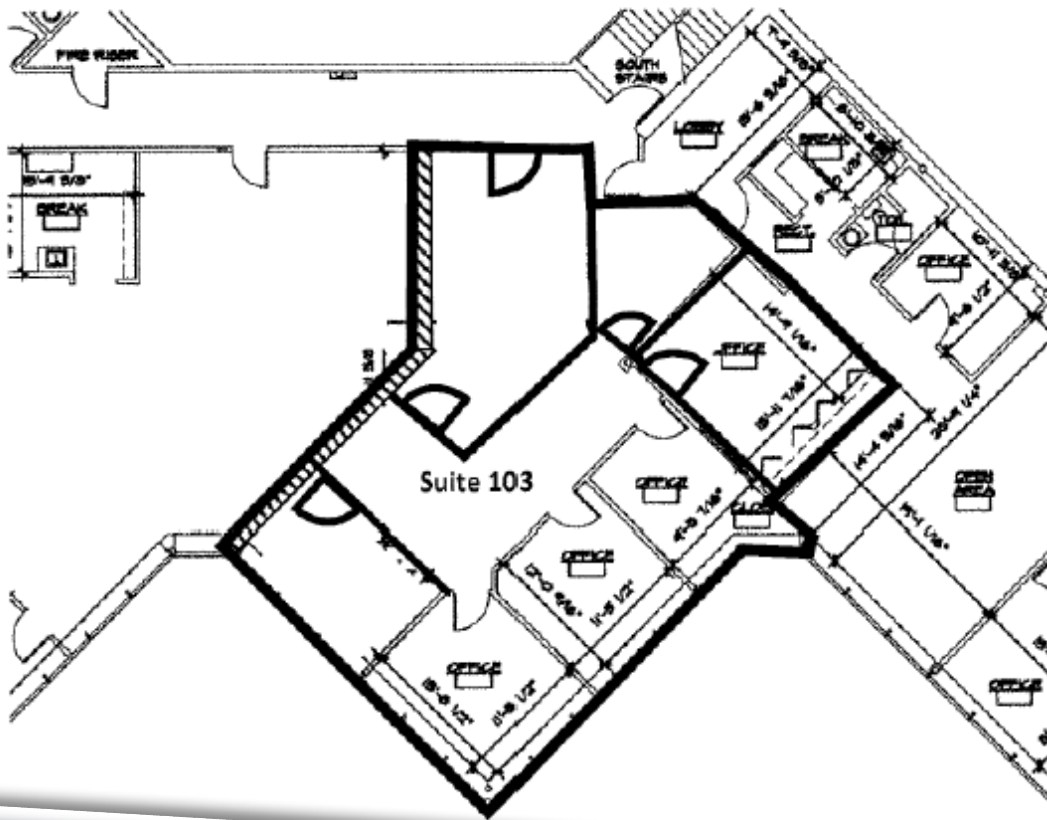
**248.324.2000**

**eCODE 004**



**OFFICE SUBLEASE | 1760 SOUTH TELEGRAPH ROAD**  
**PROPERTY FLOOR PLAN**

Suite 103 Proposed Floor Plan  
Rentable Square Feet: 1,469sf



FOR MORE INFORMATION **PLEASE CONTACT:**



**STEVE EISENSHTADT**  
steve.eisenshtadt@freg.com

**OFFICE SUBLEASE | 1760 SOUTH TELEGRAPH ROAD**  
**PHOTOS**

