

Space Available For Sublease

871 Mountain Avenue, Springfield, NJ



Move-in ready office suite

- Fully Furnished
- Zoned:
 - Office
 - Medical
 - School
- Direct Access to Route 22

Building Size ± 21,600 sf

Available Space Entire 3rd floor – 11,637 sf
Partial 2nd floor

Expiration January 31, 2029

Rental Rate Call for pricing

Parking 4 per 1,000 sf

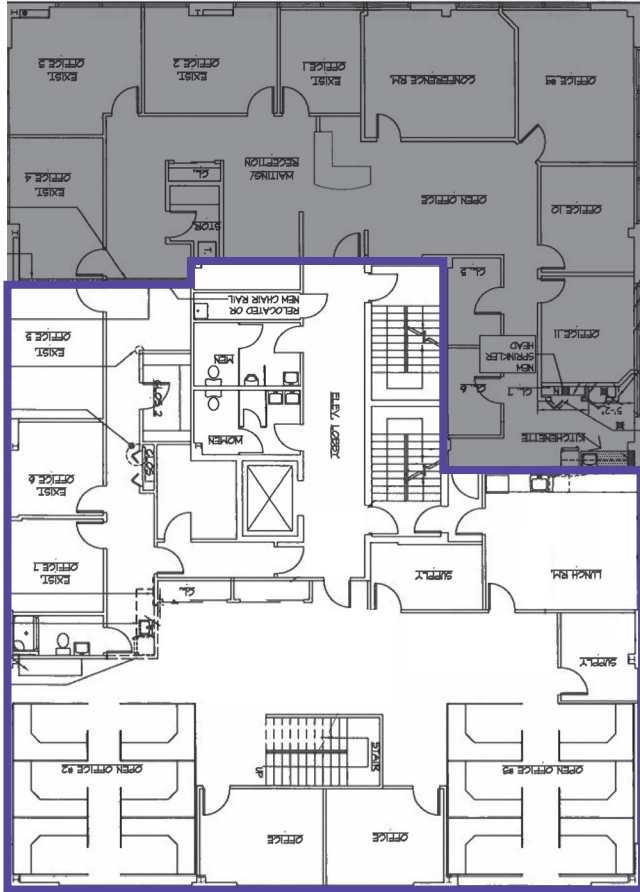
For more information

Steven E. Geltzeiler, Senior Vice President
D +1 973 898 4013 | C +1 732 713 1423
steven.geltzeiler@avisonyoung.com

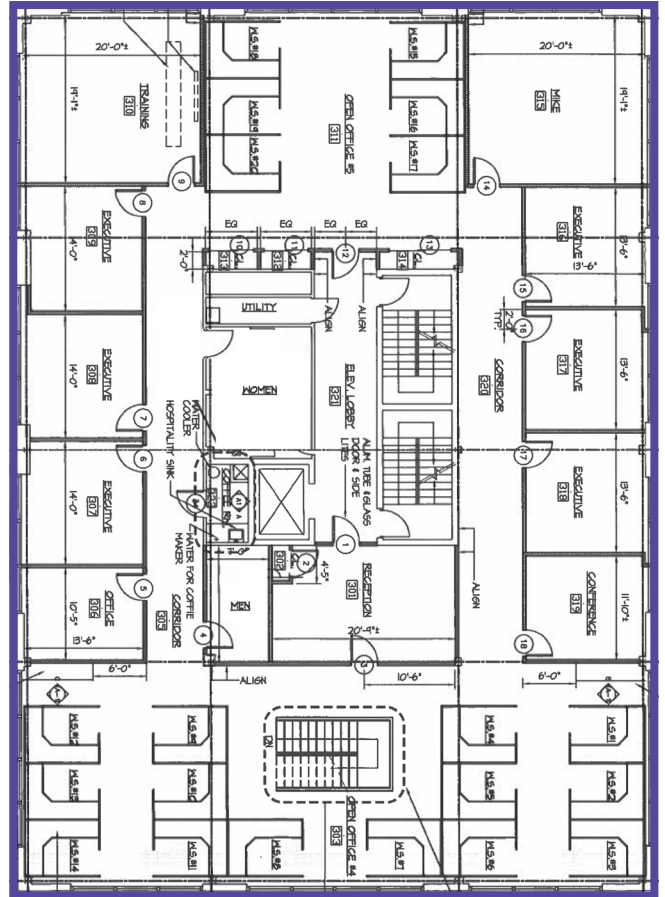
Office Space Available For Sublease

871 Mountain Ave, Springfield, NJ

Floor Plan – 2nd Floor



Floor Plan – 3rd Floor



**For more
information**

Steven E. Geltzeiler, Senior Vice President
D +1 973 898 4013 | C +1 732 713 1423
steven.geltzeiler@avisonyoung.com

**AVISON
YOUNG**