



FOR LEASE

BARRINGTON CENTRE II

Property Highlights

- 3,230 - 17,290 SF Available
- \$25.00/SF MG
- Building signage opportunities available
- Building amenities include 24-hour fitness center with shower access, abundant well-lit parking, and common area with lounge seating
- Located near SAM'S Club Home Office, New Walmart Home Office, Northwest Health, and within walking distance to many amenities
- Excellent visibility to I-49

*information deemed reliable but not guaranteed

For more information, please contact:

Matt Mozzoni

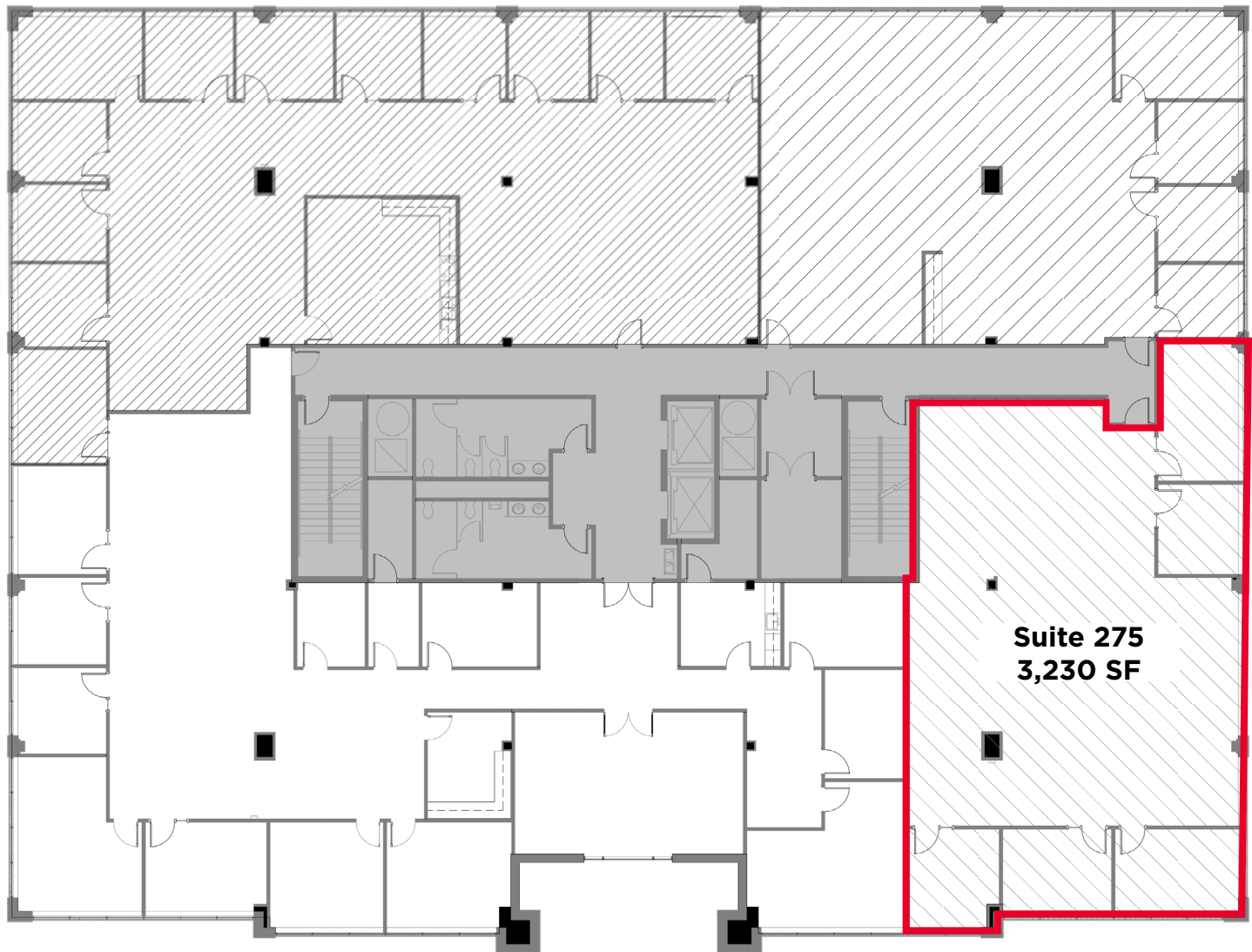
mmozoni@sagepartners.com
501 425 6905

Olivia Funderburk

ofunderburk@sagepartners.com
417 818 6875

479 845 3000
sagepartners.com

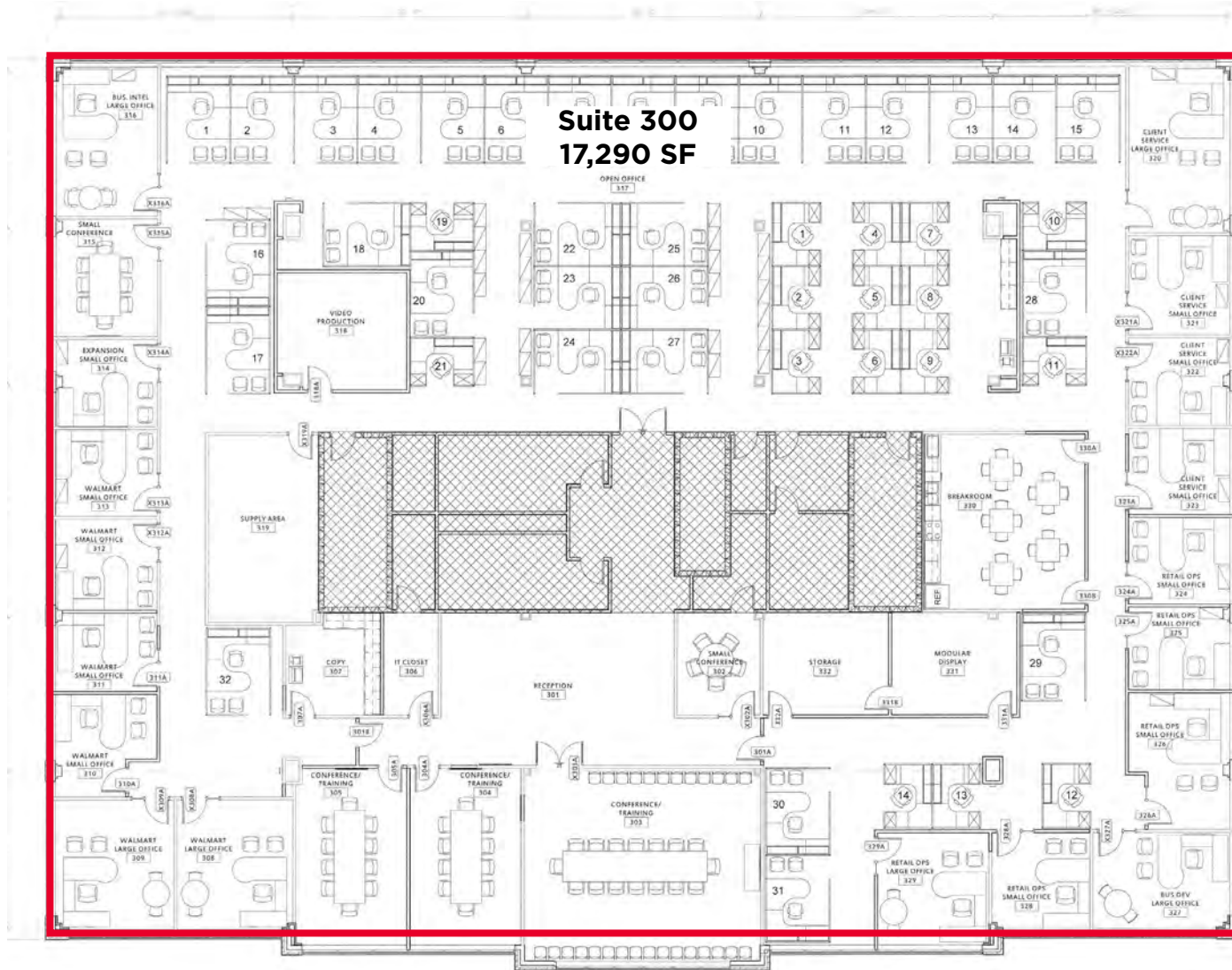
2ND FLOOR PLAN 903 N 47TH STREET | ROGERS, AR



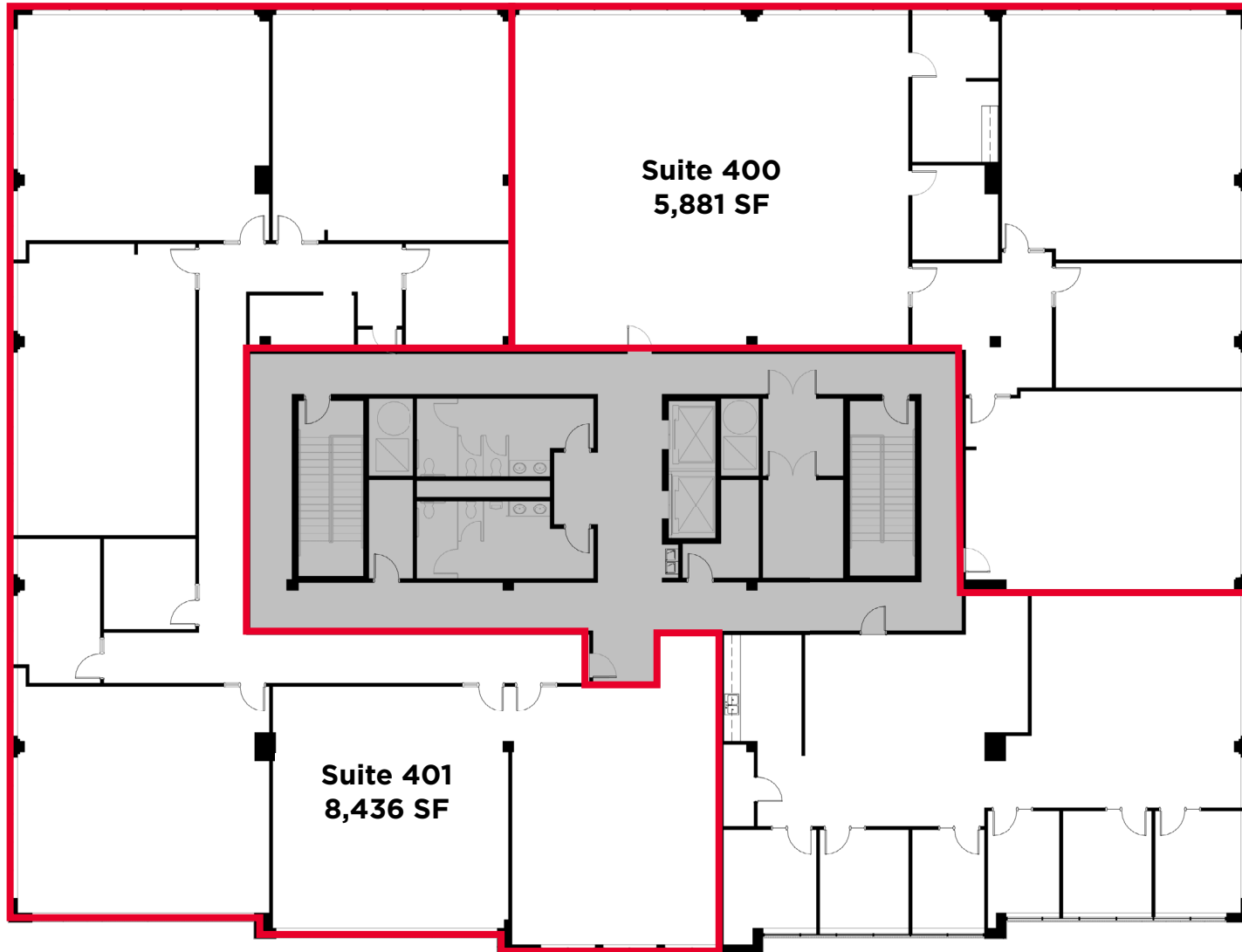
Suite 275
3,230 SF



Matterport
CLICK FOR
VIRTUAL TOUR



***Suites 400/401 can be combined for 14,317 SF**



SITE PLAN 903 N 47TH STREET | ROGERS, AR

CUSHMAN & WAKEFIELD

sage
PARTNERS

