



**NEWLY RENOVATED COMMON AREAS**

**EXTERIOR TENANT DIRECTORY  
COMING SOON**

# Princeton Junction Professional Center

**88 PRINCETON HIGHTSTOWN ROAD  
PRINCETON JUNCTION, NJ**

## **PRIME MEDICAL OFFICE SPACE FOR LEASE**

- 2,525 RSF medical suite on the 1<sup>st</sup> floor (includes 6 examining rooms with sinks & 2 bathrooms – see plan on reverse side)
- 2,197 to 4,313 RSF available on the 2nd floor
- 2-story medical office building
- 3 miles (approx.) from University Medical Center of Princeton at Plainsboro

## **Location & demographics:**

- Less than half a mile to Princeton Junction Train Station, and within minutes of Route 1 and NJ Turnpike (I-95) Exit 8
- Highly affluent demographics; \$176,710 average household income within a 3-mile radius

## **Join the following prestigious tenants:**

- Davita
- Lifestance
- Princeton Physicians Group
- Princeton Hypertension-Nephrology Associates

*For information, please contact:*

**Adam Silver**

t 732-687-0906

adam.silver@nmrk.com

**201 Route 17 North, Rutherford, NJ 07070  
One Tower Center Boulevard, Suite 1201, East Brunswick, NJ 08816**

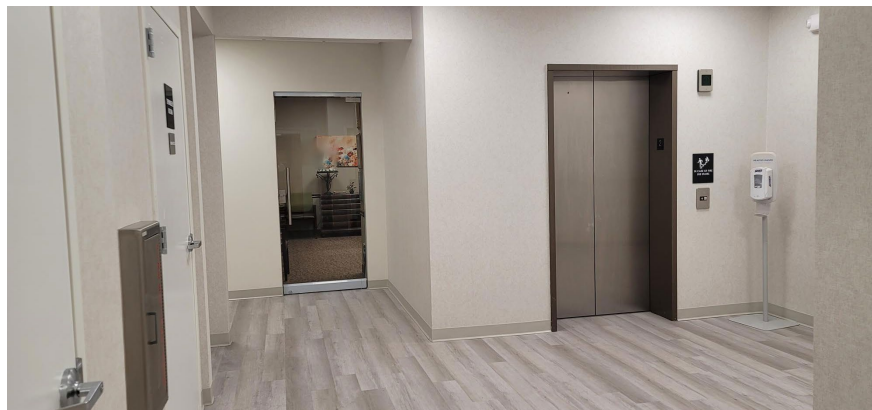
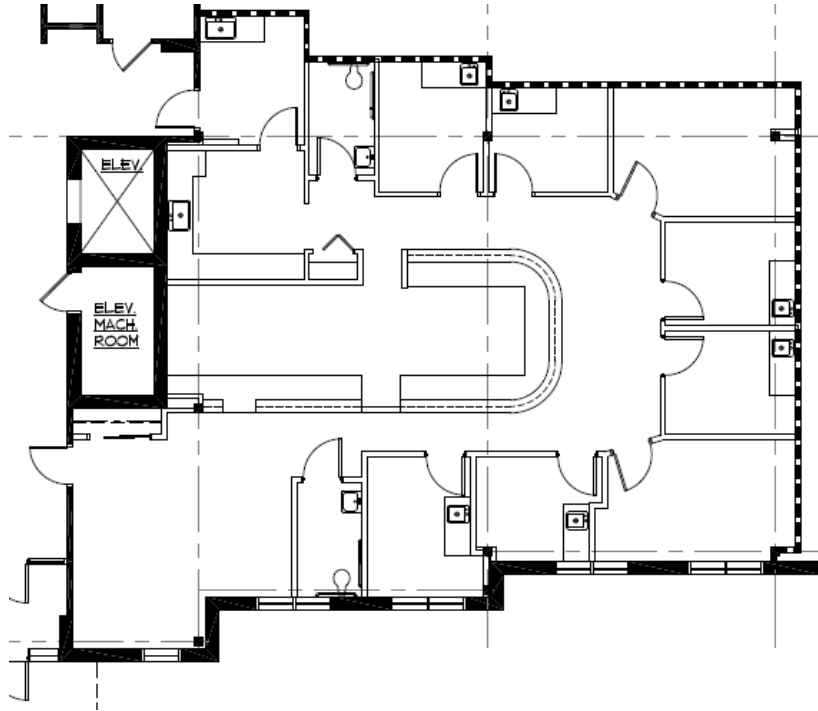
[nmrk.com](http://nmrk.com)

Newmark, Licensed Real Estate Broker. The information contained herein has been obtained from sources deemed reliable but has not been verified and no guarantee, warranty or representation, either express or implied, is made with respect to such information. Terms of sale or lease and availability are subject to change or withdrawal without notice.

**NEWMARK**

# Princeton Junction Professional Center

1<sup>ST</sup> FLOOR – 2,525 RSF



201 Route 17 North, Rutherford, NJ 07070  
One Tower Center Boulevard, Suite 1201, East Brunswick, NJ 08816

[nmrk.com](http://nmrk.com)

Newmark, Licensed Real Estate Broker. The information contained herein has been obtained from sources deemed reliable but has not been verified and no guarantee, warranty or representation, either express or implied, is made with respect to such information. Terms of sale or lease and availability are subject to change or withdrawal without notice.

**NEWMARK**