

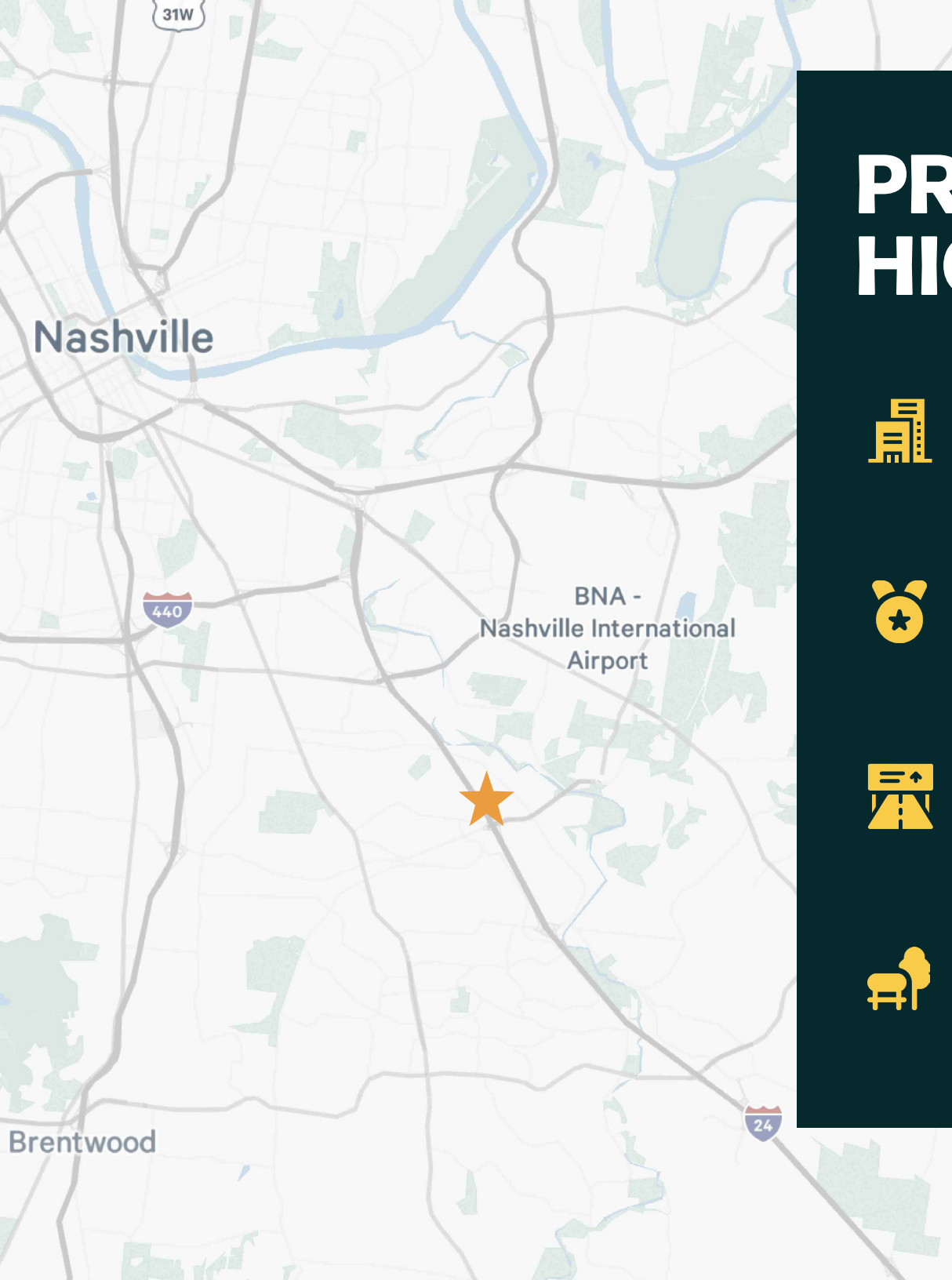
501 METROPLEX, NASHVILLE TN

# 501 METROPLEX

61,254 SF • 3 Building Small Bay Flex Space • For Lease

**CBRE**





# PROPERTY HIGHLIGHTS



Multiple small  
office + warehouse  
availabilities



4.5 Miles from  
Nashville Int'l Airport



Grade Level  
roll up doors



Zoned for  
Commercial Service



Easy Access  
to I-24



Major Building  
Renovations  
Coming in 2025



Park-like  
environment  
with attractive  
landscaping



10 Miles  
to downtown  
Nashville

# SITE PLAN

- BUILDING 100
- BUILDING 200
- BUILDING 300



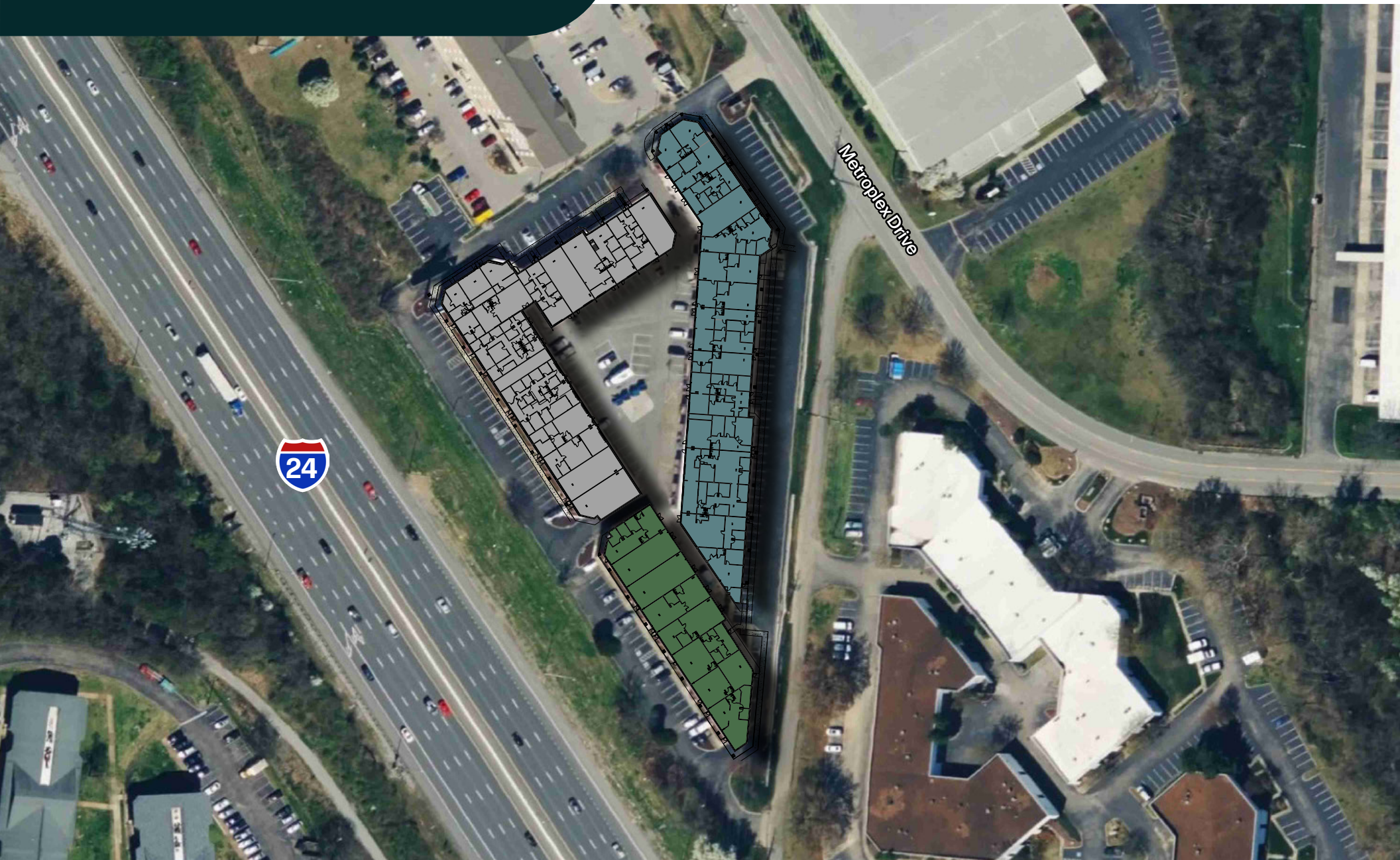


# SITE PLAN

 BUILDING 100

 BUILDING 200

 BUILDING 300

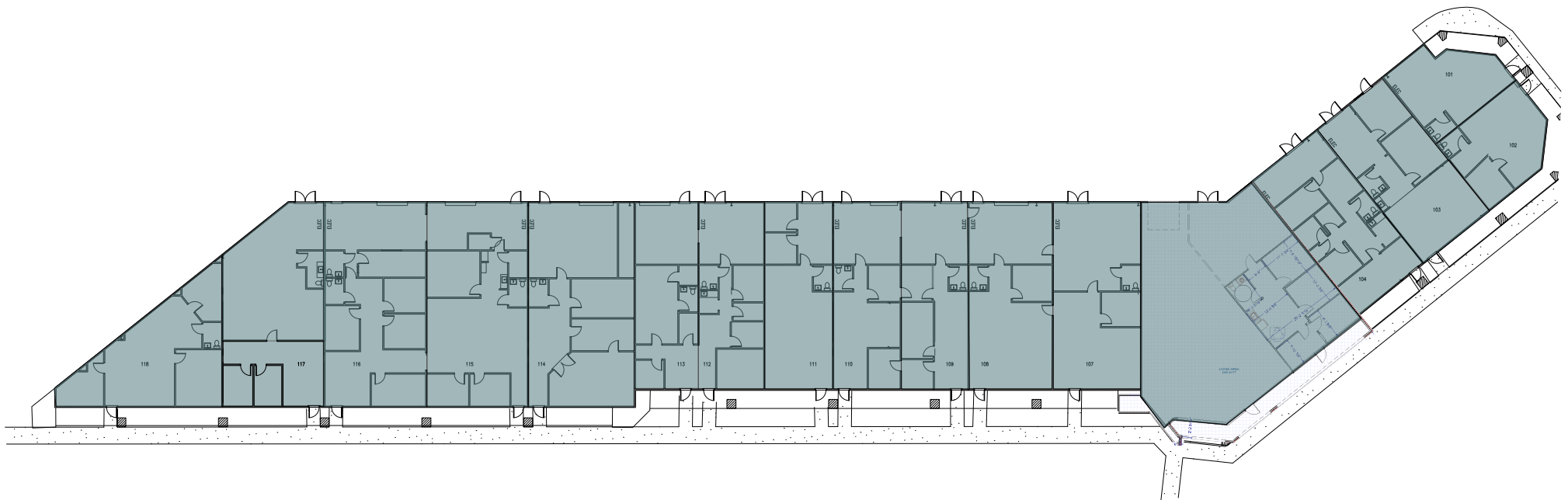




# FLOOR PLAN

BUILDING 100

Fully Leased  
23,597 SF



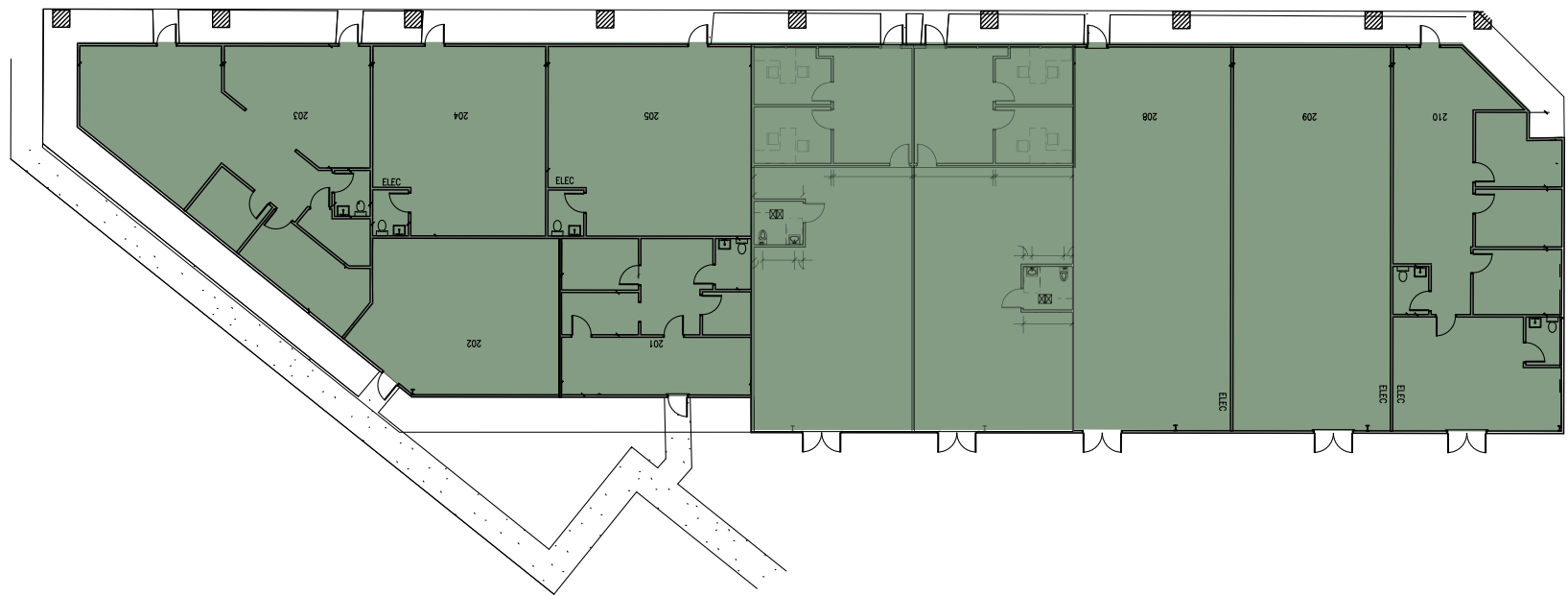
OFFICE

WAREHOUSE

# FLOOR PLAN

BUILDING 200

Fully Leased  
12,242 SF



OFFICE

WAREHOUSE



# FLOOR PLAN

BUILDING 300

24,415 SF

Suite	SF	Availability
301	1,513 SF	7/1/2026
303	1,513 SF	6/1/2026
311	678 SF	5/1/2026
312	1,513 SF	5/1/2026

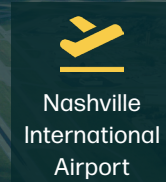


OFFICE WAREHOUSE

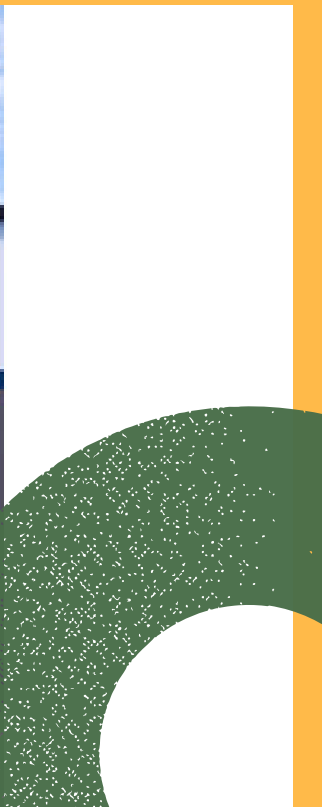


# AREA OVERVIEW

- 1 Woodspring Suites
- 2 Metroplex Business Park
- 3 Chicago Style Gyros
- 4 Mikado Steakhouse
- 5 KFC
- 6 Wendy's
- 7 Taco Bell
- 8 Executive Inn & Suites
- 9 McDonald's







# 501 METROPLEX

NASHVILLE, TN



## CONTACTS

Frank Thomasson CCIM, SIOR

Senior Vice President

Office: +1 615 248 3500

Direct: +1 615 493 9258

[frank.thomasson@cbre.com](mailto:frank.thomasson@cbre.com)

Byran Fort SIOR

Senior Vice President

Office: +1 615 248 3500

Direct: +1 615 493 9259

[byran.fort@cbre.com](mailto:byran.fort@cbre.com)

Ryan Coulter

Senior Associate

Office: +1 615 248 3500

[ryan.coulter@cbre.com](mailto:ryan.coulter@cbre.com)

Grace Sport

Transaction Manager

Office: +1 615 248 3500

[grace.sport@cbre.com](mailto:grace.sport@cbre.com)

© 2024 CBRE, Inc. All rights reserved. This information has been obtained from sources believed reliable but has not been verified for accuracy or completeness. CBRE, Inc. makes no guarantee, representation or warranty and accepts no responsibility or liability as to the accuracy, completeness, or reliability of the information contained herein. You should conduct a careful, independent investigation of the property and verify all information. Any reliance on this information is solely at your own risk. CBRE and the CBRE logo are service marks of CBRE, Inc. All other marks displayed on this document are the property of their respective owners, and the use of such marks does not imply any affiliation with or endorsement of CBRE. Photos herein are the property of their respective owners. Use of these images without the express written consent of the owner is prohibited.

# CBRE