

8787 Ballentine Street

Overland Park, KS 66214



- Suites available from +/-2,284 - 4,095 SF
- \$15.50 PSF Full Service office lease rate
- Updated common areas
- TI allowance available
- Centrally located off I-35 and 69 HWY at 87th Street
- 4 / 1,000 parking ratio

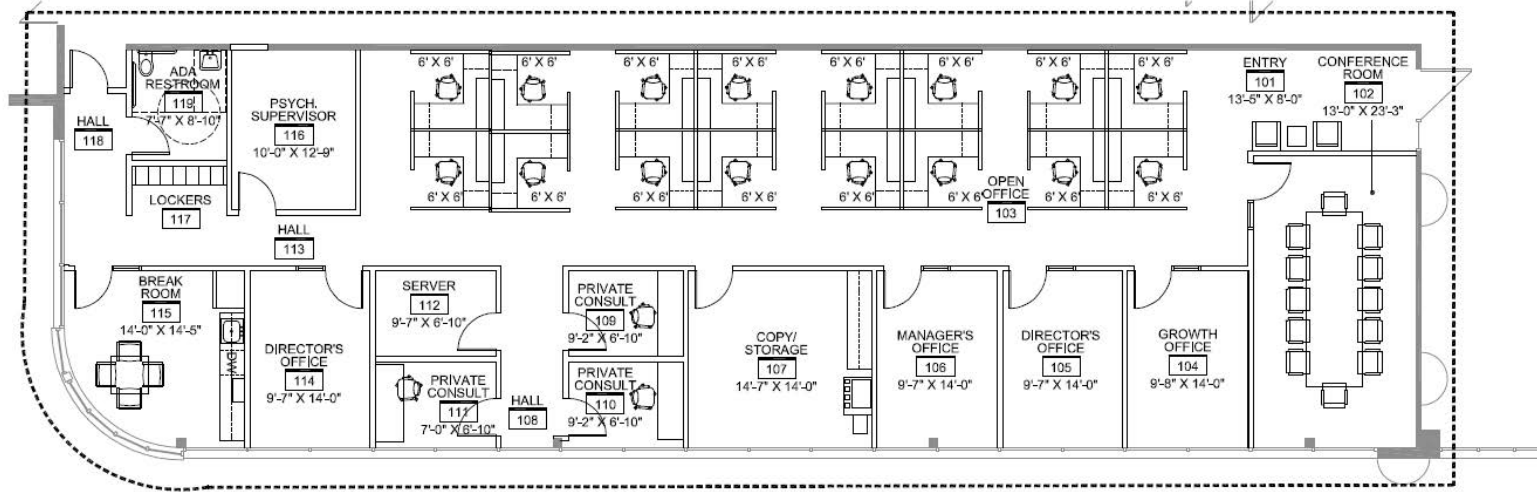
RJ Trowbridge
Senior Vice President
+1 913 469 4637
rj.trowbridge@jll.com

Avery Comeau
Associate
+1 913 927 9252
avery.comeau@jll.com

FLOOR PLANS

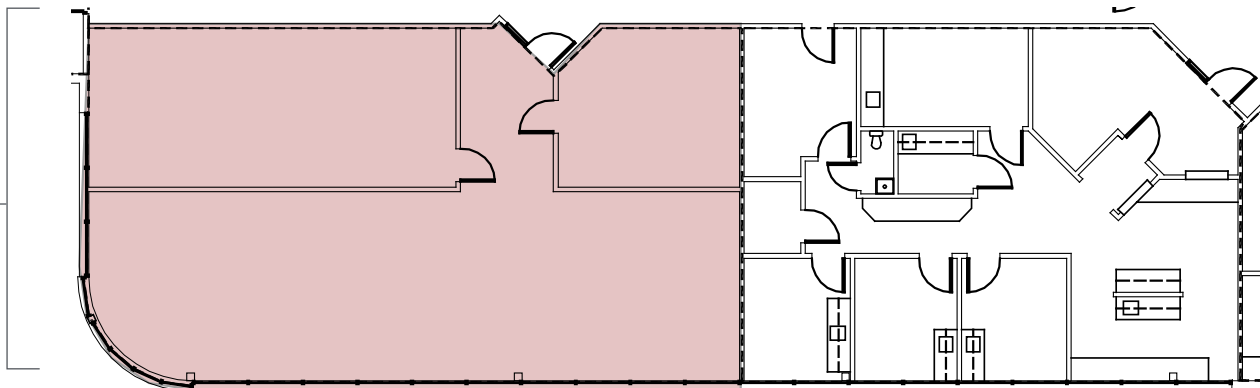
Suite 1300

4,095 RSF available



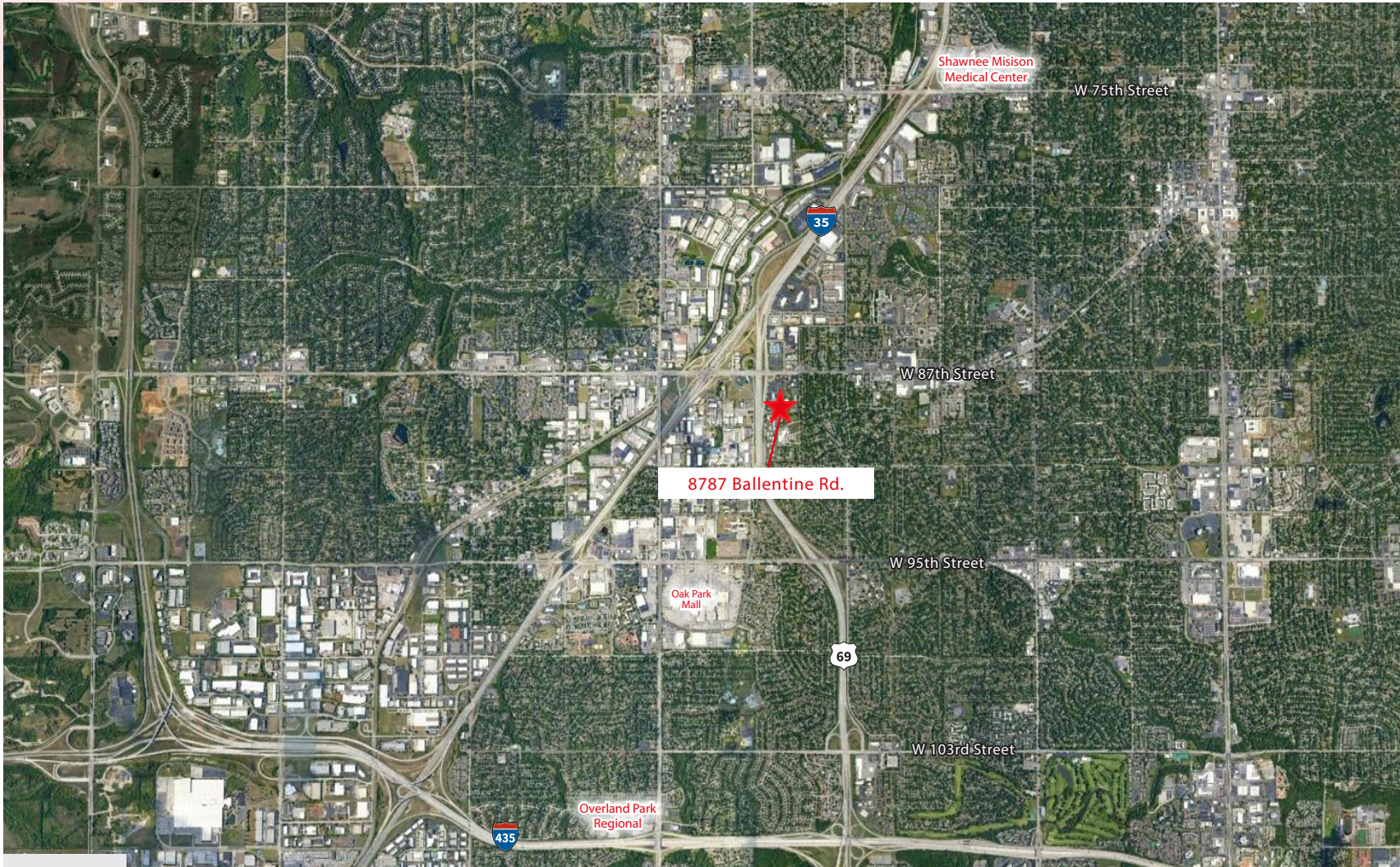
Suite 2200

2,284 RSF available



PROPERTY PHOTOS





For more information, contact:

RJ Trowbridge
Vice President
+1 913 469 4637
rj.trowbridge@am.jll.com

Avery Comeau
Associate
+1 913 927 9252
avery.comeau@jll.com

*Although information has been obtained from sources deemed reliable, JLL does not make any guarantees, warranties or representations, express or implied, as to the completeness or accuracy as to the information contained herein. Any projections, opinions, assumptions or estimates used are for example only. There may be differences between projected and actual results, and those differences may be material. JLL does not accept any liability for any loss or damage suffered by any party resulting from reliance on this information. If the recipient of this information has signed a confidentiality agreement with JLL regarding this matter, this information is subject to the terms of that agreement.
©2022. Jones Lang LaSalle IP, Inc. All rights reserved.

