

600 CLARK ROAD TEWKSBURY, MA



**2,227 - 10,029 SF OFFICE/MEDICAL/R&D SPACE
AVAILABLE FOR LEASE**

PROPERTY SPECIFICATIONS

BUILDING SIZE:	35,024 SF
AVAILABLE SPACE:	2,227 - 10,000 SF
PROPERTY TYPE:	MEDICAL/OFFICE/LIGHT LAB
YEAR BUILT:	1984
STORIES:	4
PARKING:	4 PER 1,000 SF

AVAILABILITY

2nd FLOOR:	2,227 SF
4th FLOOR:	2,743 - 10,000 SF

HIGHLIGHTS

- Recently Renovated Common Area
- Flexible Floor Plan and Terms
- Excellent Accessibility
- Corner Suite
- Potential Building Signage
- Professionally Managed by Eastport Real Estate Services

R.W. HOLMES
COMMERCIAL REAL ESTATE

FOR MORE INFORMATION CONTACT:

DAVID GILKIE, CCIM, SIOR
DGILKIE@RWHOLMES.COM
(508) 650-9905

MIKE OGASAPIAN
MIKEO@RWHOLMES.COM
(781) 439-5945

WWW.RWHOLMES.COM

LOBBY



SECOND FLOOR

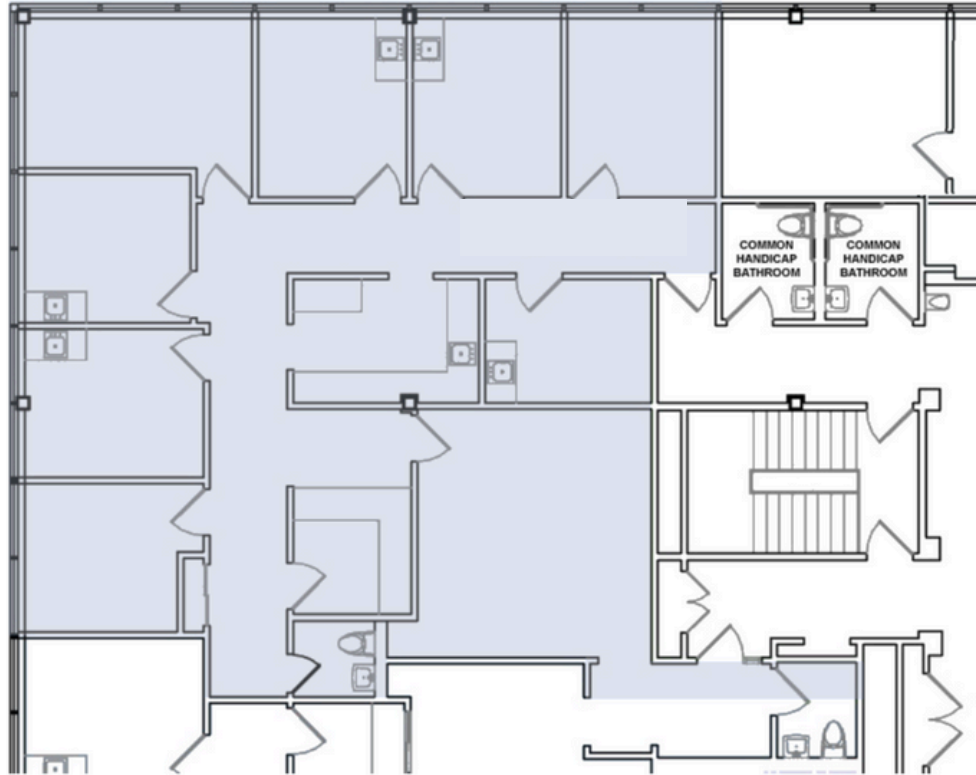


FOURTH FLOOR

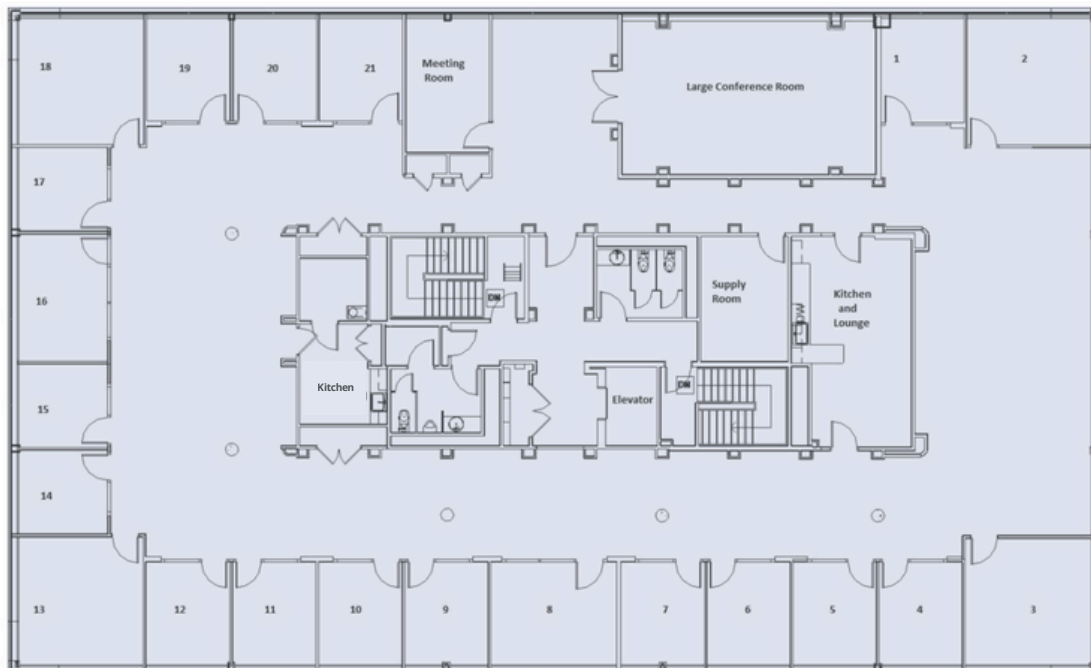


FLOOR PLAN

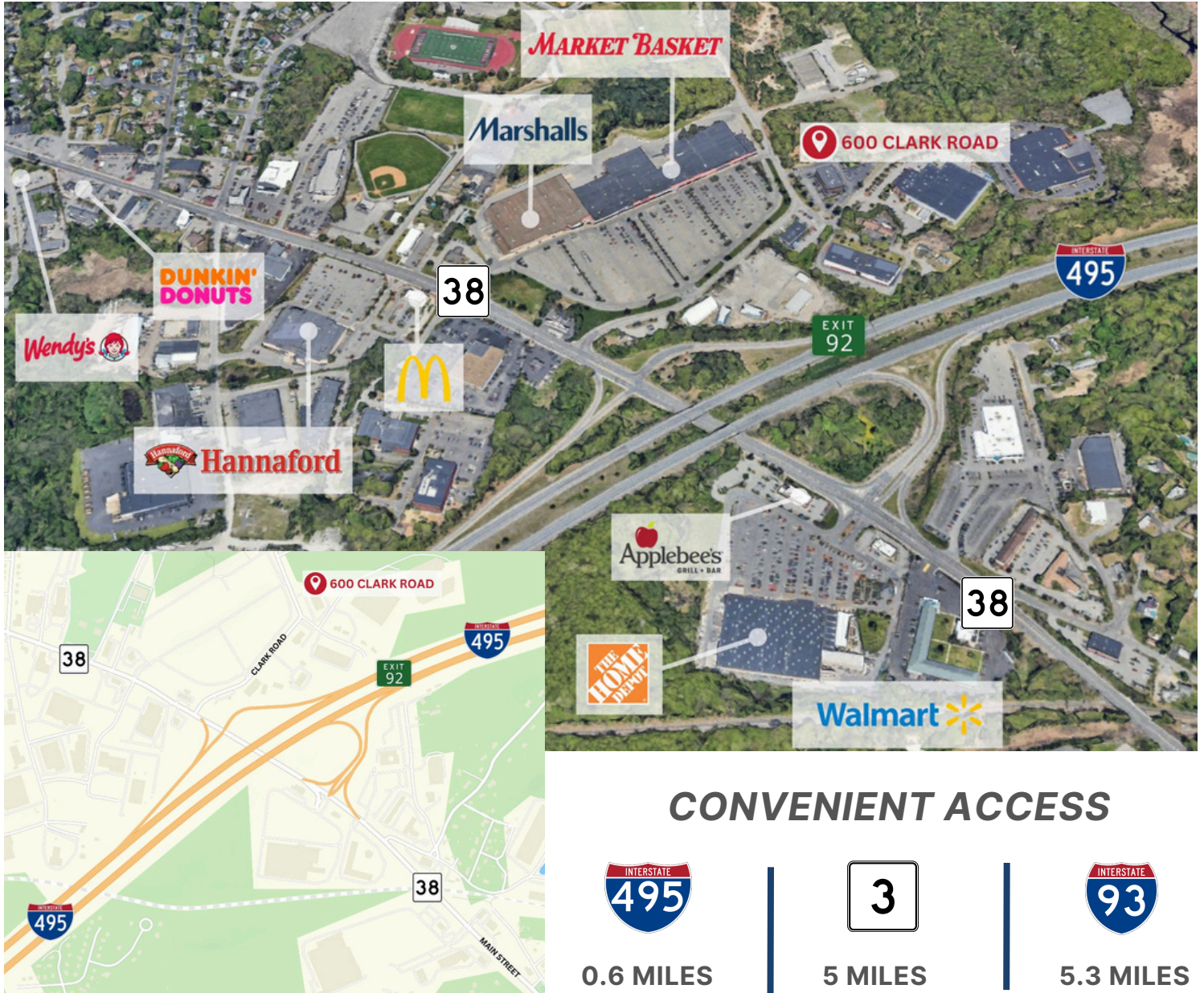
2ND FLOOR | 2,227 SF



4TH FLOOR | 2,743 - 10,029 SF



LOCATION & ACCESS



CONVENIENT ACCESS

		
0.6 MILES	5 MILES	5.3 MILES

R.W. HOLMES
COMMERCIAL REAL ESTATE

FOR MORE INFORMATION CONTACT:

DAVID GILKIE, CCIM, SIOR
DGILKIE@RWHOLMES.COM
(508) 650-9905

MIKE OGASAPIAN
MIKEO@RWHOLMES.COM
(781) 439-5945