

1027 GREENFIELD DR, SUITES D & F

FOR LEASE | 3,000 SF - 3,125 SF TOTAL = 6,125 SF



EXCLUSIVELY LISTED BY

DARRIN HINES
dhines@ip-cre.com
619.596.1880
Lic. #01982233

NOLAN NARAIN
nolan.narain@ip-cre.com
619.980.5492
Lic. #02191321



PROPERTY HIGHLIGHTS



1027 Greenfield Dr, Suites D & F, El Cajon CA 92021



Total SF: ± 6,125

Suite D: ± 3,000 SF

Suite F: ± 3,125 SF

Units are contiguous and can be leased together or separately



Lease Rate: Contact Broker



200 amps, 3 Phase Power



2 (12' x 14') Grade Level Doors



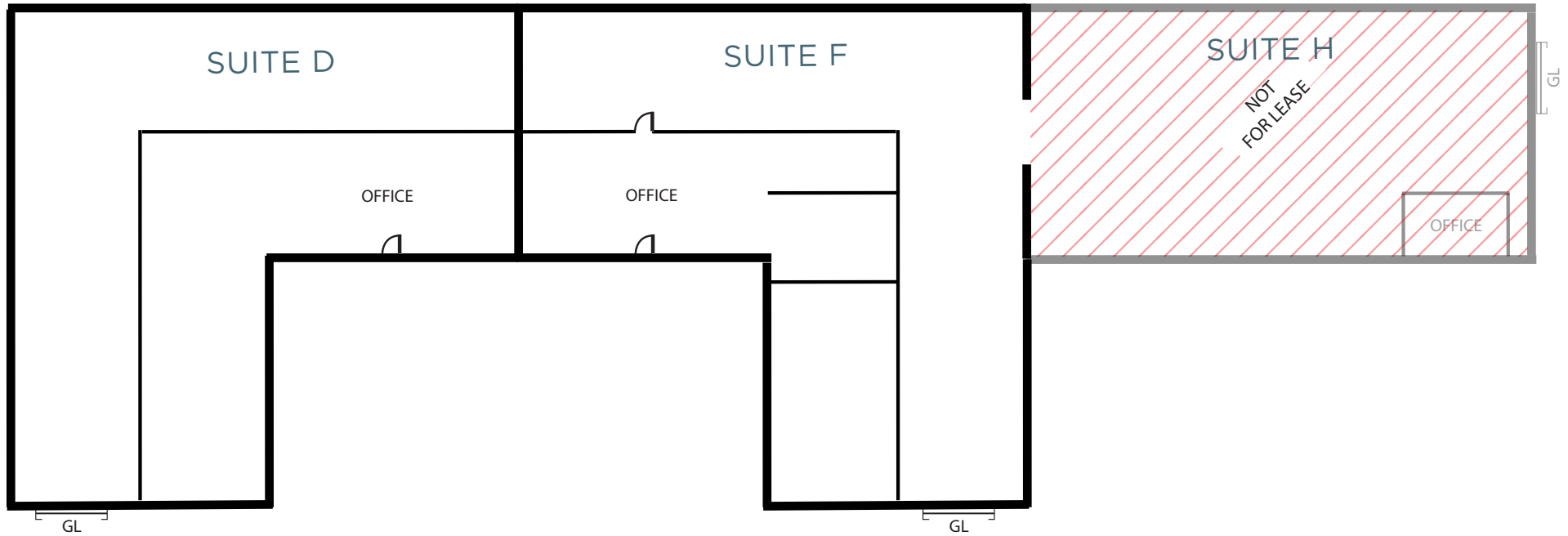
18' Clear Height



Easy Access to Hwy 67, 52 and I-8

Information herein has been obtained from sources deemed reliable, however its accuracy cannot be guaranteed. The user is required to conduct their own due diligence and verification.

FLOOR PLAN



Information herein has been obtained from sources deemed reliable, however its accuracy cannot be guaranteed. The user is required to conduct their own due diligence and verification.



1027

GREENFIELD DR
SUITES D & F



FOR MORE INFORMATION PLEASE CONTACT

DARRIN HINES
dhines@ip-cre.com
619.596.1880
Lic. #01982233

NOLAN NARAIN
nolan.narain@ip-cre.com
619.980.5492
Lic. #02191321

