



Accelerating success.

Oquirrh School Building

350 S. 400 E. Salt Lake City, Utah 84111

Office Available For Sublease



Colliers

111 S. Main St., Suite 2200
Salt Lake City, UT 84111
Main: +1 801 947 8300
colliers.com



Contact:

Tanner Riedel
Executive
+1 801 947 8363
tanner.riedel@colliers.com

Chris Kirk, Sior
Managing Director
+1 801 947 8385
chris.kirk@colliers.com

Oquirrh School Building

The Story

The Oquirrh School Building was originally constructed in 1894 and underwent a major award-winning renovation in 2009. The renovation gave the building LEED gold certification and was focused on preserving the beautiful pre-modern architecture and feel of the building, while giving it the same climate control and tenant safety measures you would find in a newly constructed, high end office building. The building has exposed brick throughout, a vaulted ceiling with an atrium on the 4th floor, a beautiful first floor lobby, and has a historic feel about it that is truly one of a kind. The building has free on-site parking and a variety of signage options available.



Colliers

Highlights

Oquirrh School Building

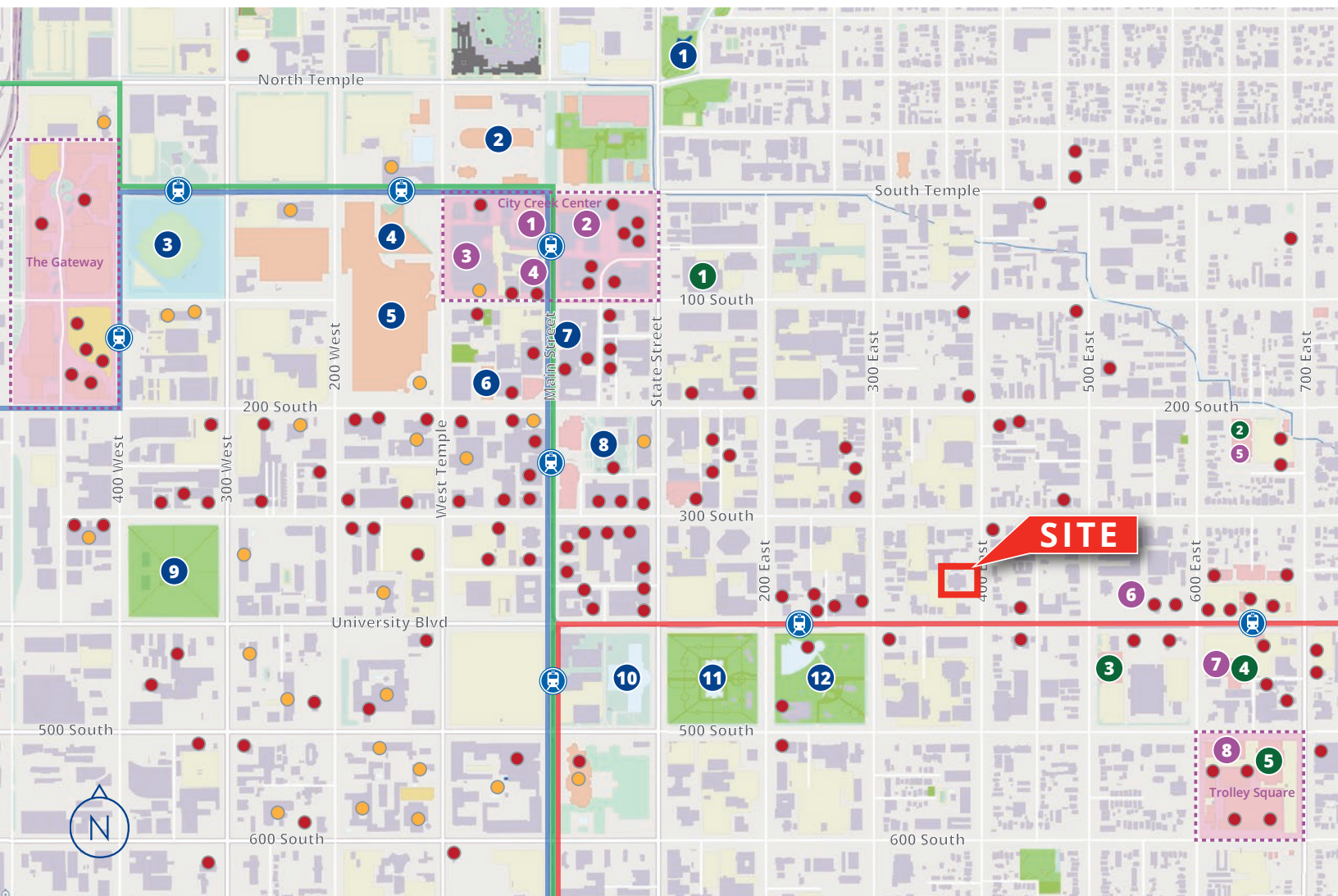
- Available: 5,000 - 21,472 SF
- Asking Rate: Contact listing agent for details
- Free Onsite Parking Ratio: 2 stalls per 1,000 SF
- Located in the CBD periphery, within minutes of the heart of downtown Salt Lake
- Flexible lease terms available



Colliers

Oquirrh School Building

Downtown SLC



<ul style="list-style-type: none"> ● Restaurant/Food Service ● Hotel/Motel 	Civic	Grocery	Retail
	<ul style="list-style-type: none"> 1 City Creek Park 2 Temple Square 3 Arena 4 Abravanel Hall 5 Salt Palace Convention Center 6 Capitol Theatre 	<ul style="list-style-type: none"> 1 Harmons 2 Sprouts 3 Smiths 4 Trader Joes 5 Whole Foods 	<ul style="list-style-type: none"> 1 H&M 2 Macys 3 Nordstrom 4 Walgreens 5 Ross 6 Walgreens 7 Ace Hardware 8 Pottery Barn

Demographics (2022)

146k
Population in 3-Mile Radius

4.7%
Population Growth by 2027

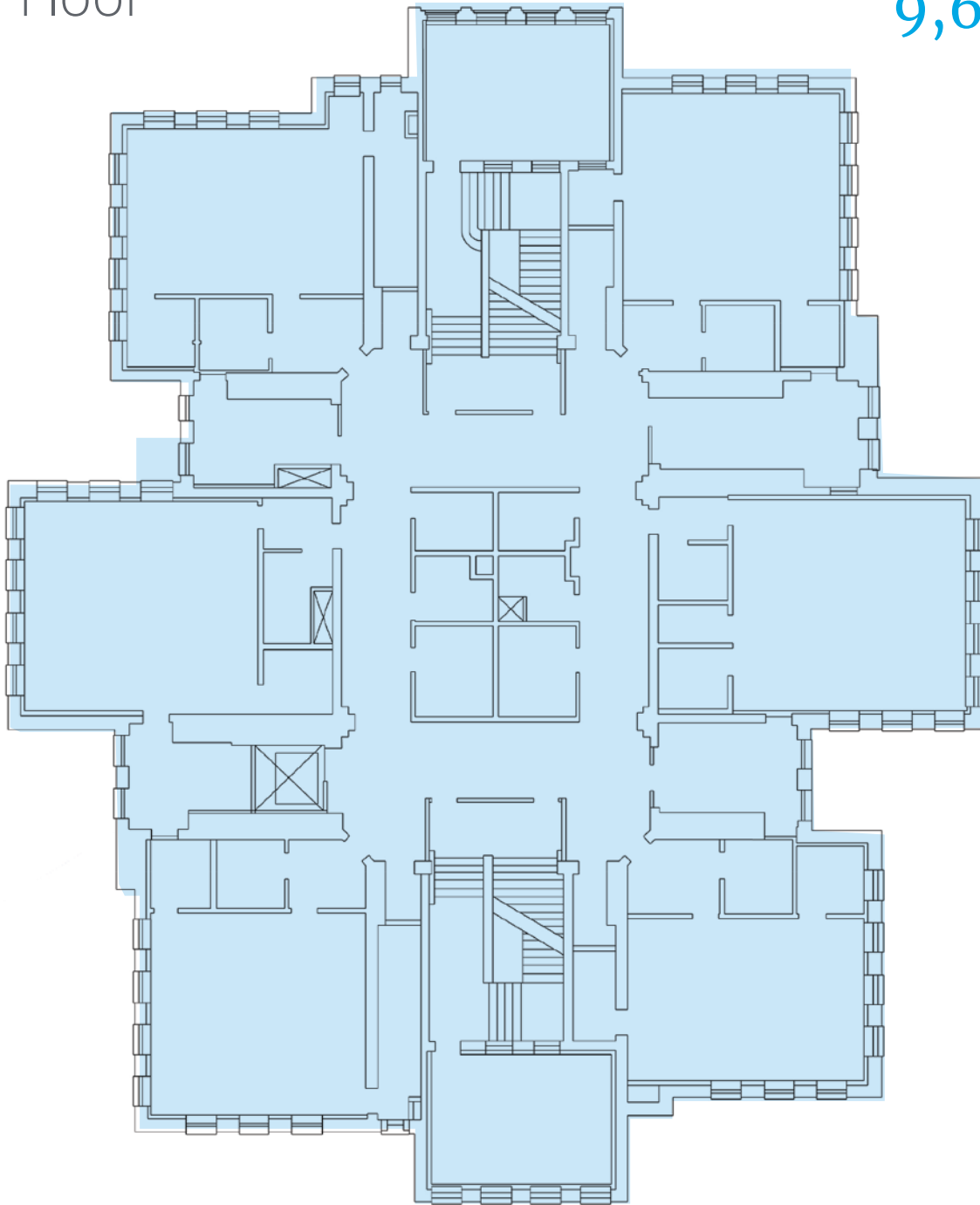
30.9
Median Age

\$65.2k
Median Household Income

Floor Plan

3rd Floor

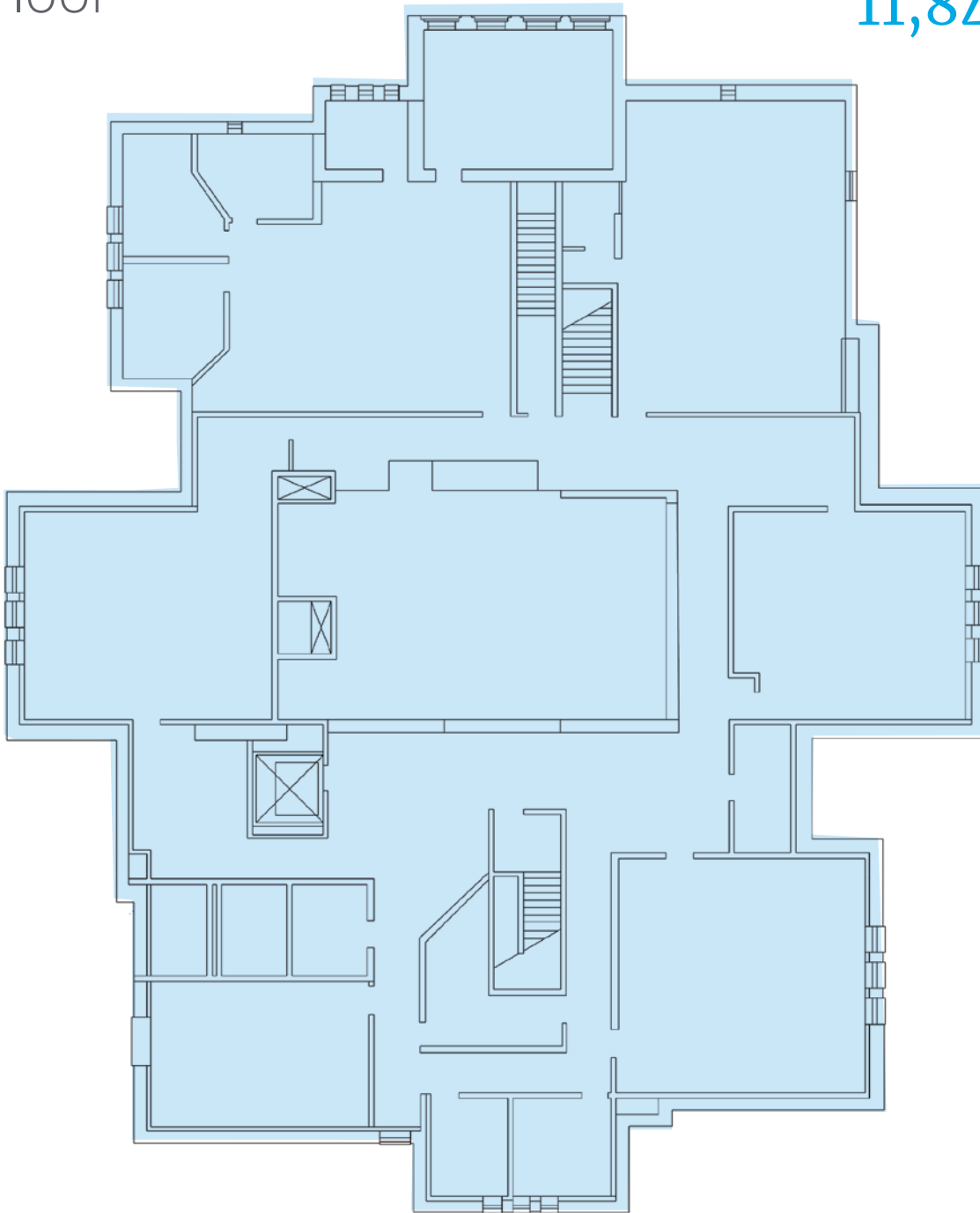
9,625 SF



Floor Plan

4th Floor

11,847 SF



Virtual
Tour

Oquirrh School Building


350 S. 400 E. Salt Lake City, Utah 84111

Office Building Available


1 minute to
SLC's Central
Business District


4 minutes to
UTA TRAX Station

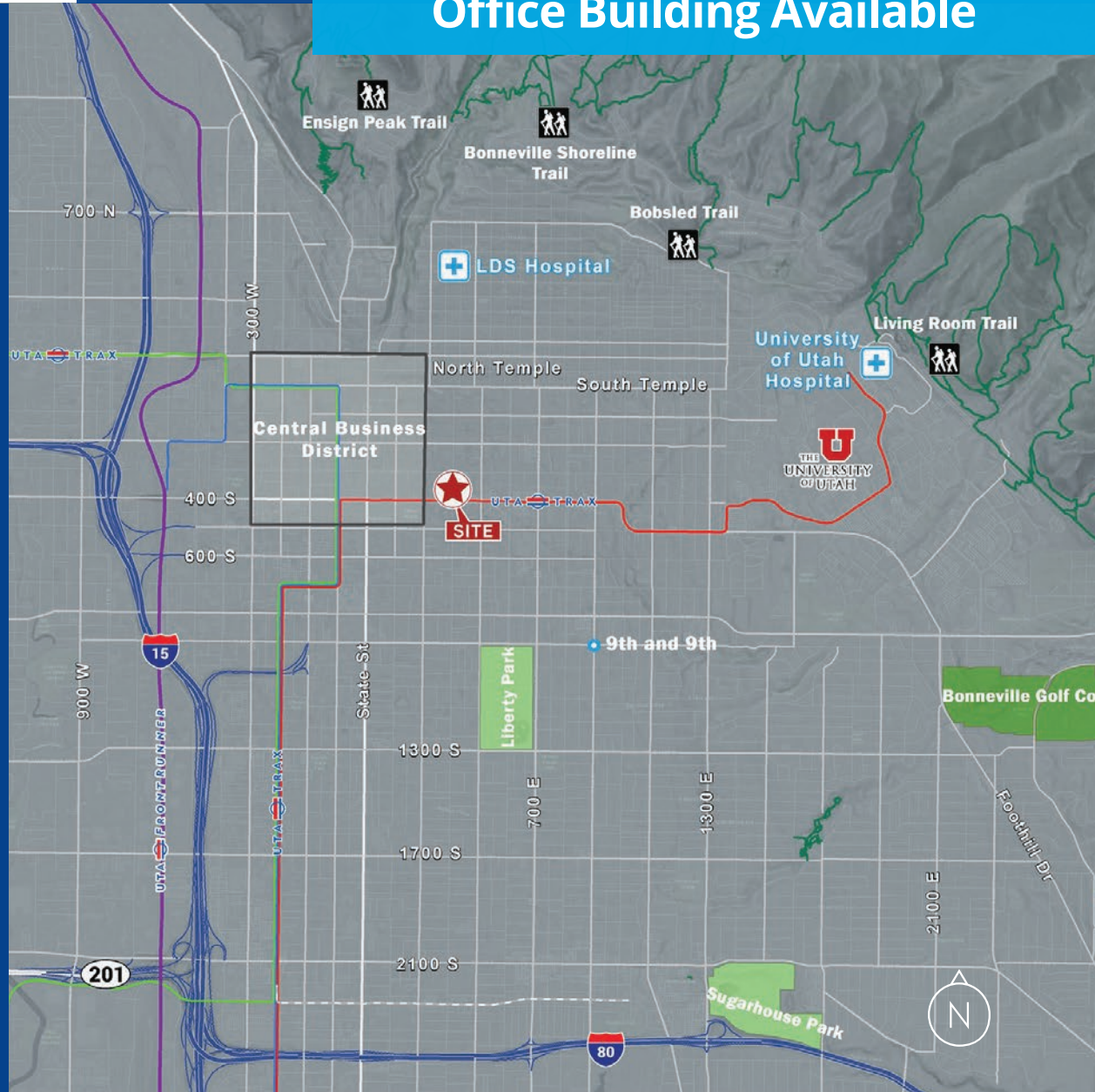

5 minutes to
Interstate 15


8 minutes to
University of Utah


10 minutes to
Numerous Hiking
& Biking Trails


12 minutes to
SLC International


45 minutes to
6 Different World
Class Ski Resorts



Contact:

Tanner Riedel
Executive
+1 801 947 8363
tanner.riedel@colliers.com

Chris Kirk, sior
Managing Director
+1 801 947 8385
chris.kirk@colliers.com

Colliers
111 S. Main St., Suite 2200
Salt Lake City, UT 84111
Main: +1 801 947 8300
colliers.com