



BEST FULL SERVICE OFFICE RATE IN METAIRIE CBD

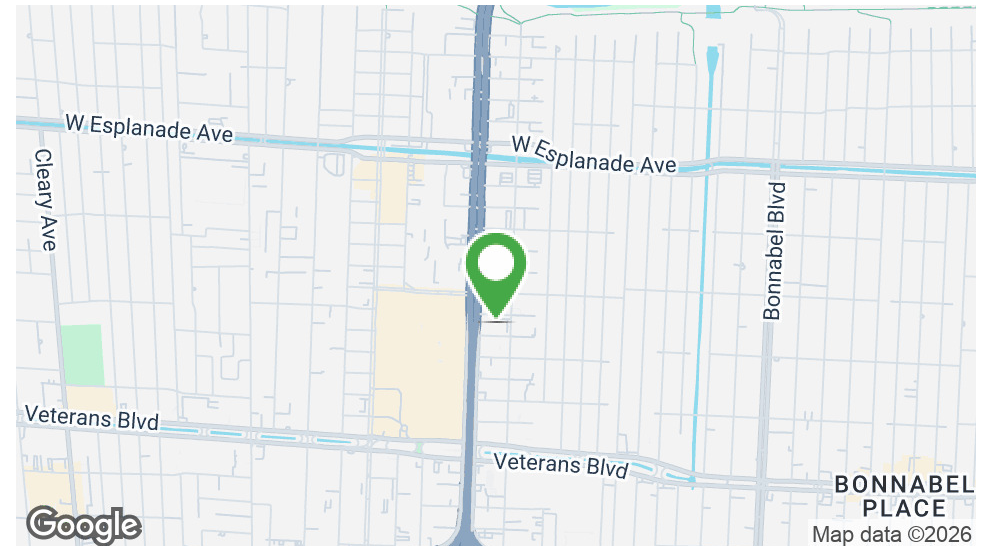
3200 Ridgelake Drive, Metairie, LA 70002

MATT EATON, CCIM • PARTNER

OFFICE: 504.414.0703

MOBILE: 504.339.2136

matt@matteatonccim.com



PROPERTY DESCRIPTION

Two spaces are available in this four-story office building in the heart of Metairie, LA. The building is located just a half block from the Causeway and across from Lakeside Mall.

The building has been recently renovated and upgraded with fresh paint. Included in the building's amenities is ample free parking in the building's garage and surface lot. This location is in a safe area and business-friendly environment with easy access to transportation routes, the Causeway and I-10.

SPACES	LEASE RATE	SPACE SIZE
Suite 402	\$19.00 SF/yr	1,394 SF
Suite 101	\$19.00 SF/yr	534 SF

DEMOGRAPHICS	1 MILE	3 MILES	5 MILES
Total Households	8,029	54,464	109,297
Total Population	17,372	122,249	248,695
Average HH Income	\$99,532	\$106,304	\$100,856

OFFICE BUILDING SUITES FOR LEASE

PROPERTY SUMMARY





BEST FULL SERVICE OFFICE RATE IN METAIRIE CBD

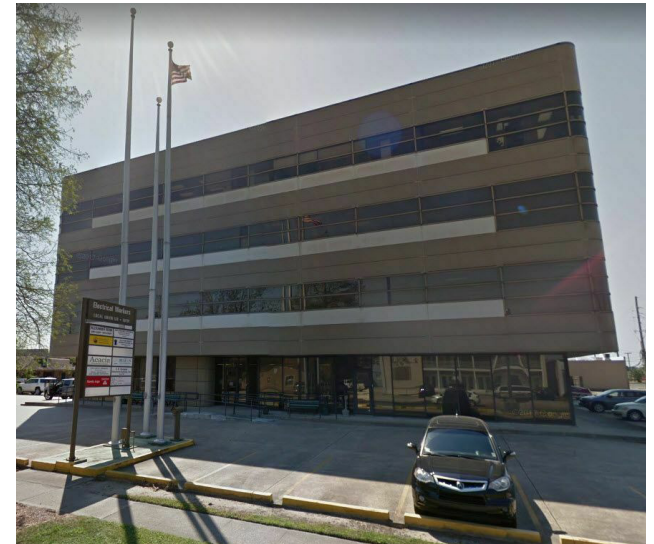
3200 Ridgelake Drive, Metairie, LA 70002

MATT EATON, CCIM • PARTNER

OFFICE: 504.414.0703

MOBILE: 504.339.2136

matt@matteatonccim.com



OFFICE BUILDING SUITES FOR LEASE

ADDITIONAL PHOTOS

SOUTHEAST COMMERCIAL REAL ESTATE | 2310 19th Street Gulfport, MS 39501 | <https://southeastcre.com>



SOUTHEAST
COMMERCIAL
REAL ESTATE



BEST FULL SERVICE OFFICE RATE IN METAIRIE CBD

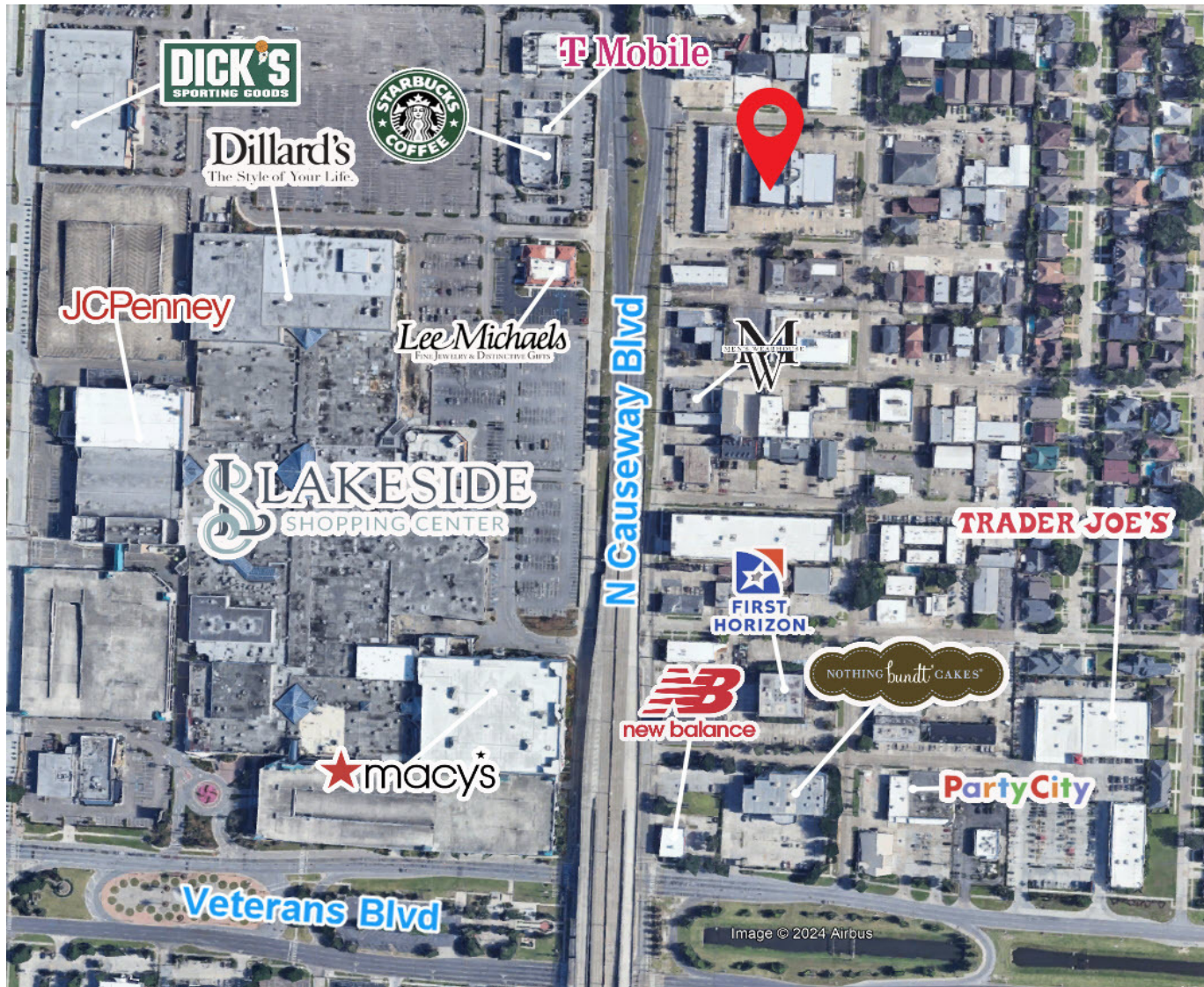
3200 Ridgelake Drive, Metairie, LA 70002

MATT EATON, CCIM • PARTNER

OFFICE: 504.414.0703

MOBILE: 504.339.2136

matt@matteatonccim.com



OFFICE BUILDING SUITES FOR LEASE

AERIAL

SOUTHEAST COMMERCIAL REAL ESTATE | 2310 19th Street Gulfport, MS 39501 | <https://southeastcre.com>



SOUTHEAST
COMMERCIAL
REAL ESTATE



BEST FULL SERVICE OFFICE RATE IN METAIRIE CBD

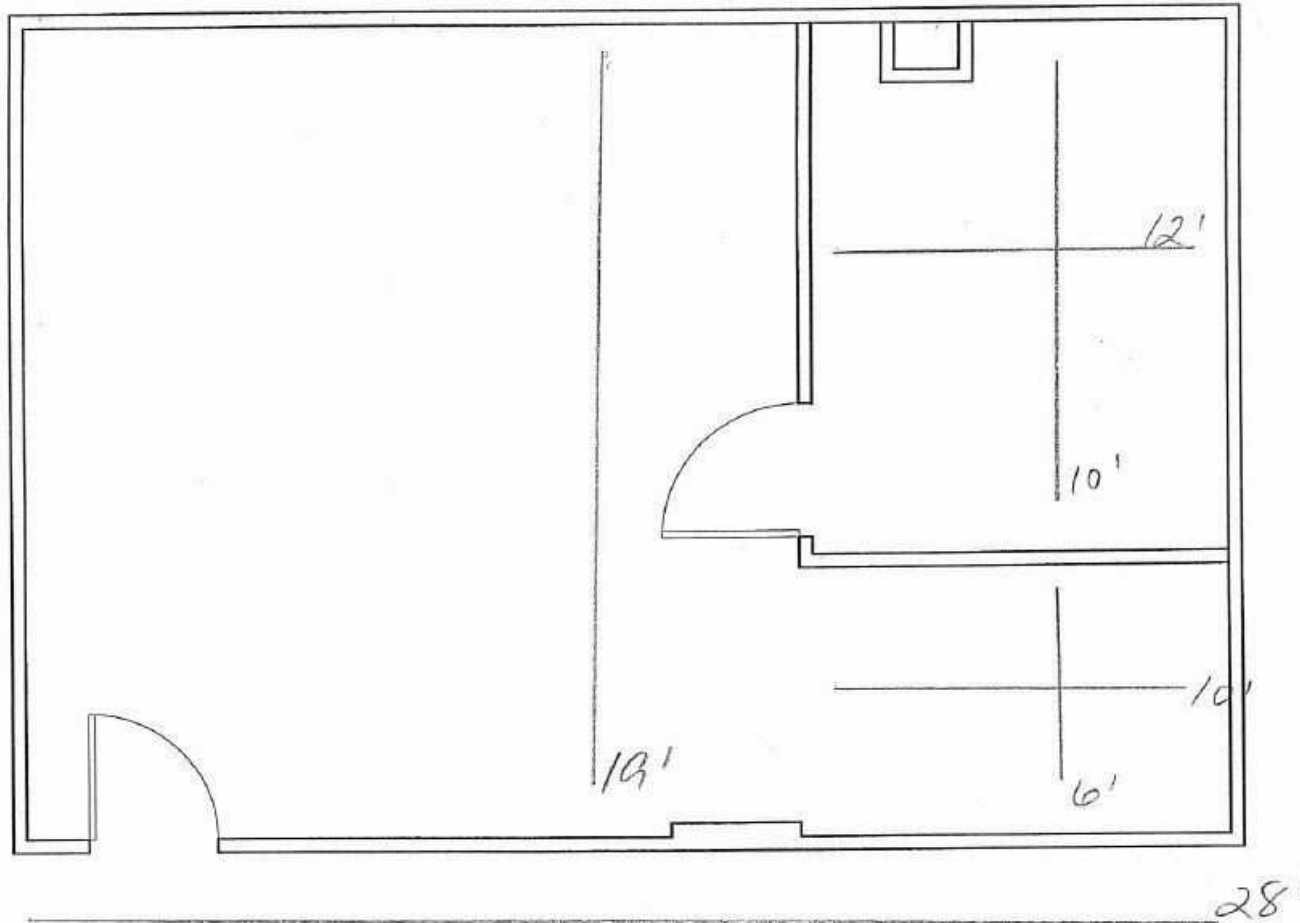
3200 Ridgelake Drive, Metairie, LA 70002

MATT EATON, CCIM • PARTNER

OFFICE: 504.414.0703

MOBILE: 504.339.2136

matt@matteatonccim.com



543.57 USABLE SQ. FT.

OFFICE BUILDING FOR LEASE

SUITE 101 FLOOR PLAN

SOUTHEAST COMMERCIAL REAL ESTATE | 2310 19th Street Gulfport, MS 39501 | <https://southeastcre.com>



**SOUTHEAST
COMMERCIAL**
REAL ESTATE



BEST FULL SERVICE OFFICE RATE IN METAIRIE CBD

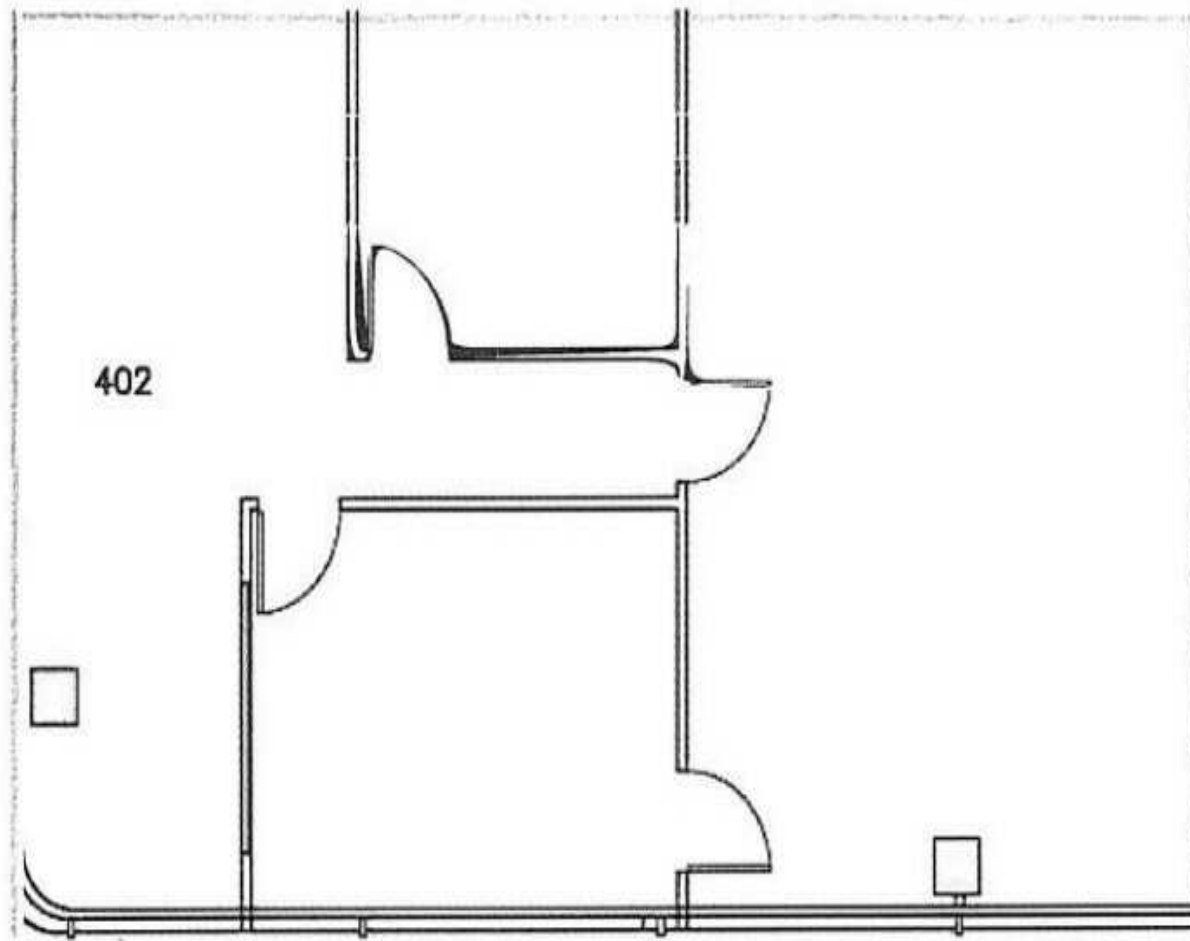
3200 Ridgelake Drive, Metairie, LA 70002

MATT EATON, CCIM • PARTNER

OFFICE: 504.414.0703

MOBILE: 504.339.2136

matt@matteatonccim.com



OFFICE BUILDING SUITES FOR LEASE

SUITE 402 FLOOR PLAN

SOUTHEAST COMMERCIAL REAL ESTATE | 2310 19th Street Gulfport, MS 39501 | <https://southeastcre.com>



**SOUTHEAST
COMMERCIAL**
REAL ESTATE



BEST FULL SERVICE OFFICE RATE IN METAIRIE CBD

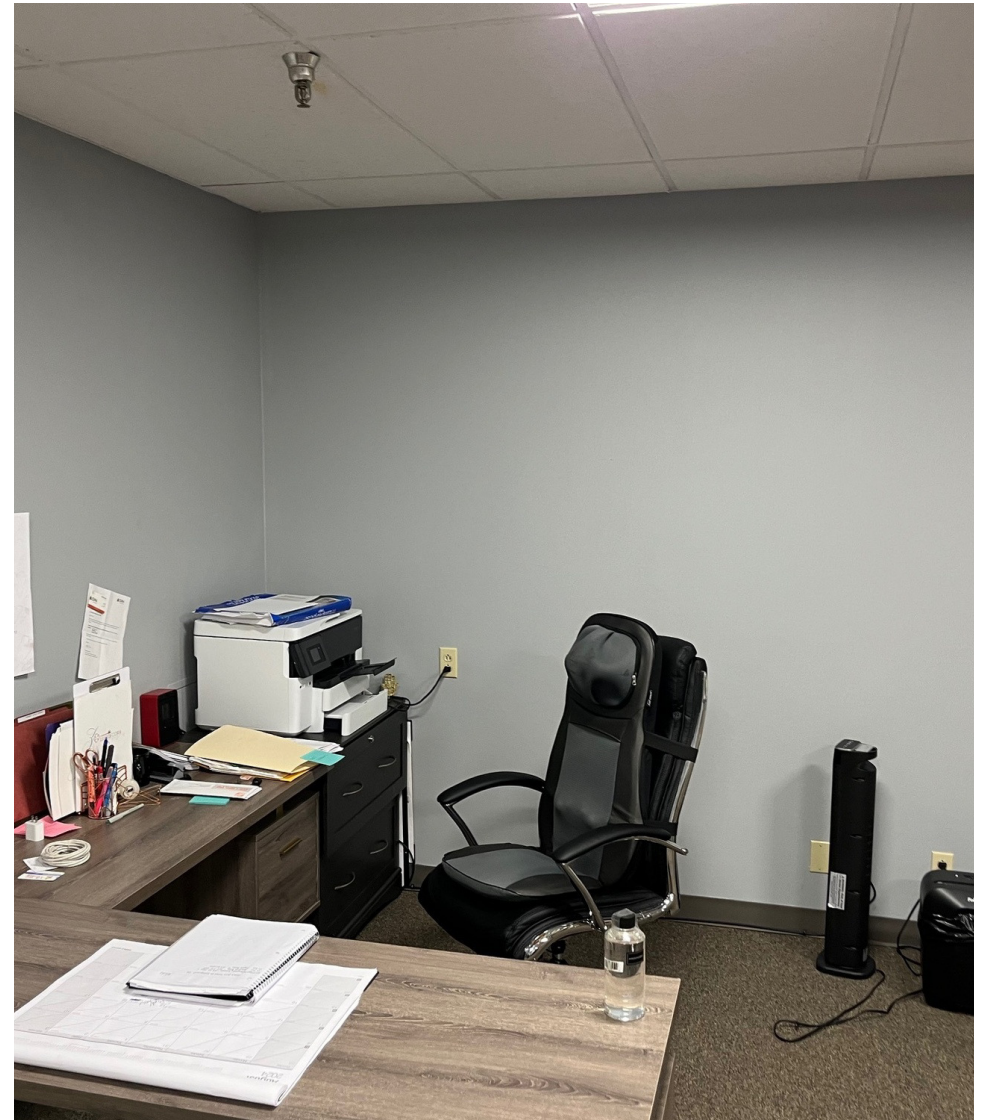
3200 Ridgelake Drive, Metairie, LA 70002

MATT EATON, CCIM • PARTNER

OFFICE: 504.414.0703

MOBILE: 504.339.2136

matt@matteatonccim.com



OFFICE BUILDING SUITES FOR LEASE

SUITE 101

SOUTHEAST COMMERCIAL REAL ESTATE | 2310 19th Street Gulfport, MS 39501 | <https://southeastcre.com>



**SOUTHEAST
COMMERCIAL**
REAL ESTATE



BEST FULL SERVICE OFFICE RATE IN METAIRIE CBD

3200 Ridgelake Drive, Metairie, LA 70002

MATT EATON, CCIM • PARTNER

OFFICE: 504.414.0703

MOBILE: 504.339.2136

matt@matteatonccim.com



OFFICE BUILDING FOR LEASE

SUITE 402

SOUTHEAST COMMERCIAL REAL ESTATE | 2310 19th Street Gulfport, MS 39501 | <https://southeastcre.com>



**SOUTHEAST
COMMERCIAL**
REAL ESTATE



BEST FULL SERVICE OFFICE RATE IN METAIRIE CBD

3200 Ridgelake Drive, Metairie, LA 70002

MATT EATON, CCIM • PARTNER

OFFICE: 504.414.0703

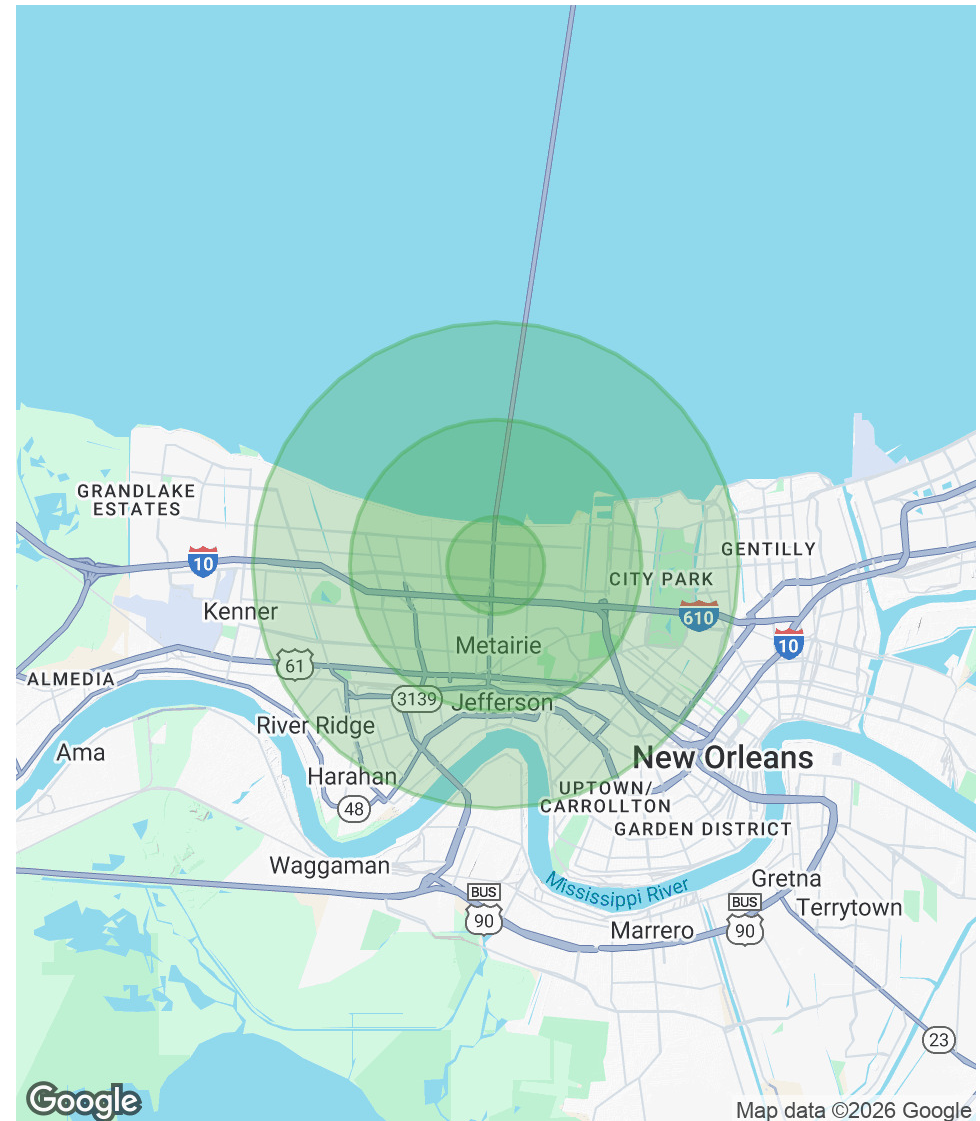
MOBILE: 504.339.2136

matt@matteatonccim.com

POPULATION	1 MILE	3 MILES	5 MILES
Total Population	17,372	122,249	248,695
Average Age	42	42	42
Average Age (Male)	41	41	41
Average Age (Female)	44	43	43

HOUSEHOLDS & INCOME	1 MILE	3 MILES	5 MILES
Total Households	8,029	54,464	109,297
# of Persons per HH	2.2	2.2	2.3
Average HH Income	\$99,532	\$106,304	\$100,856
Average House Value	\$389,782	\$418,653	\$386,669

Demographics data derived from AlphaMap



OFFICE BUILDING SUITES FOR LEASE

DEMOGRAPHICS MAP & REPORT

