

# 10198 RIVERFORD RD

FOR LEASE | CONTRACTOR OFFICE & STORAGE PROPERTY



EXCLUSIVELY LISTED BY

AIDAN JAMES  
aidan.james@ip-cre.com  
619.631.8661  
Lic. #02060510

SHAYAN BAHRI  
shayan.bahri@ip-cre.com  
818.292.4657  
Lic. #02149868

  
INLAND PACIFIC

# PROPERTY HIGHLIGHTS



10198 Riverford Rd, Lakeside CA 92040



± 2,200 SF Office on ± 11,500 SF Lot



Lease Rate: Withheld



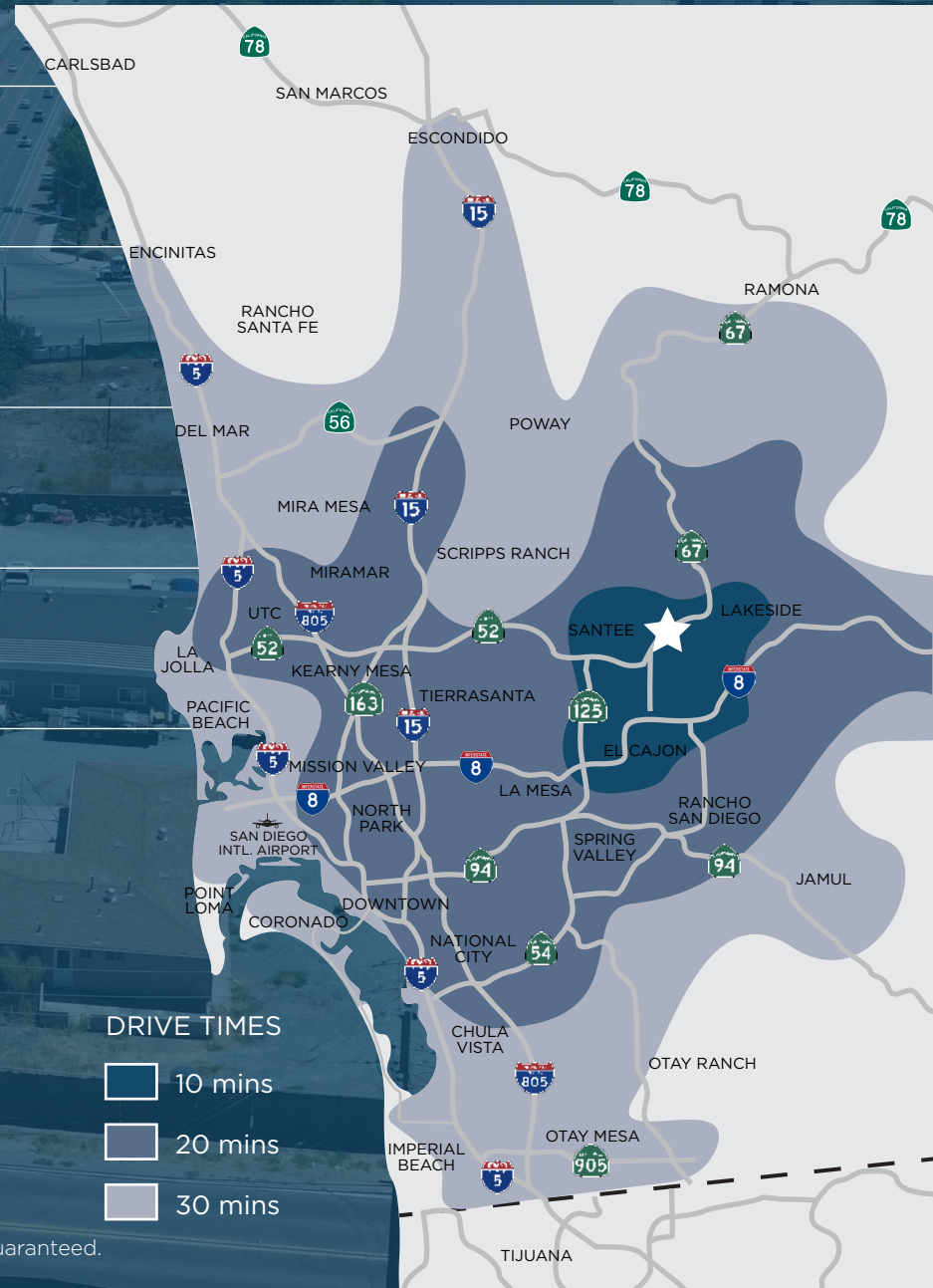
Corner Lot: Fenced & Gated



Zoning: S88 LAKESIDE



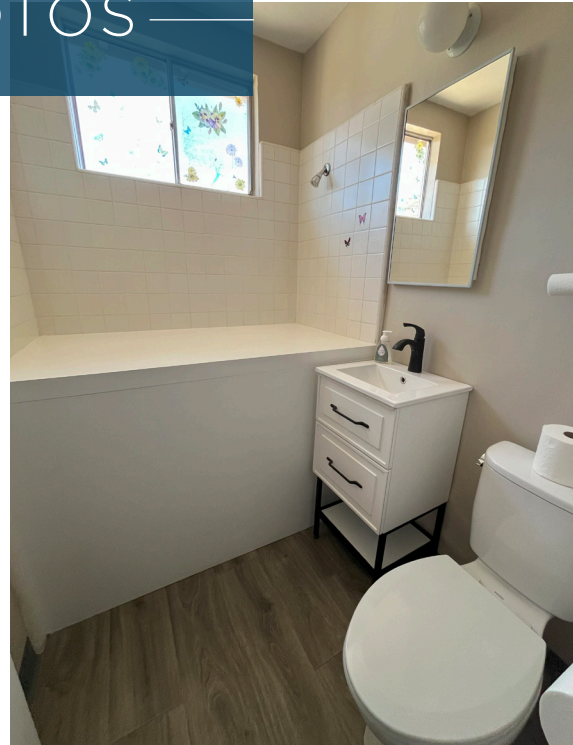
Proximity to I-8 and Highways 67, 52 & 125



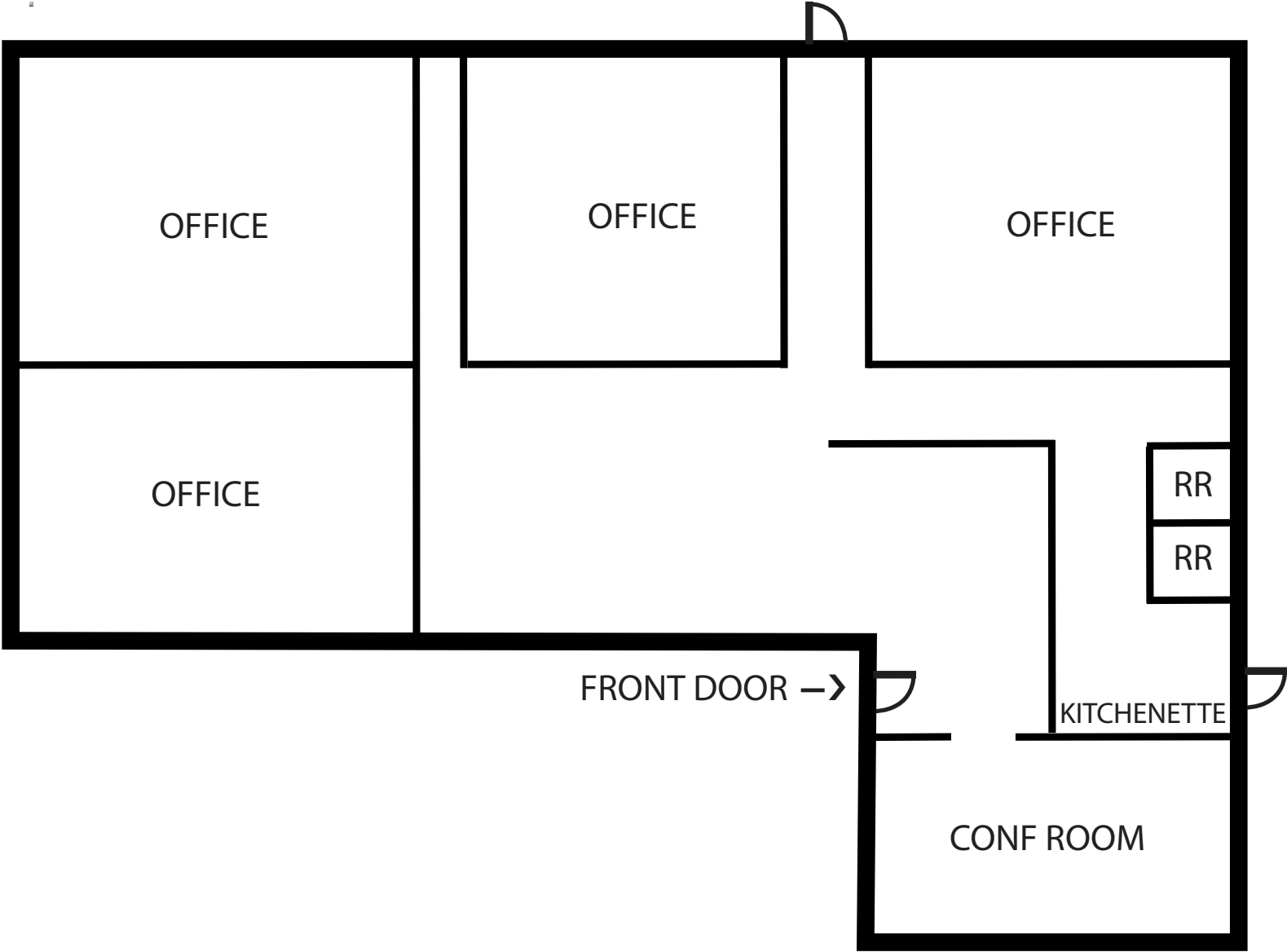
Information herein has been obtained from sources deemed reliable, however its accuracy cannot be guaranteed.  
The user is required to conduct their own due diligence and verification.



PROPERTY  
PHOTOS



# FLOOR PLAN



# CORPORATE NEIGHBORS



- ① RDO EQUIPMENT
- ② AGC APPRENTICESHIP HQ
- ③ CHRISTIAN BROTHERS
- ④ PEPSICO
- ⑤ RIVER RUN WEST  
200,000 SF INDUSTRIAL PARK

**10198**  
Riverford Rd

- ⑥ 37 AC HILLSIDE MEADOWS PROJECT  
142 SINGLE FAMILY HOME DEVELOPMENT
- ⑦ RIVER RUN EAST  
200,000 SF + CLASS A INDUSTRIAL PARK
- ⑧ COSTCO DISTRIBUTION CENTER
- ⑨ TURNING POINT



FOR MORE INFORMATION PLEASE CONTACT

AIDAN JAMES

aidan.james@ip-cre.com

619.631.8661

Lic. #02060510

SHAYAN BAHRI

shayan.bahri@ip-cre.com

818.292.4657

Lic. #02149868



Information herein has been obtained from sources deemed reliable, however its accuracy cannot be guaranteed. The user is required to conduct their own due diligence and verification.