



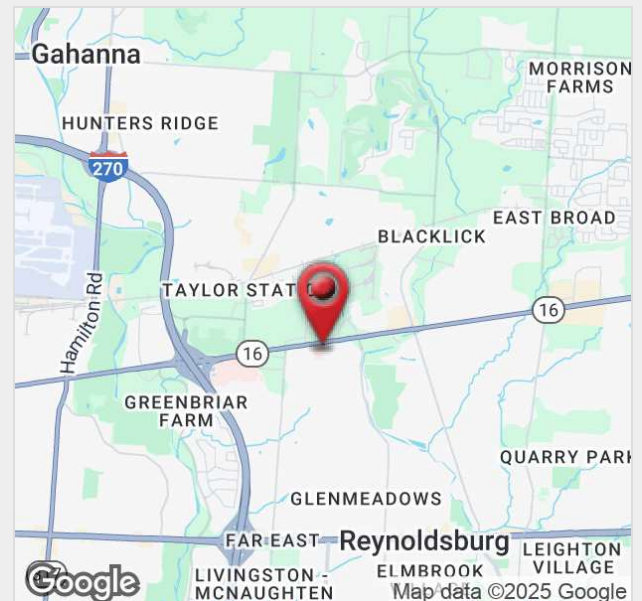
6503 E Broad St

Columbus, Ohio 43213

Property Features

- Investment or Owner-Occupant Opportunity
- ±10,490 SF Single-Story Medical Office Building
- Building is Currently Split Into Two Suites: ±3,350 SF and ±6,530 SF
- Direct Access from Parking Lot with 76 Surface Parking Spaces
- Private Employee Entrances
- High Speed Internet and Security System
- Building and Monument Signage Available
- Built in 2009 | Situated on ±1.12 Acres
- Access to I-270 Within 1 Mile | Numerous Nearby Amenities

Sale Price: \$2,400,000



For more information:

Andrew Green

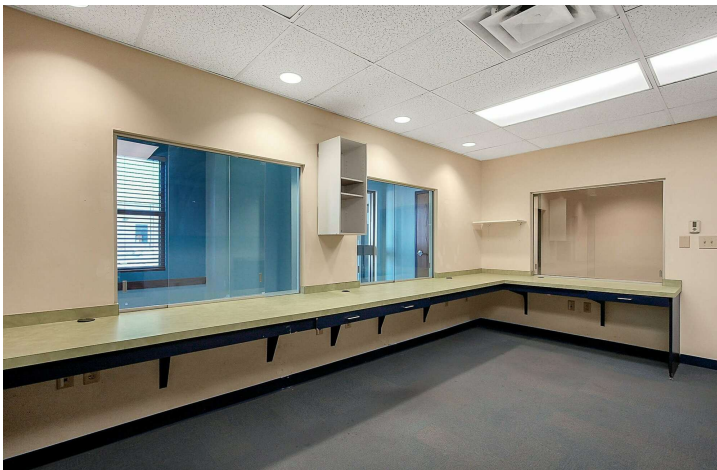
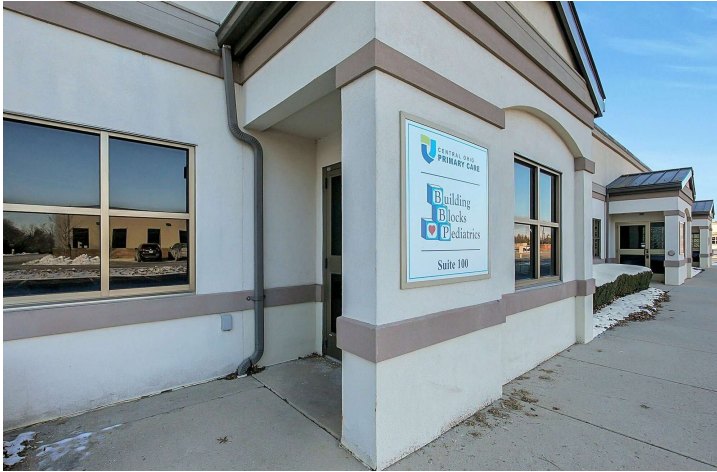
614 629 5232 • agreen@ohioequities.com

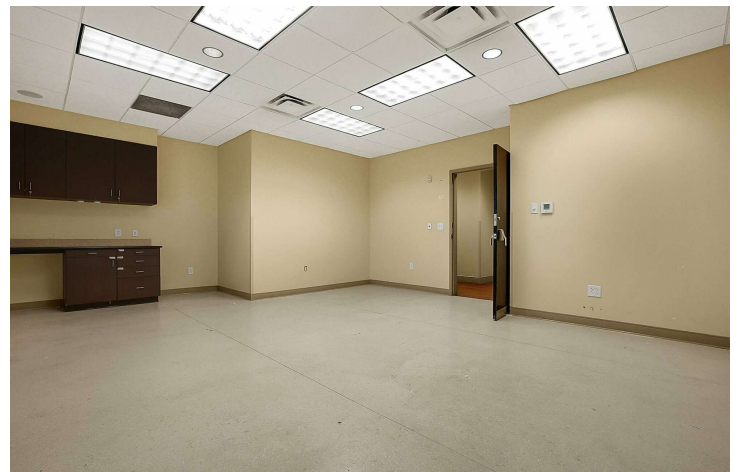
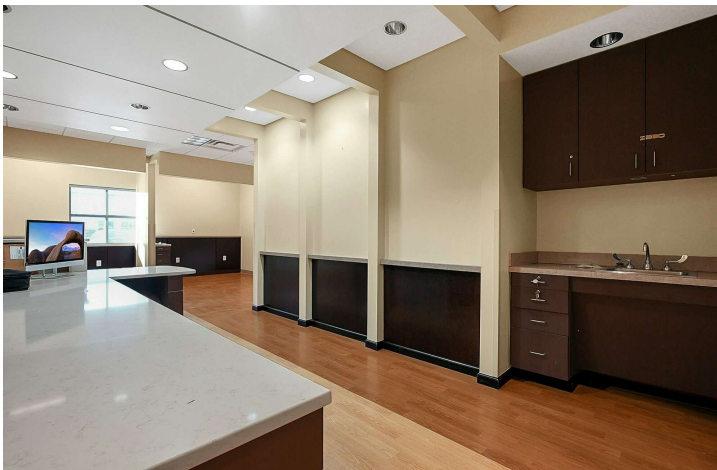
Peter Merkle

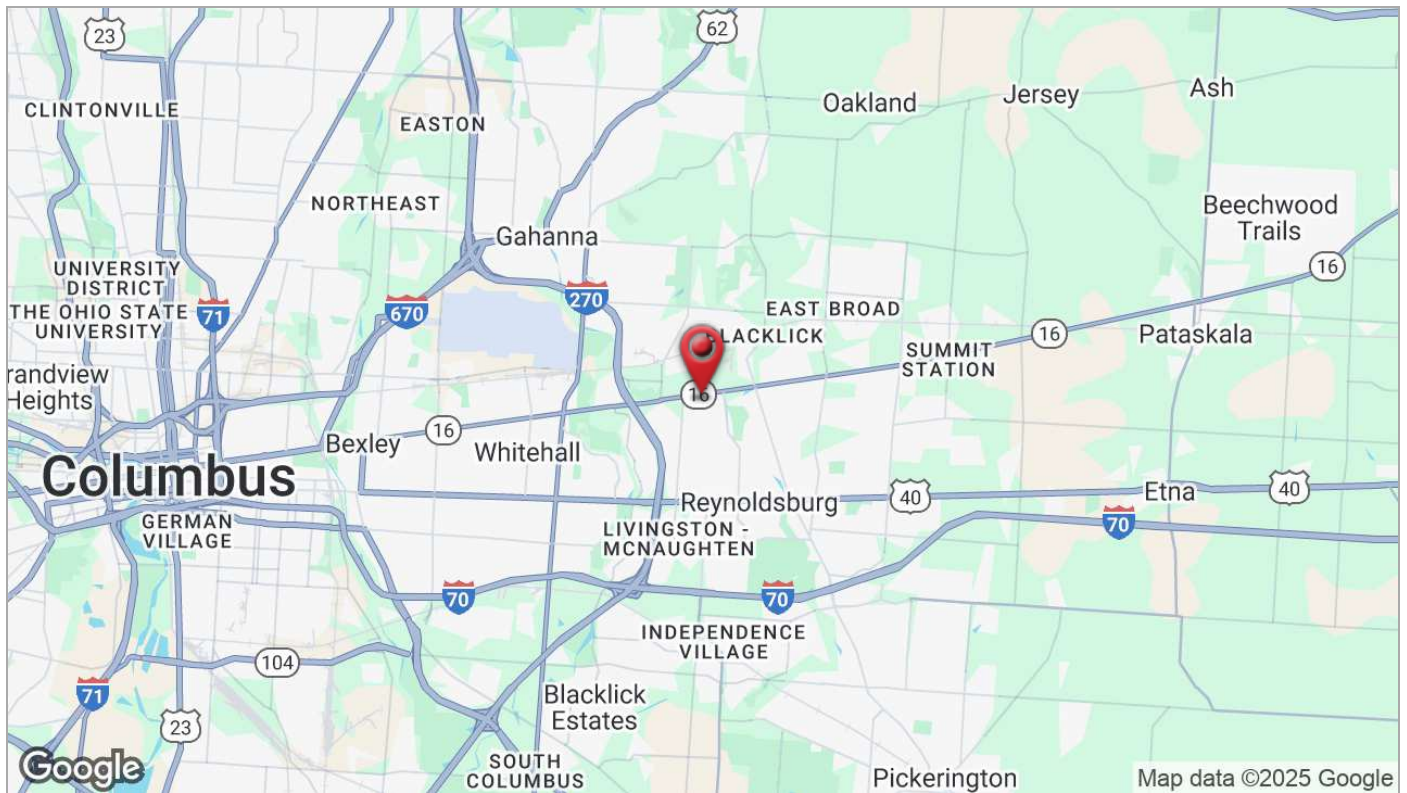
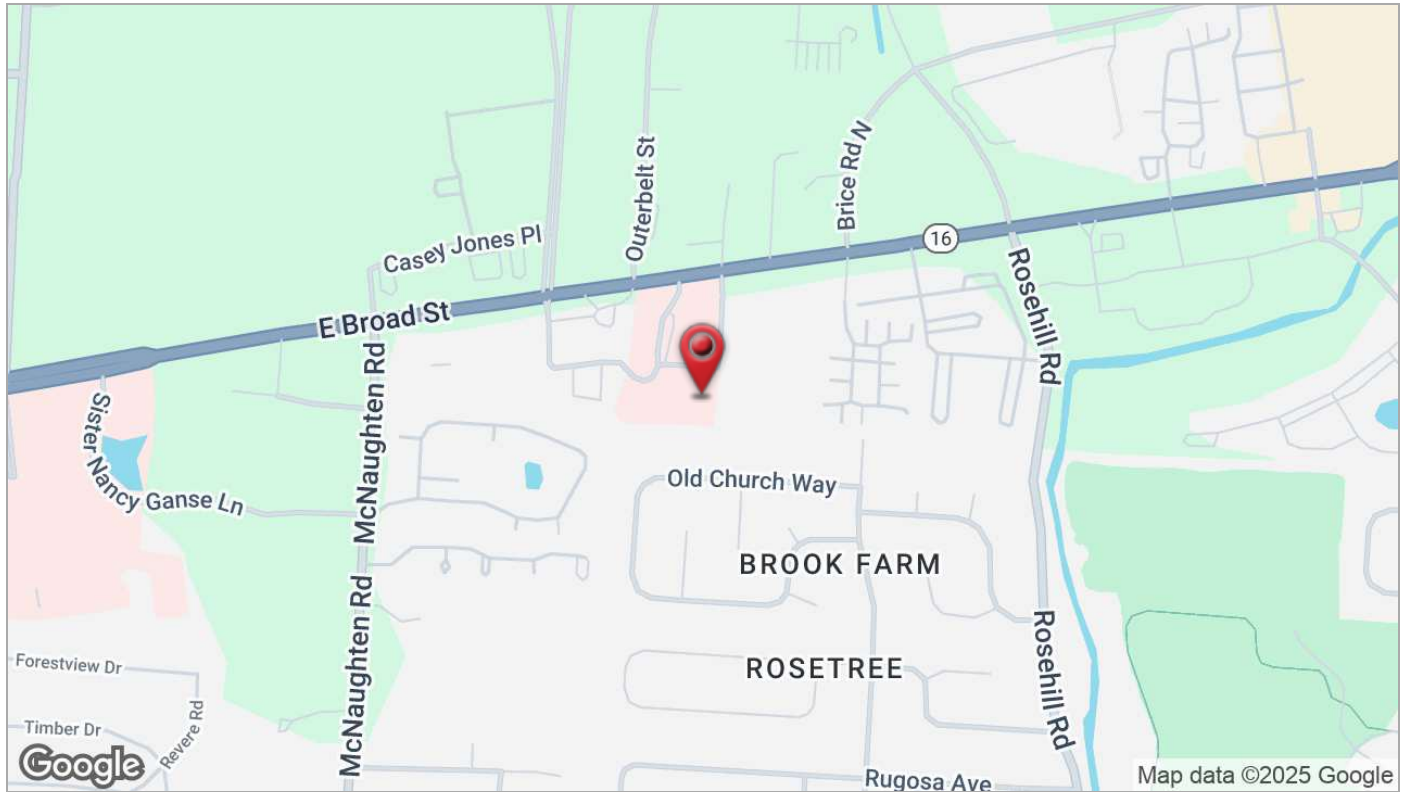
614 629 5240 • pmerkle@ohioequities.com

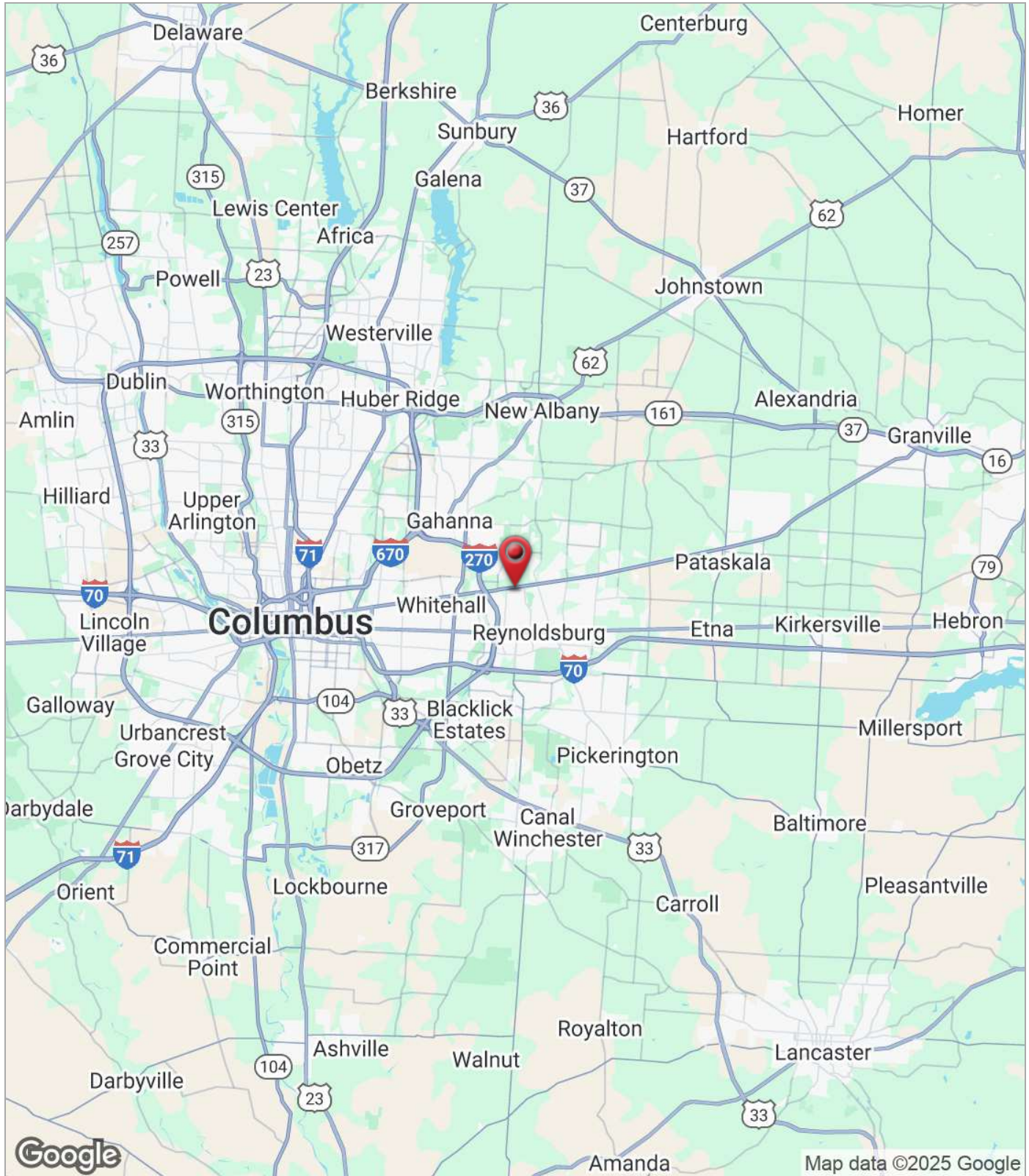


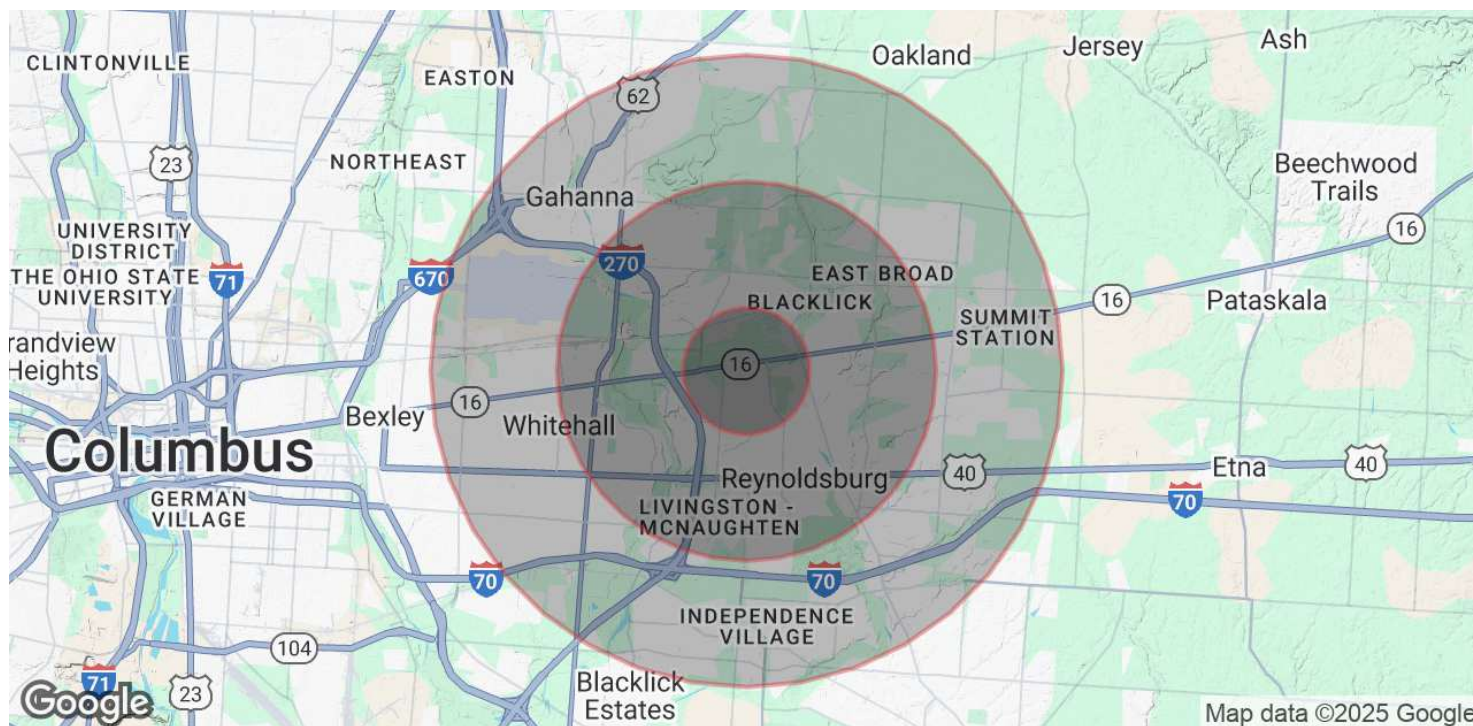












POPULATION

	1 MILE	3 MILES	5 MILES
Total Population	9,626	93,410	230,397
Average Age	41	39	38
Average Age (Male)	39	37	37
Average Age (Female)	42	40	39

HOUSEHOLDS & INCOME

	1 MILE	3 MILES	5 MILES
Total Households	3,975	37,296	89,927
# of Persons per HH	2.4	2.5	2.6
Average HH Income	\$98,092	\$86,708	\$91,588
Average House Value	\$276,668	\$270,595	\$272,424

Demographics data derived from AlphaMap